

7/8" French Curtain Rod 84"- 120"

Safety Information



CAUTION: Before installing brackets, always check there are no hidden wires or pipes.

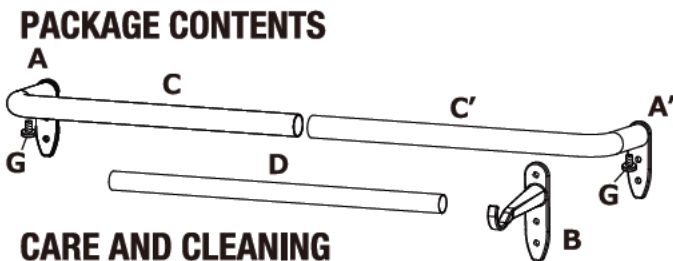


WARNING: Product failure due to using incorrect fixings is responsibility of the installer.

Pre-Installation

NOTICE: The finials shown are for illustration purposes only. It may not represent the style of finial purchased. For larger width windows, two people may be required for easier installation.

PACKAGE CONTENTS



Part	Description	Quantity
A	Large side bracket	2
B	Center bracket	1
C	Large curve rod	2
D	Center straight rod	1

Part	Description	Quantity
E	Screw-in anchors	9
F	Screws	9
G	Bracket secure screws	2

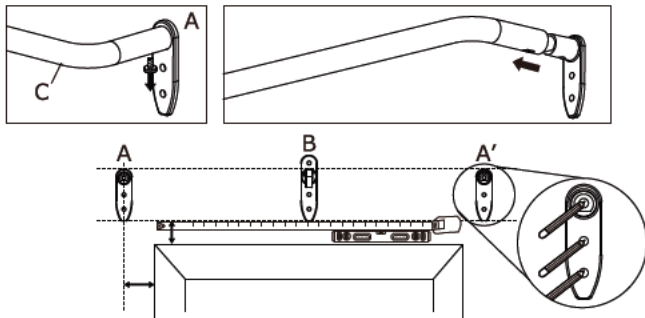
CARE AND CLEANING

To remove dust, use a vacuum cleaner with a brush attachment end or gently rub the rod using a water-dampened cloth with a mild detergent only.

INSTALLATION

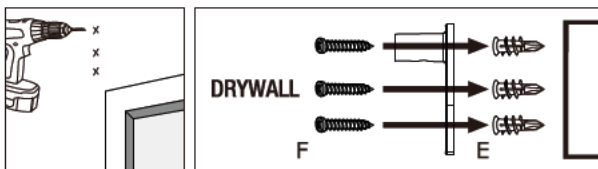
1 Before bracket installation

Unfasten screws on both curve rods (C) to release from side-brackets (A). Place side brackets (A) against wall at desired locations and mark screw holes, and center bracket (B) against wall to confirm desired locations. Use Level and Tape Measure for alignment. Note: Ensure the bracket screw hole on the protrusion is facing downward.



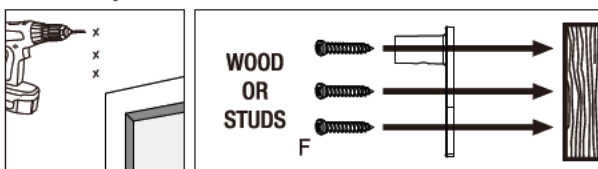
2A Mounting to drywall or paneling

Pre-drill two pilot holes per bracket base using a 1/4 in. bit. Drill horizontally without forcing the drill or enlarging the hole. To install bracket bases, screw anchors (E) into the pilot holes and then attach the bracket bases to the wall using the screws (F).



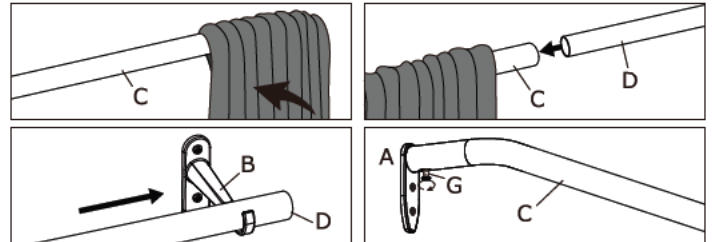
2B Mounting directly to wood or studs

Pre-drill two pilot holes per bracket base using a 3/32 in. bit. Drill horizontally without forcing the drill or enlarging the hole. To install bracket bases, fasten the screws (F) into the pilot holes.

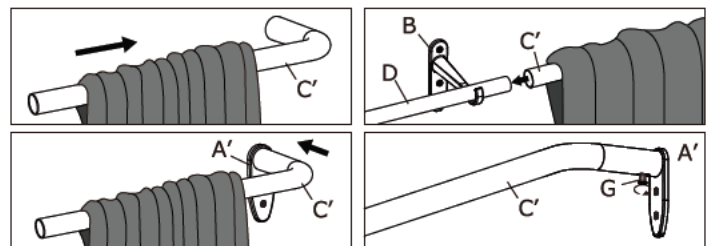


3 Curtain Rod Assembly

Feed one drapery panel onto large curve rod (C), insert extra straight rod (D) into large curve rod (C), and slide it through the center bracket (B). Install large curve rod (C) onto large side-bracket (A) on the LEFT, and secure with screw (G).



Feed second drapery panel onto large curve rod (C'), and then insert large curve rod (C') into center straight rod (D). Install large curve rod (C') into large side-bracket (A') on the RIGHT and secure with screw (G).

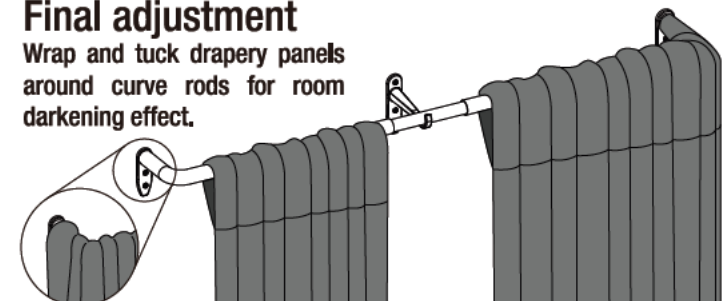


Tighten the bracket secure screws (G) at the base of the right bracket. Ensure the overlaps between inner and outer rods are at least 3 inches for stability.



4 Final adjustment

Wrap and tuck drapery panels around curve rods for room darkening effect.



Retain this manual for future use.