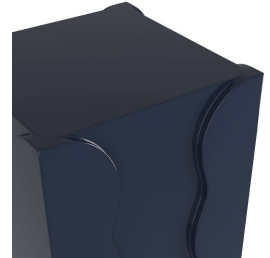
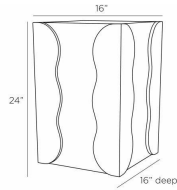


ARTERIO RS

ZITA ACCENT TABLE



FAS03

H: 24 IN, W: 16 IN, D: 16 IN,

Navy

The bold colors and playful geometric shapes of the 1980s find a contemporary revival in our luxe lacquered design. Each sleek side is enhanced with a "squiggle"-edged layer for visual interest. Finished in navy lacquer, it is padded at the bottom for durability.

APPEARANCE

Material	Fiberglass
Material Type	Lacquer
Finish	Navy
Top Coat/Sealant	No

DIMENSIONS

Foot Print	W: 16 IN, D: 16 IN
Diagonal Dimension	28.5 IN

SHIPPING

Product Weight	34.2 lbs
Gross Weight 1	39.68 lbs
Shipping Box 1	H: 27 IN, L: 20 IN, W: 20 IN

ADDITIONAL INFO

Swatch Number	NLSW
Leg Or Foot Application	Felt Pads

CONTRACT

Contract Suitable	Yes
-------------------	-----