

MINNEAPOLIS TOUCHSCREEN Z- WAVE DEADBOLT

ELECTRONIC DEADBOLT WITH BUILT-IN Z WAVE SMART TECHNOLOGY



SPEI

STYLE

BACKSET SIZE	Adjustable
FEATURES MASTERCODE	Yes
INTERIOR LOCKING TYPE	Turn Piece
BATTERY TYPE REQUIRED	4 AA, included
# OF CODES	30.0
# OF BUTTONS	12.0

MINNEAPOLIS TOUCHSCREEN Z- WAVE DEADBOLT

ELECTRONIC DEADBOLT WITH BUILT-IN Z WAVE SMART TECHNOLOGY



Model Number:
8225.102.ZW

SEE BELOW FOR ADDITIONAL FUNCTIONS

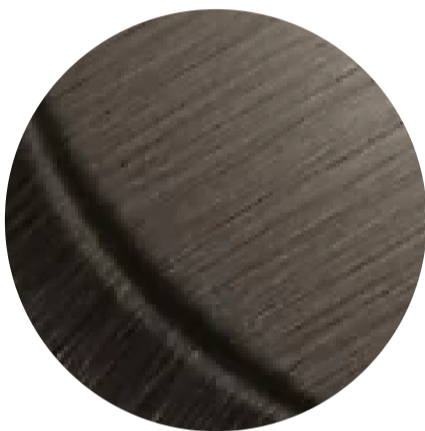
Key Features

- ⊕ A living finish that starts its long life with a Matte Black appearance blooms with time and handling to reveal subtle bronze highlights that suggest they have been centuries in the making.

FINISHES OPTIONS



Lifetime (PVD) Satin Nickel - 056



Lifetime (PVD) Graphite Nickel - 076



Lifetime (PVD) Polished Nickel - 055



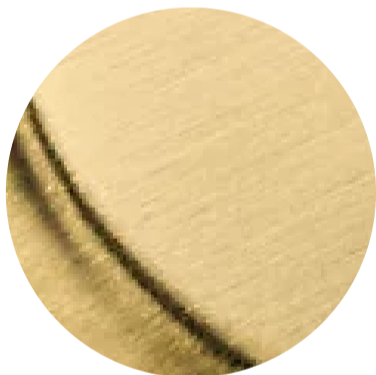
Polished Chrome - 260



Distressed Oil Rubbed Bronze - 402



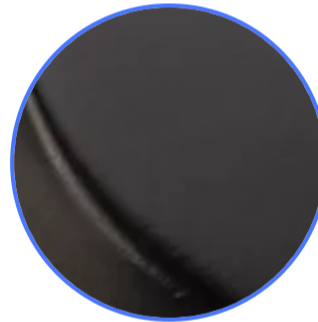
Lifetime (PVD) Polished Brass - 003



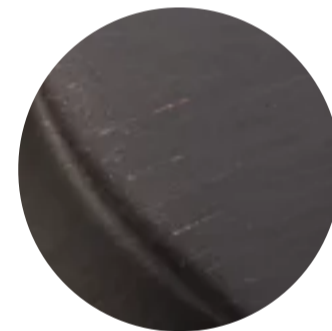
Lifetime (PVD) Satin Brass - 044



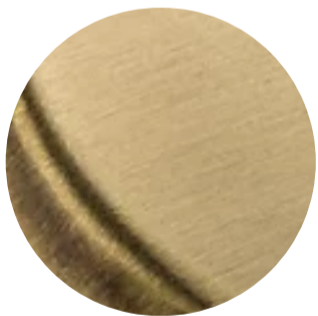
Satin Black - 190



Oil Rubbed Bronze - 102



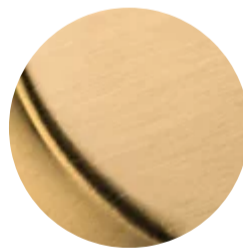
Venetian Bronze - 112, 11P



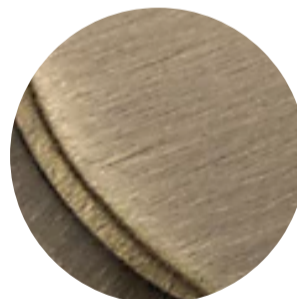
Satin Brass & Brown - 060



Non-lacquered Brass - 031



Vintage Brass - 033



Satin Brass & Black - 050

SPECIFICATIONS

all measurements in inches

STYLE	Contemporary
BACKSET SIZE	Adjustable
FEATURES MASTERCODE	Yes
INTERIOR LOCKING TYPE	Turn Piece
BATTERY TYPE REQUIRED	4 AA, included
# OF CODES	30.0
# OF BUTTONS	12.0