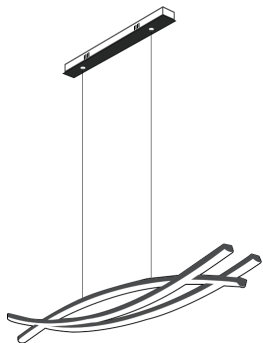


风琴折说明书 正背面打印 尺寸：宽240mm*高90mm

正面

Modern LED
Pendant Lights



With high quality after-sales service team, if you encounter any difficulties, please contact us!
After-sales Email: your-light@outlook.com

Modern LED Pendant Lights User Guide

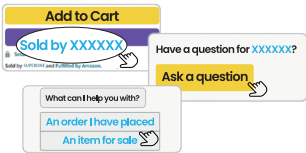
- Caution:**
1. It is recommended to ask for professional installation and purchase the required size.
 2. Due to different light and screen resolutions, the color will have a little deviation.
 3. This product has mounting parts, pointed screws, please keep away from children under 12 years old, and safe installation
 4. Please pay attention to the size before purchasing. Due to manual measurement, there may be a 1-2 cm error.
 5. The product produces high lumens at its brightest, please do not look directly at the chandelier for a long time.
 6. When installing, please make sure that there is no exposed part of the wire after linking, which may lead to leakage and burn out, and make sure that the mounting screws are completely tightened.
 7. After receiving the goods unpacked, please check the first time whether the appearance of the lamp body is intact, and whether the accessories are complete, if there is any problem, please contact the after-sales service for replacement in a timely manner.

01

Parameter

Diameter:	39"/47"/59" (100cm/120cm/150cm)
Material:	Aluminum, Silicone and LED Chips
Voltage:	AC100-240V
Light fixture from:	Pendant Lights
Color:	Dimmable with Remote Control
Light Source:	LED strips
Lamp Body Color:	White Silicone, Black Body
Installation Type:	Hard-wired
3 Color:	Warm Light 3000k; Neutral Light 4500k; Cool White 6000k

How to contact sellers on Amazon?



02

How do I contact seller support?

This is our seller support email:
your-light@outlook.com

We have a professional after-sales team to provide you with product use and installation guidance, usually within 24 hours for you to deal with the problem.

封面

底面

背面

Set up

- Turn On
- Turn Off
- Pair Code
- Brightness+
- Brightness-
- Color Temperature+
- Color Temperature-
- Color Temperature Change
- White/Neutral White/Warm White
- Switch between 50% and 100% brightness
- Auxiliary light on/off
- Night Light Mode
- Timing 1 Minute

SETUP: Turn on the power, press the "SETUP" twice within 5 seconds, then the light flashes twice to indicate that the code is matched. Otherwise, turn off the power and repeat this step until the light flashes twice.

03



NOT compatible with any dimmer switches
Only accept a regular on and off wall switch
With remote control (without batteries)

If using regular wall switch, the light will cycle through in the following sequence:
At first: White Light(6000K)
Next: Warm White Light(3000K)
At last: Neutral White Light (4500K)

NOTE:

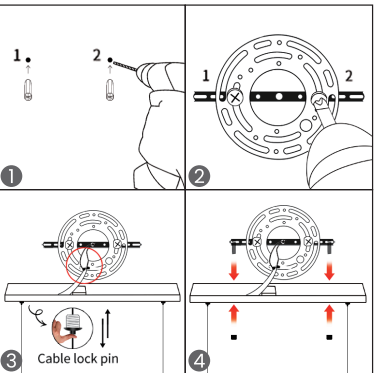
- 1. Memory Function:**
Choose the color temperature and brightness, light up for 10 seconds or more (to activate the memory function). When turn on the light next time, it will keep your previous setting.
- 2. Traditional switches** can only change the color of the light, but not the brightness of the light.
- 3. Not support a smart switch and dimmer switch,** the brightness and color of the light will not produce any change.

Product List

- 1. Pendant Light*1
- 2. Accessory Packs*1
- 3. Instruction Manuals*1
- 4. Remote control*1

04

How to Install the Pendant Light:



Note: Please make sure the power is off before installation.

If you don't understand the installation steps, please contact us, we have a professional after-sales team to provide you with one-on-one installation guidance.

After-sales Email: your-light@outlook.com

05

Step 1: Drill two holes and knock the green expansion tubes.

Step 2: Fix the bracket to the wall.

Step 3: Connect the wires.

Step 4: Fix the lamp to the bracket.

Step 5: Press the adjustment place can freely adjust the hanging line to be short. Hold down the pin and push it towards the chassis to shorten the cable, and stretch it outwards to extend the cable.
(Height Adjustable from 11" to 59")

Wiring Diagram:

- Live Wire
- Neutral Wire
- Ground Wire



Warning:

1. Do not use the power supply beyond the specified range (AC85-265V, 50-60Hz)
2. Please make sure you have cut off the electricity supply before installation.
3. Tighten cable pins securely to avoid loosening or leakage.

06