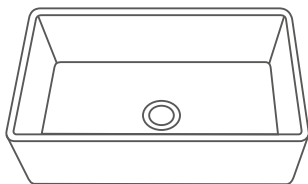


Sarlai®

INSTALLATION INSTRUCTIONS



White Farmhouse Sink

Installation Instructions Kitchen Sinks

General Recommendations:

Please read the installation and maintenance instructions carefully before installation. Inspect the sink for visible damage before installation. Check all locally applicable plumbing and building codes.

These instructions apply only to countertop installations of composite or solid surfaces; for countertop applications of stone, marble, granite or cutting boards, an experienced countertop fabricator should be consulted for custom installation.

The SARLAI Farmhouse Sink Collection is individually handcrafted and SARLAI recommends using only experienced professional plumbers. For countertop custom cutting and actual sink installation, on-site installation is also recommended. The acceptable deviation is approximately ½ inches. For cutting and precise application and trimming of any adhesive is critical to achieve a superior fit and finish appearance. Please take extra care in this regard.

SARLAI Farmhouse series sinks require custom cabinets. Consult your cabinet dealer in advance.

SARLAI is not responsible for damage or personal injury to the countertops, sinks, or faucets during the installation process. Warranty is void if installation instructions are not followed .

Tools and Materials needed:

Tape Measure	Denatured Alcohol	Wood Braces
Pencil (NOT ink)	Ear Protection	Framing Square
Silicone Adhesive Sealant	Eye Protection	Shims
Rags	Hacksaw/jigsaw	

Make sure you use the proper tools and always wear personal protective equipment to avoid injury.

Installation Options:

SARLAI Farmhouse Series sinks are available with multiple installation options to suit your design.

Under mount Installation (Recommended)

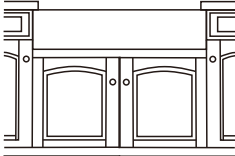


Figure 1

Flush mount Installation

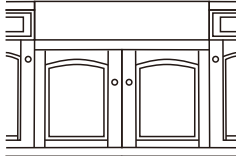


Figure 2

Above counter Installation

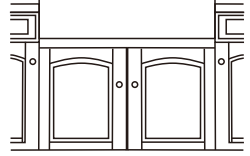


Figure 3

Note: All installation types require space for faucet installation. Make sure there is adequate clearance for any faucet and backsplash behind the sink, as well as the range of motion of the faucet's spouts and handle.

Typical under mount 1/4" display is recommended.

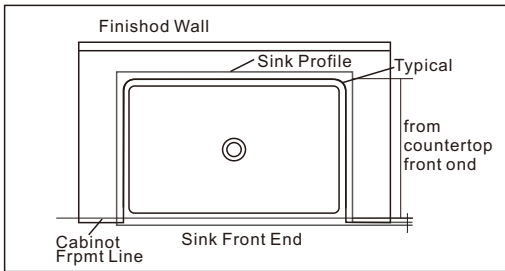


Figure 4

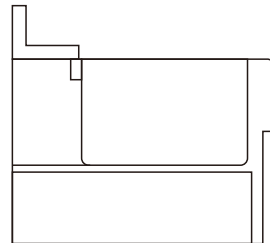


Figure 5

Typical flush mount and above counter installation.

Above counter installation may expose sink sides to be raised above the countertop.

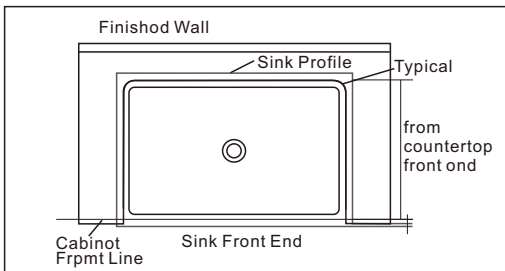


Figure 6

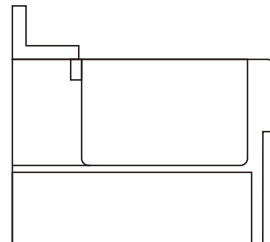


Figure 7

Contact your retailer if any product is damaged or missing parts before installation. Never install a damaged sink as it can void your warranty.

1. Prepare the sink base cabinet

The farmhouse sink requires a custom sink base cabinet with a front cutout to accommodate a 10" deep sink. Build structural supports on the inside frame of the sink base cabinet. The structural support must support the weight of the sink and any accessories, such as garbage disposal. When placing the sink on the cabinet support, make sure the top of the sink is flush with the bottom of the countertop. Clean the water supply and drain lines or garbage disposal, if necessary.

2. Make template and cutout

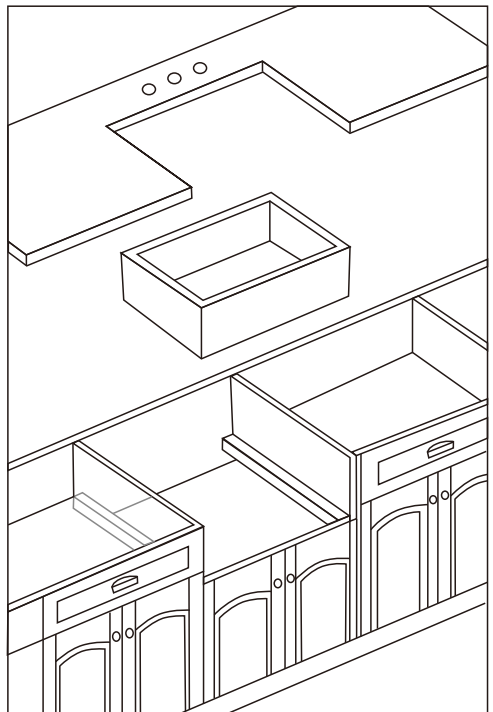
Depending on the installation option, make a proper cutout of the countertop. SARLAI recommends a 1/4 reveal on 3 sides when installed undermount style. For a flush mount or above counter installation, cut countertop along with outside of sink profile. SARLAI Farmhouse sinks are designed to be installed 3/4 extended out beyond the front end of the countertop. Cut countertop accordingly. No template is provided due to the custom design. Use the actual sink size as the template guide for each installation. After centering the sink and enough space allowing for faucets and backsplashes, use a pencil to outline the sinks as your guide for the cutout.

3. Set the sink

Set the sink on top of the cabinet or into the cabinet front cutout. Apply sealant if necessary as a gasket between the sink and cabinet. Use a level to make sure the sink is even and will drain correctly.

4. Install the countertop

Place the sink in the support structure. Apply a bead of silicone sealant between the rim of the sink and the countertop to create a watertight seal. Hook up the drain underneath according to the drain instructions and the sink will be ready for use. Use plumbers putty to make a water tight seal between the drain and the sink.



CARE AND MAINTENANCE

ALWAYS

- Clean the sink on a regular basis with mild cleaners and a soft cloth. Dry your sink with a soft cloth to prevent water spotting.
- Rub lightly with a soft cloth in the direction of grain lines on a regular basis for additional preventative cleaning. Scrape off heavier gunk with a plastic spatula or scrub it off with a soft scrubber.
- Keep the sink free of any standing water as this can cause a buildup of mineral deposit, which can affect the appearance of your sink.
- Always rinse the sink after using any cleaning agent and wipe dry. Clean any mineral deposits built up over time with a mild solution of vinegar and water followed by a thorough flushing with water.

NEVER

- Never use a steel wool or scoring pad as it damages the sink surface and causes discoloration.
- Never let household cleaners or bleach stay in your sink for a long time, as this may damage the surface of your sink.
- Never leave rubber mats, sponges, or cleaning pads in the sink for a long time as this may ruin the finish of your sink.
- Never use any drain cleaning products containing sulfuric acid or hydrochloric acid as this can corrode the sink. Solvent cleaners also contain acids that can damage sink surfaces.
- Never use the inside of the sink as a cutting surface.

SARLAI guarantees the repair or replacement of products with defective workmanship or quality problems.

The end-user or a contractor procured from SARLAI or an authorized SARLAI distributor, for the life of the original owner or end-user During the warranty period, repair or replacement or replacement (equivalent product) will be reported to the authorized distributor or SARLAI within one year from the date of initial purchase, as determined by SARLAI. This warranty applies to the original owner or end-user and is not transferable to subsequent owners.

Limitations

This warranty does not apply to incorrect operating procedures, damage, or deterioration due to improper installation, carelessness, abuse, misuse, improper use, improper maintenance, or alteration of the product, as well as chemical or natural corrosion, accidents, fire, floods, acts of God, or any other casualties. Avoid the use of abrasive cleaners, steel wool, and harsh chemicals as these can scratch, damage, or dull the product finish. The owner/end-user of the product covered by this warranty is solely responsible for its proper installation and any applicable plumbing or electrical wiring.

SARLAI neither installs nor supervises the installation, nor does it include the hiring of contractors. SARLAI shall not be liable for any direct or indirect breach of contract, breakage, or damage resulting therefrom.

SARLAI is a leading manufacturer of luxury kitchen and bath products. We firmly believe that only the best design and the highest quality materials can satisfy your lifestyle. Therefore, our team develops new styles of products by combining the needs of the times and the market. Using new technology and quality materials, we design unique and practical faucets, kitchen sinks, and other accessories. Reducing installation time, saving water, increasing durability and reliability, SARLAI products are also the best choice for you.

CONTACT US:

E-mail: sarlaihome@yahoo.com

URL: www.sarlai.com

TEL: 323-825-3111

