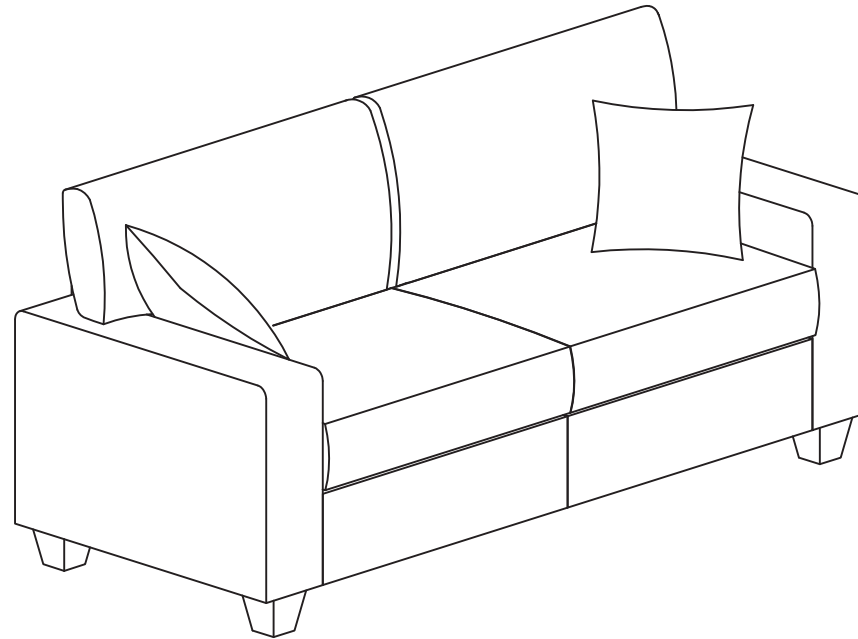


**61 inch No Tools  
Fabric Sofa  
Assembly Instructions**



THIS INSTRUCTION BOOKLET CONTAINS IMPORTANT SAFETY INFORMATION.  
PLEASE READ AND KEEP FOR FUTURE REFERENCE.

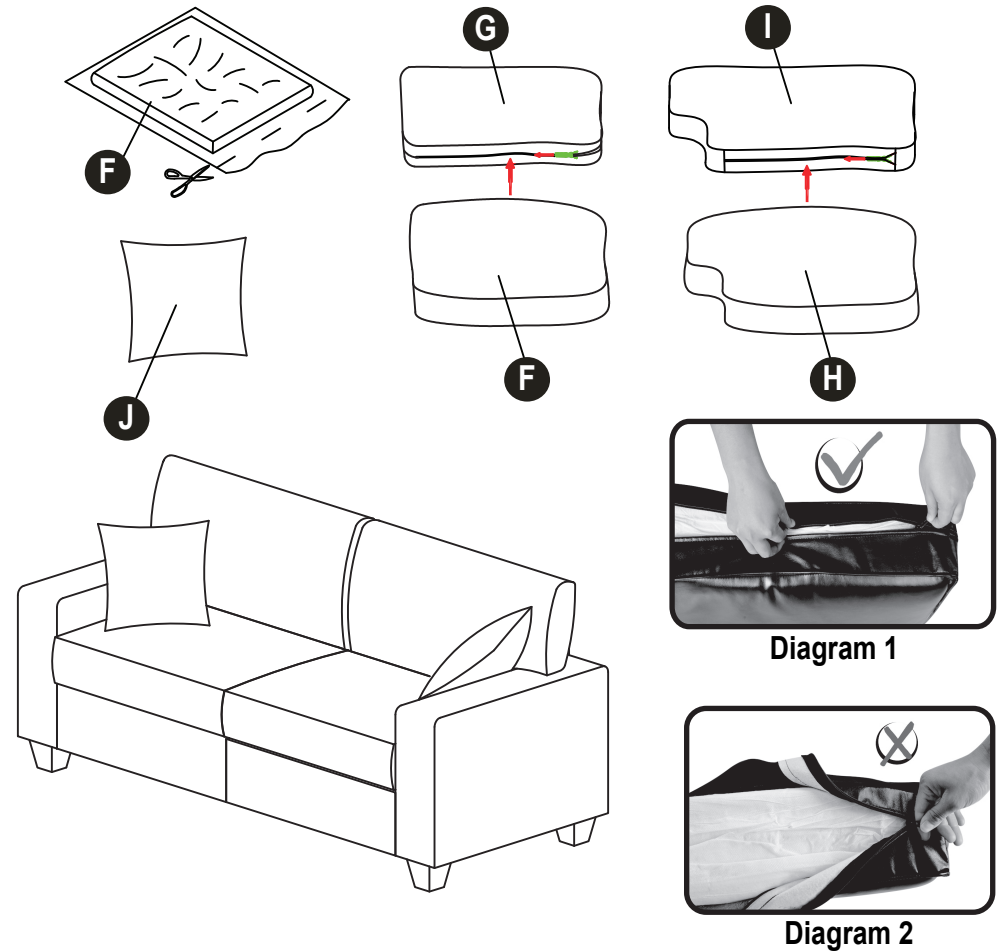


Thank you for selecting one of seating solutions.

We are here to help if you have any questions, comments, or are in need of warranty replacement parts.

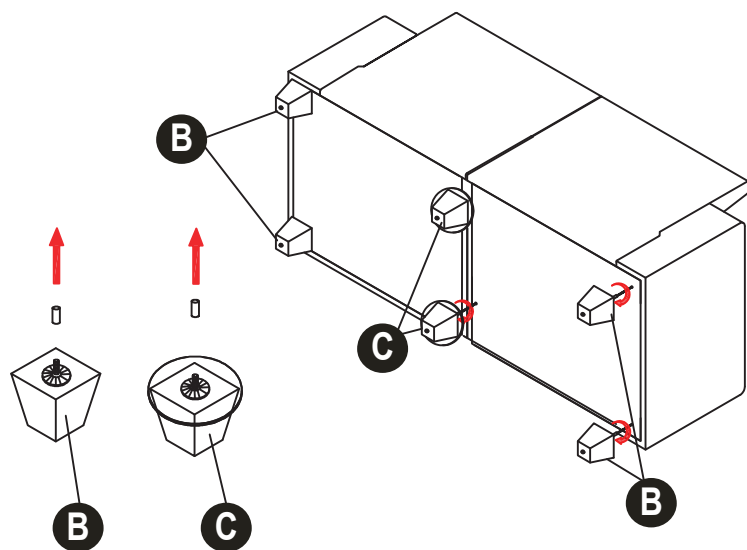
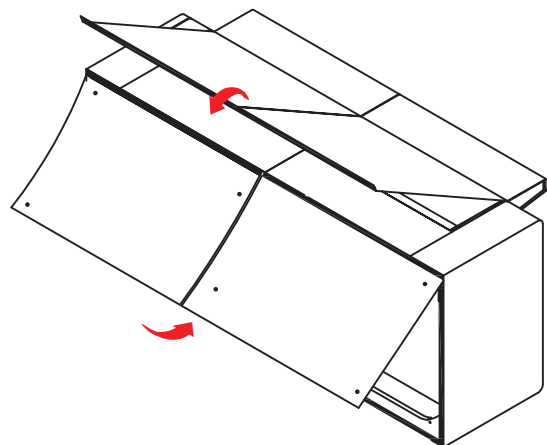
**Step 6 --**

Open the vacuum packed Seat Cushions (F) by carefully cutting the bags with a pair of scissors. Fluff all cushions and pillows to allow them to expand. Insert the Back Cushions (H) into the appropriate Back Covers (I). Insert the Seat Cushions (F) into the appropriate Seat Covers (G). Remember to keep the top side of the Seat Cushions (F) with the top side of the Seat Covers (G). Lastly, position all cushions and pillows on the sofa.



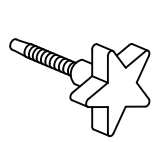
**ATTENTION:** To close the zipper, please follow diagram 1. Failure to follow this could result in damage to the zipper.

**Step 5 --** Secure the bottom and back flaps with hook and loop tape. Remove the plastic caps on the threaded bolts of each leg. Attach the 2 Wood Legs with Washers and Covers (C) to the middle holes of the sofa (Ensure the plastic spacer is in place). Attach the Wood Legs (B) to the corners of the sofa.

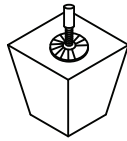


#### NOTES:

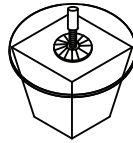
- Please read the instruction sheets completely before assembly.
- Remove all parts from carton and ensure all parts are included prior to assembly.
- Assemble the sofa on a protected surface to avoid scratching the components of sofa.
- Be careful not to cross-thread screws.
- Do not use power tools.
- Two people are recommended for assembly!
- Seat and back cushions may take 24-48 hours to fully expand, which will allow wrinkles caused by packing to fade.



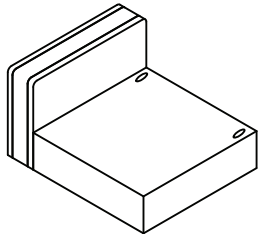
**A** Thumb Bolts (5)



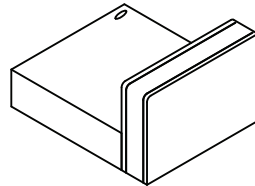
**B** Wood Legs with Washers (4)



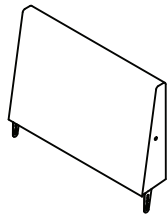
**C** Wood Legs with Washers and Covers (2)



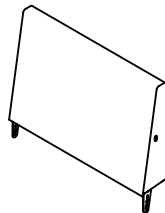
**D1** Arm and Seat Frame with "L" Label (1)



**D2** Arm and Seat Frame with "R" Label (1)

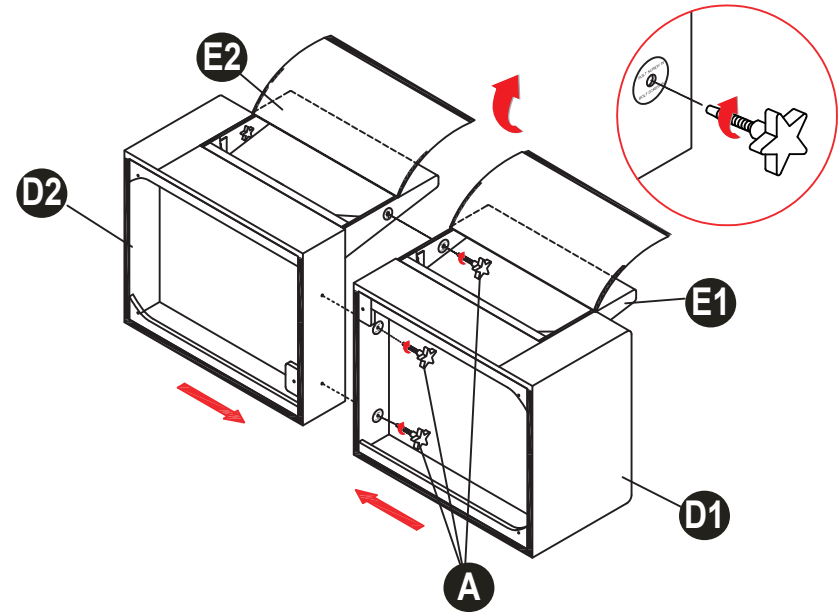


**E1** Back Frame with "L" Label (1)

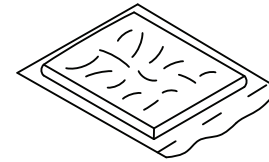
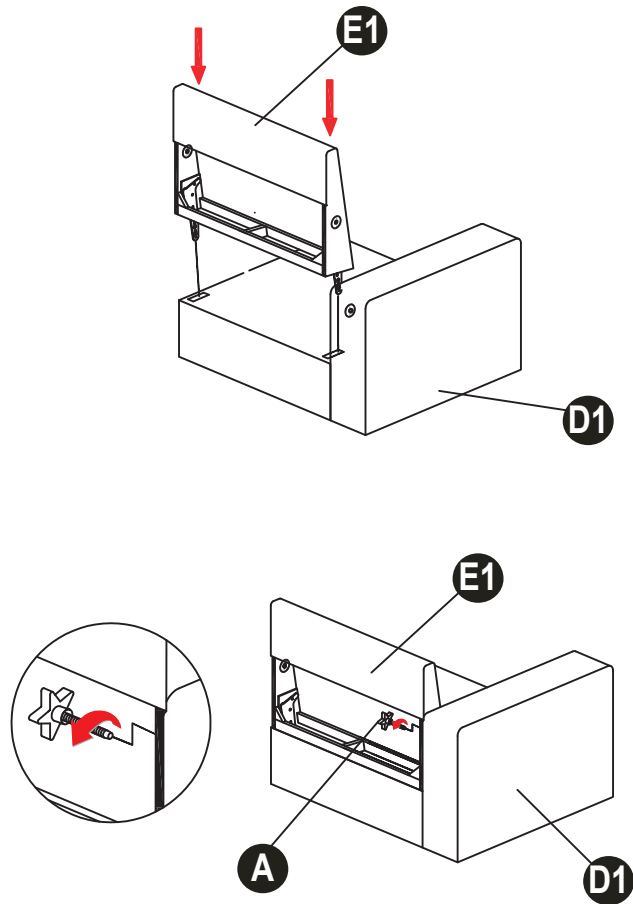


**E2** Back Frame with "R" Label (1)

**Step 4 --** Move the two assembled parts together. Align the holes of Seat Frames (D) and Back Frames (E) to the other side and secure with three Thumb Bolts (A). Ensure all Thumb Bolts (A) are completely tightened.



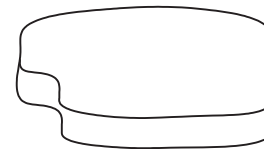
**Step 3 --** Turn over the Arm and Seat Frame with “L” Label (D1) and slide the Back Frame with “L” Label (E1) into the seat frame until fully engaged. Align the holes of the Back Frame (E1) to the Arm Frame (D1) and secure with one Thumb Bolt (A).



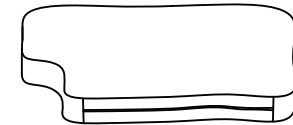
**F** Seat Cushions (Left & Right) (2)



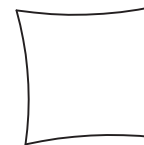
**G** Seat Covers (Left & Right) (2)



**H** Back Cushions (Left & Right) (2)



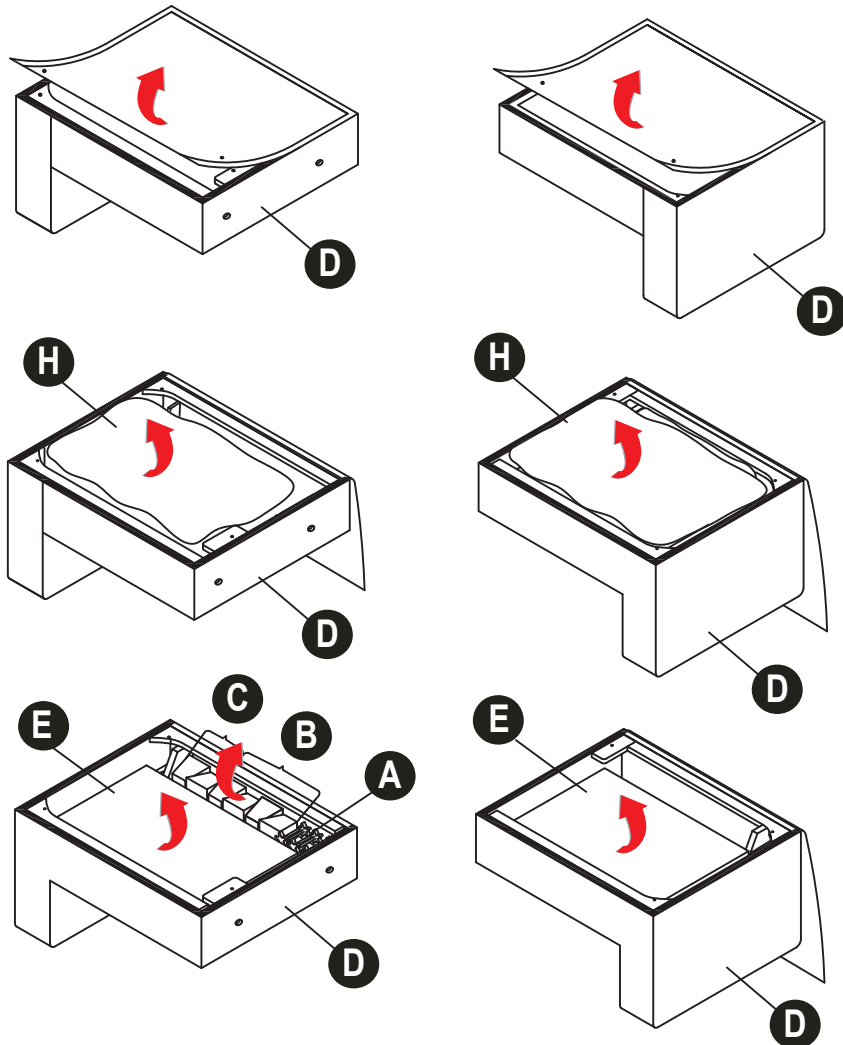
**I** Back Covers (Left & Right) (2)



**J** Throw Pillows (2)



**Step 1 --** Remove all parts from the carton and place them on a protected surface or carpet. Place the Arm and Seat Frames (D) upside down and open the bottom flap. Take the Back Cushions (H), Wood Legs (B), Wood Legs with Washer and Covers (C), Back Frames (E) and Thumb Bolts (A) out of the seat box.



**Step 2 --** Turn over the Arm and Seat Frame with "R" Label (D2) and slide the Back Frame with "R" Label (E2) into the seat frame until fully engaged. Align the holes of the Back Frame (E2) to the Arm Frame (D2) and secure with one Thumb Bolt (A).

