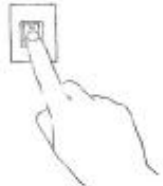


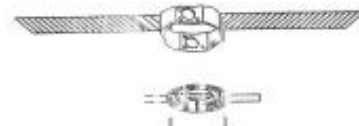
# Installation Instruction

1



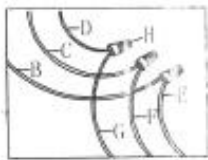
turn off the power.

2



install mounting bracket

3

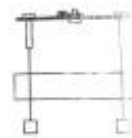


Wire connection

B-Black wire(L) from junction box  
 C-White wire(N) from junction box  
 D-Green wire or bare copper from junction box  
 B-Black wire(L) from fixture  
 F-White wire(N) from fixture  
 D-Green wire or bare copper from fixture  
 H-wire connector x 3

Connect wires

4



rise and install canopy to Mounting bracket

5

MU57:24"

