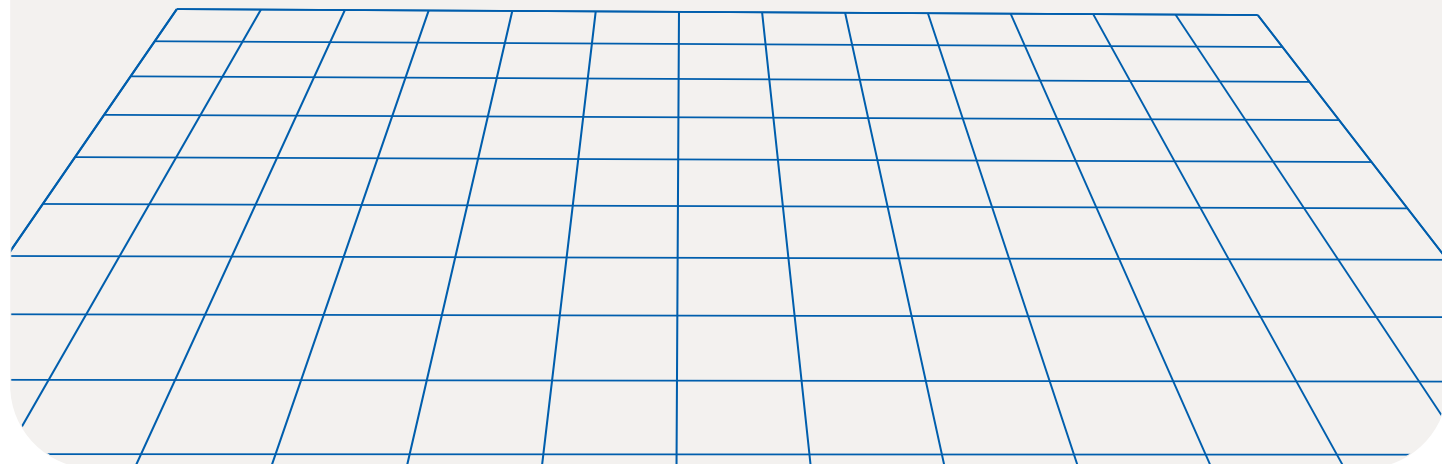


Work like new

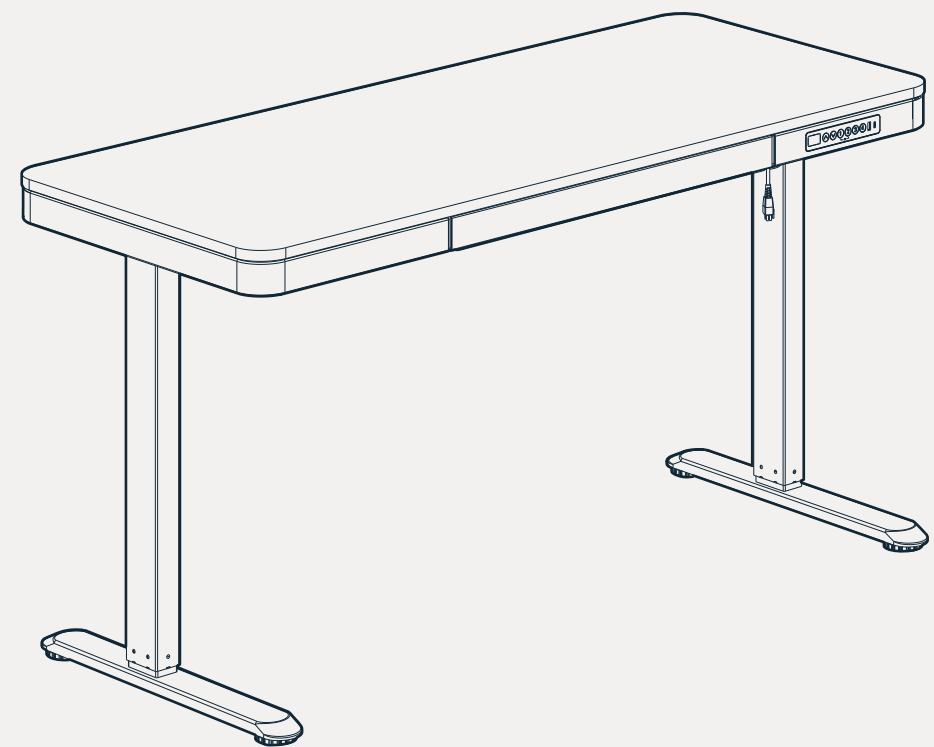


+1 (855) 585-5618



FlexiSpot

Item No. Q3-55-V2
User Manual



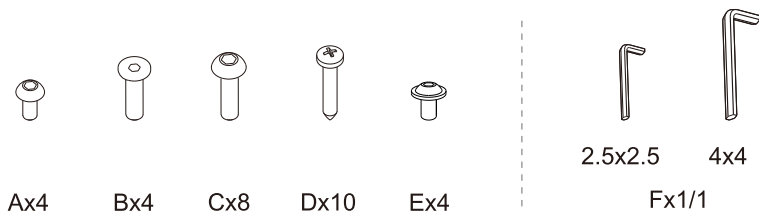
The tabletop and frame will be shipped separately, please wait it patiently.

Specifications

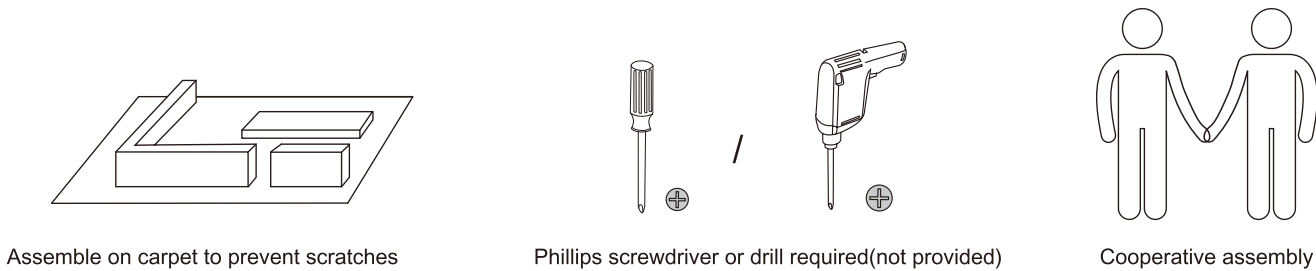
Lifting Column Design	2 stage
Max. Weight Capacity	99 lbs
Max. Speed	0.8"/s
Min. Height	29"
Max. Height	46.5"
Desktop Size	55.3" x 27.7"
Drawer Size	23.6" x 11.2" x 2"

Accessory Package

The following illustrations are for reference only, and may differ in appearance to the actual product. If you are missing any accessories or experience any installation issues, please contact customer service.

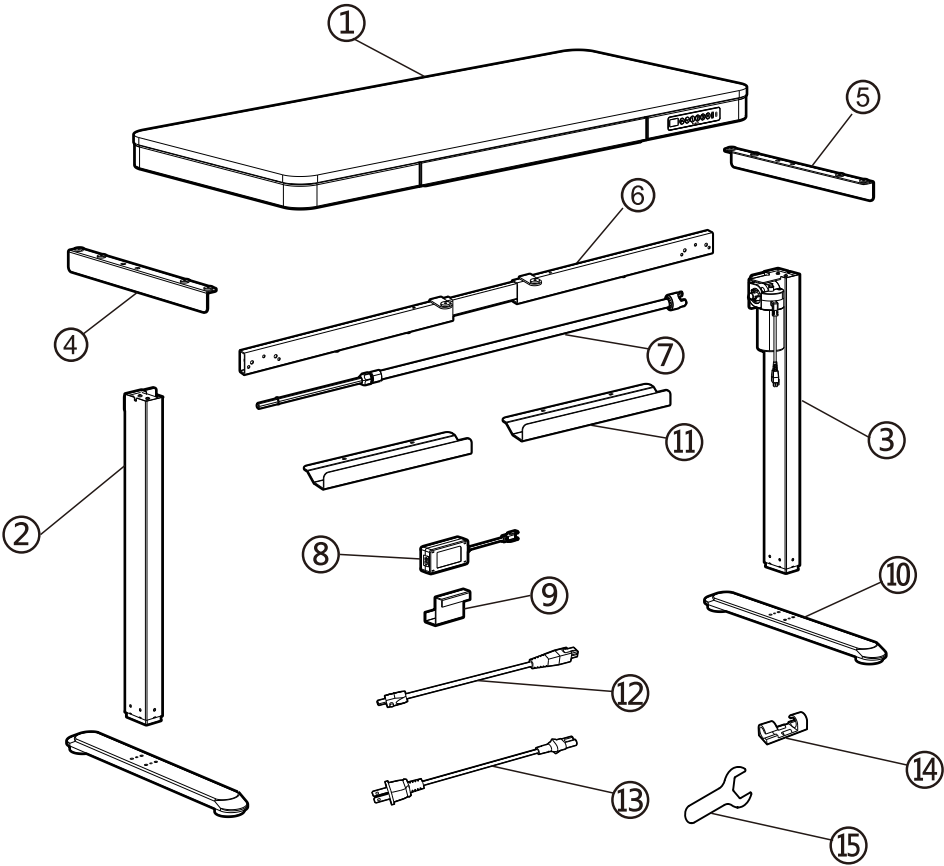


Assembly Notes



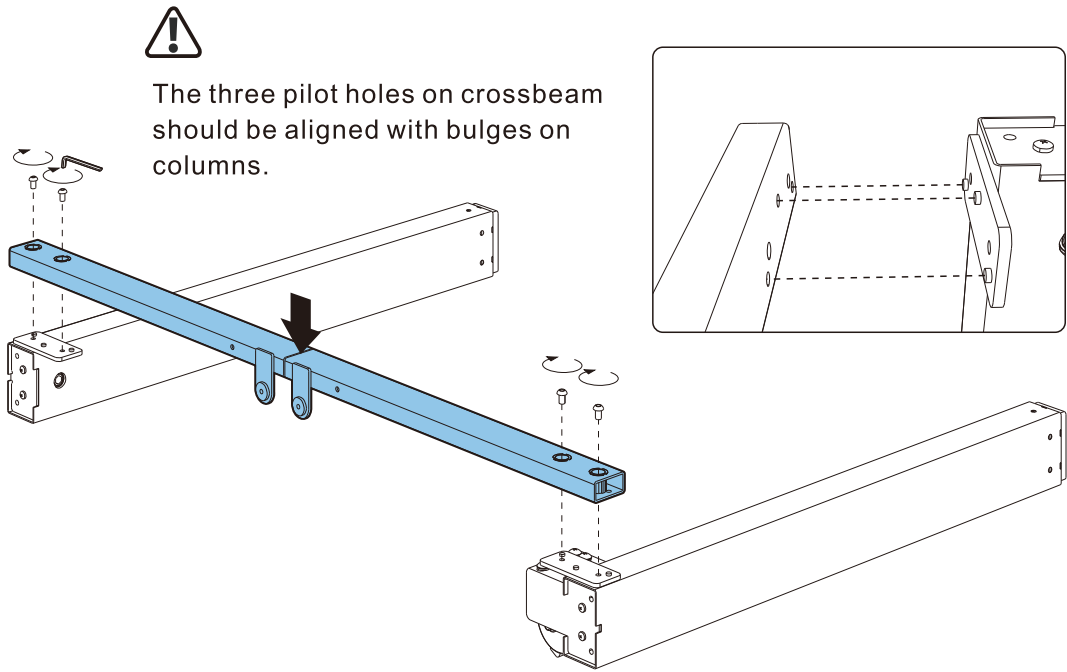
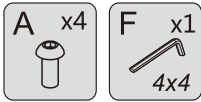
Parts Included

①	Tabletop x1	
②	Left lifting column x1	
③	Right lifting column x1	
④	Left support bracket x1	
⑤	Right support bracket x1	
⑥	Crossbeam x1	
⑦	Transmission rod x1	
⑧	Adaptor x1	
⑨	Adaptor holder x1	
⑩	Desk feet x2	
⑪	Baffle x2	
⑫	Patch cord x1	
⑬	Power plug x1	
⑭	Cable tie x4	
⑮	Wrench x1	

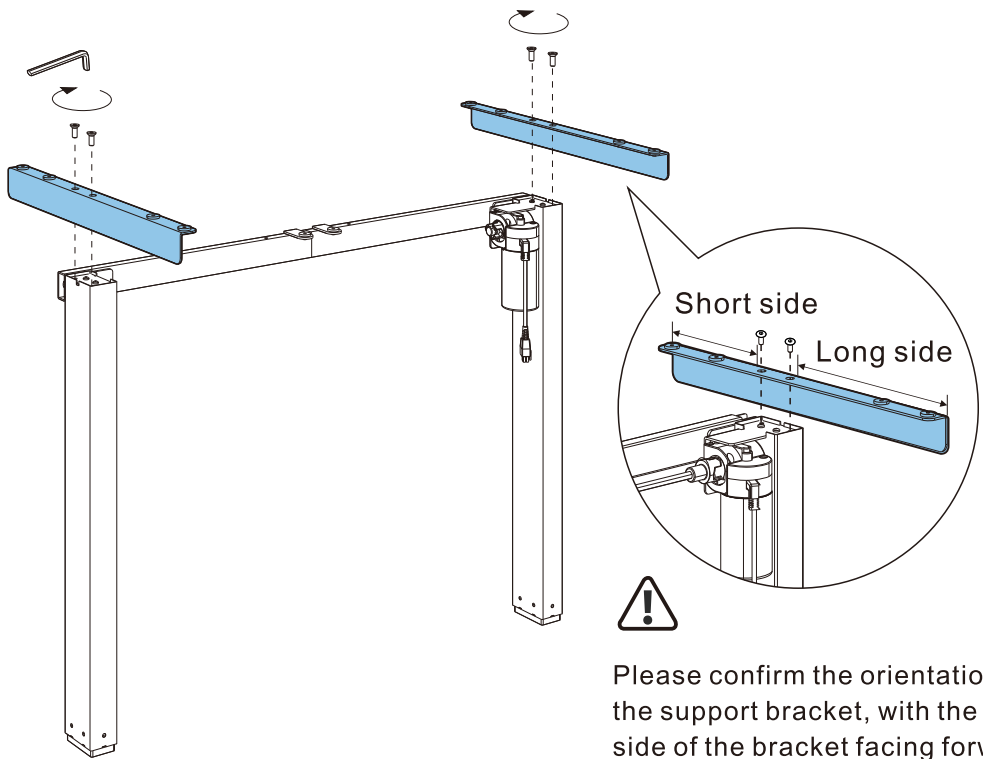
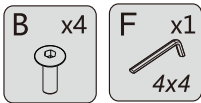


Assembly Steps

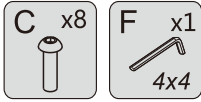
01 Install the crossbeam



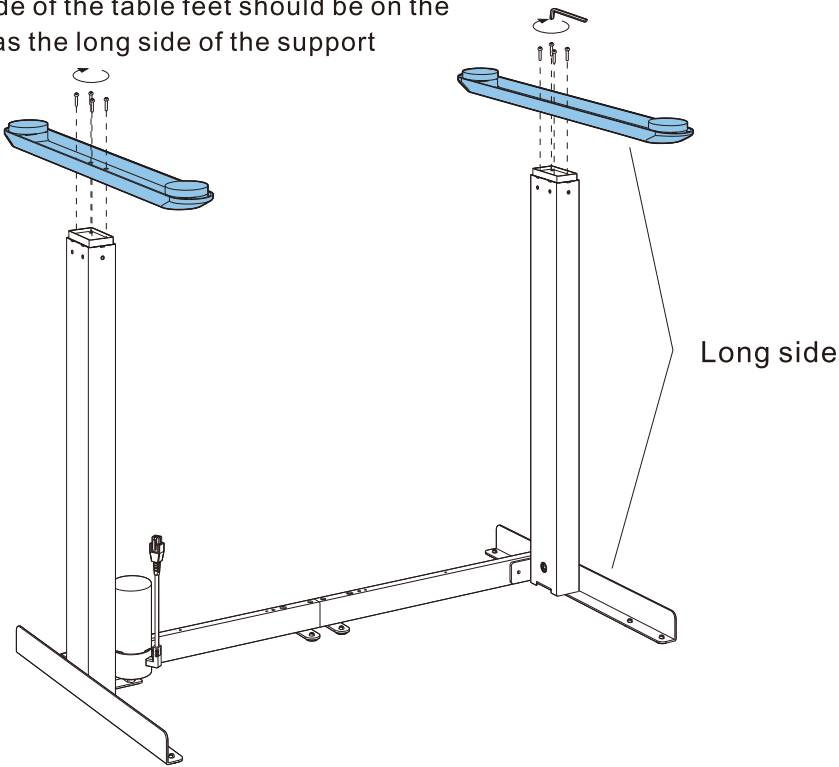
02 Install the support brackets



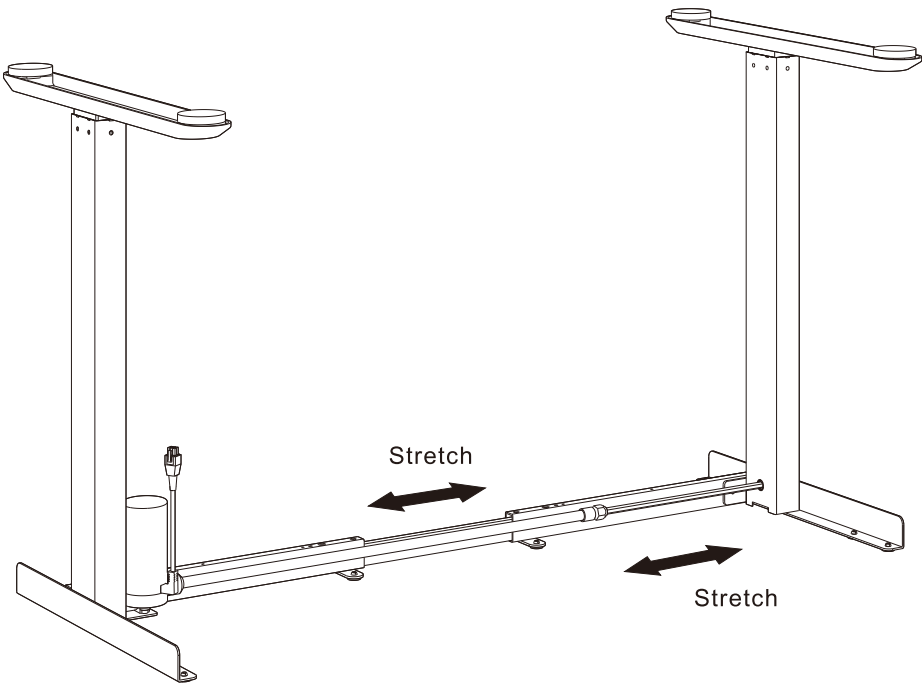
03 Install the desk feet



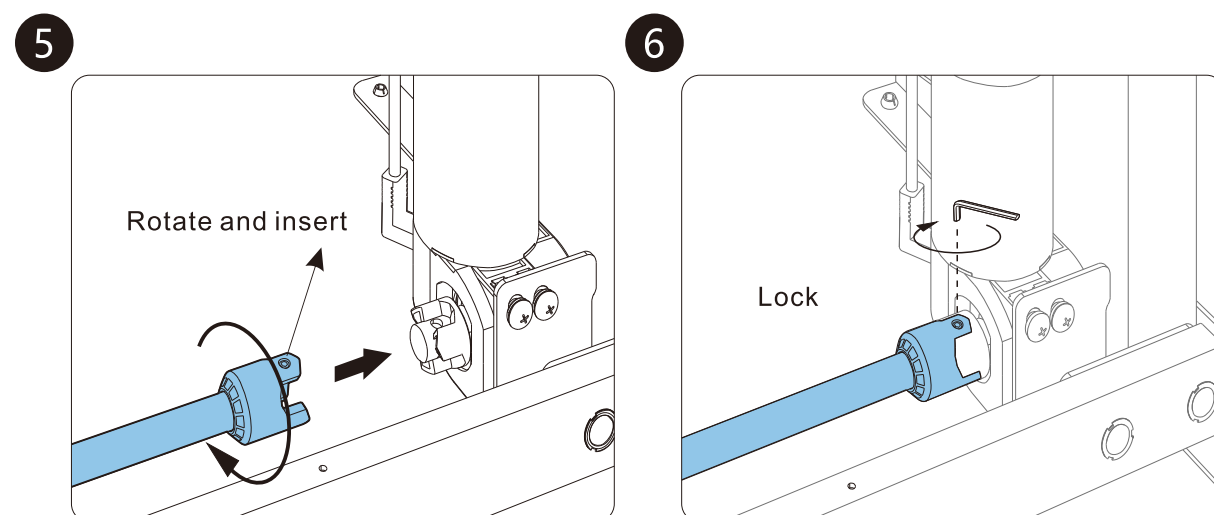
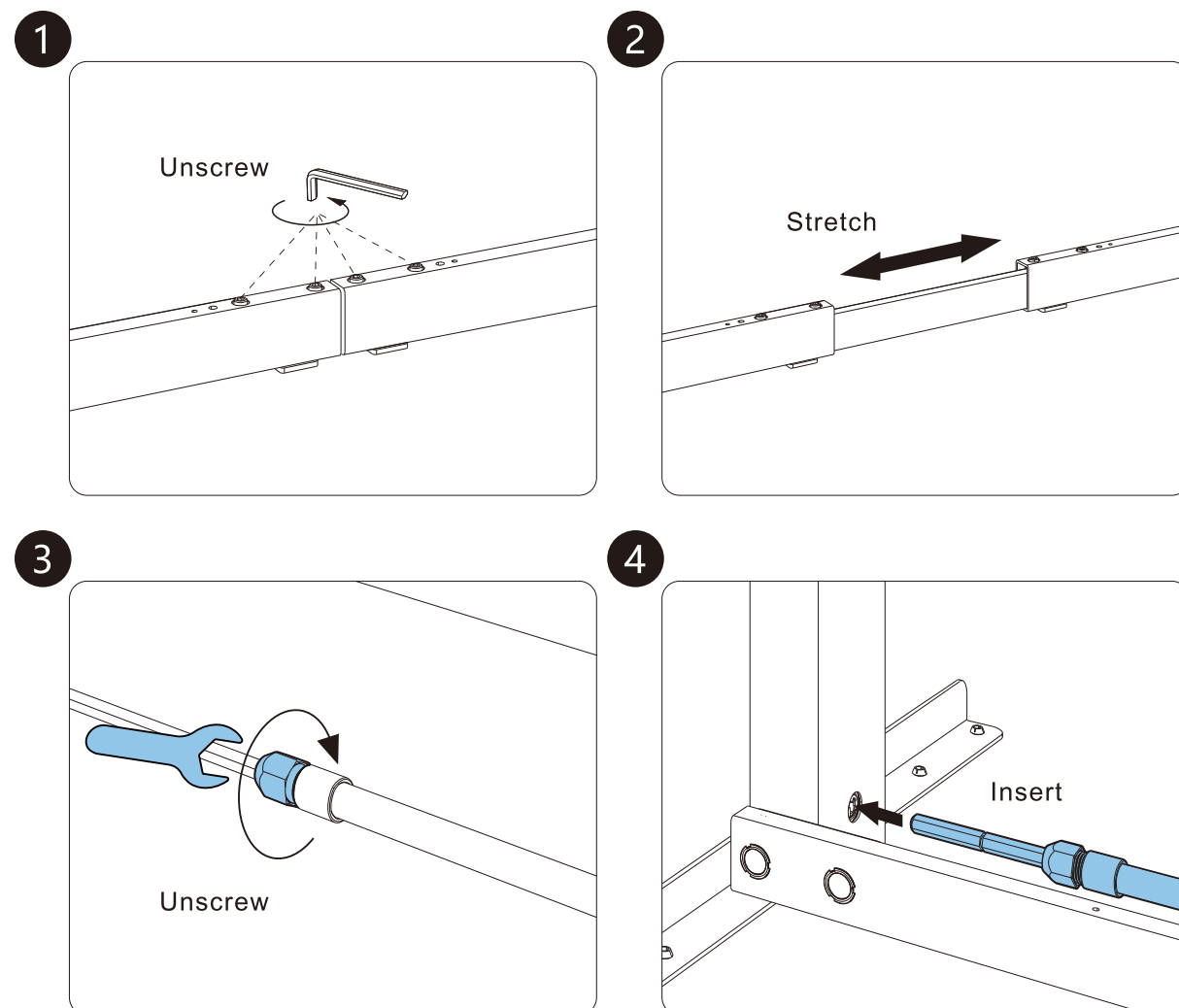
Please confirm the orientation of the table feet. The long side of the table feet should be on the same side as the long side of the support bracket.



04 Install the transmission rod



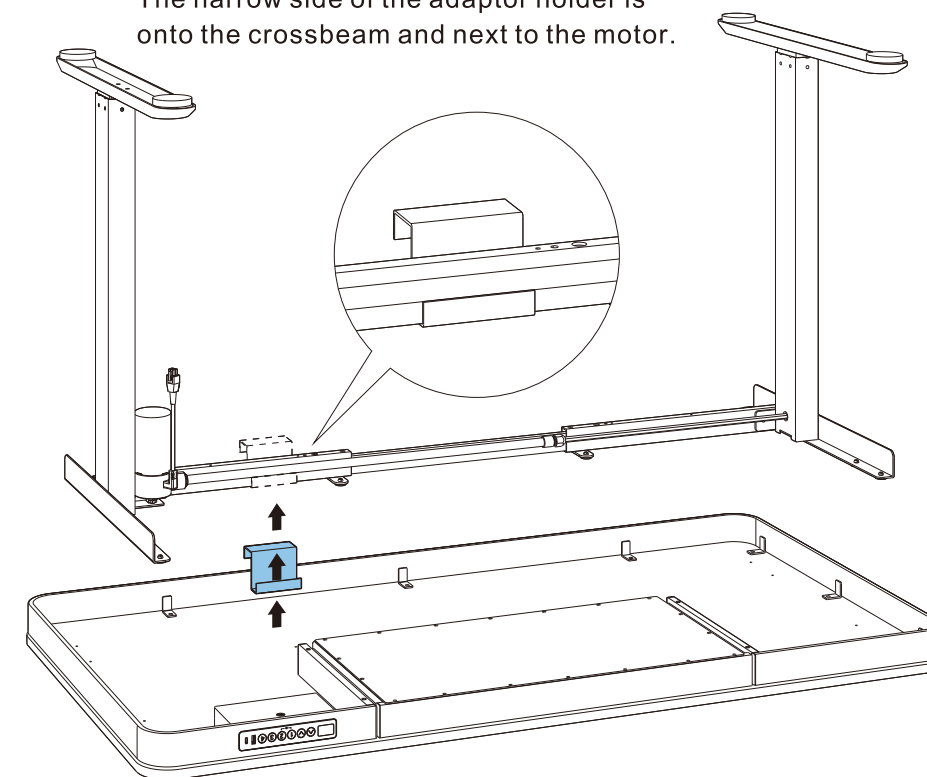
05 Install the adaptor holder



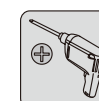
Loose the bolt and rotate the transmission rod if does not fit, but don't rotate over 60°.





The narrow side of the adaptor holder is onto the crossbeam and next to the motor.



06 Install the tabletop

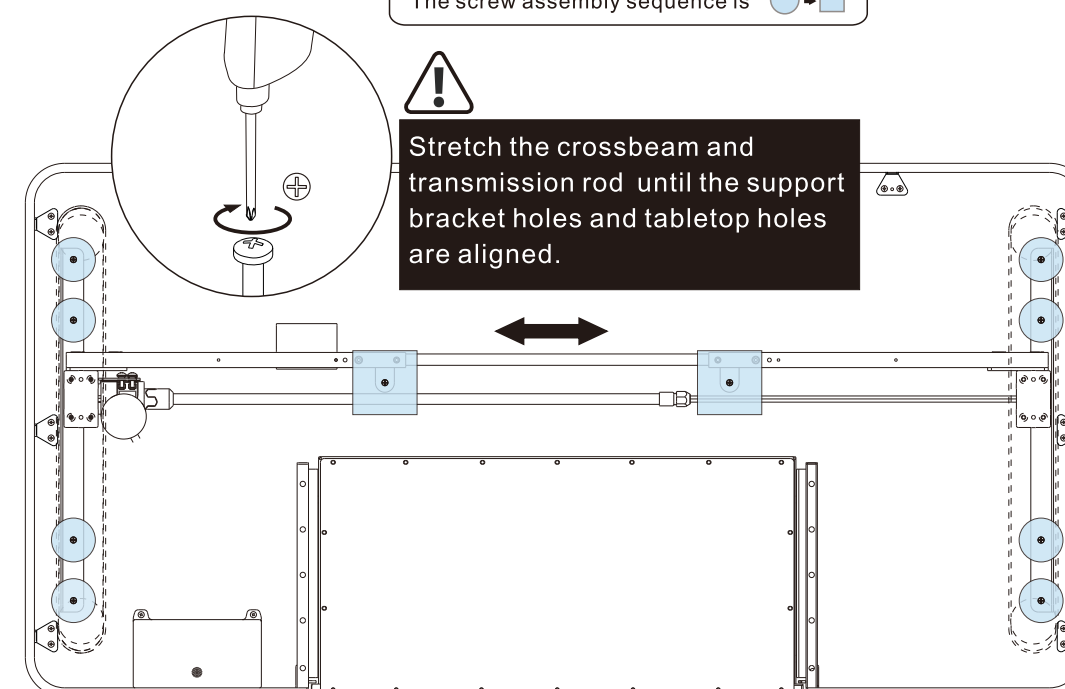


Customer-provided

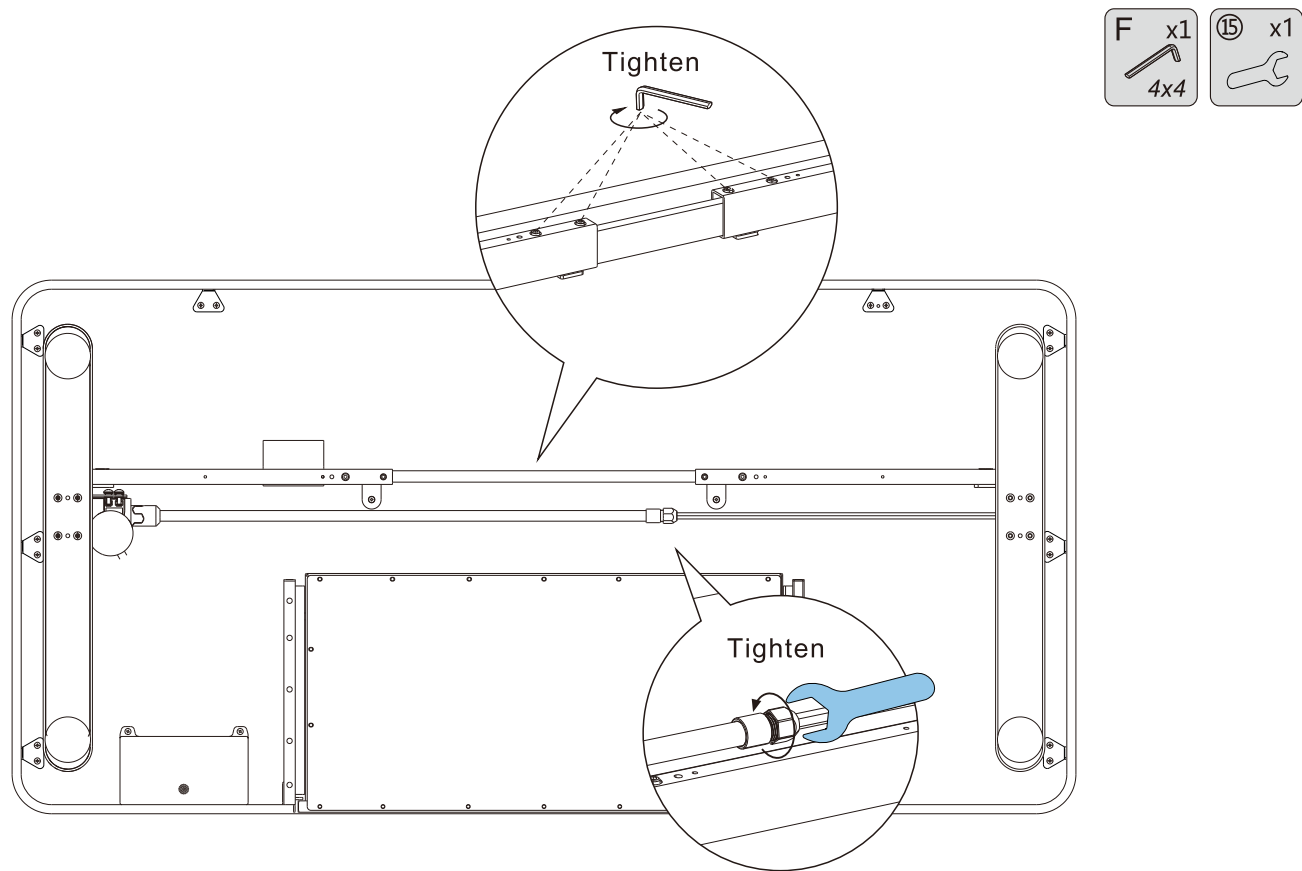
The screw assembly sequence is  



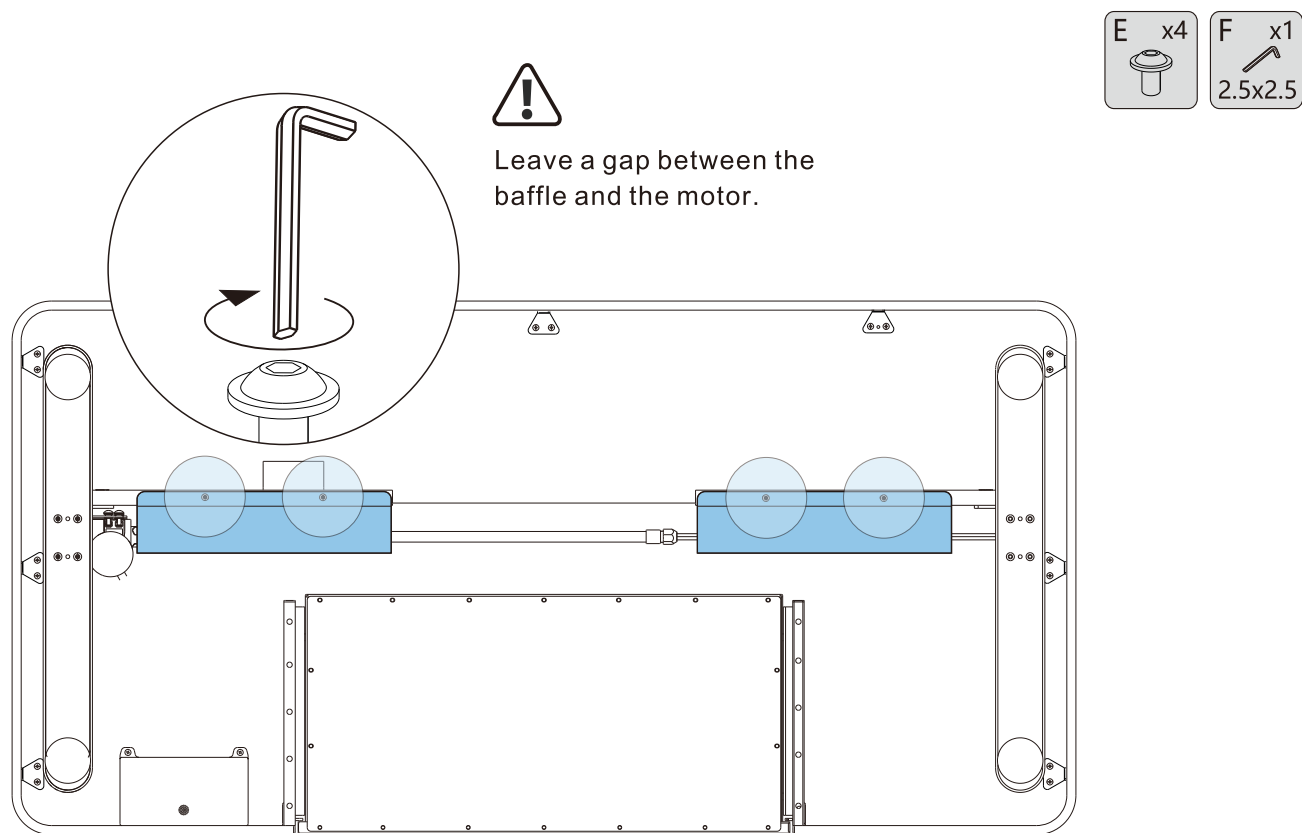
Stretch the crossbeam and transmission rod until the support bracket holes and tabletop holes are aligned.



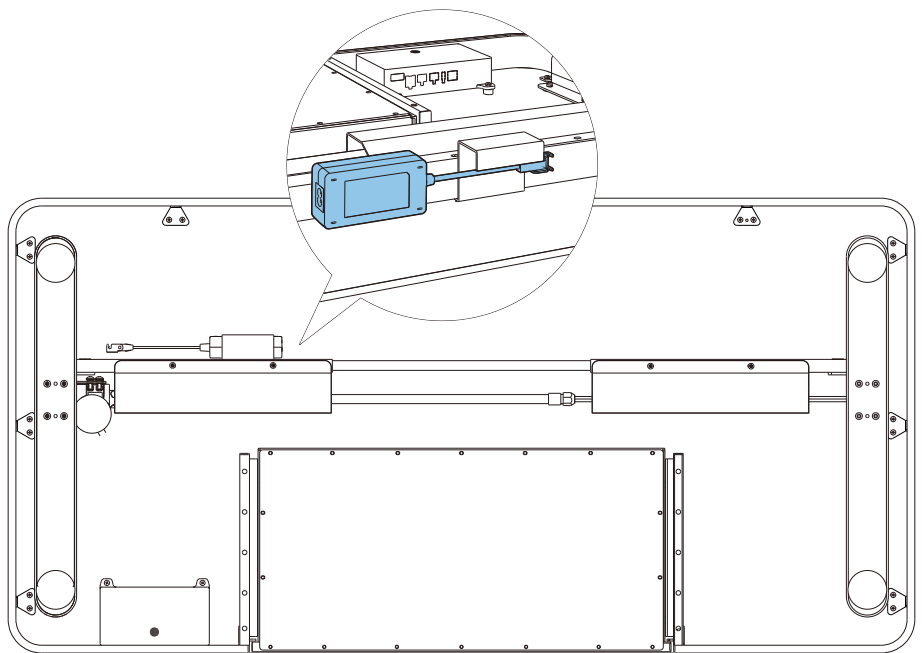
07 Tighten the crossbeam and transmission rod



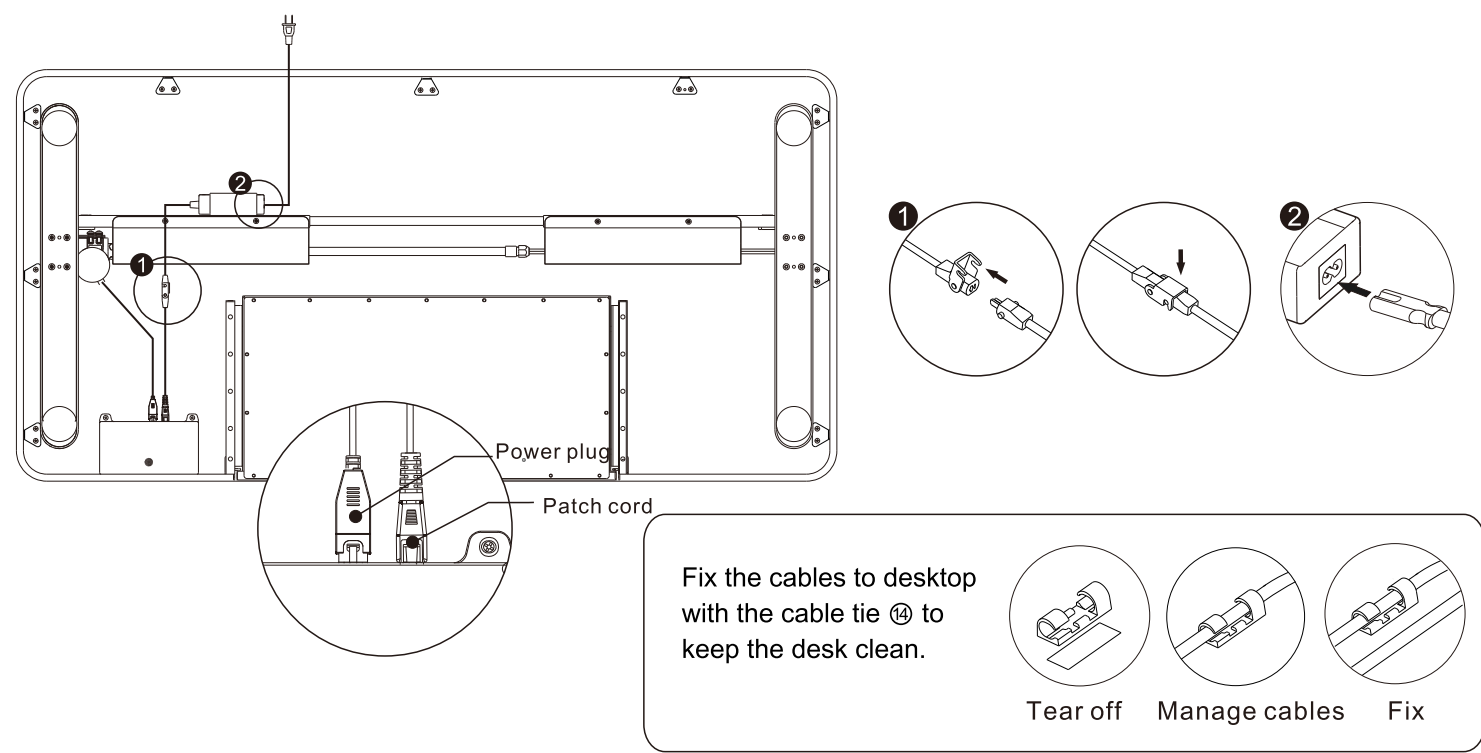
08 Install the baffle



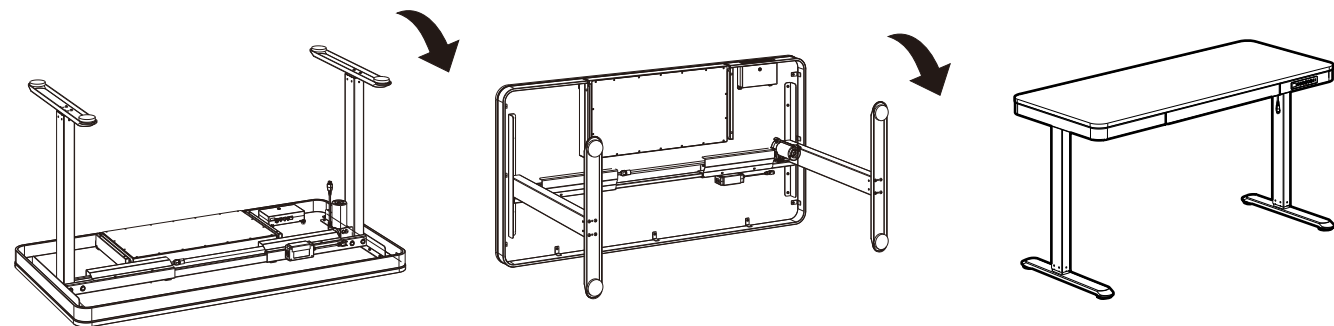
09 Insert the adaptor



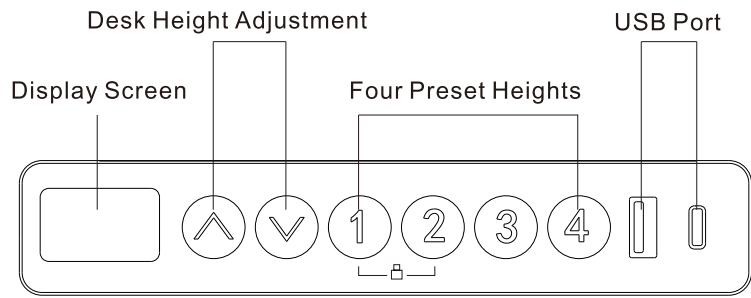
10 Wiring



11 Flip the desk



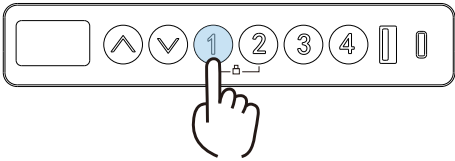
User Instructions



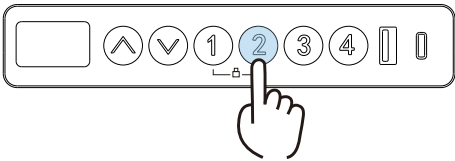
Note:
Please ensure there are no obstructions during the desk's movement and that all cables are of sufficient length to accommodate the desk's vertical movement.

Recommendation:
Preset your most comfortable sitting height as "1" and your most comfortable standing height as "2". The additional preset heights can be freely set to other levels.

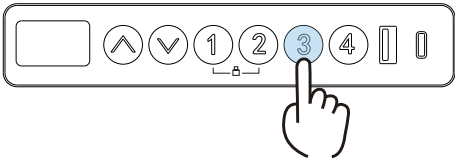
Height Preset Function:



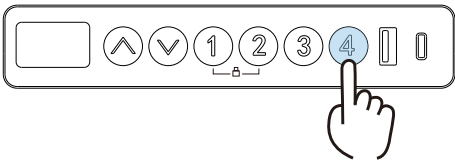
a. Press and hold the "1" button for three seconds to save the current height. The display will show "5-1".



b. Press and hold the "2" button for three seconds to save the current height. The display will show "5-2".



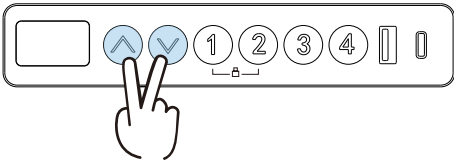
c. Press and hold the "3" button for three seconds to save the current height. The display will show "5-3".



d. Press and hold the "4" button for three seconds to save the current height. The display will show "5-4".

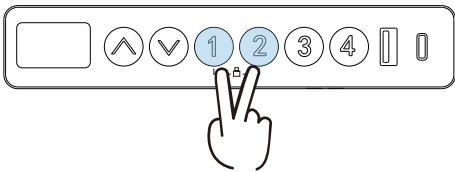
Once the height presets are saved, you can simply press the "1", "2", "3", or "4" button to automatically adjust to the corresponding preset height.

Collision Sensitivity Adjustment - Optional Feature:



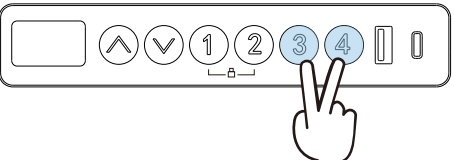
a. Press and hold both the "▲" and "▼" buttons for five seconds to switch the sensitivity level. Upon successful switching, the buzzer will beep once. Each operation switches the sensitivity by one level, with a total of four levels (R-0, R-1, R-2, R-3)
R-0 Disabling the Collision Avoidance Feature
R-1 Low Sensitivity
R-2 Medium Sensitivity
R-3 High Sensitivity

Child lock function:

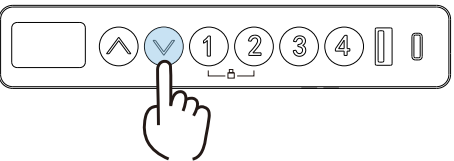


a. Press and hold "1" and "2" for three seconds, display shows "LoC" - Child Lock is ON.
b. Then press and hold "1" and "2" again for three seconds, display shows current height - Child Lock is OFF.

Reset Function :



a. Press and hold the "3" and "4" buttons for three seconds to initiate a "Reset" or "Reset" reset indication.



b. Continue pressing the "▼" button until the height-adjustable desk descends to its lowest position and then rebounds slightly before stopping. This completes the reset process, and the desk can be used normally thereafter.

USB Charging Function:

a. The motor cable features 1 USB and 1 Type-C port. Both USB and Type-C ports can power other electronic devices and support the following charging protocols:
For USB (single port output): 5V 3A/9V 2A/12V 1.5A/20V 1.35A with a maximum of 27W.
For Type-C (single port output): 5V 3A/9V 3A/12V 3A/15V 3A/20V 2.25A with a maximum of 45W.
For dual port output: 7.5W+7.5W. The output will cease while the desk is in motion and will resume once the height adjustment stops.

Troubleshooting

Use the following tips to help detected and eliminate common errors. If the error you experienced is not listed below, please contact your supplier. Please do not attempt to investigating and correcting these types of errors yourself.

Faults	Solution
No response while pressing up/down after connected with apower supply.	Check all cables are connected well.
Overwork (Duty cycle: Max 2min on/18min OFF)	Restart after suspend for 18mins while connecting with power.
Rising in a low speed	Check if the loading weights more than 99 lbs.
Downward sliding	
Frequently Reposition	
USB ports stop supplying power when the desktop is in use	The desk will resume power output after 5 seconds of inactivity.
The motor not move as instructed	Reset it! Press and hold the "3" and "4" keys together for 5 seconds to enter reset mode. The display will show "RST." Then, press and hold the "v" key until the desk reaches its lowest point and rebounds slightly. The display will show "bot," indicating that the reset is complete. OR Contact customer service.
Go down but not go up	
Insufficient ascent and descent height	
Displaying error code	

Attention

- Power supply: AC100 - 240 V, frequency 50/60HZ;
- Working environment: 32° - 104° F;
- Before cleaning, you have to unplug the power supply cable. Clean with a slightly damp cloth to wipe away the surface dust. Keep all electrical components away from liquids. Do not damage the connection line and keep the plug in a safe position.
- Inside the control box, there are electronic components, metal parts, plastic parts, wires and so on. They should be disposed in accordance with the local laws and regulations. They cannot be disposed as household waste.
- Before using the product, please make sure the product has been installed correctly.
- Before starting use of the product, please read the instructions to fully understand all the product's functions and settings.
- Keep children away from electric height-adjustable desks, control units and handsets. Manufacturer is not responsible of any damages that result from children's unpredictable behaviour.
- Slight noise caused by the multi wedge belt or brake system will not impact the use of this product.
- Do not use corrosive or abrasive materials to clean this product and please dispose of cleaning solutions in an environmentally friendly manner.
- Understand the risks associated with using this product. Children or those with cognitive impairment should not use this product without supervision.
- If the power supply cord is damaged or broken, it must be replaced by the manufacturer or a relevant specialist to avoid any injuries.
- Please operate in a clean and safe environment. For example, do not left around your tools. And always be careful to deal with packaging materials, in order to avoid any kinds of possible danger. Potential chocking risk exists when children play with plastic bags!
- If necessary, retain the original package for future transportation.

Recycling and Disposal



This product cannot be disposed of as household waste. To prevent damage to the environment, this product should be recycled. Please use the relevant recycling systems available to you or contract the distributor or manufacturer for recycling assistance.

Limited Warranty

This limited warranty covers defects in material or workmanship in new products. This warranty extends to the original purchaser only and is non-transferable.

What is Covered?

The limited warranty covers our products against defects in material or workmanship as follows:

Standing Desk

All standing desks feature a 5-year warranty for the frame and 2-year warranty for the controller, electronics and other mechanisms.

What are your Remedies?

We will replace at no charge to the consumer the defective parts only or, at our option, replace any product or part of the product that is defective because of improper workmanship and/or material, under normal installation, use, service and maintenance. If we are unable to provide a replacement and repair is not practical or cannot be completed in a timely fashion, we may elect to refund the purchase price in exchange for the return of the product. In the rare event that your product is defective, we will provide you with a replacement item shipped at no cost to you within the continental United States. The shipping method for replacement products is FedEx Ground, but expedited shipping is available if you choose to pay the additional expense. In addition, you will need to pay the shipping costs if any products need to be shipped to you at an address outside the continental United States.

REPAIR OR REPLACEMENT (OR, IN LIMITED CIRCUMSTANCES, REFUND OF THE PURCHASE PRICE) AS PROVIDED UNDER THIS WARRANTY IS THE EXCLUSIVE REMEDY OF THE PURCHASER. WE NEITHER ASSUME NOR AUTHORIZE ANY PERSON TO CREATE FOR ANY OTHER OBLIGATION OR LIABILITY IN CONNECTION WITH THIS PRODUCT.

What is Not Covered?

Our limited warranty does not cover any problem that is caused by:

1. Conditions, malfunctions or damage not resulting from defects in material or workmanship.
2. Conditions, malfunctions or damage resulting from normal wear and tear, improper installation, improper maintenance, misuse, abuse, negligence, accident or alteration.
3. Accessories, connected materials and products, or related products not manufactured by ours.
4. Conditions, malfunctions or damage resulting from failure to follow the instructions and guidelines relating to the product's intended use.

Our limited warranty is void if a product is returned with removed, damaged or tampered labels or any alterations (including removal of any component or external cover).

How to File a Claim?

In order to receive the benefit of our limited warranty, you need to process your claim in compliance with the terms of this limited warranty and follow proper return procedure. To request warranty service, please contact customer service, toll free at +1 (855) 585-5618. You will need to provide the sales receipt or other evidence of the date and place of purchase for your product.

Implied Warranties and Limitation of Damages

EXCEPT TO THE EXTENT PROHIBITED BY APPLICABLE LAW, ALL IMPLIED WARRANTIES (INCLUDING WARRANTIES OF MERCHANTABILITY AND FITNESS FOR A PARTICULAR PURPOSE) SHALL BE LIMITED IN DURATION TO THE DURATION OF THIS WARRANTY, AND WE SHALL NOT BE LIABLE FOR ANY INCIDENTAL, INDIRECT, SPECIAL, OR CONSEQUENTIAL DAMAGES, INCLUDING BUT NOT LIMITED TO LOSS OF PROFITS OR REVENUE, RESULTING FROM ANY BREACH OF EXPRESS OR IMPLIED WARRANTY OR CONDITION, OR UNDER ANY OTHER LEGAL THEORY, EVEN IF WE HAVE BEEN ADVISED OF THE POSSIBILITY OF SUCH DAMAGES. Some jurisdictions do not allow limitations on the duration of an implied warranty or the exclusion or limitation of special, indirect, incidental or consequential damages, so the above limitations or exclusions may not apply to you.

Governing Law

This Warranty shall be governed by the laws of the State of California, USA, without giving effect to any conflict of laws principles that may provide the application of the law of another jurisdiction.

How State Law Applies

This Warranty gives you specific legal rights, and you may also have other rights which vary from state to state.