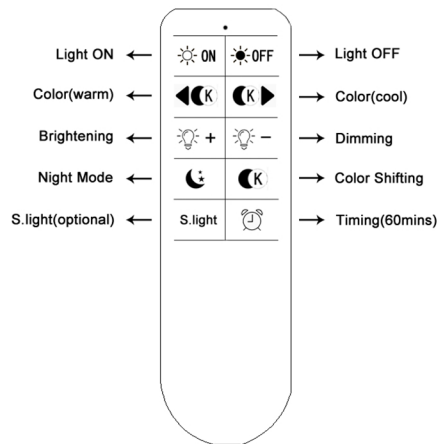
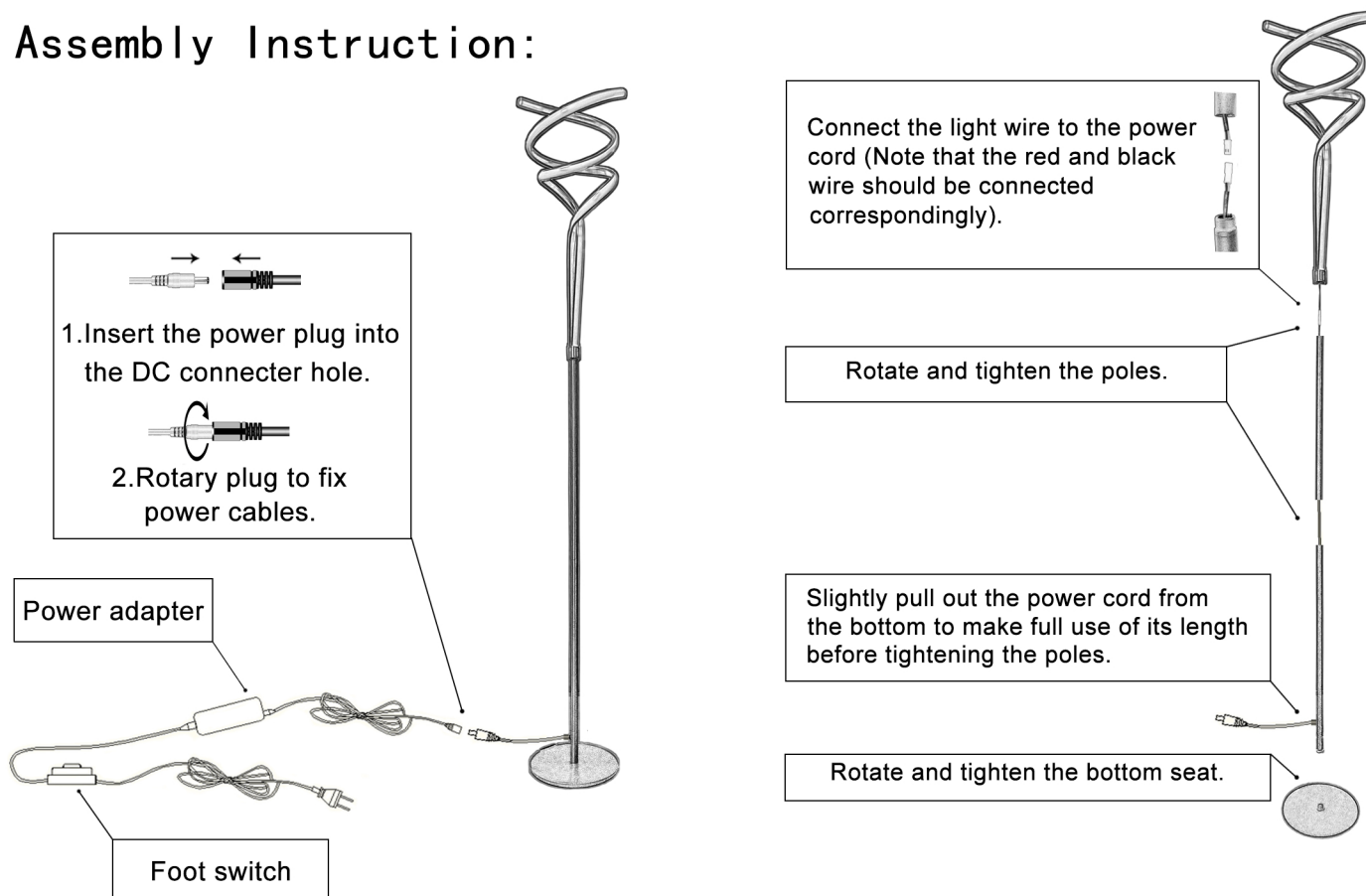


Instruction for Remote Control:



- 1.The button with MOON PATTERN represents “Night Mode” feature,which is able to reset the brightness and color of the lamp to default.
 - 2.Push the timing button, if the lamp flashes two times in a row,it indicates that 60mins timing function has been initiated.
 - 3.Code pairing should be performed before using the remote when it is unable to control the light, please complete the following steps below:
 - ①.Power on the lamp and press the “ON” button of the remote(“ON” button should be pressed within 3 seconds after the lamp turned on).
 - ②.If the light flashes 3 times after step 1, it indicates that the remote is successfully paired with the lamp.
- For more details please check remote control instruction.
 Note:Please ensure that the FOOT SWITCH is ON before use remote control.

Assembly Instruction:



- Note: 1.All operations must be performed only after switching off or powering off.
- 2.It is normal that yellow light spots appear from the light strip after brightness is adjusted to the minimum.
 - 3.The minimum brightness is not equal to 0% brightness.
 - 4.The lampshade may be slightly separated during transportation, which results in light leakage, it can be easily fixed by pushing it gently by hand.