



Replacing the Batteries or the Battery Pack



Whether you have one of our newer models with 12 LEDs and just need to replace the batteries, or you have an older model with 6 LEDs and need to replace the battery pack, these instructions will guide you, step-by-step, through the process.



Step 1: Loosen Faceplate



Remove the circled screws from the nuts.



Loosen the screws on the side of the faceplate. There is one screw on each side.

Step 2: Open Faceplate

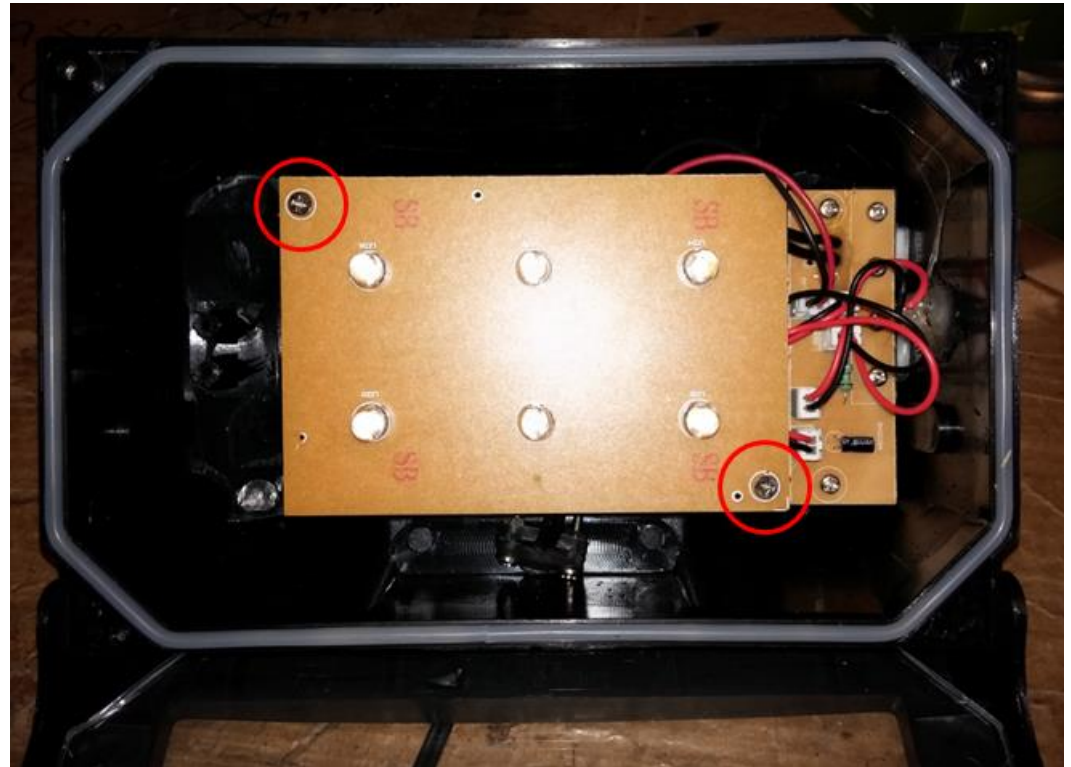
Once the front screws have been removed and the side screws have been loosened, rotate the faceplate forward and down, exposing the reflecting tray.



Step 3: Remove Reflective Plate

Pull the reflective plate out of the light. It should lift right out and expose the LED board. You will see two screws holding the LED board in place (circled in red). Remove them.

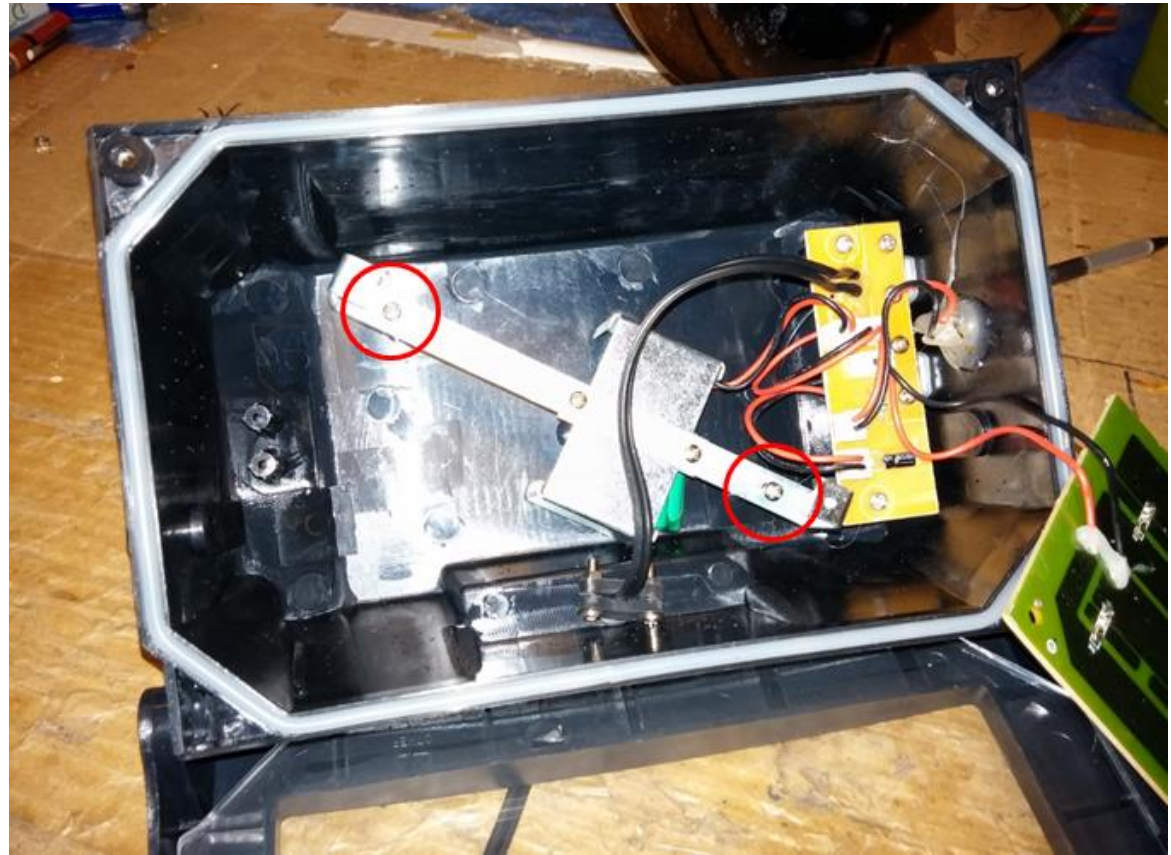
Keep track of the bolts. You will need to switch one with one of the bolts later on.



Step 4: Remove the LED Board

Pull the LED board out. Be careful not to sever the wires connecting the LED board to the control board still within the body.

Once removed, you will see the stand-off bracket. Remove the outermost screws of the stand-off bracket, circled in red.



Step 5: Remove the Bracket

After removing the screws, remove the bracket. This will expose the battery pack. You will see the battery pack is plugged into the control board.



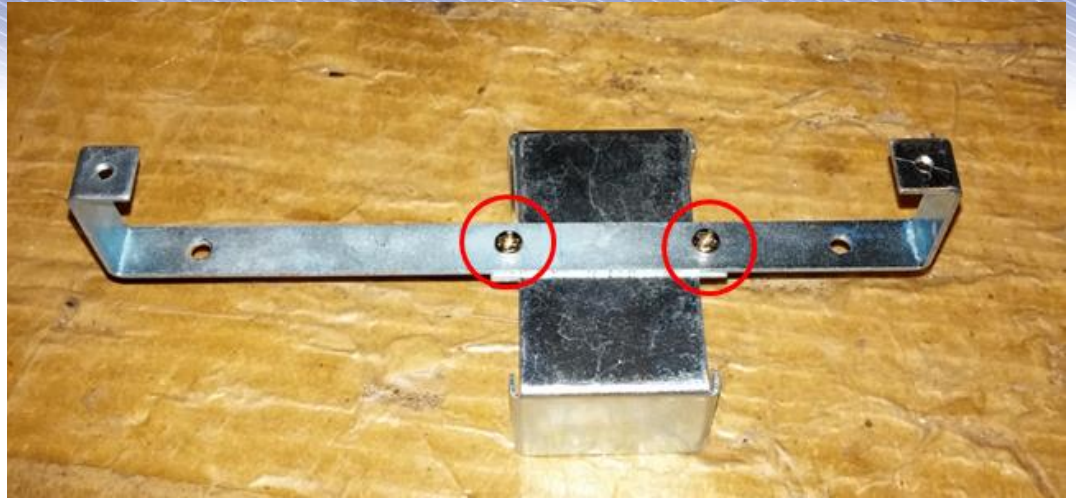
Step 6: Remove the Battery Pack

Unplug the battery pack and
take it out of the light



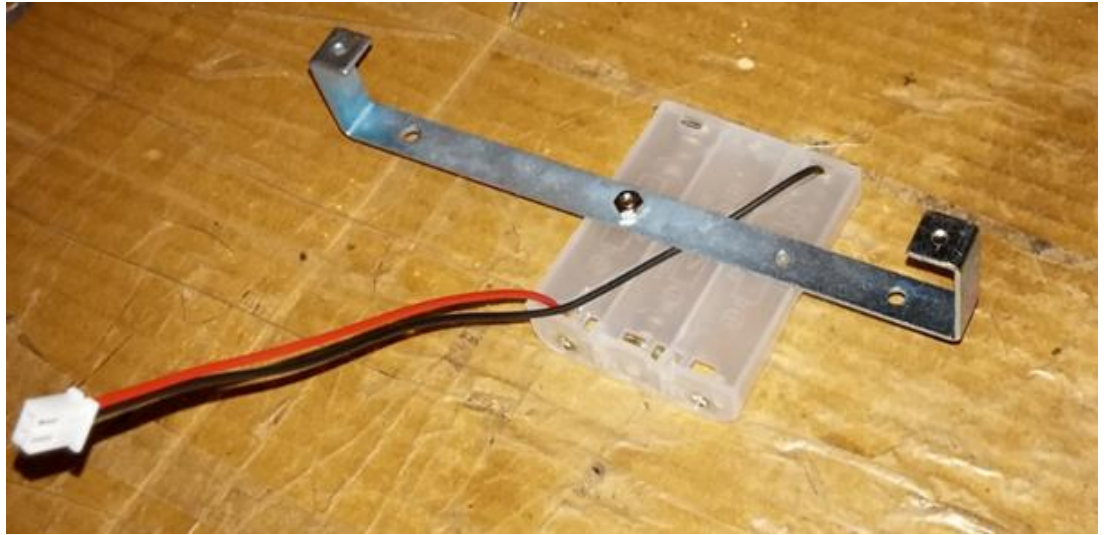
Step 7: Remove Cover from Bracket

Go to the bracket removed in Step 5. There are two nuts and bolts holding the battery pack cover to the bracket. Remove them so the cover is no longer attached to the bracket.



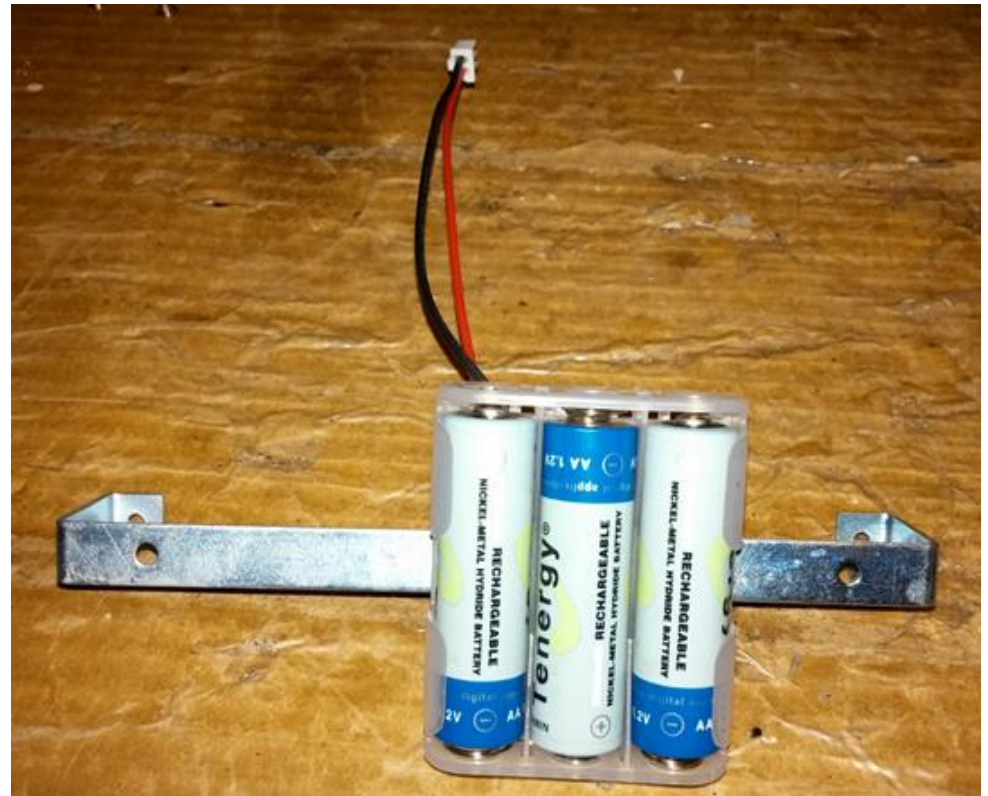
Step 8: Attach Battery Tray to Bracket

Use the bolt set aside from Step 3. Place it through the battery tray, then through the bracket. Put a nut on the end of it and tighten it. Note the orientation of the pieces, be sure yours matches. The holes in the bracket do not exactly match up to the holes in the battery tray. You only need to secure one hole, as shown in the picture.



Step 9: Insert batteries

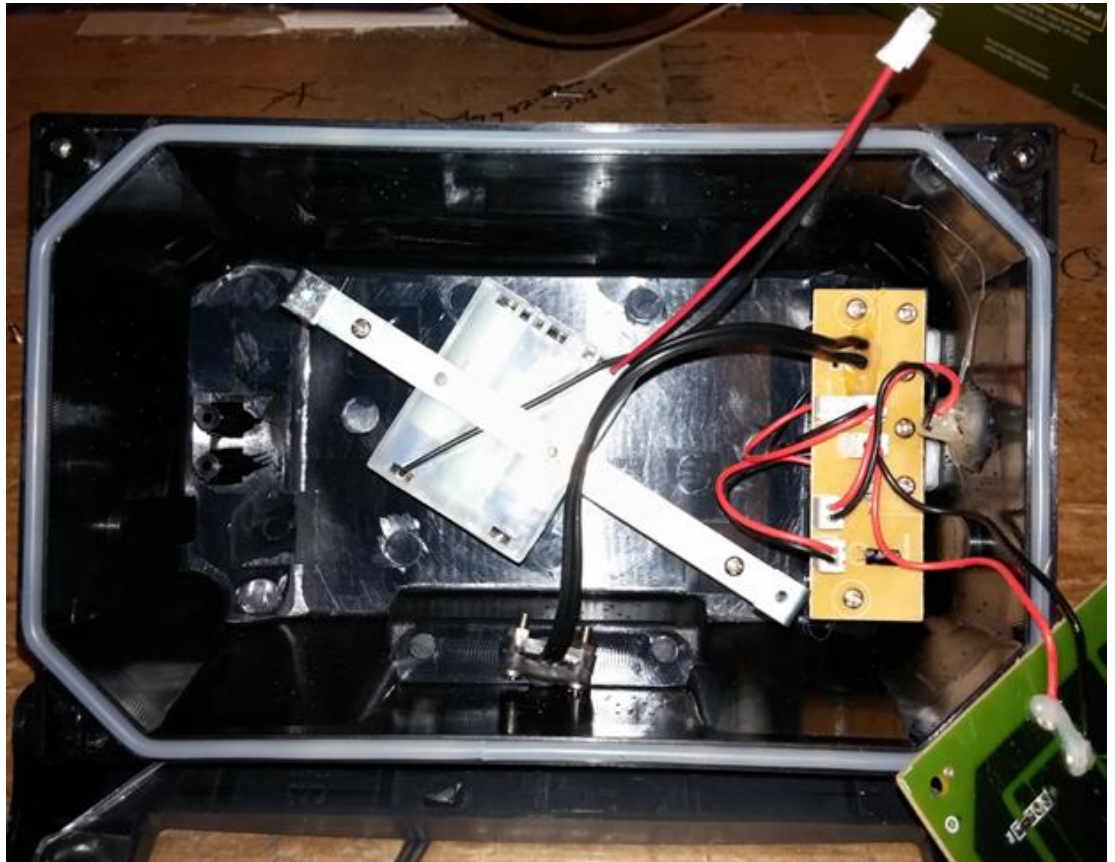
Insert 3 rechargeable AA batteries into the battery tray.



Step 10: Reinstall Bracket

Place the bracket back into the body of the light. Be sure the plug from the battery tray is on the same side as the control circuit board.

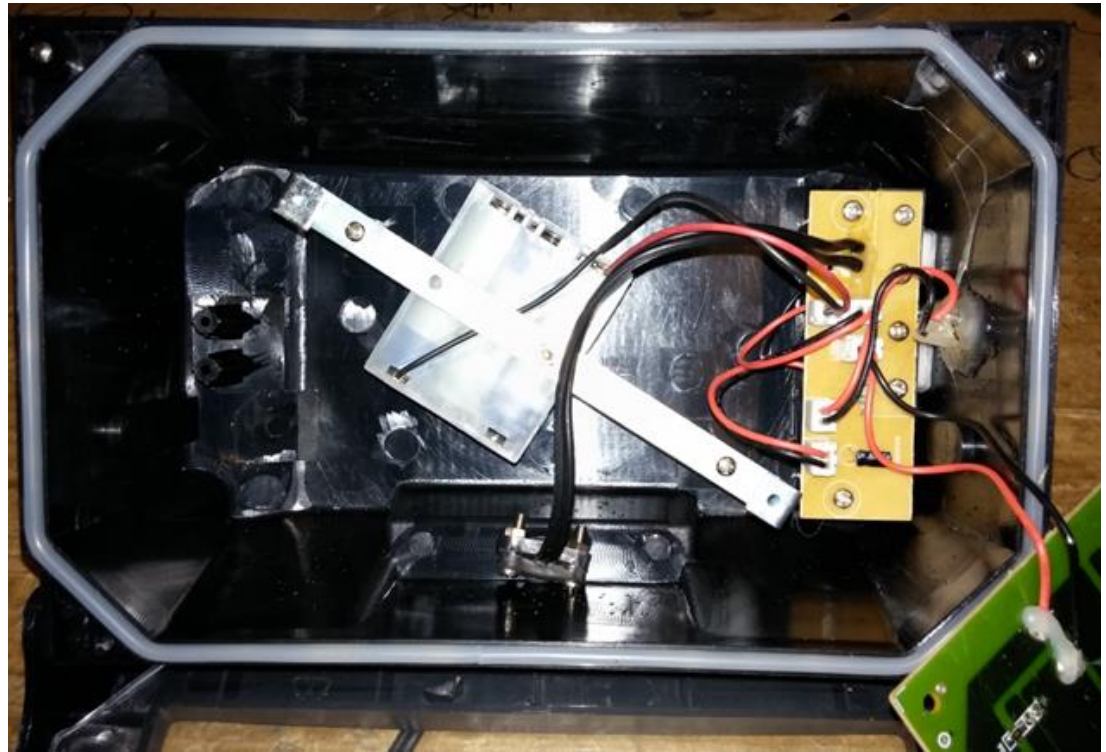
Use the two screws previously removed to attach the bracket back to the stand-offs in the body.



Step 11: Plug Tray into Control Board

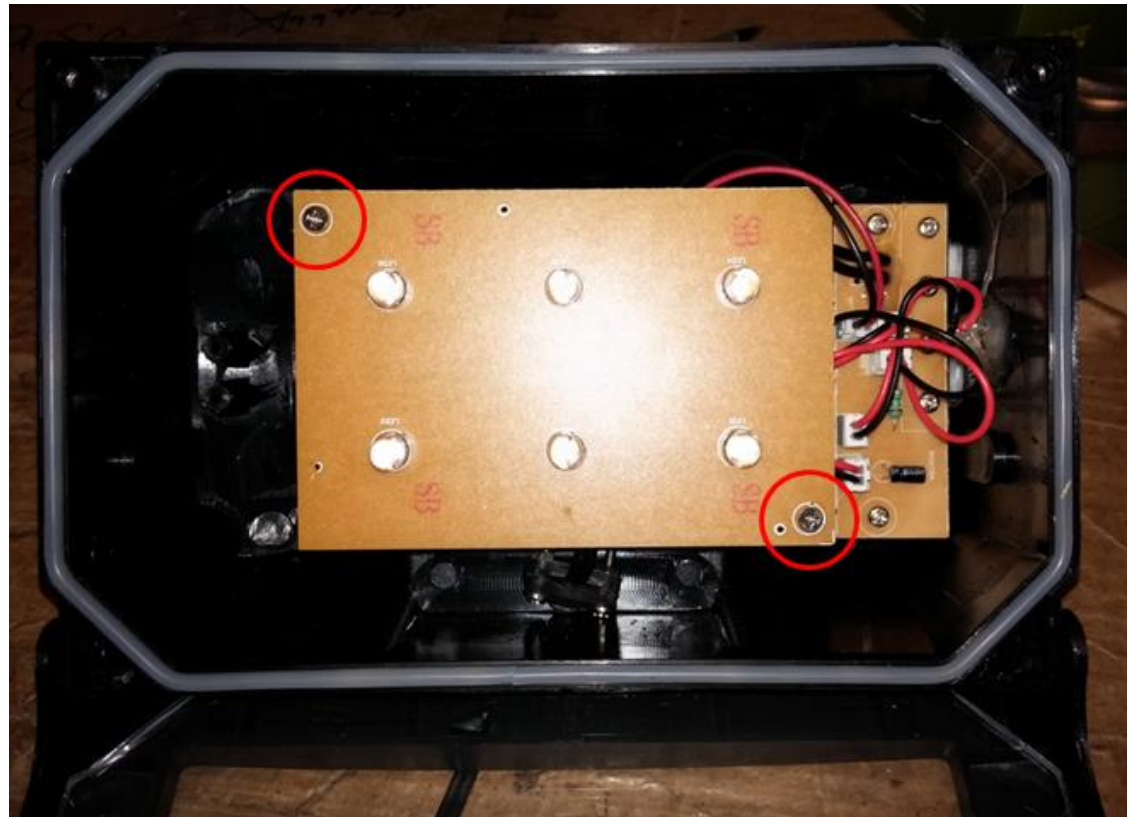
Take the plug from the battery tray and plug it into the same socket on the control board where the original battery pack was attached. Be sure the orientation is correct or it will not fit.

Once plugged in, press the ON/OFF button on the outside of the light. If you installed it correctly, the LEDs should activate.



Step 12: Replace LED Board

Put the LED Board back in place on the bracket. Use the remaining bolt from when you first removed it, and one the remaining bolt from Step 7 when you removed the battery cover from the bracket.



Step 13: Close Light Face

Place the reflective plate back over the LED board. Rotate the face of the light upwards so it closes. Insert and tighten the screws on the front. Then tighten the screws on the sides of the faceplate.

