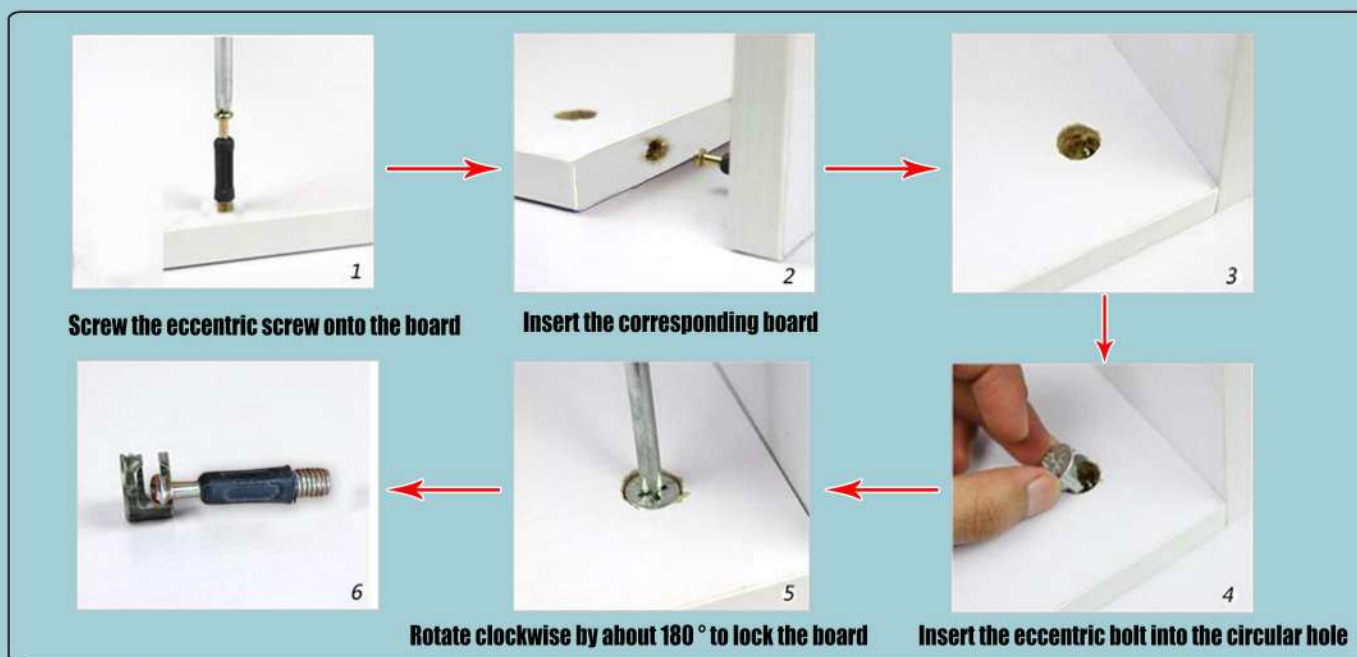


# INSTALLATION MANUAL

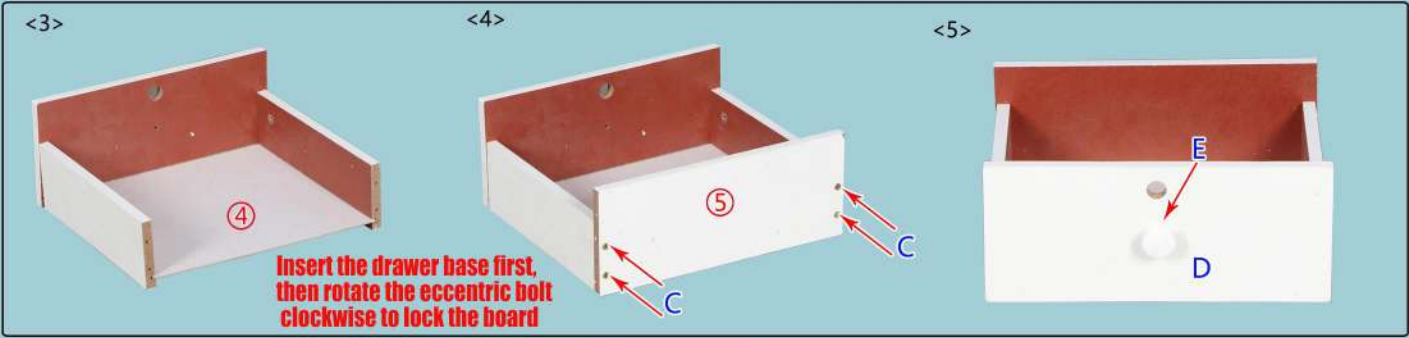
|   |   |   |   |   |   |  |   |   |
|---|---|---|---|---|---|--|---|---|
|  |  |  |  |  |  |  |  |  |
| <b>Eccentric screw</b>  | <b>Eccentric bolt</b>   | <b>3.5CM self tapping screw</b>   | <b>Handle</b>   | <b>Handle screw</b>   | <b>Minimum self tapping screw</b>   | <b>Lock kit</b>  | <b>Small nail</b>   | <b>Metal pin</b>  |
| A*8   | B*8   | C*40  | D*2   | E*2   | F*4   | G*1  | H*10  | I*4   |

## Installation principle of eccentric parts:

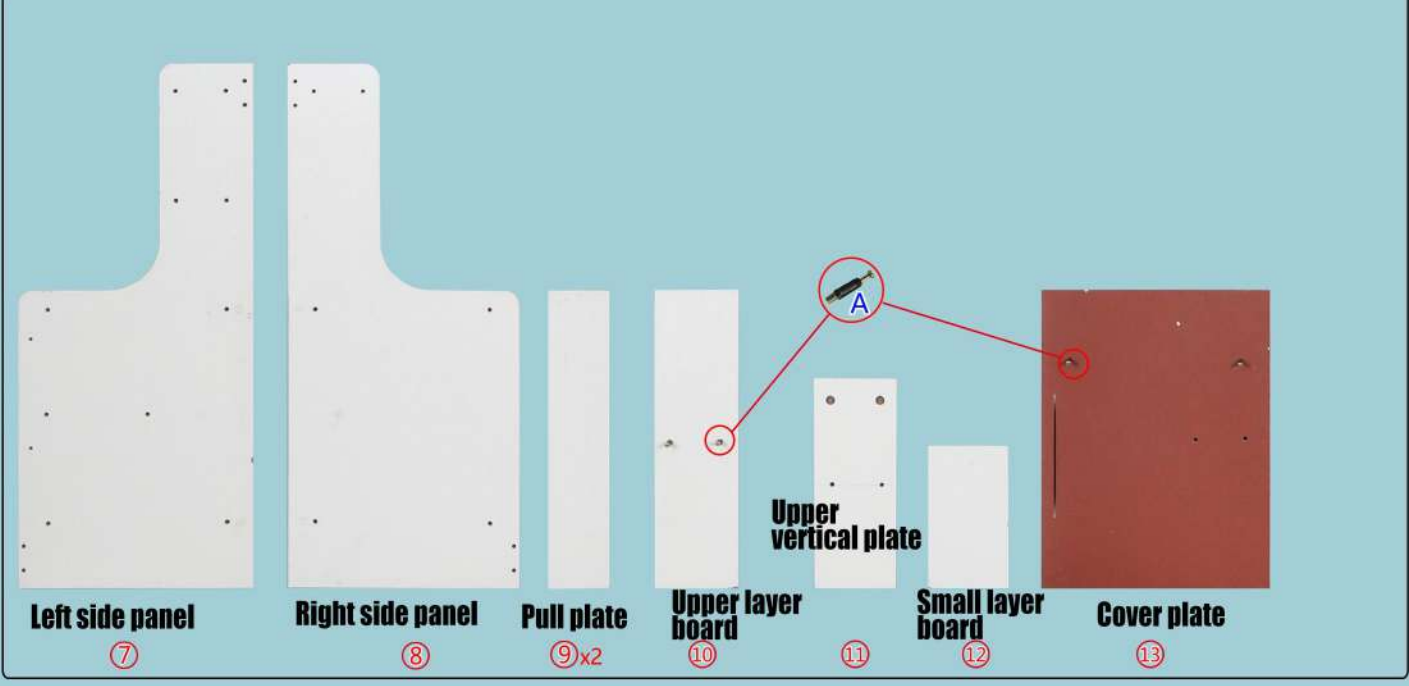


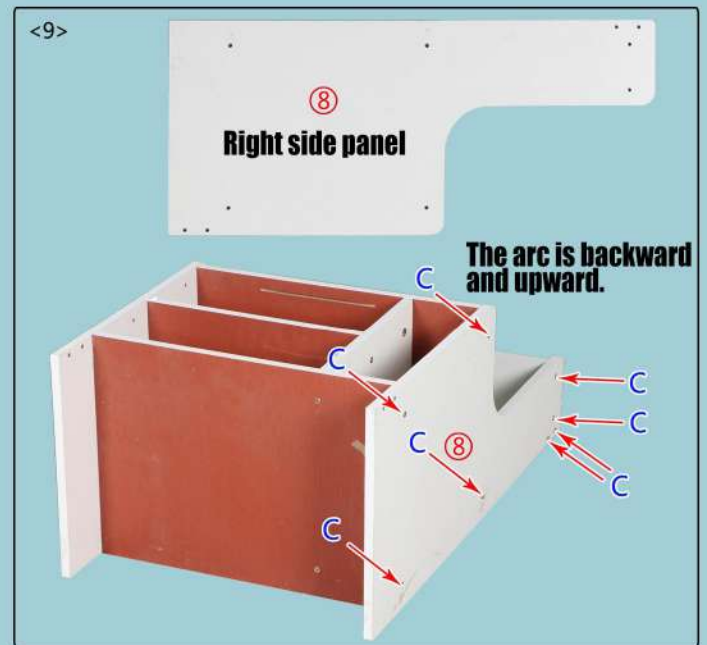
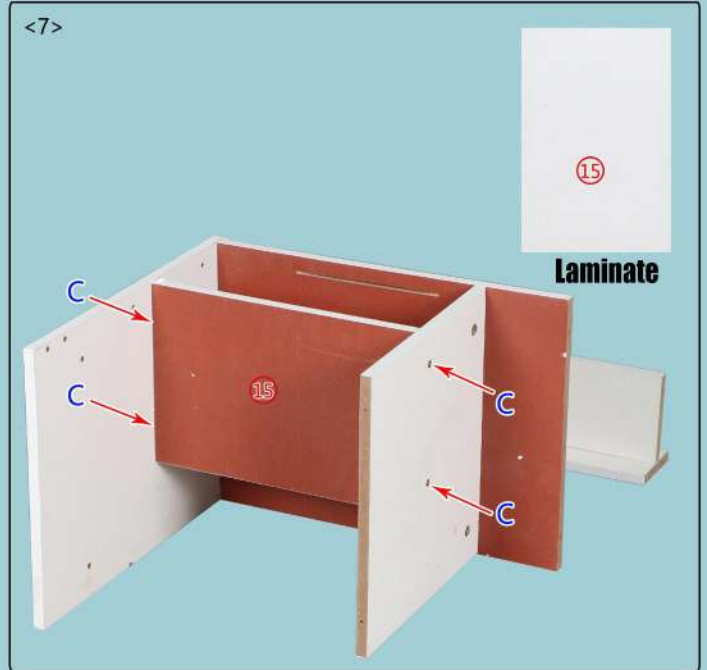
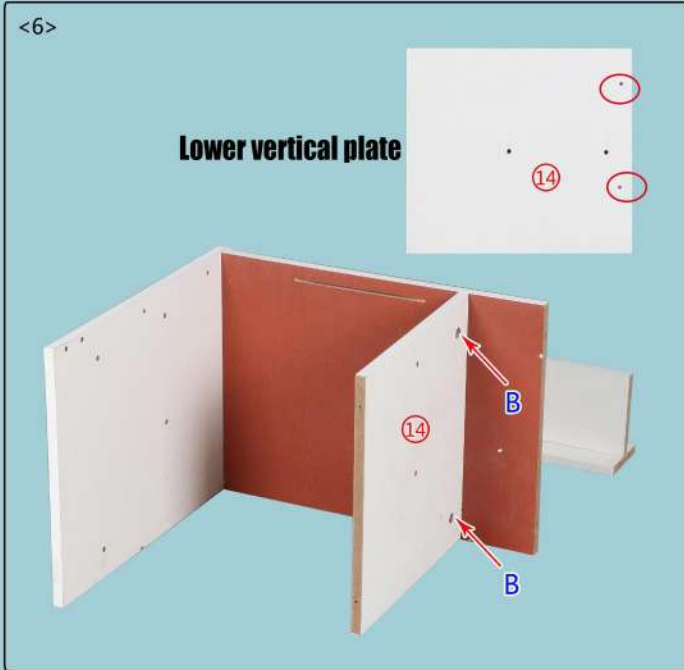
## Installation steps:





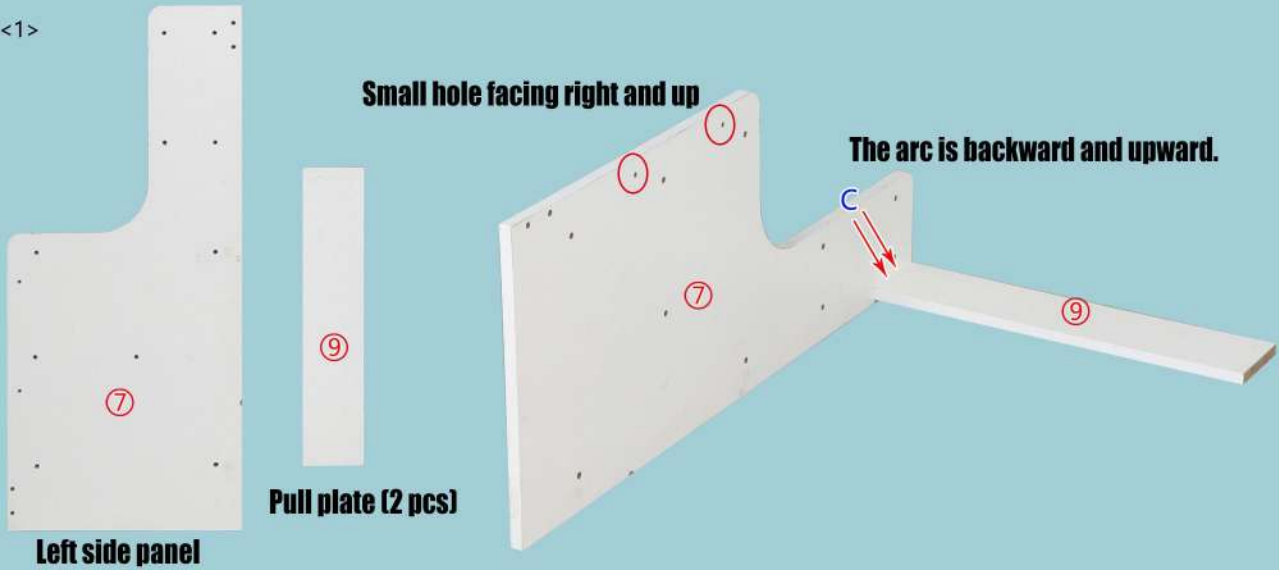
**Plate name and serial number:**



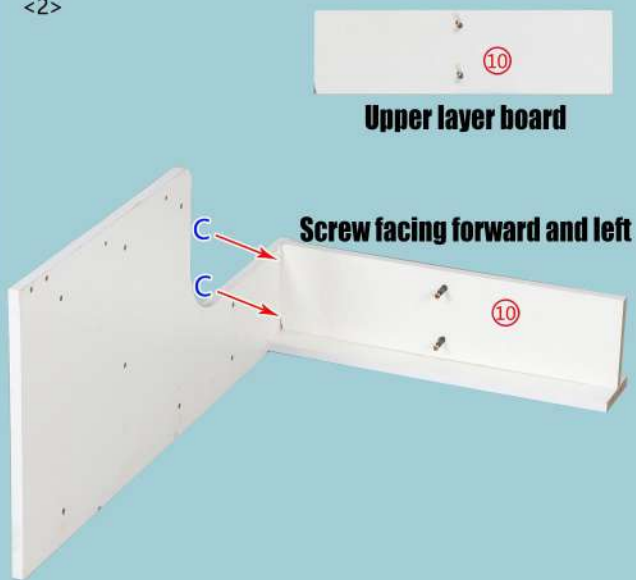


## Step 2: Overall partial installation

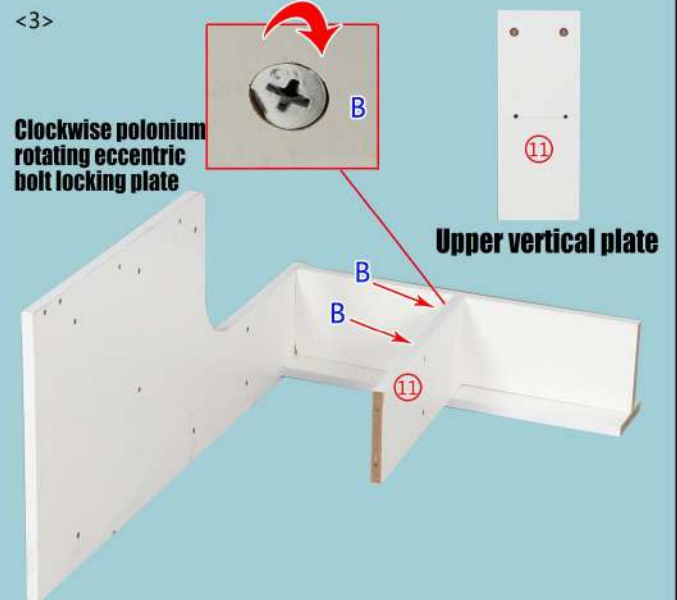
<1>



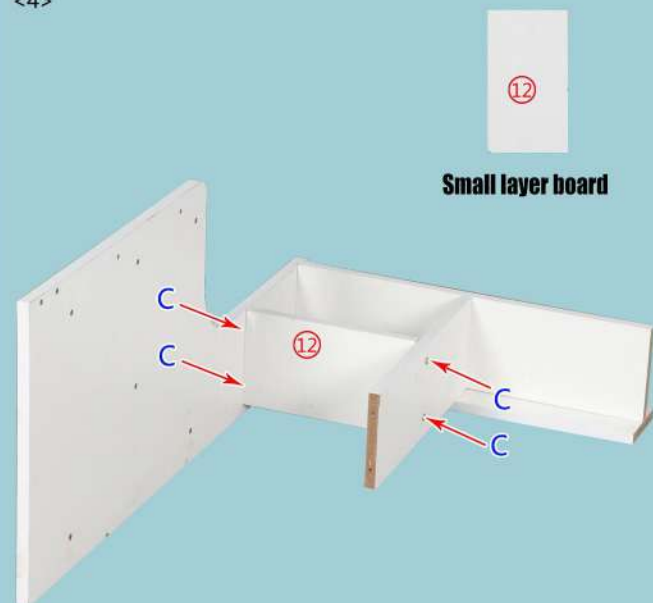
<2>



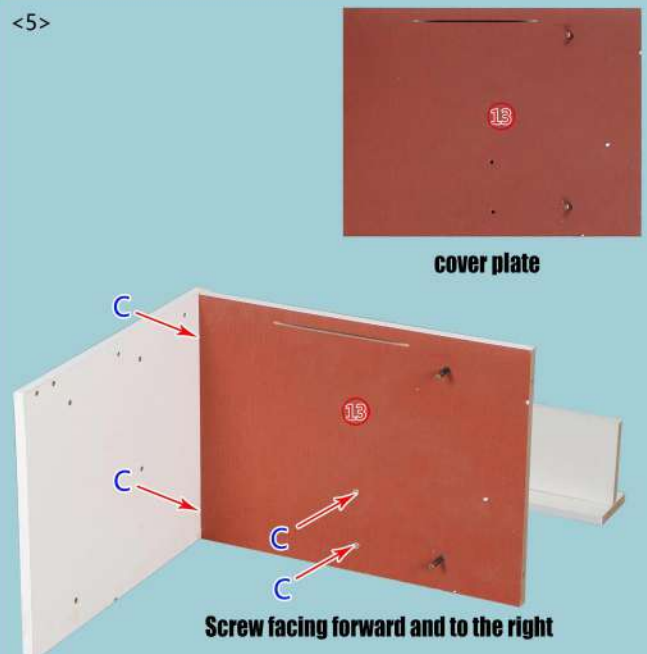
<3>



<4>



<5>



<12> **Slowly push in the drawer:**

**Method 1: Push in the drawer and insert the metal pin.**

**Method 2: After inserting the metal pin, tilt the drawer 45 degrees and push it in.**



**Insert the metal pin to prevent drawers from falling out when they are pulled out.**

<13> **Installation completed !**

