



# Trailer Loading Quality and Utilization Guide

Loading a trailer in a safe and efficient manner saves all parties time while limiting damage to products. Below are the steps that Wayfair recommends all parties use.

## Good Trailer Loading Practices

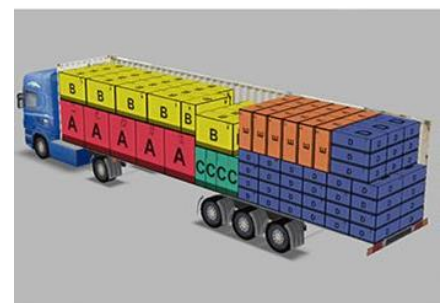
- ❖ Plan pick path or stage product on the dock floor to visualize the freight mix and enable an efficient load out.
  - Efficient load outs have loose freight in the head with any pallets placed towards the tail of the trailer.
- ❖ Prior to loading freight onto the trailer, be aware if there are additional stops after yours by asking the driver.
  - Large loose items should be loaded first on the floor in the head of the trailer.
  - Reduce the size/weight of boxes as you move towards the tail
- ❖ Stack freight floor to ceiling, head to tail, to best utilize trailer space.
- ❖ Load all 53' of a trailer. If the trailer door is a roll top please leave 1' of space above product for door clearance.
- ❖ Straps/tension bars should only be used at the most tail portion of freight in the trailer to prevent movement. (see *image A*)

## Loading “Do”s

- Do load pallets with fork entry points facing the tail of the trailer
- Do load all freight from front to back to prevent shifting of product
- Do pack cartons with no gaps between pieces, maximizing space utilization
- Do load pallets of similar height next to each other

## Loose Freight

- ❖ Large pieces are floor-loaded from the nose to the tail of this trailer with smaller/lighter pieces stacked on top to maximize space usage. (see *image A*)
- ❖ To best stabilize product and prevent shifting in transit, products should be stacked cross directionally to the trailer. (see *image B*)





# Trailer Loading Quality and Utilization Guide

## Good Trailer Loading Practices (Cont.)

### Palletized

- ✦ Palletized freight is securely strapped to the pallet. (see image C)
- ✦ Pallets are placed close to each other to remove gaps between products. (see image C)
- ✦ Freight should never overhang a pallet.
- ✦ All pallets are built “High and Tight”, having freight as vertical as possible to ensure full cube utilization.
- ✦ Ensure all labels are placed properly on cartons and are visible after strapping and shrink wrap are applied

C.



## Poor Trailer Loading Practices

Poor loading practices cause under-utilized space and poorly/dangerously stacked freight causes damage to product and overall increased time to customer.

### Loading “Don’t”s

**Don’t** stack pallets on top of other pallets

**Don’t** turn a two-way entry pallet perpendicular to the tail of the trailer

**Don’t** leave space between pallets and loose freight

- This helps to prevent the shifting/tipping of product (see image D)
- Brace heavy items next to heavy items with no gaps

**Don’t** place large/heavy boxes on top of small/light boxes

- Placing heavy items on top of boxes greatly increases the risk of damage (see image E)

### All Freight

- ✦ Twine should never be used in trailers to secure freight.
  - By following “good loading practices” freight should not need to be strapped to the walls of trailer.

D.



E.





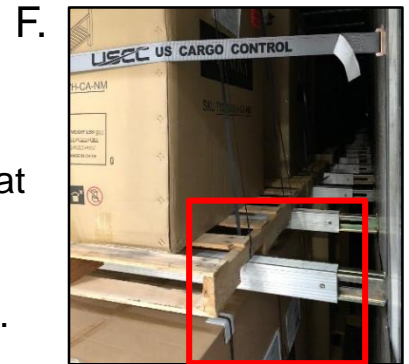
# Double Deck Trailer Loading Practices

Loading a double deck trailer can be intimidating and tricky at times, Wayfair recommends that all shippers follow these quick tips to successfully load a double deck trailer while following our standard freight loading guidelines.

## Double Deck Pallet Criteria

When identifying pallets that are safe to load on the top level of the racking, please ensure they meet the following criteria:

- ✦ 4 way-entry pallets are best for loading on the top deck so that the side entry sits on the load bar preventing the pallet from shifting. (see image F)
- ✦ The pallet is long enough to overhang on at least 2 load bars.



## Good Loading Practices

- ✦ Use ratchet straps on the most tail pieces of top-level freight. (see image G)
  - Top heavy product (ex. Vanities) should be strapped closer to the top of the product.
- ✦ Add cardboard between stops of multi-stop loads to clearly visualize the difference between stops.



## Poor Loading Practices

- ✦ The top deck of a trailer must be densely loaded from side to side (see image G), this helps to prevent shifting and flipping of product. (see image H)
  - Straps should be used on the top deck for extra security.

