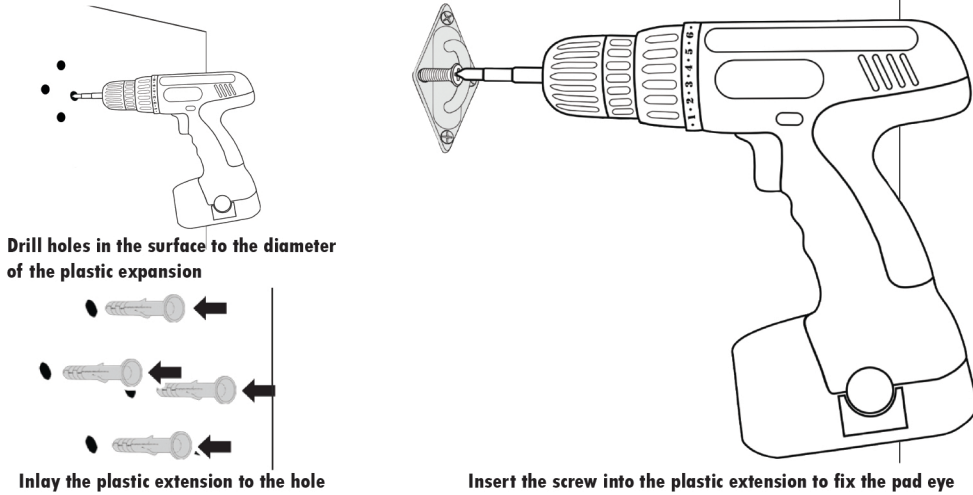
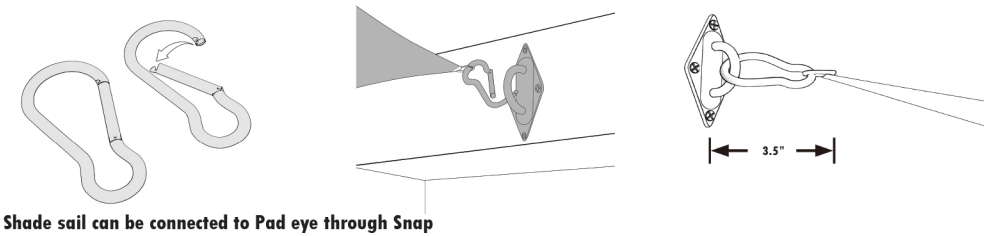


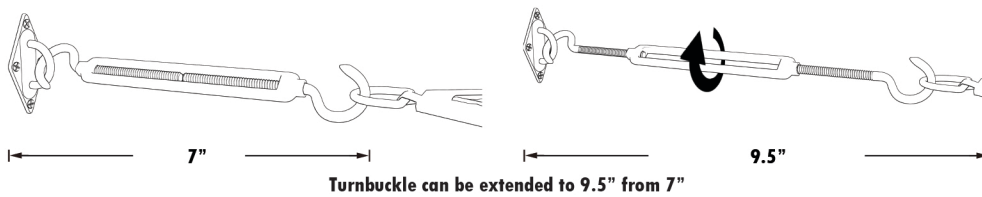
## (2) Pad eye installation



## (3) Snap hook placement

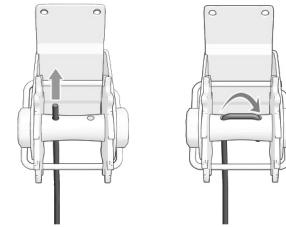
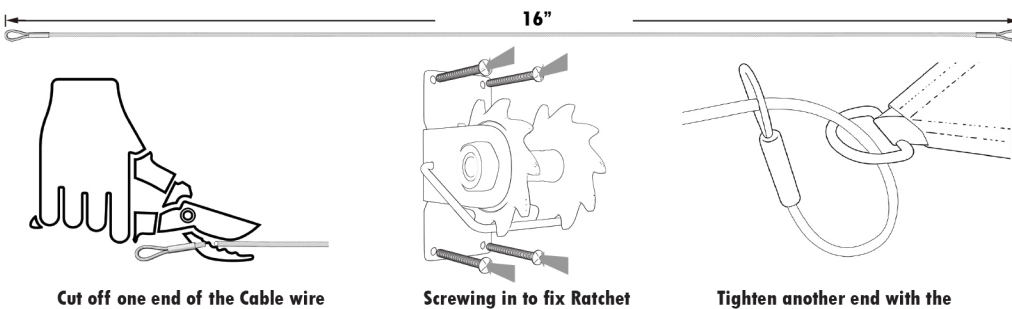


## (4) Turnbuckle placement



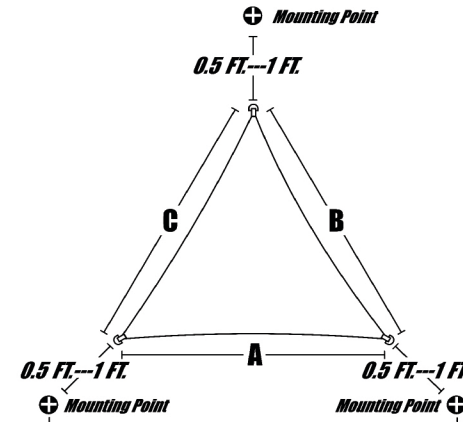
## (5) Cable wire rope installation

\* If the distance between Pad eye and D-ring is too long (more than 15 inches), it is recommended to use Cable wire



insert the cut off end of the cable wire rope into the holes on the ratchet winch

## 3, How to measure



Determine what size shade sail you will need

Take stock of your installation hardware; you should have four mounting fixtures (Pad eyes or ratchet winch wall mounts), four linking accessories (turnbuckles, snap hooks), and extension wire ropes if necessary.

Connect one corner of your shade sail to one side of the turnbuckle and the pad eye to the other side of the turnbuckle.

Repeat this process with the rest of the corners using the turnbuckles and snap hooks remaining in your installation kits.

You may notice wrinkles in the fabric and sagginess, properly tension your shade sail using your turnbuckles until the shade sail is rigid and there are little to no creases.

## 6, Disclaimer

End-User License Agreement ("Agreement")

Last updated: September 15, 2021  
Please read this End-User License Agreement

Term and Termination

This Agreement shall remain in effect until terminated by Colourtree Inc.

Colourtree Inc. may, in its sole discretion, at any time and for any or no reason, suspend or terminate this Agreement with or without prior notice. This Agreement will terminate immediately, without prior notice from Colourtree Inc., in the event that you fail to comply with any provision of this Agreement.

Severability

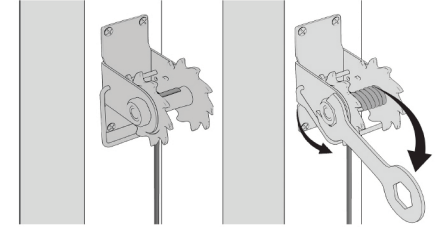
If any provision of this Agreement is held to be unenforceable or invalid, such provision will be changed and interpreted to accomplish the objectives of such provision to the greatest extent possible under applicable law and the remaining provisions will continue in full force and effect.

Amendments to this Agreement

Colourtree Inc. reserves the right, at its sole discretion, to modify or replace this Agreement at any time. If a revision is material, we will provide at least 30 days' notice prior to any new terms taking effect. What constitutes a material change will be determined at our sole discretion.

Contact Information

If you have any questions about this Agreement, please contact us.



Fasten the cable wire rope with a wrench, then fasten the gear under the ratchet winch to the cog

