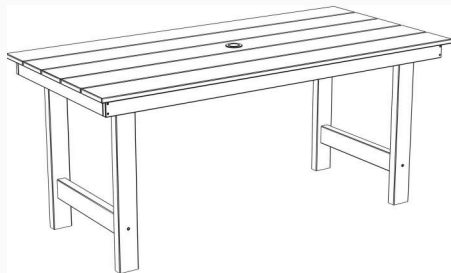


# HDPE Dining Table

## Assembly Instructions



**Important** - Please read these instructions fully before starting assembly



220 LBS CAPACITY



1 PERSON ASSEMBLY

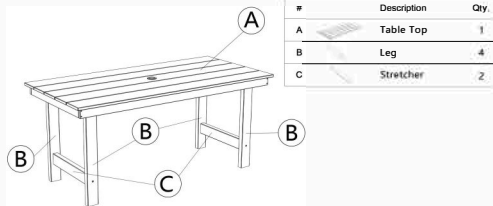


AROUND 10 MIN ASSEMBLY

## Components

Please check you have all the components listed below

Note: The illustration of the product shows the exact position of each part. Check when assembling.



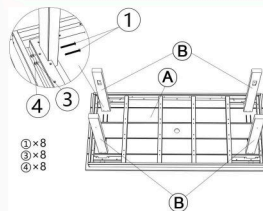
## Hardware & Tools

Note: The quantities below are the correct amount to complete the assembly. In some cases more fittings may be supplied than required.



## Assembly Instructions

**Caution** Please do not over-tighten bolts and screws during assembly

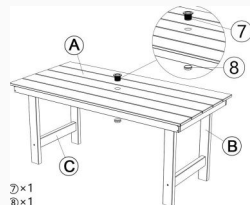
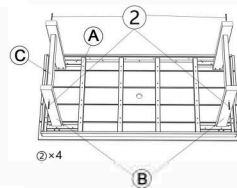


### STEP 1

Place the "Table Top (A)" upside down on the ground and attach four "Legs (B)" to create a leg frame. Use "1 M6x80MM Bolt", "3 Washer" and "4 Nut" to secure the parts and tighten them with a "5 Wrench" and "6 Hex key".

### STEP 2

Attach the two "Stretchers (C)" to the leg frame to create the table structure. Use four "2 M6x70MM Screws" and tighten them with a hex key.



### STEP 3

Using the "7 and 8" to seal the hole on "Table Top (A)" - This is an umbrella hole suitable for most of patio umbrella, you could unseal it to attach patio umbrella.

## Warnings

**Important** - Please read these instructions fully before starting assembly

Check you have all the components and tools listed on the page 2

Remove all fittings from the plastic bags and separate them into their groups

Keep children and animals away from the work area, small parts may cause choking if swallowed

Make sure you have enough space to layout the parts before starting

Assemble on a soft level surface to avoid damaging the unit or your floor.

Do not stand or put weight on the product, this could cause damage

Assemble the item as close to its final position (in the same area) as possible

Do not place furniture directly in front of radiators, fires, or any other source of heat.



The assembly will be easier with 2 people while 1 person could also do the job.



Refer to the LISTING page for specific installation videos

## Cleaning & Maintenance

• Clean the product with a solution of mild soap and water. Dip a soft cloth or sponge into the solution and wipe down the entire surface

• After cleaning, thoroughly rinse the furniture with water to remove any remaining soap residue

• When not in use, cover the product with a protective cover to keep it clean and prolong its lifespan