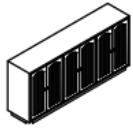
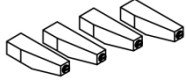






ASSEMBLY INSTRUCTION

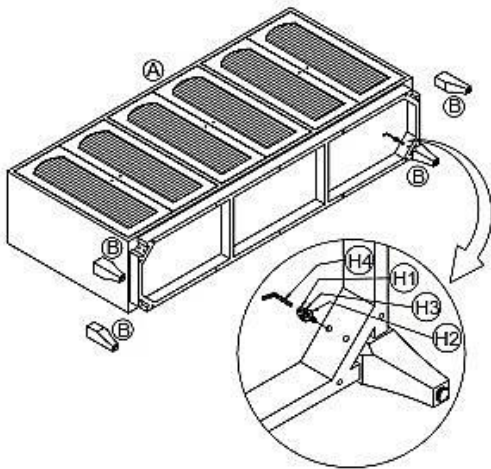
PARTS

	DESCRIPTION		
A	 Cabinet	1	
B	 Legs	4	

HARDWARE

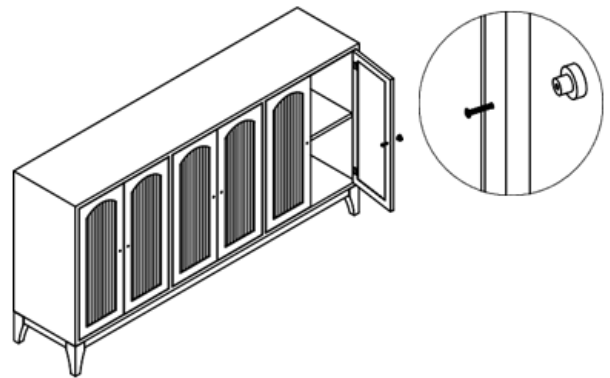
	DESCRIPTION		
H1	 Bolts (45 mm x 6 mm)	8	
H2	 Flat Washers (17 mm x 8 mm)	8	
H3	 Spring Washers (14 mm x 8 mm)	8	
H4	 Hex Key #4	1	

STEP-1



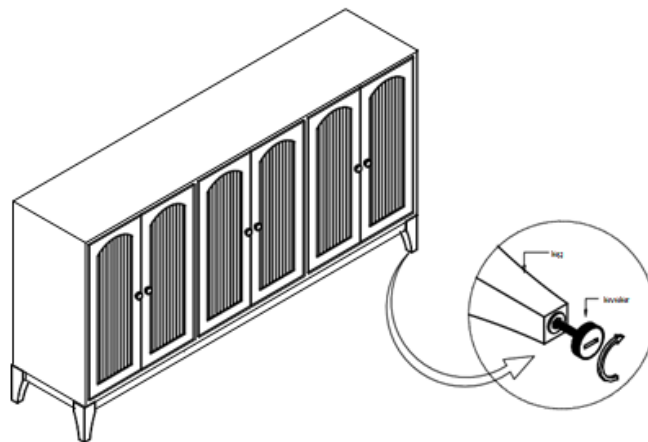
- Place Cabinet (A) in the position as shown in the picture above.
- Install the leg (B) parallel to the available hole then insert the Bolt (H1), Flat Washer (H2) and Spring Washer (H3) then tighten using the Key (H4).
- Do the same with the other leg.

STEP-2



- Open the door and take the handle inside, then attach the handle to the front door.
- Do the same on the other door.

STEP-3



COMPLETED

Leveller are provided at the bottom to the balance on uneven surface