



WARRANTY

Register your product within 30 days of purchase to activate its one-year limited manufacturer's warranty at OVENTE.COM

WARRANTY IS ONLY VALID IF YOU REGISTERED WITHIN 30 DAYS AFTER PURCHASE.

LIMITED ONE (1) YEAR WARRANTY

Your product has a one (1) year warranty period from the date of purchase from an authorized retailer. In the event that the product is defective, feel free to contact us to arrange for a replacement. This warranty only covers defects in workmanship and materials. The warranty does not include damage due to abuse or misuse, any commercial use or accidents.

LIMITATIONS

The warranty stated above is the only warranty applicable to this product. Other expressed or implied warranties are hereby disclaimed. No verbal or written information given by the Manufacturer, its agents or employees shall create a guarantee or in any way increase the scope and duration of this warranty. Repair or replacement as provided under this warranty is the exclusive remedy of the consumer. The manufacturer shall not be liable for incidental or consequential damages resulting from the use of this product. Any implied warranty of merchantability or fitness for a particular purpose on this product is limited to the applicable warranty period set forth above except to the extent prohibited by law. Consumer rights may vary from state to state.

Customer Service: (855) 926-2626
Visit us at ovente.com

OVENTE®

Professional Blender BLH1000 Series



Before using please read the instruction manual and keep it for future use.

IMPORTANT SAFETY NOTES

When using electrical appliances, basic safety precautions should always be followed.

- Do not leave your blender unattended.
- To protect against risk of electrical shock do not put the cord or the blender's base in water or other liquid.
- Close supervision is necessary when any appliance is used by or near children.
- Unplug from outlet when not in use, before putting on or taking off parts, and before cleaning.
- Do not use hot water to clean the blender.
- Do not operate appliance with a damaged cord or plug, or after the appliance malfunctions, dropped or damaged in any manner. Call our toll-free customer assistance number for information on examination or repair.
- The use of attachments, including jars, not recommended by the manufacturer may cause injury to persons.
- Do not use outdoors or in a damp area.
- Do not let cord hang over edge of table or counter.
- Keep hands and utensils out of container while blending to reduce the risk of severe injury to persons or damage to the blender. A scraper may be used but must be used only when the blender is not running.
- Blades are sharp. Handle them carefully.
- Always operate blender with lid in place.
- Do not blend hot liquids.

BLENDER MAINTENANCE

1. Always make sure that the unit is unplugged from the outlet prior to cleaning.
2. Clean the blender with soft, damp cloth or sponge
3. Do not touch the body wall with your hands, unless the blade is removed.
4. Do not use abrasive scouring pads.
5. Never immerse the blender in water or other liquids.

TROUBLESHOOTING BLENDER

In case the blender stopped working, press the red reset button at the bottom of the base of the blender. After you reset the machine, but it still not working, check as below:

1. Check if you have inserted the power plug
2. Check for fuse disconnect or automatic switch off
3. Check to see if power outage
4. If you do not see the above issues, call the repair center

ELECTRICAL REQUIREMENTS

Input Voltage: 120V

Power: 1000W

Hertz: 60Hz

6. After use, press ON/OFF button.
7. Unplug the power cord from the outlet.

Note: Tritan Large Jug maximum capacity is 1.5 L; travel jar maximum capacity is 400 ml. Do not exceed the rated capacity when processing food.

Add liquid ingredients first into the juice jar then solid food which will help blend the ingredients more evenly when stirring. To achieve the best result, cut the solid ingredients into about 0.5 in to 1 in dice.

PANEL FUNCTIONS

MIX: Mix and low running speed

BLEND: Mix ingredients in medium running speed

LIQUIFY: Dissolve food into liquid, such as Apple juice, carrot juice in medium running speed

PUREE: Food can be an instant hit into a mud-like, you can make some jam in medium running speed

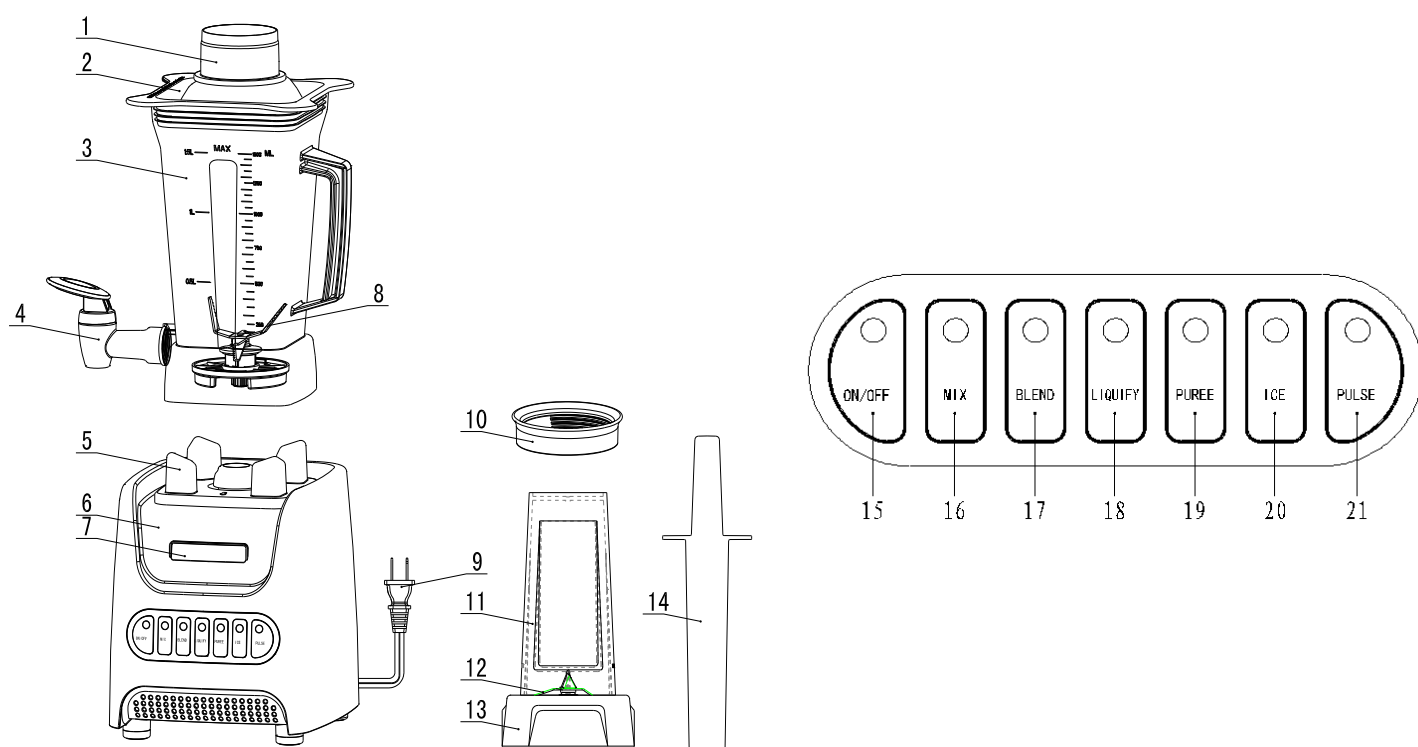
ICE: Ice blended foods, can also make drinks, ice cream in high running speed

Note: When using this function to blade dry ice, The large juice jar must not exceed 300g and the small juice jar not exceed 80g

PULSE: Crushing solids in high running speed

- This appliance should not be used by persons (including children) with reduced physical, sensory or mental capabilities, or lack of experience and knowledge, unless they are supervised by the person who is responsible for their safety.

BLENDER PARTS



- 1.** Measuring Cup
- 2.** Lid
- 3.** Tritan Large Jug
- 4.** Faucet
- 5.** Coaster
- 6.** Base
- 7.** LCD Display Window
- 8.** Large Jug Mixing Blade
- 9.** Power cord
- 10.** Travel Jar Ring

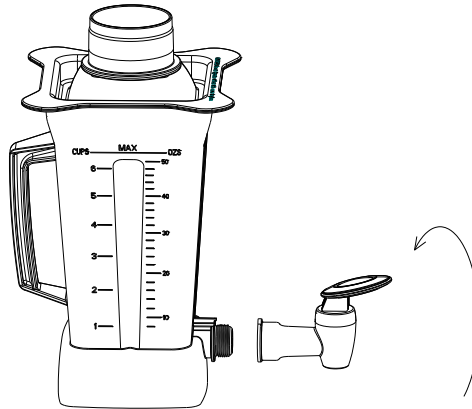
- 11.** Travel Jar
- 12.** Travel Jar Blade
- 13.** Travel Jar Cup Bracket
- 14.** Stirring Rod
- 15.** ON/OFF Button
- 16.** MIX Button
- 17.** BLEND Button
- 18.** LIQUIFY Button
- 19.** PUREE Button
- 20.** ICE Button
- 21.** PULSE Button

USING THE BLENDER

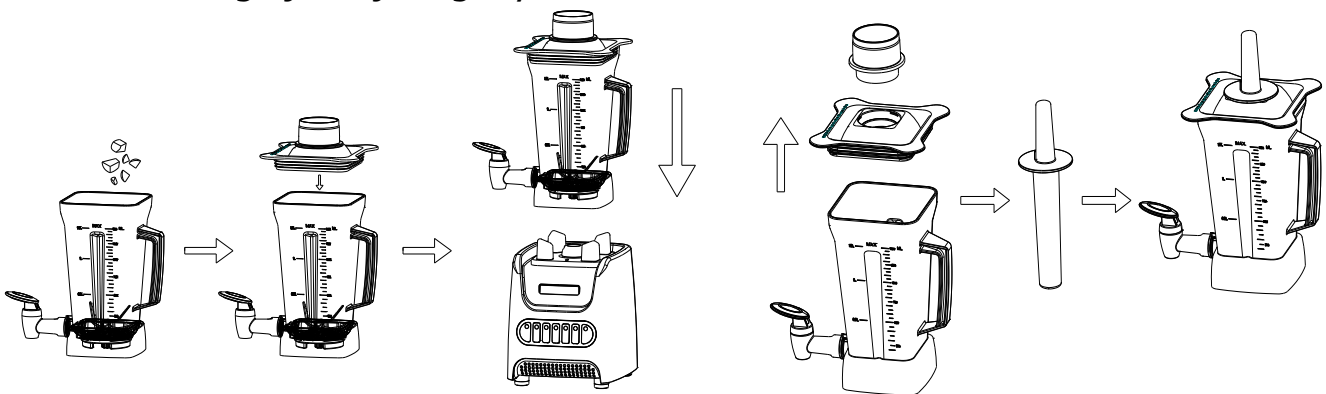
Remove all of the packing material, label or poster on the fruit juice. Do not immerse the main power unit in water or other liquid, otherwise it will cause electric shock or damage to the machine.

Tritan Large Jug Operation

1. Install the faucet in a clockwise direction.



2. Place the base of the blender on a flat surface.
3. Put prepared ingredients into large juice jar and cover the jar with lid. Make sure the lid covers large juice jar tightly.

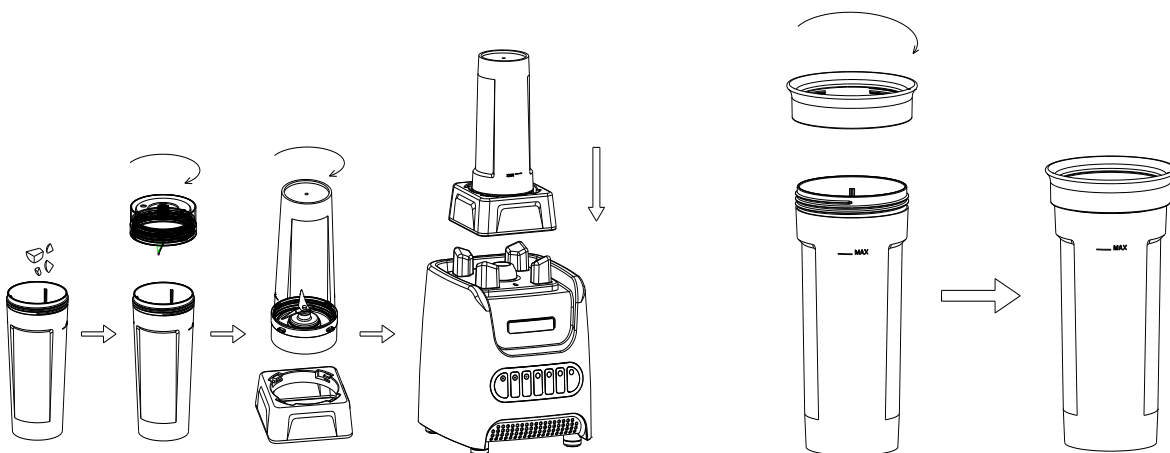


4. Insert the measuring cup into the hole, which is in the middle of lid.
5. Plug the power cord into the outlet.
6. ON/OFF button will light up. Press MIX button, indicator lights up, and starts to operate. If you need to switch into other function mode, press desired function button and the blend will switch automatically.

7. The machine shall not exceed in 3 minutes of use. Restart after 1 minute pause and run continuously for 10 cycle only.
8. After use, press ON/OFF button.
9. Unplug the power cord from the outlet.

Travel Jar Operation

1. Place the base on a flat surface.
2. Put the prepared ingredients into the large juice jar. Assemble the blade base with the travel jar bracket, and make sure the travel jar screws tightly with the small travel jar bracket.



3. Plug the power cord into the outlet.
4. ON/OFF button will light up. Press MIX button, indicator lights up, and starts to operate. If you need to switch into other function mode, press desired function button and blend will switch automatically.
5. The machine shall not exceed in 3 minutes of use. Reuse after 1 minute pause and run continuously for 10 cycle only.