

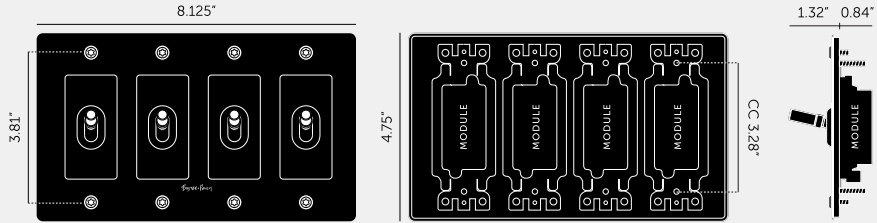
4G TOGGLE SWITCH / CROSS / WITH LOGO

ACTION: TOGGLE SWITCH

RANGE: TOGGLE SWITCH

A solid metal toggle switch with our signature diamond-cut cross knurl toggle to feel amazing with every touch. The switch is finished with a flat plate and our signature solid metal coin caps. Available in five different finishes. You can also team them up with our dimmers, duplex and USB outlets in matching finishes.





SPECIFICATIONS

Our Metal Electricity range has solid stainless steel plates, in our signature white, steel, brass, smoked bronze and black finishes.

Module: NTM-01384 (US-TO-MO-A)

Style: On/ Off Toggle switch

120-277V AC /15 A / 60 HZ

3 way switching (can be controlled from 2 locations)

Certification: cETLus 5005703"

INCLUDED

- 1 x 4G Wall Plate
- 4 x Toggle Module
- 4 x Toggle Detail Kits

FINISH & SKU NUMBERS

sku:	finish:	size:
NTK-024401	● black	4G
NTK-054402	● brass	4G
NTK-094403	● smoked bronze	4G
NTK-074404	● steel	4G
NTK-144405	● white	4G

PLEASE NOTE

DISCLAIMER: Always consult a trade professional when installing this product. Buster + Punch is not responsible for the usage or feasibility of installation requirements. This product is not suitable for damp or wet environments.

CARE INSTRUCTIONS

Wipe with a dry lint free cloth with no loose hairs, avoid using any chemicals. Please note that finishes may age naturally with time and regular use.