



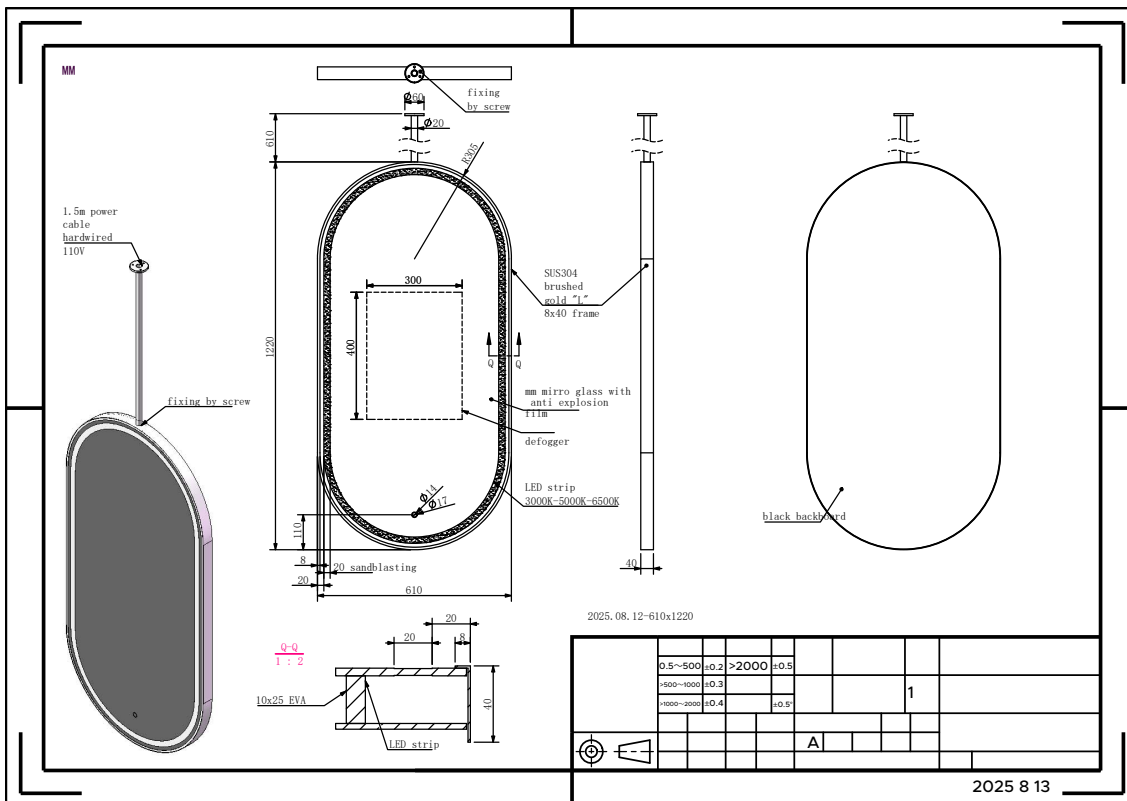
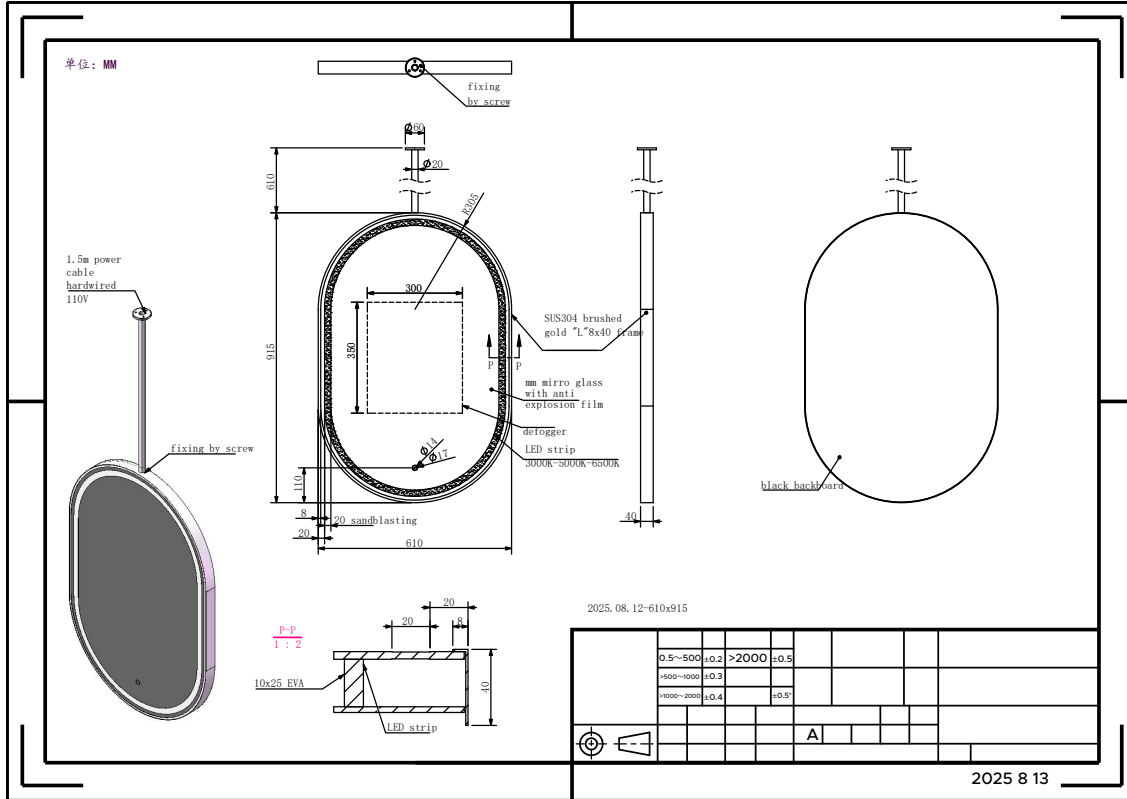
## FEATURES AND BENEFITS

- LED TECHNOLOGY
- Hangs Vertically
- No Need for Wall Switch
- Energy Efficient
- Water and Explosion Proof
- UL Certified
- Durable (Up to 120,000 Hours)
- 5 YEARS WARRANTY



12 DC Box Built-In Control with  
On/Off and Dimmable  
3K-5K-6K Lumen  
Button Switch



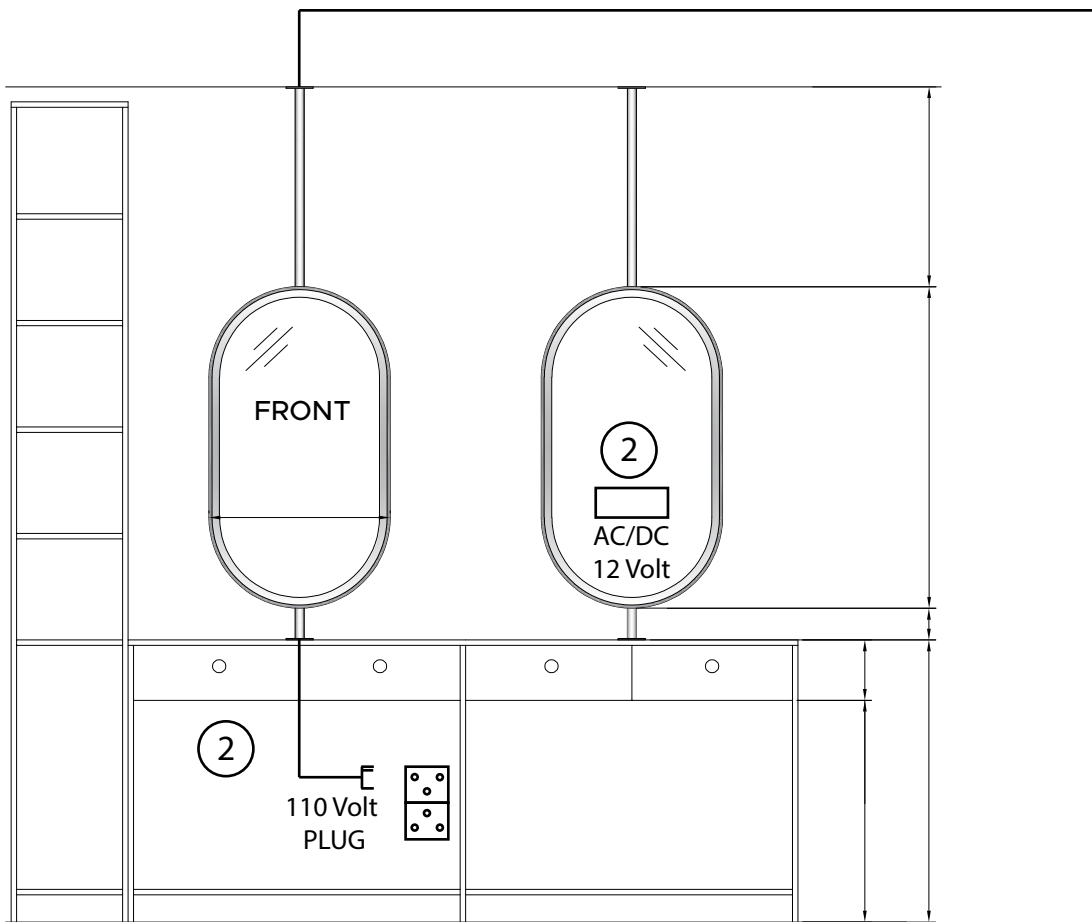


**INSTALLATION MANUAL**

①

110 Volt HARDWIRE

INPUT  
MANUAL  
WRITTEN



FRONT VIEW

1: Ceiling-mounted mirror line wire inside the pole rod; no need for a wall switch because the mirror has its own switch, a dimmable button, and a 12V DC box converter.

2: Option 2 is custom, with a bottom pole rod; the custom option offers either hardwired or plug-in setup, and it is only available on the custom tailor mirror.

## **CEILING HANGING MIRROR**

### **Instruction**

Please read carefully and save these instructions, as you may need them at a later date.

### **SAFETY**

**WARNING:** BE SURE THE ELECTRICITY TO THE WIRES YOU ARE WORKING ON IS SHUT OFF; EITHER THE FUSE IS REMOVED OR THE CIRCUIT BREAKER IS TURNED OFF. TURNING THE POWER OFF USING THE LIGHT SWITCH IS NOT SUFFICIENT TO PREVENT ELECTRICAL SHOCK.

**NOTE**The important safeguards and instructions appearing in this manual are not meant to cover all possible conditions situations that may occur. It must be understood that common sense, caution, and care, are factors which cannot be built into any product. These factors must be supplied by the person(s) installing this unit.

### **READ & SAVE THESE INSTRUCTIONS**

**CAUTION:** Before assembling the lighting fixture, refer to the section titled Wiring Connections. If you feel you do not have enough electrical wiring experience, either refer to a do-it-yourself wiring handbook or have your lighting fixture installed by a qualified, licensed electrician.

## **INSTALLATION & OPERATION INSTRUCTIONS**

### **GENERAL**

Before starting the installation, disconnect the power by turning off the circuit breaker or by removing the appropriate fuse at the fuse box. Turning the power off using the light switch is not sufficient to prevent electrical shock.

All electrical connections must be in accordance with local and National Electrical Code (NEC) standards. If you are unfamiliar with proper electrical wiring connections, obtain the services of a qualified electrician.

Remove the fixture and the mounting packages from the box and make sure that no parts are missing by referencing the illustrations on the installation instructions.

Be sure to read these installation instructions and review the diagrams thoroughly before installation.

## ELECTRICAL CONNECTIONS

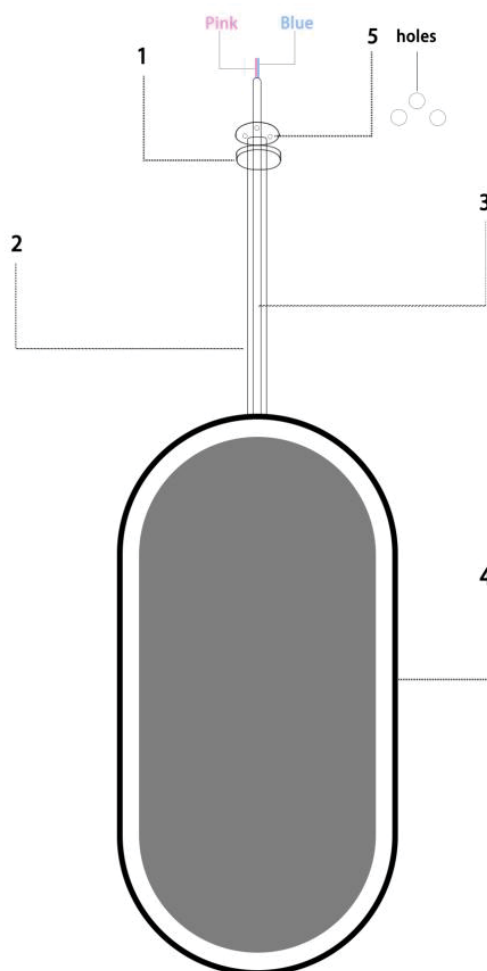
**Required Supply Circuit: 110 V, 60Hz**

**Components:** cap(1),rod(2),cable(3), mirror(4),holes(5)

**Tools:** electric drill, hammer, screwdriver, expansion tube, screws, Glass glue

**step:**

1. Thread the rod(2) into the cap(1)
2. Thread the cables(3) into the rod(2)
3. Connect the rod(2) to the mirror(4) and rotate the rod(2)
4. Align the holes(5) of the rod(2) with the ceiling and mark the position, then use an electric drill to drill holes(5) in the marked position
5. Use a hammer to hammer the expansion tubes into the holes(5) in the ceiling
6. align the holes(5) of the rod(2) with the expansion tubes and use a screwdriver to drive the screws into the expansion tubes.
7. apply glass glue to stick the cap(1) together with(5)



**Tools:**

