



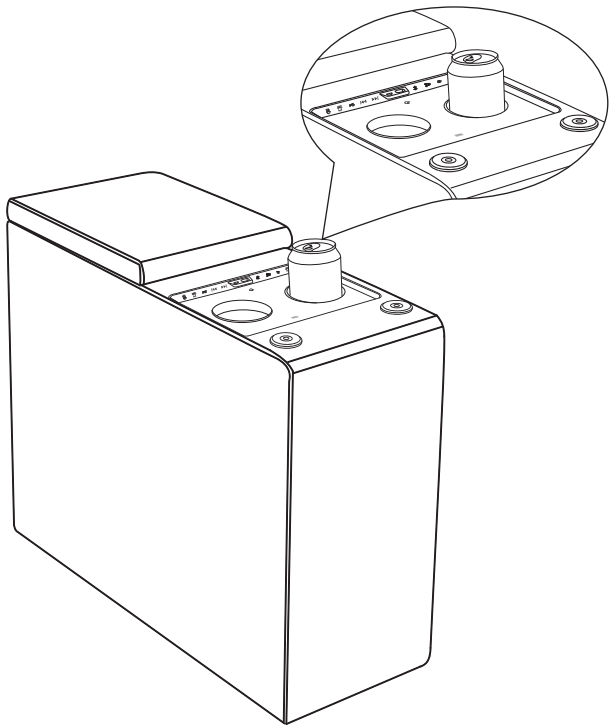


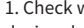
5.5 Cup Holder and Locking Funtion

Short press  to lower the cup holder, you can put a cup or other suitable bottle on it. Press  again will change into wireless charger.


Long press  , the  will will keep lighting blue, all other buttons will be off and cease function.



6. Troubleshooting guide

| Problem  | Solution   |
|--|--|
| Power grommet doesn't work   | 1.Check and make sure the power cables are well connected.   |
| Reading light doesn't work   | 1.Check and make sure the power cables are well connected.<br>2.Make sure you are touching in the right area.  |
| Phone/ipad wireless charger holder doesn't work<br>iTable wireless charging doesn't work | 1. Check and make sure the power cables are well connected.<br>2.Check and make sure the receiver coil center of the mobile phone is aligned with the transmission center.<br>3. Remove the cover from phone and retry.  |
| iTable touchscreen doesn't work  | 1. Check and make sure the power cables are well connected.  |
| iTable cup holder doesn't work   | 1.Check and make sure the power cables are well connected.<br>2. Short press button several times to reorient its position.  |
| iTable Unable to connect Bluetooth   | 1. Check whether connected to another Bluetooth device already. Long press  to disconnect the current Bluetooth connection and try again.<br>2. Please do not connect beyond 8 meters from the product or attempt to connect through obstacles. |

Important Safety Instructions

 **DANGER**

TO REDUCE THE RISK OF ELECTRICSHOCK OR SERIOUS INJURY

- 1 . Disconnect the electrical plug from the wall outlet before cleaning , moving , servicing or when not in use for an extended period of time
- 2 . Do not use this product if it is wet , in water , around water or any liquid.

Warranty

Customer Information

|               |  |     |  |
|---------------|--|-----|--|
| Name          |  | TEL |  |
| Purchase date |  | Add |  |
| Product model |  | UPC |  |

Issues Description: \_\_\_\_\_

\_\_\_\_\_

\_\_\_\_\_

- Warranty Limited
1. One Year limited warranty of the product.
  2. Within 7 days from the date of sale, consumer can choose to repair, replace, or return the product if any structural failure occurs or the fabric cover is damaged under normal use.
  3. Any repairs outside of the warranty period, Consumer shall be liable for the shipping cost, any necessary parts, and any cost associated with the repair itself.
  4. Please retain this warranty card and invoice for proof of purchase when repairing.

- Below issues are not covered by the warranty
1. The product is not used for its intended use, improper handling.
  2. Damage caused by attempted reassembling with others components.
  3. Damage caused by force of nature.
  4. Damage caused by abnormal indoor / outdoor environment such as exposure to rain, sunlight, high heat / temperature, etc.
  5. Product listed on the invoice is not consistent with the product received to be repaired.







 POWERED BY eMoMo

NEED HELP?

For troubleshooting and related questions  
IMPORTANT: This manual should be kept for future reference.  
Please follow the instructions to enjoy a safe and enjoyable experience with Power console.  
For instructions and other language, please visit our website.

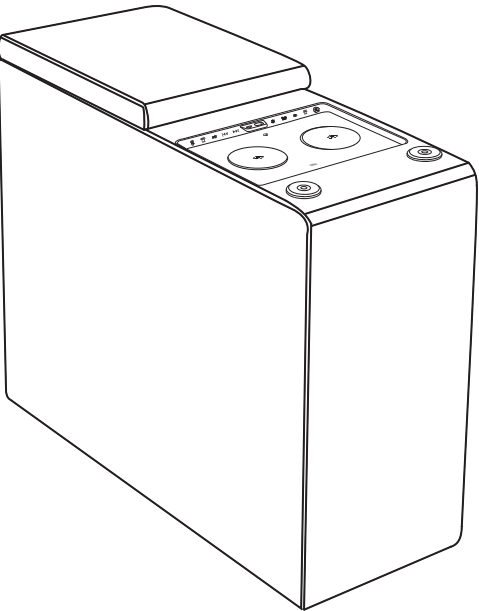
**CALL +800 206 7321**  
**E-mail : [service@beyondsmart.com](mailto:service@beyondsmart.com)  
[customerservice@beyondsmart.com](mailto:customerservice@beyondsmart.com)**  
**Website : [www.beyondsmart.com](http://www.beyondsmart.com)**

BEYOND SMART (HONGKONG) LIMITED

-  @beyondsmartco
-  beyondSMART
-  @beyondsmartco
-  @BeyondSmartTeam
-  Beyond Smart
-  beyondsmart4home



Power Console



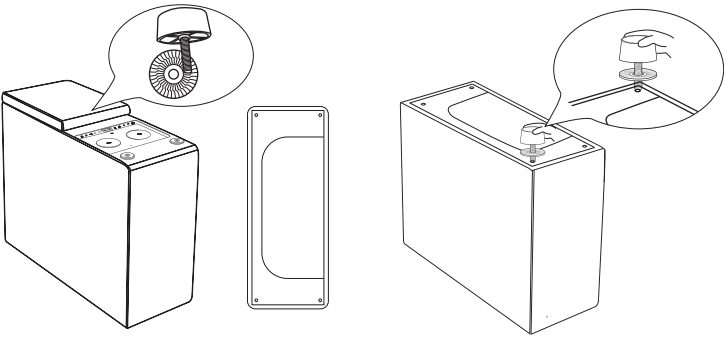
BYS-E016 User Manual

Thanks for purchasing this product!  
Please read the manual completely before assembling and use.



Assembly instruction

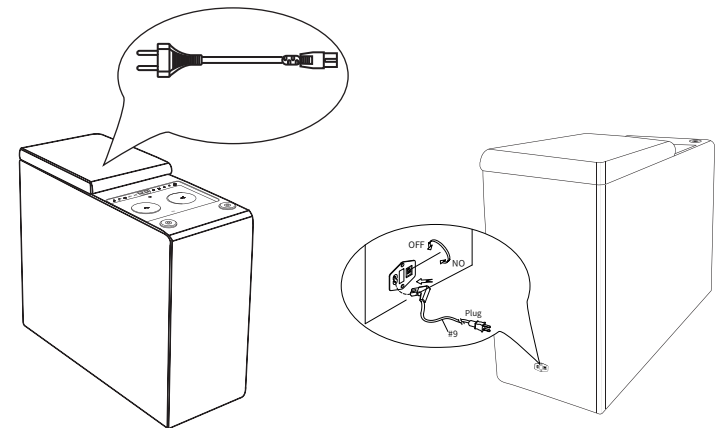
Firstly, install the spacer on the plastic foot, and then screw it in clockwise on the corresponding hole positions underneath .



Operating Instruction

1: Powering your console

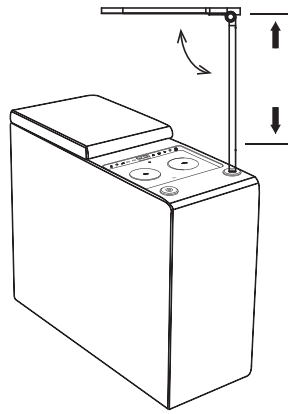
Locate AC power cord inside the storage of your Power Console. Plug AC power cord into the rear of the console. Next, plug AC power cord to the wall socket. Toggle the power switch of the AC socket to the ON position for powering the unit.



2: Powering your LED Reading Light  
Insert the LED light to the Power Grommet

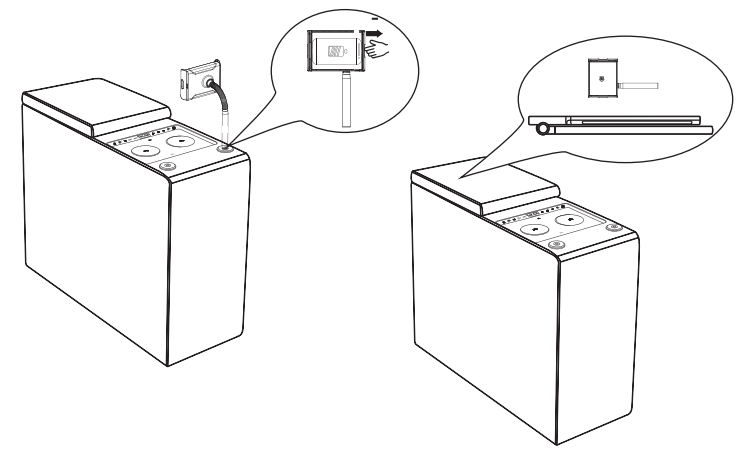
3: Touching area

1st touch , turns light to low brightness  
2nd touch , turns light to high brightness  
3rd touch , will turn light off



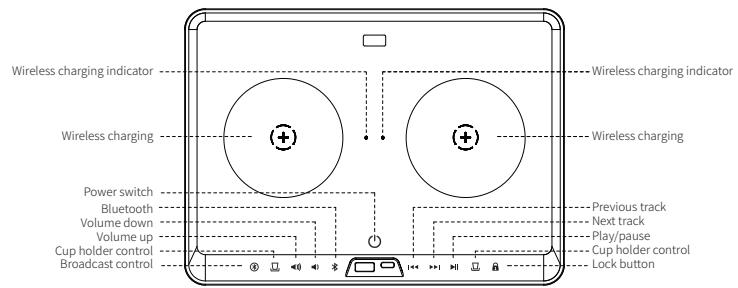
4: Powering your Phone/tablet wireless charger holder

1st pull up on the holder to adjust it to fit the phone  
2nd place the phone into the holder.  
Note: if the phone is not charging properly(remove the cover from phone and retry) Holder will not charge tablets.



5:iTable3 Operating instruction

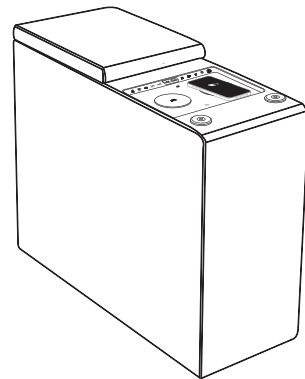
5.1 Button function:



| Button Icon | Button name                                 | Function Description  |
|-------------|---|---|
| ⊕           | Wireless Charging                           | Wireless charging pad   |
| ⏻           | Power Switch                                | Long press to power on/off ; short press changes the color of the light button              |
| 📶           | Bluetooth                                   | Long press to disconnect Bluetooth  |
| 🔊           | Volume Down                                 | Long press to continuously decrease volume; short press to decrease volume step-by-step     |
| 🔊           | Volume Up                                   | Long press to continuously increase volume; short press to increase volume step-by-step     |
| 🍵           | Cup Holder Control                          | Short press to raise/lower  |
| 📶           | Broadcast control<br>Sync Multiple Consoles | Long press to turn off the broadcast function;<br>Short press to turn on broadcast function |
| ⏮           | Previous Track                              | Short press to previous track   |
| ⏭           | Next Track                                  | Short press to next track   |
| ⏸           | Play/Pause                                  | Short press to play/pause   |
| 🔒           | Lock Button                                 | Long press to lock the buttons, turn off button lights and disable touch                    |
| 🔌           | USB-A; USB-C                                | Water resistant USB-A and USB-C ports   |

5.2 Charging Function

Align the wireless charging receiver of the phone with ⊕ and place it flat on surface ⊕ If the blue light next to the wireless charging is on, it indicates that the charging is successful. If there is no response from the device, please move the phone until the receiver is aligned with the ⊕



5.3 Bluetooth Speaker Function

①Long press the ⏻ ,the Bluetooth indicator flashes blue, and the voice prompt :“Power on, wait for paring”. The product enters the mode of attempting to pair with Bluetooth devices. Other buttons light up in white color.Short press the ⏻ , and all button lights change colors in a cycle of white, green, and red. Long press the ⏻ again to turn off, and the voice prompt :“Power off.”  
②Turn on Bluetooth on your phone/device, search for the Bluetooth name: iTable3, and proceed to pair your device. After successful pairing, the Bluetooth indicator will maintain a solid blue light, and the voice prompt :“Bluetooth connected.”  
③Open the music/audio on your phone/device and play it. At this time, you can control the speaker's volume up/down, previous/ next track, play/pause, disconnect Bluetooth, activate broadcast function, and other audio controls on the iTable3 control pannel.

5.4 Broadcast Function / sync Multiple Consoles

① Short press 📶 to activate the the broadcast/sync function. The button will blink a blue light and a voice prompt: "Enter Broadcast mode". After blinking for 30 seconds, press 📶 again and the indicator will keep lighting blue, indicating that the host(main) console is in pairing mode to pair with another power console.  
②Long press ⏻ on the receiver of the secondary console to turn it on and then short press 📶 on the receiver of the secondary console. A voice prompt: "Broadcast connected " and the main console and secondary console will be paired. When the pairing is successful, the 📶 on the secondary console indicator will keep lighting blue, At this time, the main console and the secondary console will play music synchronously.  
③Long press 📶 to deactivate the broadcast/sync function. A voice prompt:“Exit broadcast mode.”  
Note:

After activating the broadcast/sync function, the previous track ⏮ and next track ⏭ buttons on the secondary console will not work because they are being controlled by the main console. The play/pause button ⏸ works as mute funtion for the secondary console when paired. Other buttons only control the secondary console itself and have no effect on the main console.The main console can control the previous track, next track, play/pause of both the main console and the secondary simultaneously.