

INSTRUCTIONS

CARTON A PART LIST

A Left Armrest



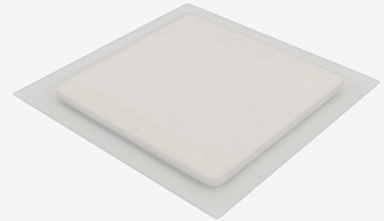
x1

B Right Armrest



x1

C Single Seat Cushion



x2

1 Plastic Cylindrical Leg



Tip: Armrest and Folding Bed Frame

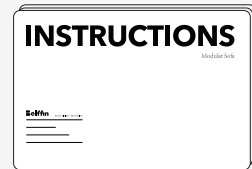
x4

2 Plastic Washer



x4

3 Assembly Instructions



x1

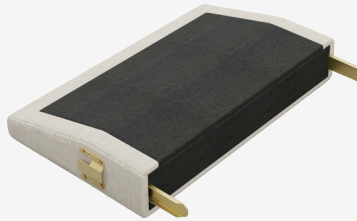
CARTON B PART LIST

D Single Storage Seat Frame



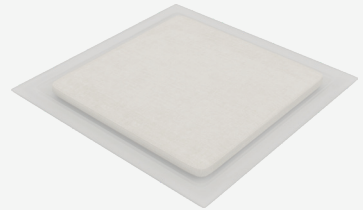
x1

E Single Back Frame



x1

F Single Seat Cushion



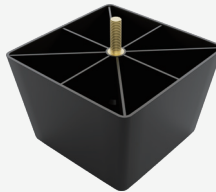
x1

G Pillow



x1

4 Plastic Square Leg



x4

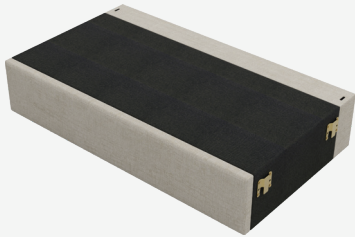
2 Plastic Washer



x4

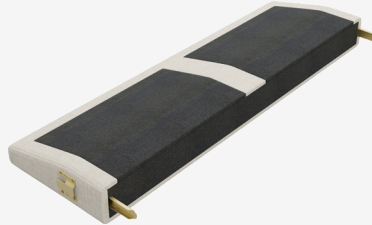
CARTON C PART LIST

H Double Seat Frame



x1

I Double Back Frame



x1

F Single Seat Cushion



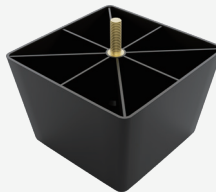
x2

G Pillow



x2

4 Plastic Square Leg



x4

2 Plastic Washer



x4

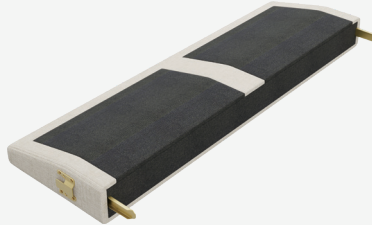
CARTON D PART LIST

J Folding Bed Frame



x1

K Double Back Frame



x1

L Mattress



x1

G Pillow



x2

1 Plastic Cylindrical Leg



Tip:For Armrest and Folding Bed Frame **x4**

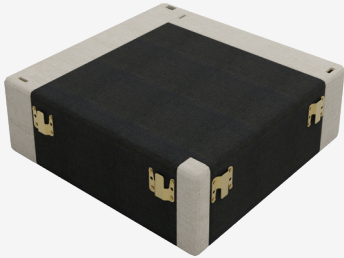
2 Plastic Washer



x4

CARTON E PART LIST

M Corner Seat Frame



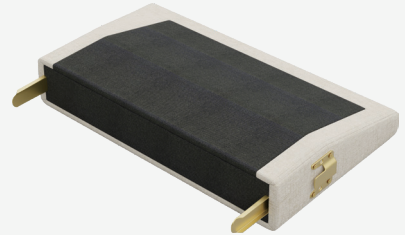
x1

N Corner Long Back Frame



x1

O Corner Short Back Frame



x1

P Corner Right Pillow



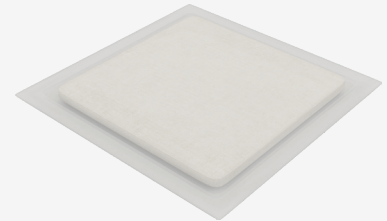
x1

Q Corner Left Pillow



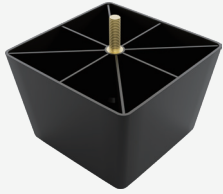
x1

R Corner Seat Cushion



x1

4 Plastic Square Leg



x4

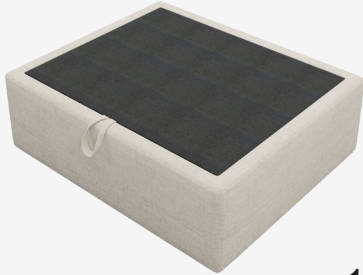
2 Plastic Washer



x4

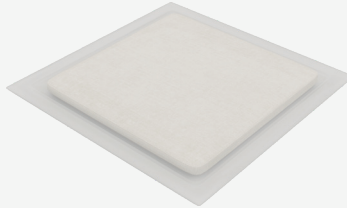
CARTON F PART LIST

S Ottoman



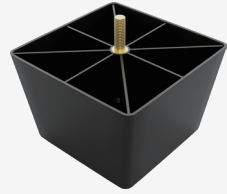
x1

T Ottoman Seat Cushion



x1

4 Plastic Square Leg



x4

2 Plastic Washer



x4

5 Single Seat Fittings



x2

Notice:

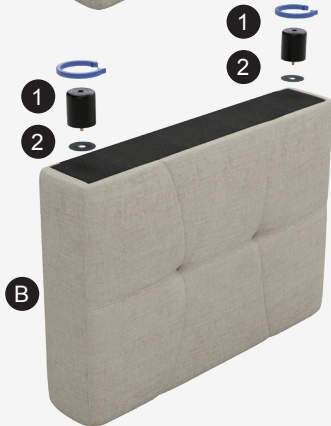
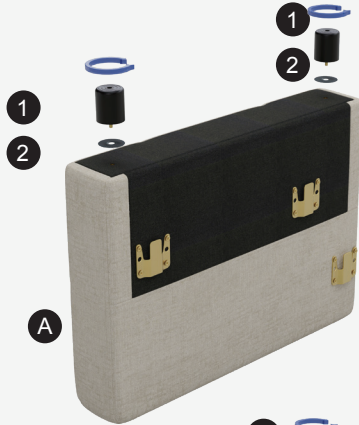
Modular sofas consist of several modules as described above, but not all types are included in every sofa set.

You can extend your sofa at any time by ordering new modules.

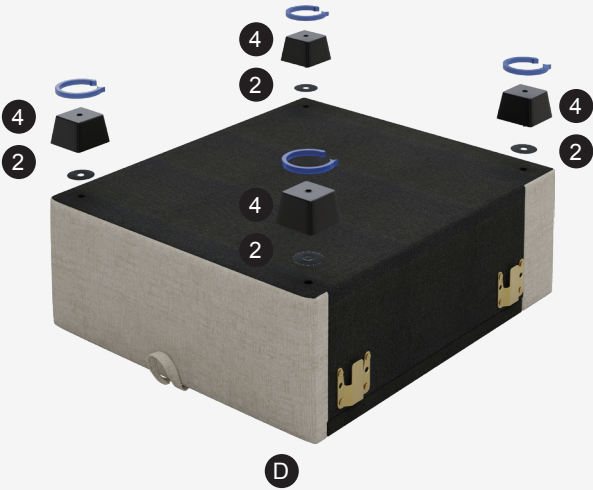
Please note the following points when assembling your sofa:

- ① Screw all the legs of the sofa tightly before starting to connect these modules
- ② Put these modules together should be done in right-to-left order
- ③ Connect the Right Amrest and all Seat Frame first, then the Backrest and Left Armrest

Step1:



Step2:



Step3:



H

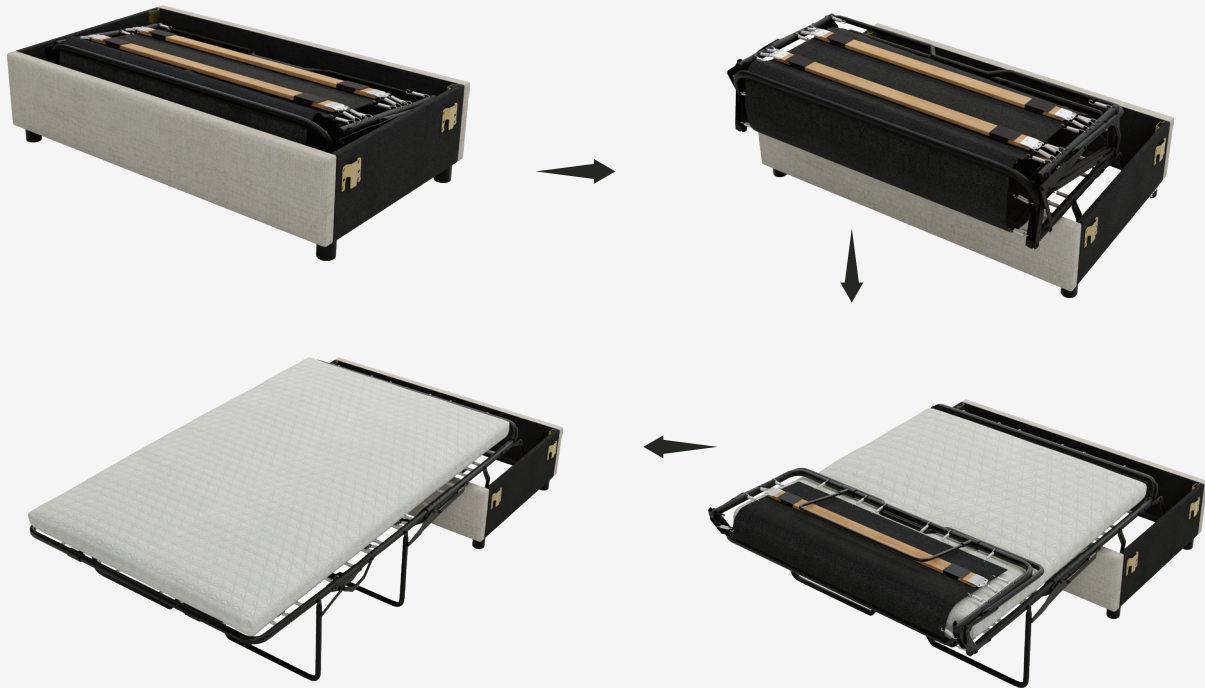


H

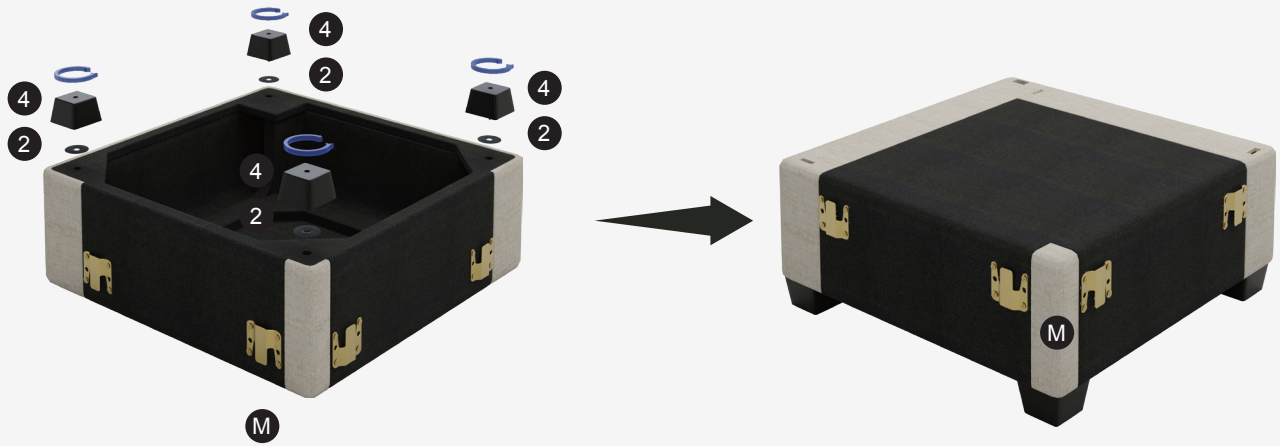
Step4:



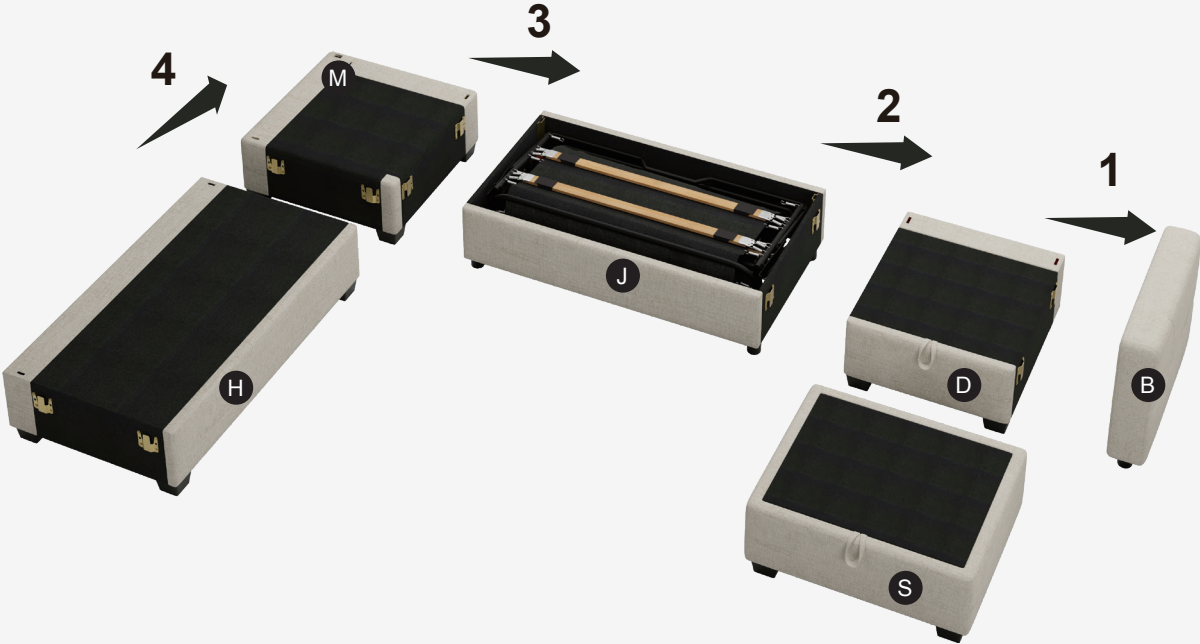
Step5:



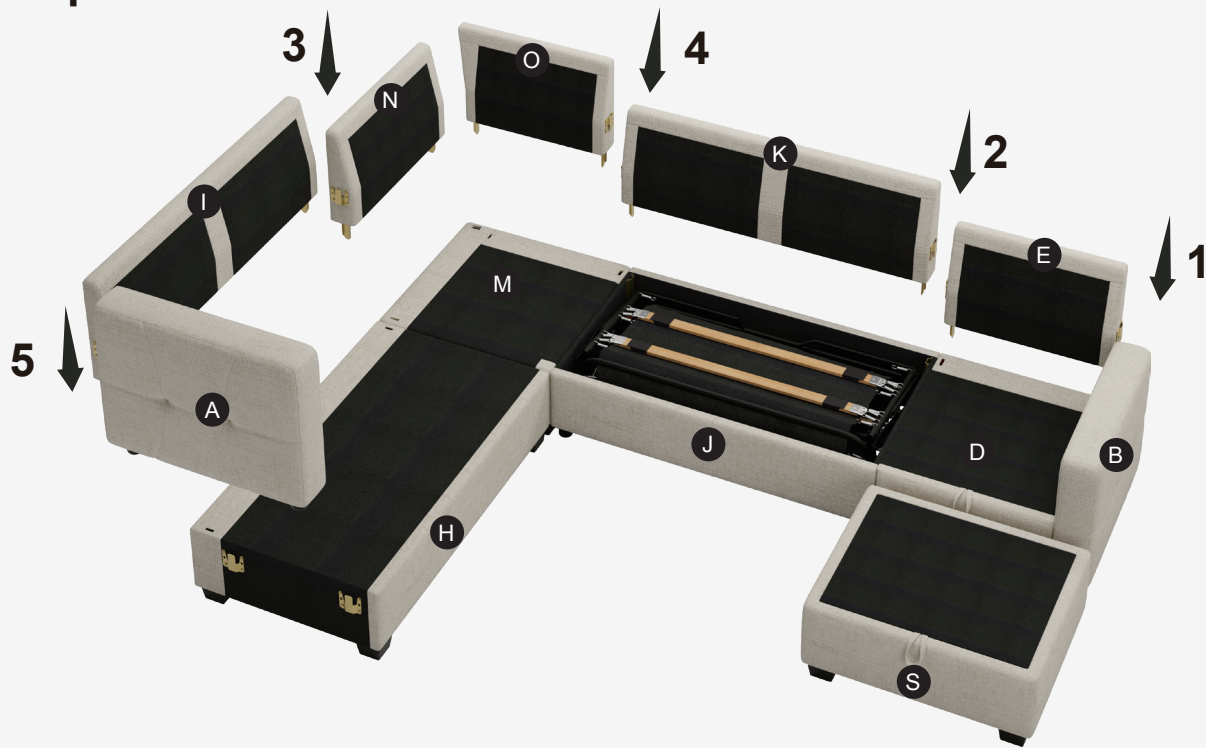
Step6:



Step7:



Step8:



Step9:



Step10:



Step11:

