

USER'S MANUAL **Folding Canopy Tent**

THIS INSTRUCTION BOOKLET CONTAINS **IMPORTANT** SAFETY INFORMATION. PLEASE READ AND KEEP FOR FUTURE REFERENCE.

Please give us a chance to make it right and do better!

Contact our friendly customer service department for help first.

Replacements for missing or damaged parts will be shipped ASAP!

Contact Us!

Do NOT return this item.

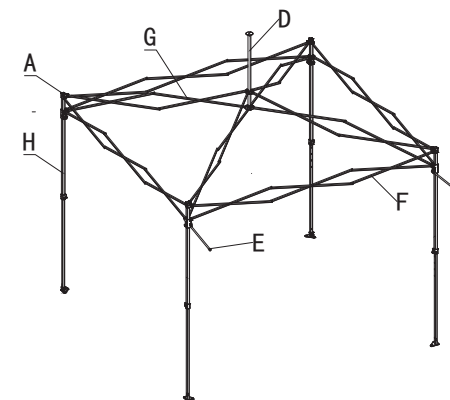
Contact our friendly customer service department for help first.

Before You Start

- ⚠ Please read all instructions carefully.
- ⚠ Retain instructions for future reference.
- ⚠ Separate and count all parts and hardware.
- ⚠ Read through each step carefully and follow the proper order.
- ⚠ We recommend that, where possible, all items are assembled near to the area in which they will be placed in use, to avoid moving the product unnecessarily once assembled.
- ⚠ Always place the product on a flat, steady and stable surface.
- ⚠ Keep all small parts and packaging materials for this product away from babies and children as they potentially pose a serious choking hazard.

Replacement

Part	Description
A	Top Cap
B	Fabric Top
C	Awning Top
D	Center Pole
E	Awning Poles
F	Eave Assembly
G	Ceiling Assembly
H	Leg Assembly
I	Wheeled Storage Bag
J	Stake
K	Guy Rope



IMPORTANT:

Carefully read and follow the instructions provided with this product.

WARNING:

Keep all flame and heat sources away from this canopy top and sidewall fabric. This canopy top is made with flame resistant fabric which meets CPAI-84 specification. It is NOT FIRE PROOF. The fabric will burn if left in continuous contact with any flame source. The application of any foreign substance to this fabric may render the flame resistant properties ineffective.

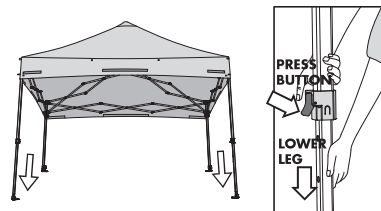
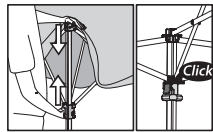
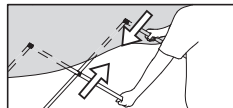
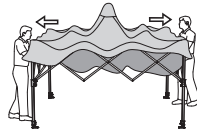
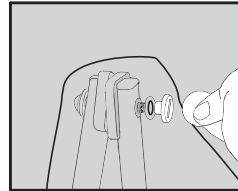
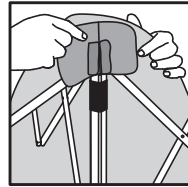
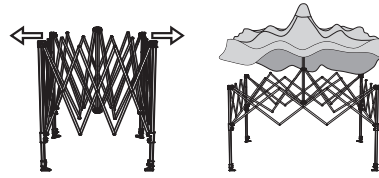
WARNING:

Do not set-up or leave the canopy unattended in the following conditions: gusty wind, rain, hail, sleet, snow, drizzle, or any other harsh weather conditions. Doing so may cause damage to the entire canopy and will void the warranty.

Set Up The Canopy

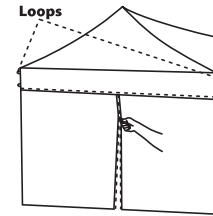
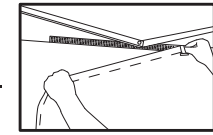
1. Expand frame to arm's length.
Drape the top over the frame.
2. Attach the four corners by matching up the hook & loop fabric on the top with each corresponding leg.
3. Remove T-nuts, feed the grommet hoops over each bolt, and reattach T-nuts. Use a coin to tighten.
4. With a partner, slightly raise frame off the ground and open as wide as arm's length.
5. Grasp one set of upper and lower eaves, walk back while squeezing together. Expand frame as wide as possible.
6. On each corner, engage the slider by lifting up the slider while holding down on the top of the leg. The slider will automatically lock when it reaches the hole in the upper leg.
7. Starting on one side, extend the inner leg until it locks in place. Repeat on the other side. Extend each leg until the desired height is reached.

TIP: Extend legs in two steps:
1) Press release button,
2) Pull leg down.



ATTACHING FRONT WALL

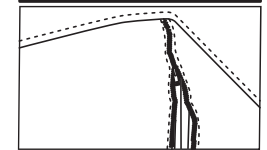
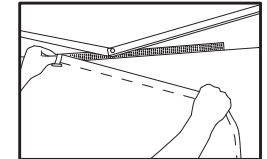
- Identify the canopy top with the two eyelets.
Attach the front wall panel to the canopy top by fastening the hook and loop fabric strips.
Secure the front wall panel to the adjacent frame legs using the hook and loop fabric strips.
Ensure the zipper is situated at the center of the the frame.



TIP: The front of the canopy top has hook & loop strips on the interior and exterior sides. Use interior hook & loop attachment points for the wall. Use exterior hook & loop attachment point for awning.

SIDE WALLS

- Place the side walls along the sides and back of the commercial shelter. Zipper sides of each wall indicate the left and right of the wall. Orient each wall with the toggles on the inside.
Attach each wall to the shelter top by securing the hook and loop fabric at the top of the wall panel.
Use the hook and loop fabric strips to attach the walls to its adjacent legs.
Insert the sidewall hooks to the frame.



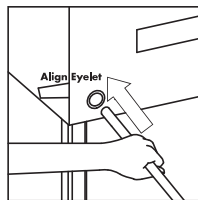
ENCLOSING THE SHELTER

- Fully or partially enclosing the shelter is easy, simply zip together adjacent walls at the corner of the shelter on the outside of the legs.

ACCESSORY SETUP

ATTACHING AWNING POLES

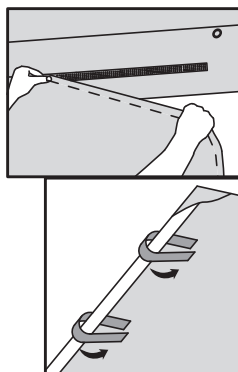
Adjust canopy fabric to align eyelets with the hole on the leg slider if necessary. Insert each awning pole thru the eyelet and into the hole on the slider.



ATTACHING AWNING

The awning attaches to the shelter top using hook and loop strips sewn along the edge of each part.

Insert the tip of the awning poles into the pocket formed at the corner of the awning fabric on both sides. Wrap hook and loop fabric strips around the poles.



SET STAKES

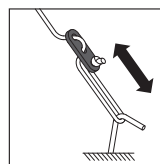
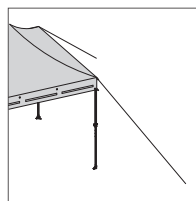
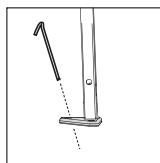
Anchor each leg with a stake by inserting the stake through the hole at the foot of each canopy leg.

STRING GUY ROPE

Tie each guy rope to an upper loop at each corner of the canopy top. Extend the rope and anchor them to the ground with the included stakes. The guy rope should make a 45° angle with the ground and the canopy. The stake should anchor with the majority of the stake buried in the ground. Use the diagrams below to ensure that the guy ropes are tight. Tighten guy ropes with the slider included at the end of the rope.

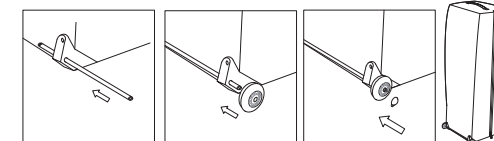
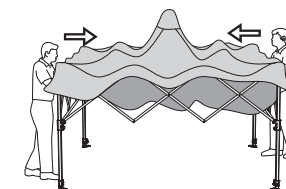
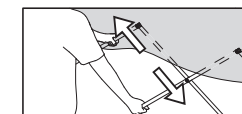
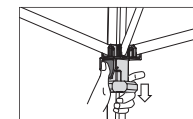
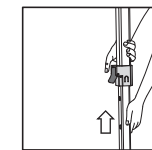
IMPORTANT

It is highly advised the canopy be fully secured with all 8 stakes and guy ropes to avoid wind damage.



Take Down The Canopy

1. Remove any attached sidewalls, awning or name banner. Then lower all four legs by depressing the lever.
2. Release all four sliders by depressing in lever.
3. With partner on opposite side, grasp top and bottom area of eaves. Lift the canopy up slightly and shake it while stepping towards your partner until the unit is 3/4 closed. Be careful not to pinch your fingers!
4. With each partner grasping two outer legs, push frame together to fully close it. Be careful not to pinch your fingers. Store canopy in Cover and Go bag. NOTE: Do not pinch the fabric top in the frame while folding down.
5. Insert the iron core to the plastic holes, then put the wheels on the iron core, then put the plastic cap on the wheels.



6. Place the frame into the storage bag slowly until gazebo fits comfortably. Zip the storage bag completely shut. Be sure the gazebo is completely dry before storage.



7. Wheel your gazebo to your desired storage area.

