

Professional manufacturer

# **Electric Griddle**

**EG series**

**Instructions**

Welcome you to buy our products and we all staff really appreciate you. Our factory mainly produces Western Kitchen Equipment, such as Barbecue series, baking series, Barbecue series, heat preservation series, and snacked series and so on.

Before using the machine, please read the instructions carefully to make sure for using it correctly.

## **Warn:**

1. This product must be connected to the ground in safely before use.
2. Don't use the spray pipe to clean it.

EG Electric Griddle series are made by absorbing advantages from foreign products. It owns a new style, a reasonable construction and convenient operation. So, it can save electricity and make temperature even. So it is suitable for hotels, supermarkets, and other public and so on.

## **1. Basic parameters**

Model	Size (mm)	Voltage (V)	power (kW)	Packing size (mm)	Control switch
EG-818	550*450*230	110V/60HZ	3	650*550*330	1 set
EG -820	730*500*230	110V/60HZ	4.4	830*600*330	2 sets

## **2. Transportation and Safekeeping**

During the transportation process, this product, which is made of glass, should be handled carefully in order to prevent violent vibration. Generally, the packed product shouldn't be long-term to deposit on the open-air, and you should put it at a storehouse where is well ventilated and has no corrosive air. Not set upside down. If you need to deposit it at the time, you should take measures to defend the rain.

## **3. The Regulations on Installation and The Usage Environment**

① This product should be put in a steady place, and the distance of its two sides should be more than 10 cm to non-combustible thing, The back should leave more than 20cm of non-combustible thing(for example: the brick wall etc.).

② The voltage of power supply on this equipment must agree with the voltage of power supply on the product card.

③ The customer need to set power switch, machine of melting break and the machine of electric leakage protection in the equipment nearby. The front of switch forbids heaping sundries for convenient operation.

④ This equipment must connect the ground line safely before use.

⑤ Before switch it on, you should check whether the conjunction of each electric component is firm or

not, and the safety connect ground whether is credible.

⑥ Replace the power cable should choose to the same model electric cable, and ask professional person to replace.

⑦ During the electric connection of this product on installation and maintain, you should please ask the person who have a certificate on electrician operation to install.

## **4. Operation method**

1. The temperature controllers are set on the front of the product to control the temperature in order to ensure temperature demanded.

2. Connect the power supply, turn the power on, then the green indicating light of the switch power supply will be bright, and revolve the temperature controller clockwise to adjust the temperature value aiming at the needed temperature position. And then the yellow heating indicator is bright at this time. The electric current has already provided to the stove, and the heating resistance begins to heat. When the temperature get to the temperature needed, the temperature controller cut off the power supply automatically. At the same time, the yellow indicator goes off, and stops to heat. When the temperature slightly descends, then the temperature controller can connect the power supply automatically and the yellow indicator will be bright again, and the machine heats up again and the temperature begins to rise. Thus do it again and again to ensure the temperature within the scope of setting.

3. Please clean the oil up from oil box in case of overflow.

4. If it appears excrescent phenomenon in use process, you must stop it immediately. After it was checked and the fault has removed, you can continue to use.

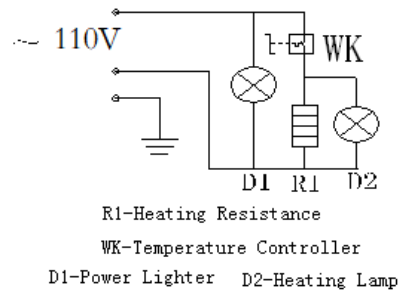
## **5. Sweep and Maintain**

① Before sweeping and maintaining, please cut off the power supply in order to prevent the accident.

② Use the wet towel which has no Corrosive cleanser to clean its surface and the power supply derivation line surface after the task has been completed everyday. Forbid to use the water to wash it directly in order to prevent to damage its electricity function.

③ During the sweeping , remove the water in the top and bottom template in time, in order to prevent to overflow.

## **6. Electricity Principle Diagram**



**7. Accessories:** a basin, a piece of instruction and eligible certificate.

**8. Guarantee clause: The product will be maintained for life.**

(1) The term of validity for “three guarantee” is: Six months

(2) The acknowledgement on the term of validity for “three guarantee”: calculating it from the day of sale, deduct the day of delay ,which results from the repair or without accessories .If the last day of the term of validity is a legal holiday, take the next day of the holiday as the last day of the term of validity.

(3) Belong to one of the following circumstances, practice reasonable charge for repair:

A, More than the term of validity

B, Have no voucher and note of the term of validity, except those who can prove in the day of the term of validity.

C, The content of the voucher do not tally with the product sign or it has been altered.

D, Not use the product according to the instruction of usage and maintenance, which result in the damage

E, The damage from the force majeure.

F, The parts that are the substitutes of maintain all belong to my factory.

G, About the product fault, my plant will not compensate for other obligation which is out of the guarantee.

(The modification of the instructions, please forgive not to notice.)