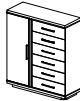
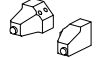

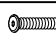



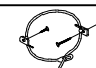


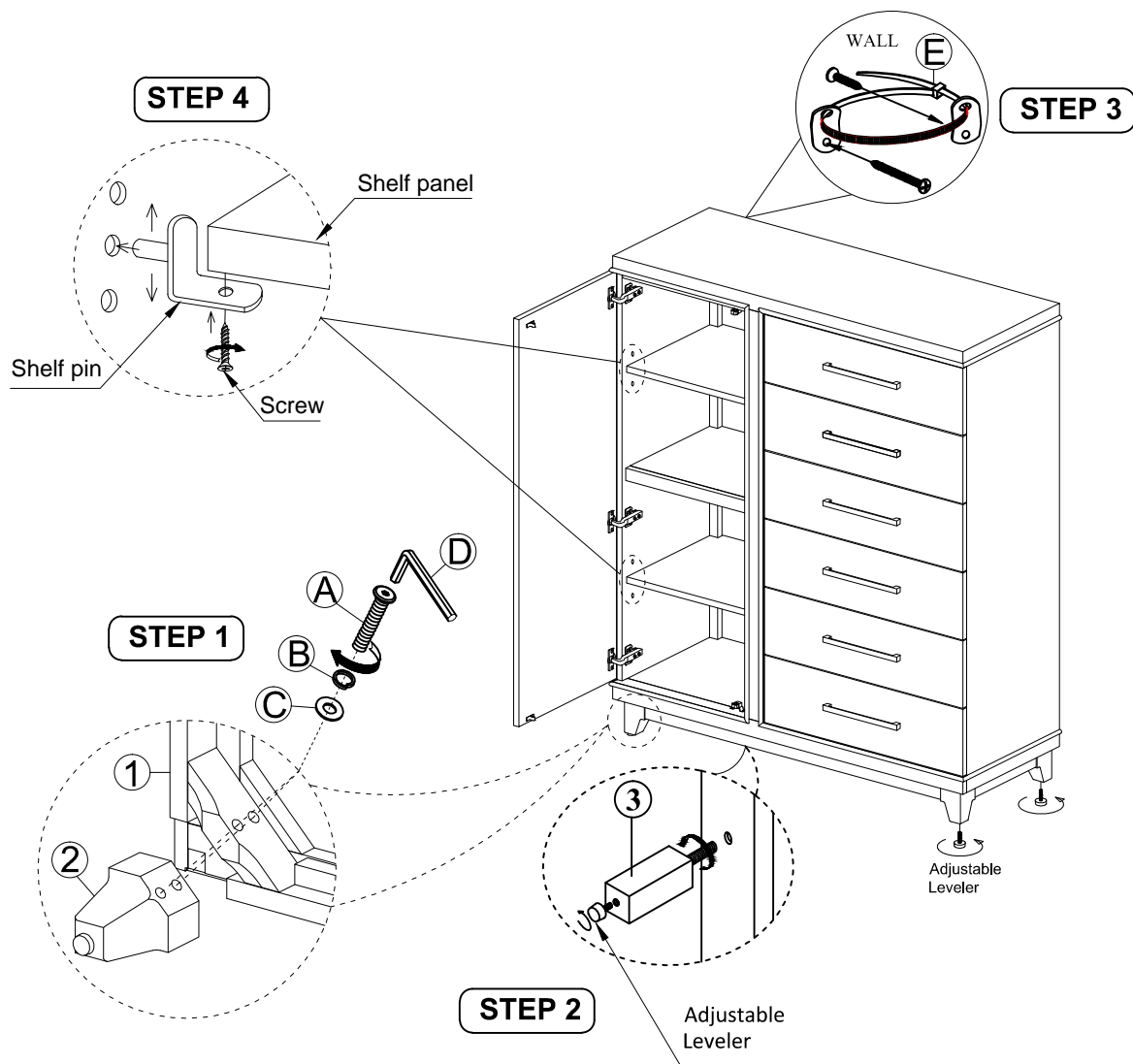
# ASSEMBLY INSTRUCTION

## DESCRIPTION : DOOR CHEST

Thank you for purchasing this quality product. Be sure to check all packing material carefully for small Hardware which may have come loose inside the carton during shipment. Identify and count all Hardware and compare with the Hardware List Below.

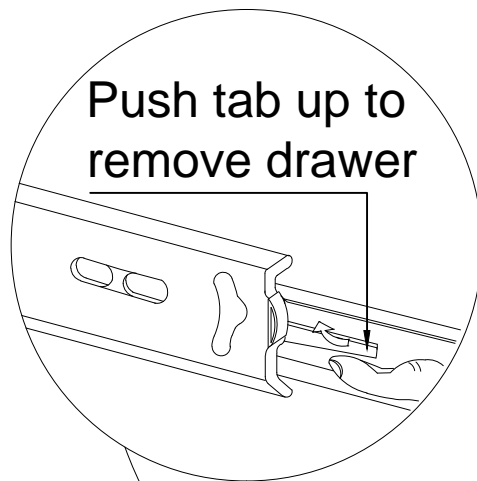
Parts List			
No.	Description		Qty.
①	Door Chest		1 Pc
②	Leg		4 Pcs
③	Center Support Leg		1 Pc

Assembly Hardware Pack			
④			
No.	Description	Hardware	Qty.
(A)	JCBC Screw Ø5/16" x 57mm		8 Pcs
(B)	Spring Washer Ø5/16"		8 Pcs
(C)	Flat Washer Ø5/16" x 19mm		8 Pcs
(D)	Allen Key M4		1 Pc
(E)	Tipping Restraint		1 Set



## ASSEMBLY INSTRUCTION

### DRAWER REMOVAL GUIDANCE



To remove drawer, simultaneously pull  
tab up on one side and push down on  
the other and remove drawer.

