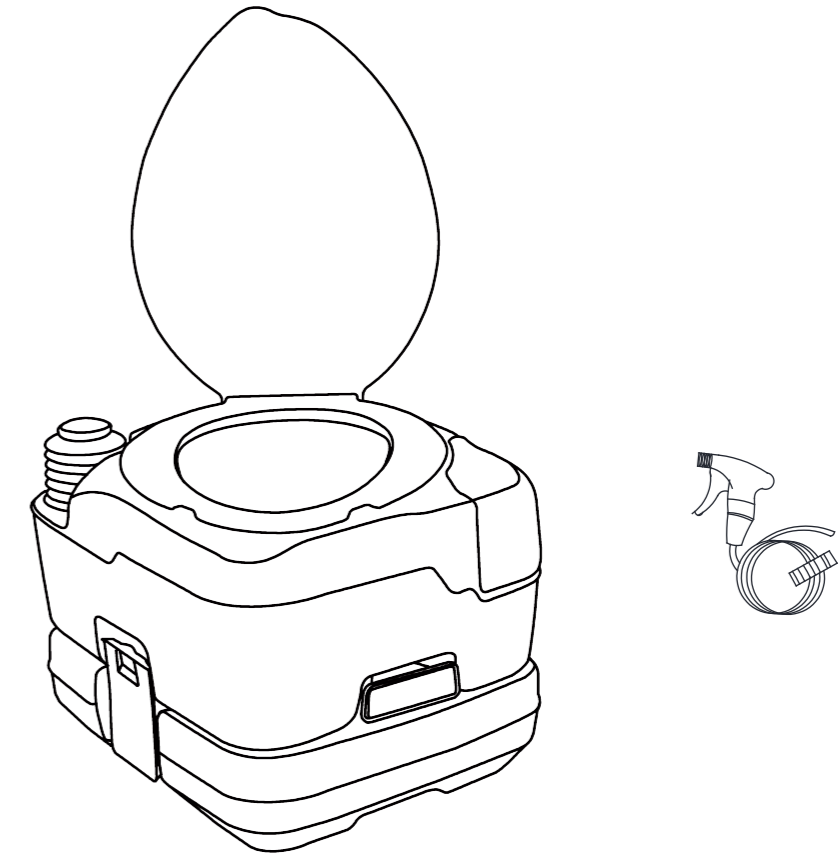


PORTABLE UPGRADED TOILET

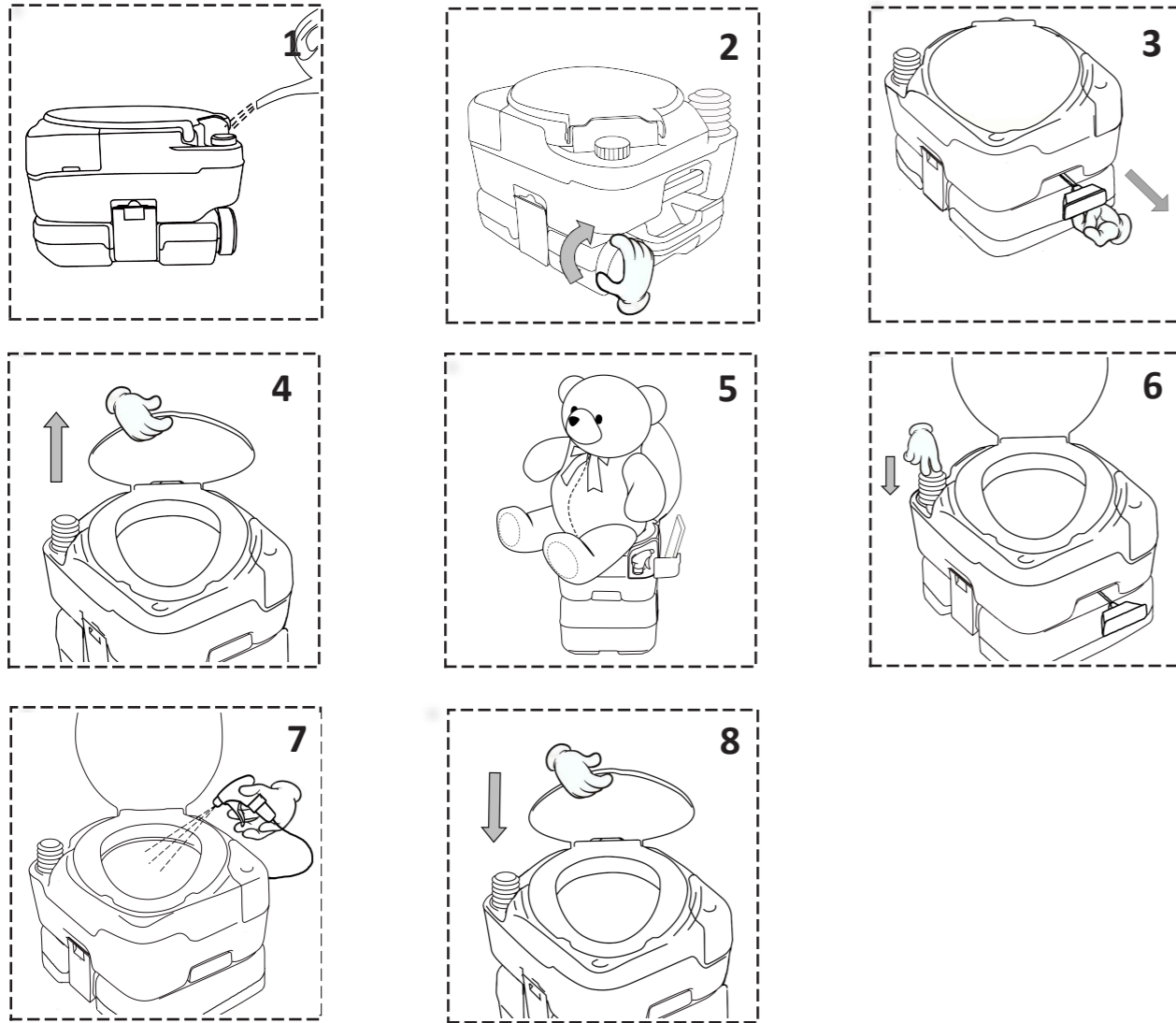


Caution:

- Place on a flat surface.
- Ensure all latches are locked.
- Ensure the waste holding tank is assembled correctly and the cap is screwed on correctly.
- Weight bearing limit is no more than 200 kg.
- Do not lean on the seat cover during operation.
- Do not use water with a temperature higher than 40 degrees.

ASSEMBLY INSTRUCTIONS

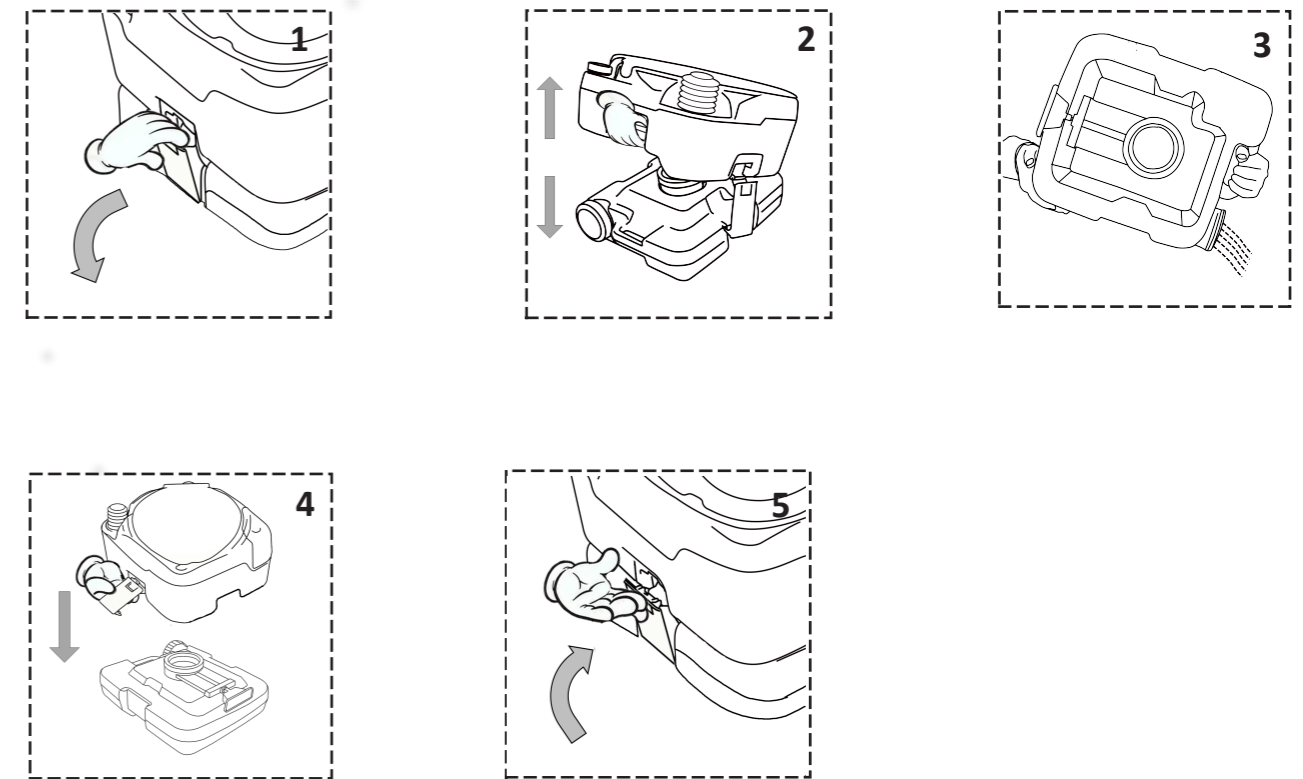
Using Instructions:



- 1.Fill the tank with freshwater.
2. Ensure the waste holding tank is assembled correctly and the cap is screwed on correctly.
- 3.Open the slide valve.
- 4.Open the seat cover.
- 5.Use the toilet.
- 6.Pull the piston flush pump first and press it to flush.
- 7.Use the handheld sprayer clean the dead corner.
- 8.Close the slide valve.

ASSEMBLY INSTRUCTIONS

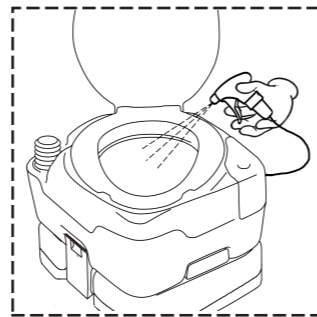
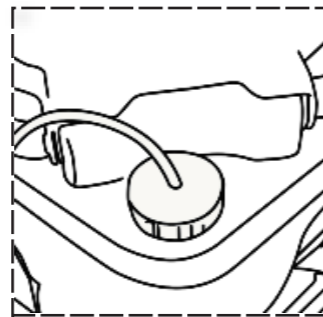
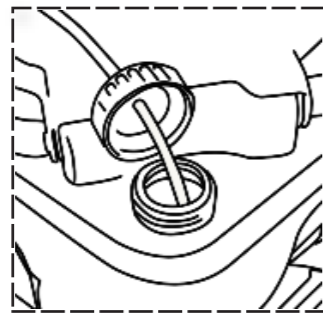
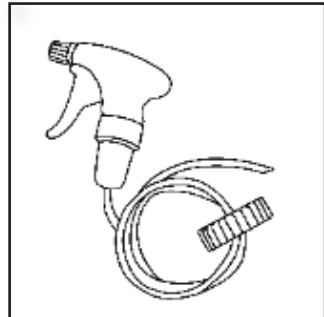
Cleaning Instructions:



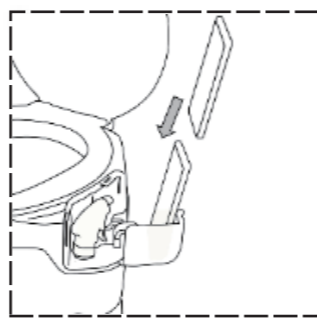
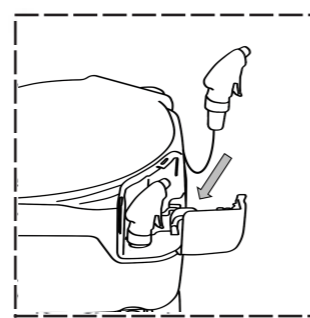
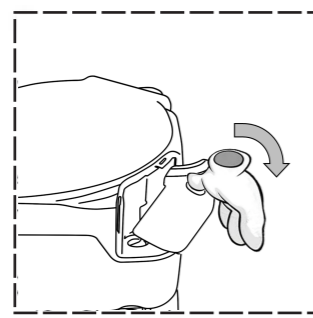
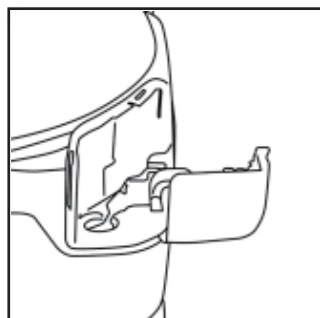
- 1.Open the latch.
- 2.Move away the freshwater tank.
- 3.Empty the waste holding tank.
- 4.Replace the fresh tank.
- 5.Close the latch.

Accessories:

1. Handheld Sprayer



2. Sprayer Storage & Phone Holder



Maintenance and Storage:

1. Clean the tanks regularly in order to achieve long term storage.
2. Lubricate the slide valve periodically with lubricants (Vaseline recommended).
3. Release the waste holding tank cap for long term storage.
4. Avoid strong sunlight and high temperature.
5. If the piston pump is hard to pull up, pull it out and add lubricants to the inside rings or open the fresh water tank cap to maintain pressure balance before use.