

Overall Height:	39.8"
Overall Width:	26.4"
Overall Depth:	29.9"
Seat Height:	18.8"
Arm Height:	25.9"
Seat Depth:	18.9"
Seat Width:	19.9"
Unit Weight:	17.0 lbs

Java All-Weather Wicker Folding Chair

Product Specifications

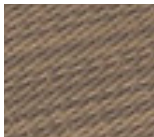
Product Description	Reference Number	Color	UPC Code 014306	Pack Weight Each (lbs.)	Master Pack	Master Pack Volume (cu. ft)
Java All-Weather Wicker Folding Chair	UT071037	Bronze	946566	23.00	2	4.05
	UT071181	French Taupe	946559	23.00	2	4.05

Features & Benefits Warranty: 3 Yrs.

- Rated to 300 lbs.
- Meets ASTM B performance standards for commercial use.
- Specifically designed to provide comfort and ease of utilization and storage in hospitality environments.
- High strength resin wicker frame, specifically woven to perform in commercial outdoor environments.
- Viro® branded fiber highly flexible for comfort and resistant to color fading, cracking, peeling & breaking.
- Color coordinates with Grosfillex® Java All Weather Wicker chaise.
- Hard wearing footpads for extra wear resistance on hard deck surfaces.
- Folds flat for easy storage.
- Easy to clean - simply powerwash!
- A locking device secures the seat of the chair into position for safe use.



Bronze



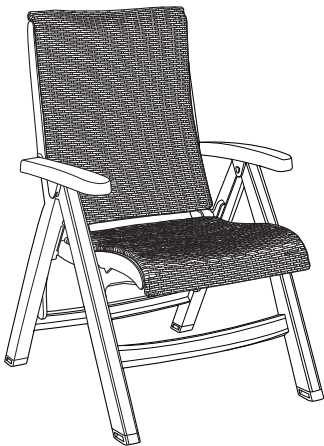
French Taupe



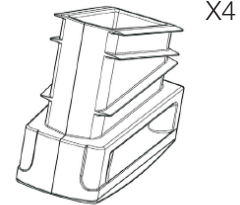
Java Folding Sling Chair

Spare Parts

Replacement Sling Hardware Kit USSP0326



Footpads USSP0291 & USSP0292



Reference	Description
USSP0291	FOOTPADS SET JB BLACK
USSP0292	FOOTPADS SET JB WHITE
USSP0326	REPL SLING HDW KIT JAVA/JB FLD