

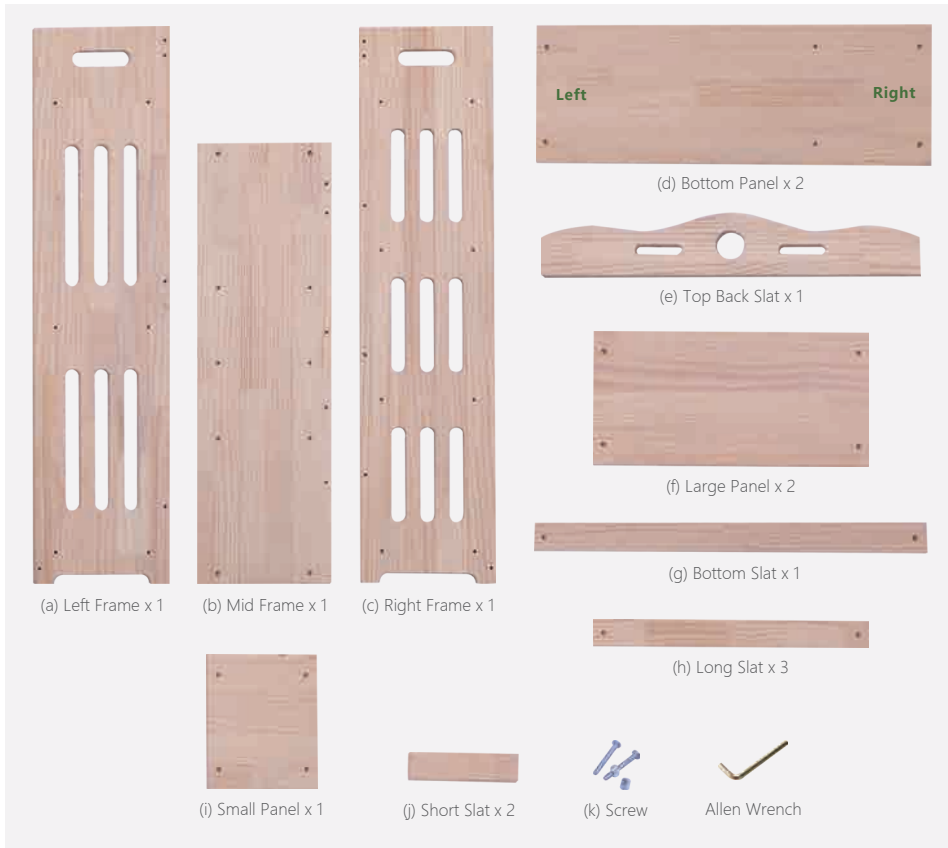
USER GUIDE

BOOKSHELF

Natural / Stylish / Unique



HARDWARE



⚠ ATTENTION

- ① Please always read and follow the assembly, maintenance and operating instruction.
- ② Do not discard any of the packaging until you have checked that you have all the parts and pack of fittings.
- ③ Keep children away during assembly. This item contains small parts which can be swallowed by children.
- ④ Wipe frames with water gently, do not use bleach, acid, or other solvents.
- ⑤ Check all hardware before assembly. Incorrect parts used may lead to damage.



Scan the QR code to view the assembly video.

ASSEMBLY INSTRUCTIONS



- ① Position Frame (a) and Bottom Slat (g) as picture shown. Secure with Screws (k).



- ② Position and secure Bottom Panel (d), on Frame (a) with Screws (k).



- ③ Secure Large Panels (f) with Screws (k).



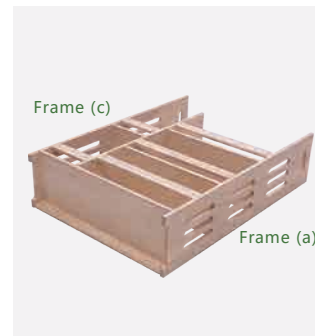
- ④ Secure Long Slats (h) with Screws (k).



- ⑤ Install Frame (b) with Screws (k).



- ⑥ Secure Short Slats (j) and Small Panels (i) with Screws (k).



- ⑦ Install Frame (c) with Screws (k).



- ⑧ Install Bottom Panel (d) with Screws (k).



- ⑨ Secure Top Back Slat (e) with Screw (k).