

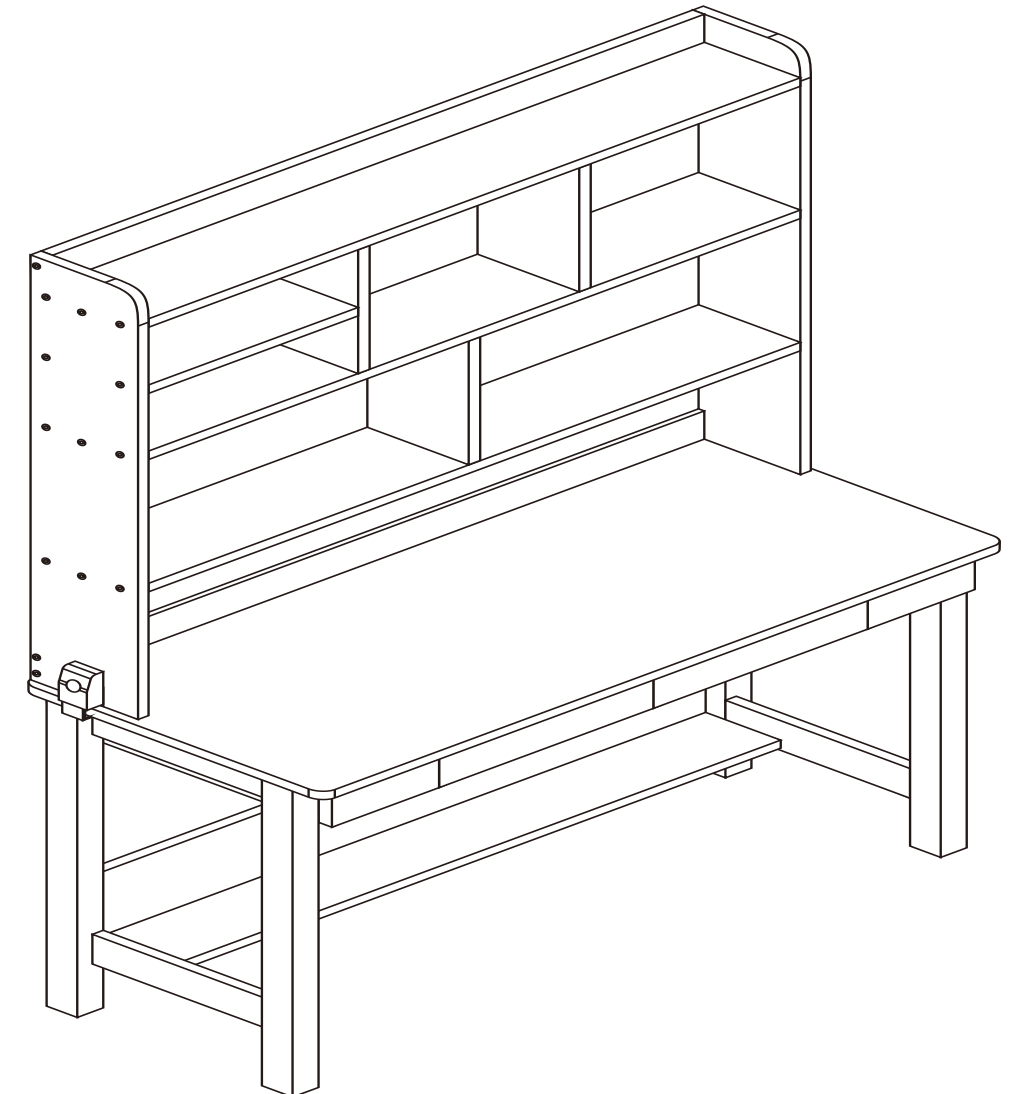
Congratulation on your purchase.

Questions and concerns about your our product ?

You can contact us, we are happy to serve you to  
your satisfaction!



## KIDS DESK & BOOKSHELF



## INSTRUCTION MANUAL

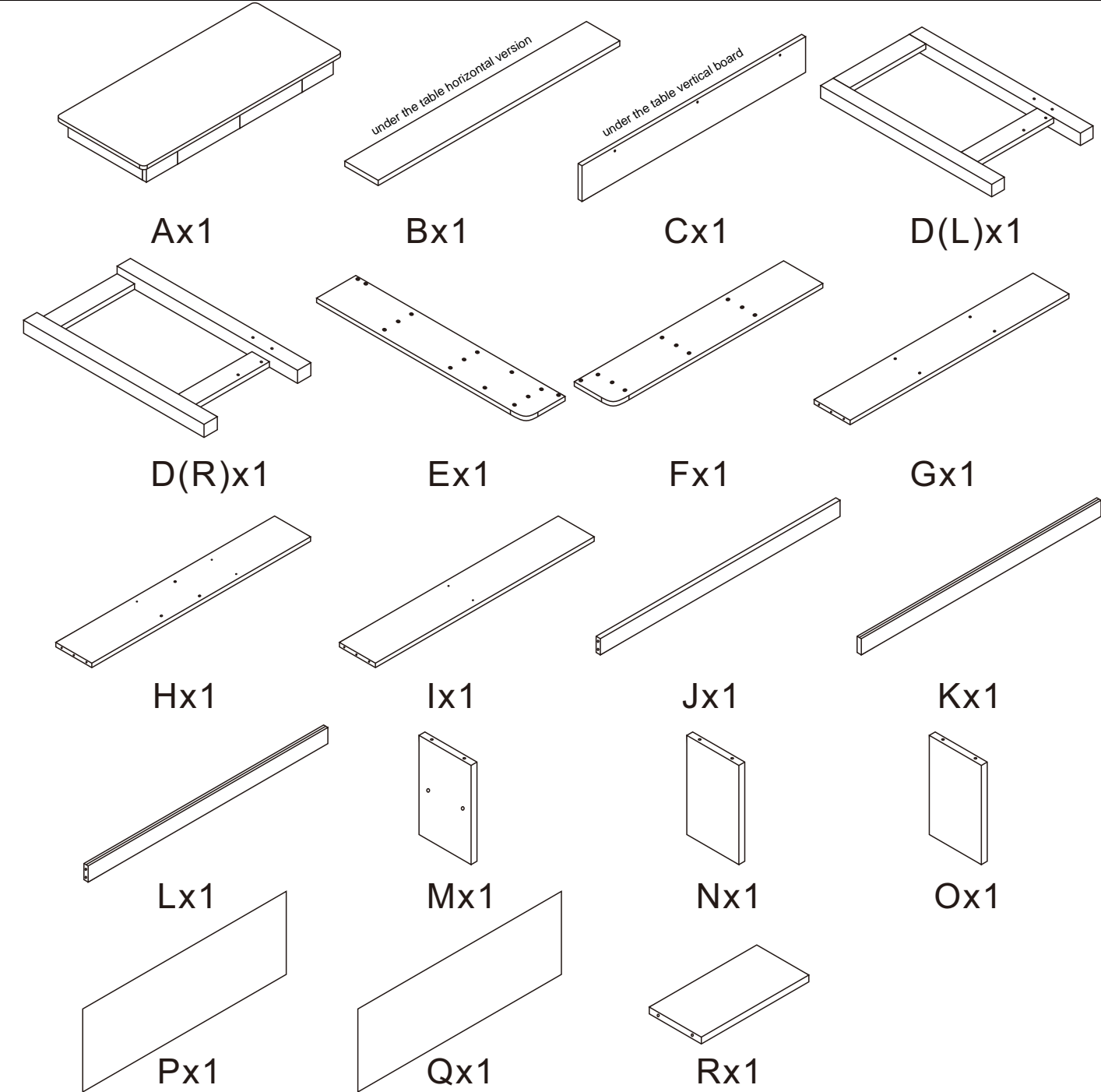
## Before you begin

- 1.Check for damaged or missing parts
- 2.Gather all tools prior to assembly.
- 3.Use the assembly, surface to prevent product damage during assembly.
- 4.Do not over tighten.
5. During assembly,as this may damage the product. .  
Do not use power tools.

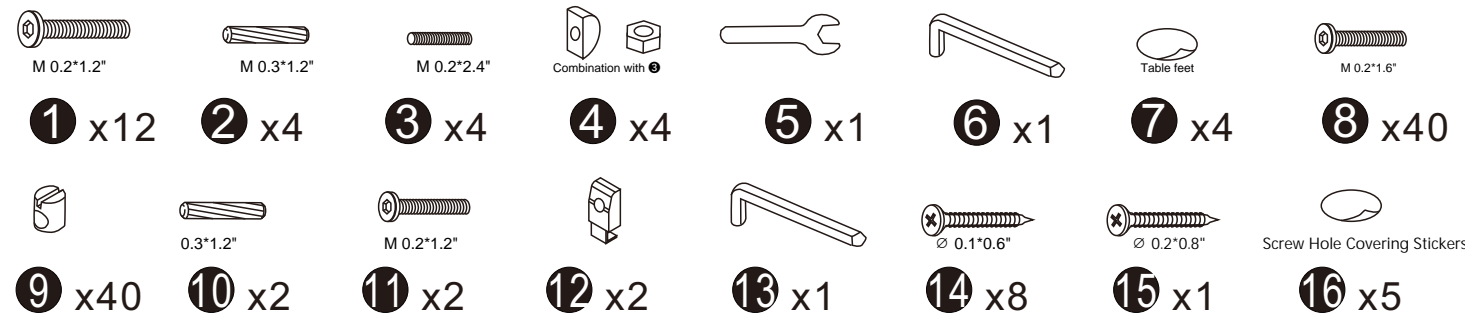
## Care Instruction

- 1.Wipe clean with damp cloth
- 2.Do not use strong detergents or abrasive cleaners, they may damage the surface
- 3.Check and tighten screws regularly
- 4.Do not stand on the product, do not use the product as a stepladder
- 5.Do not put anything hot on the surface.
- 6.Indoor use only.
- 7.Questions and concerns about your BALANBO product ? Send email to [alanbo@balanbo.com](mailto:alanbo@balanbo.com)

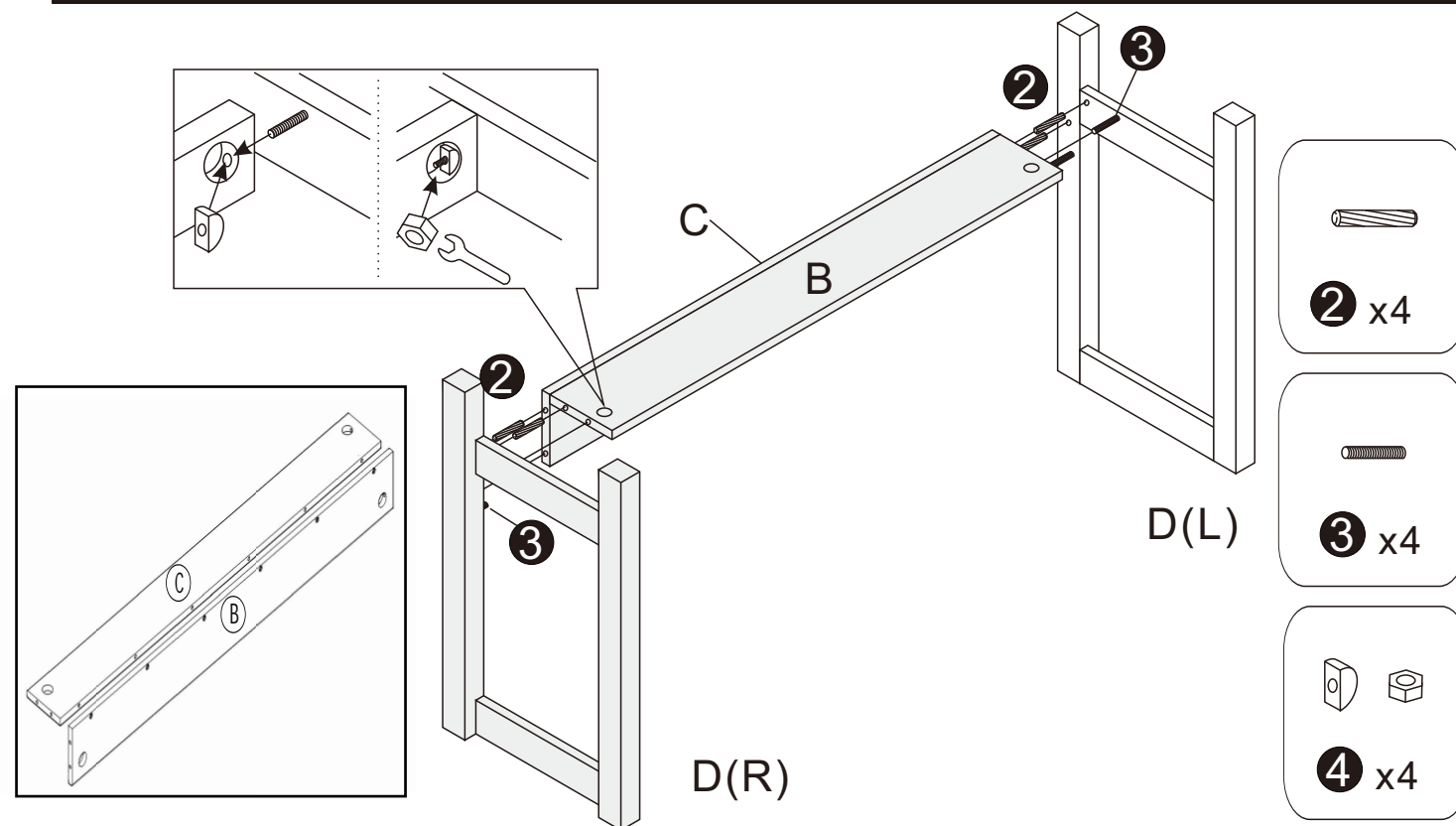
## Part List



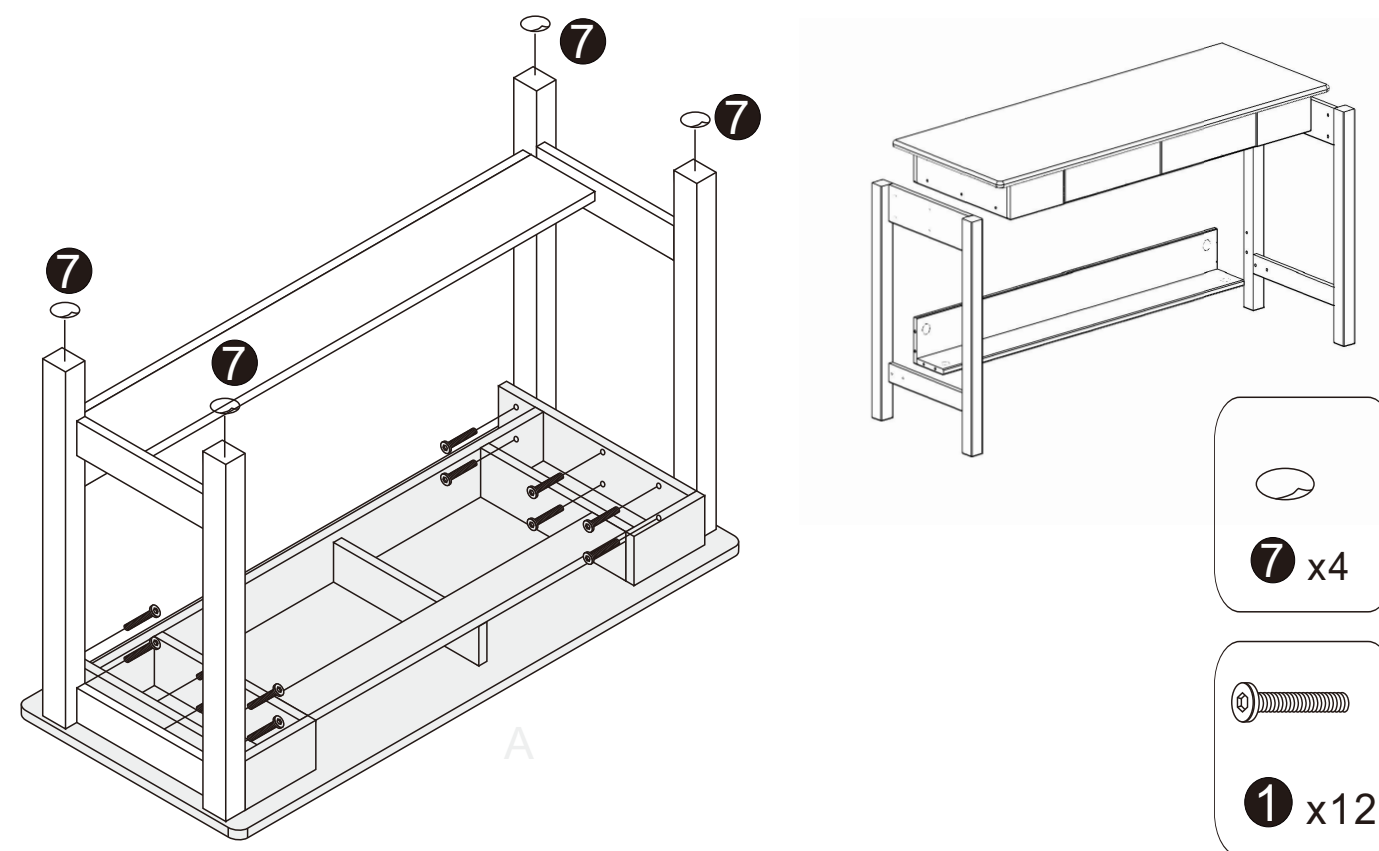
## Hardware List



STEP1

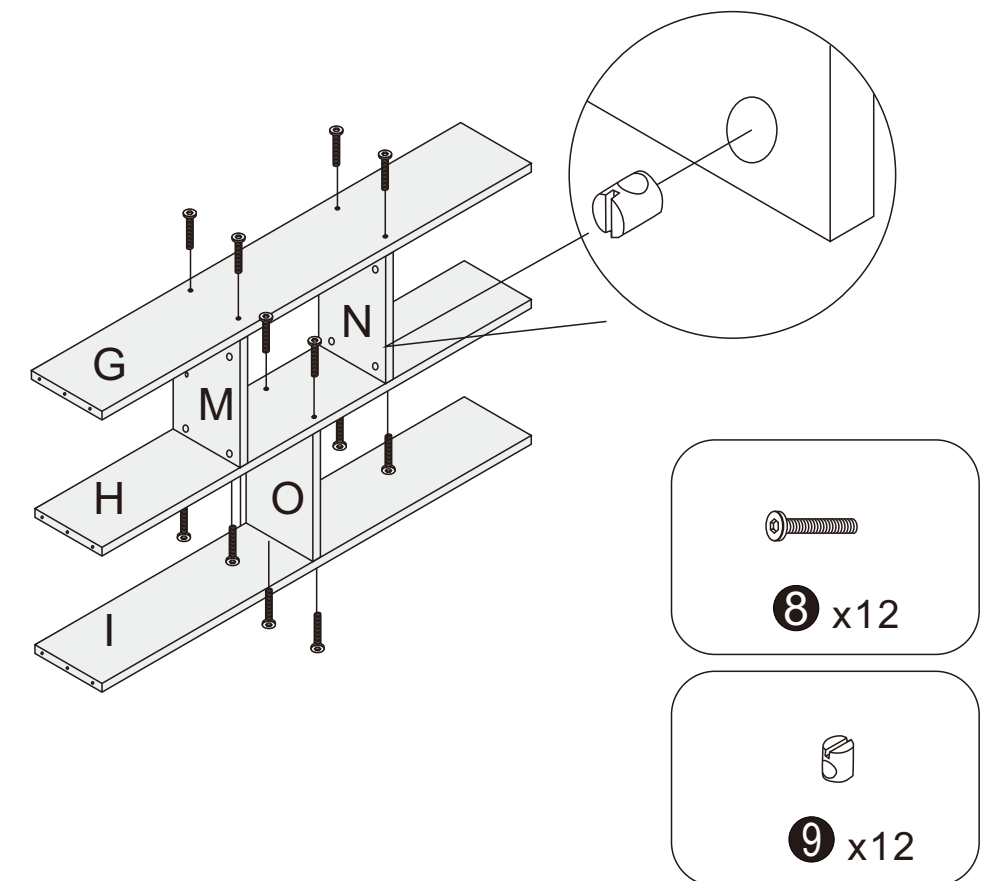


STEP2

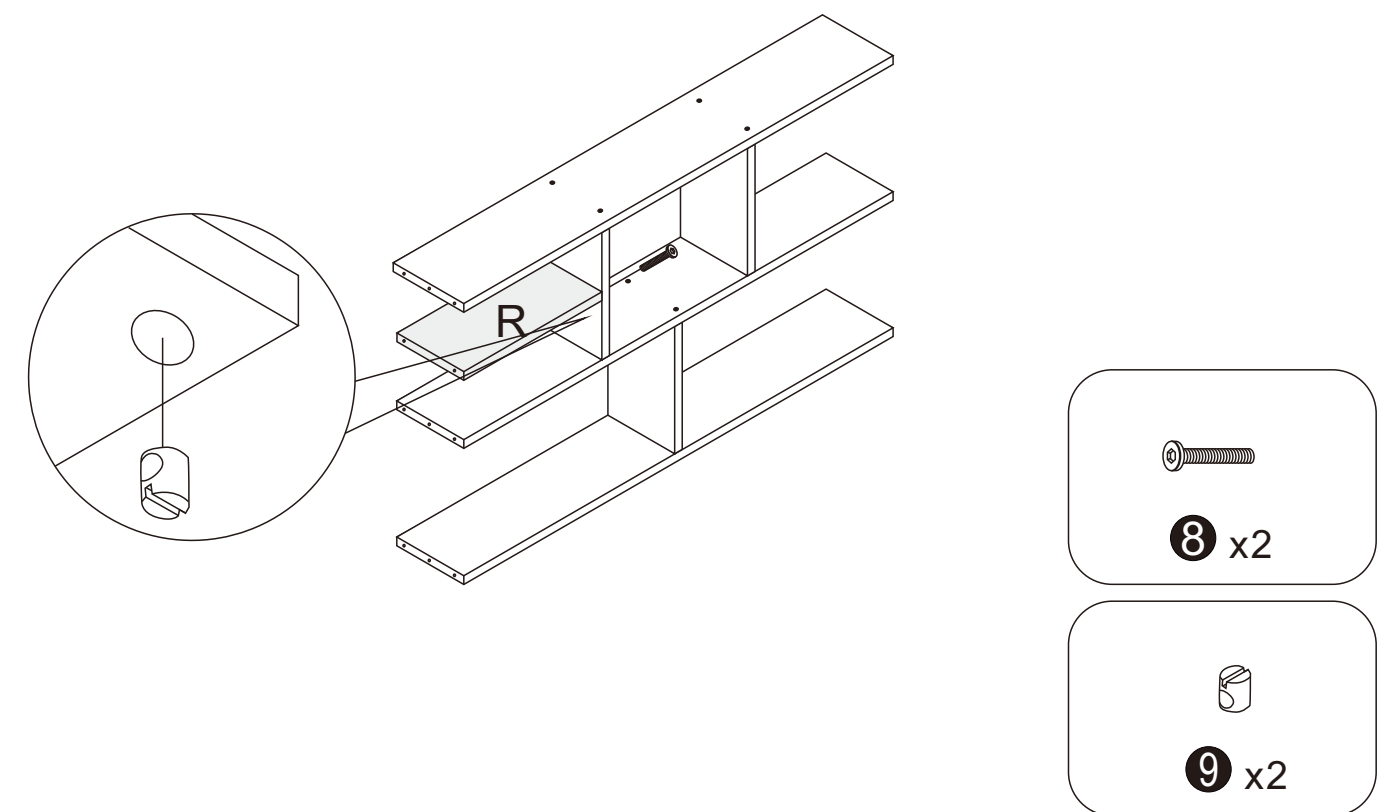


AFTER SALES SUPPORT

STEP3

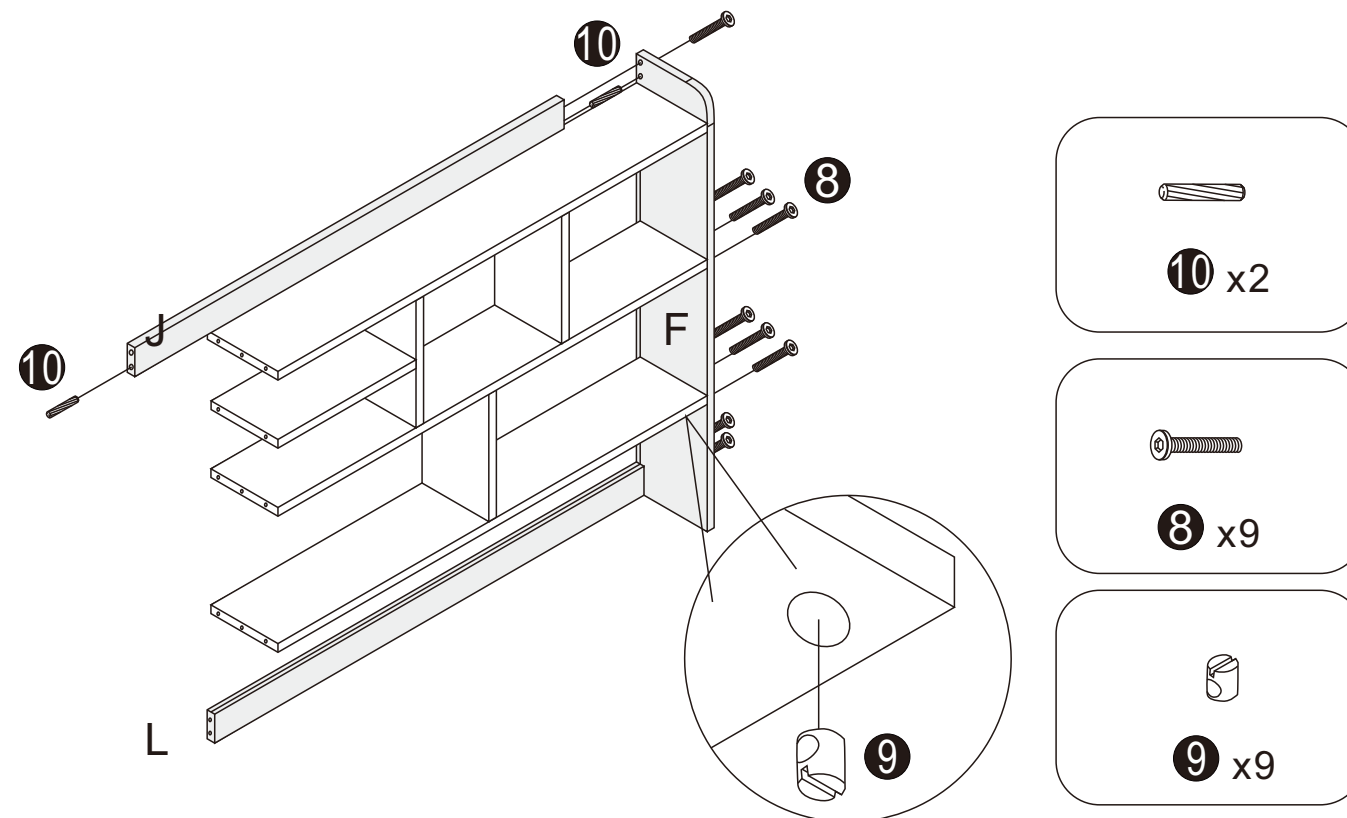


STEP4

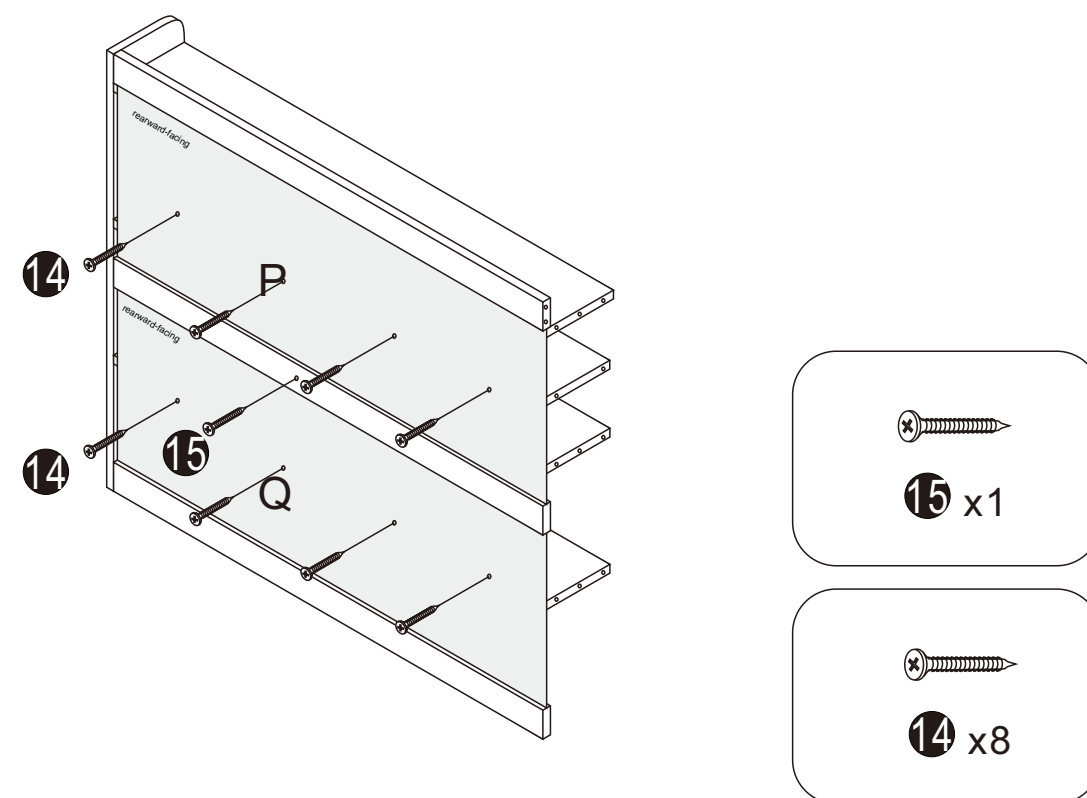


AFTER SALES SUPPORT

STEP5

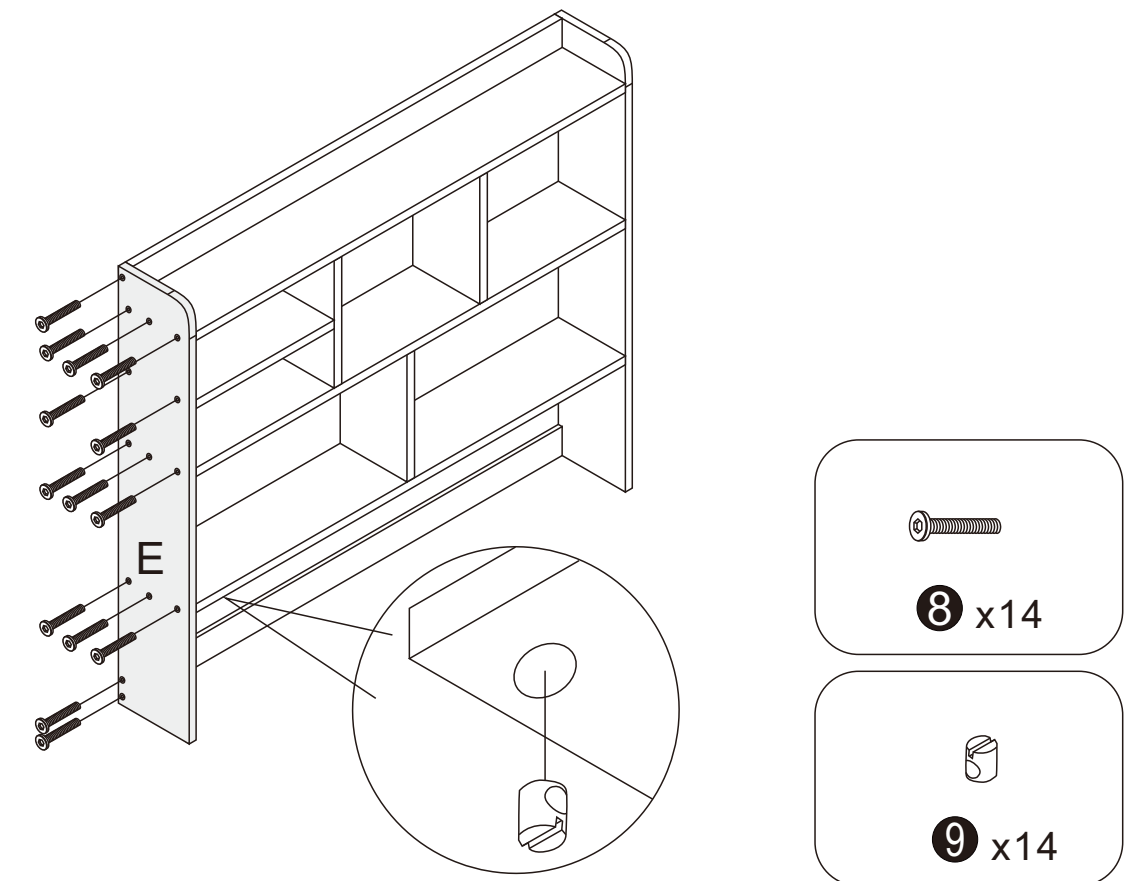


STEP6

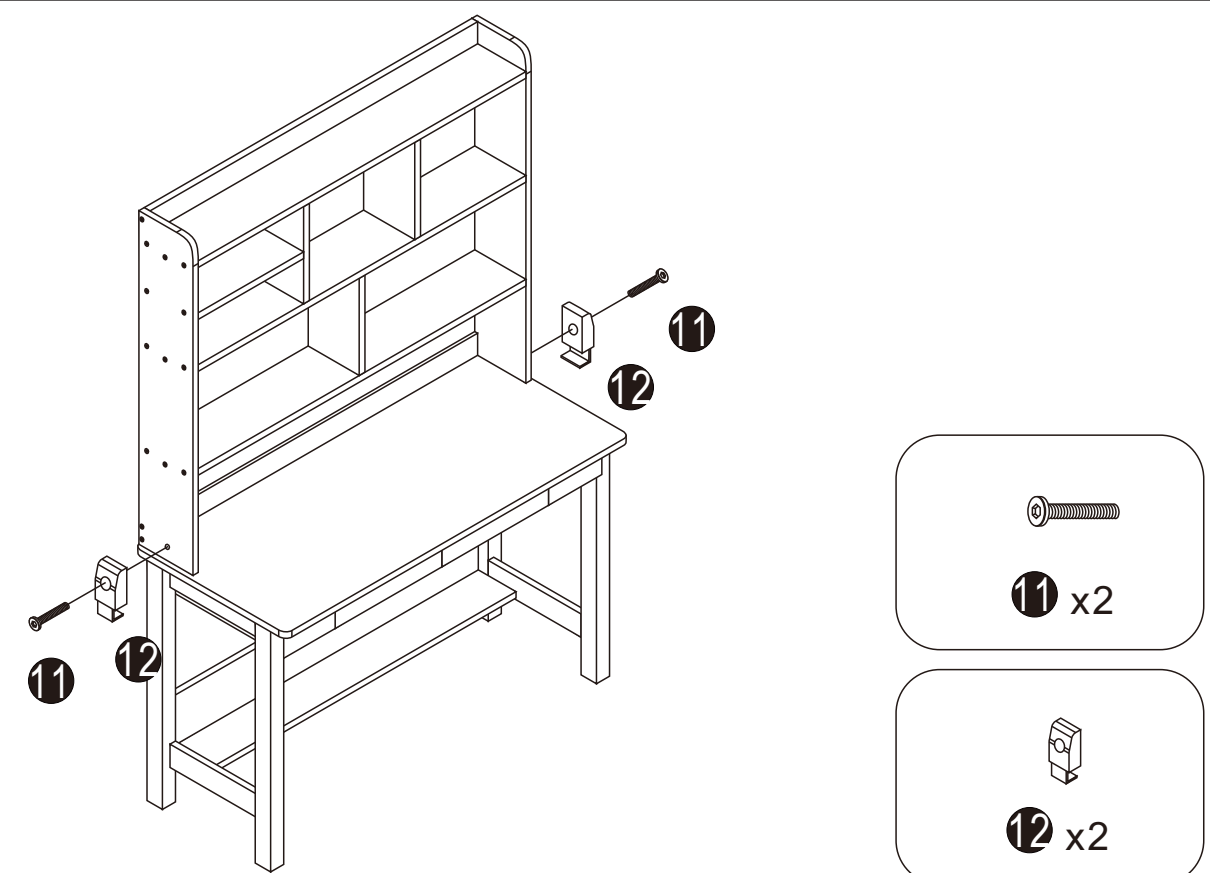


AFTER SALES SUPPORT

STEP7



STEP8



AFTER SALES SUPPORT