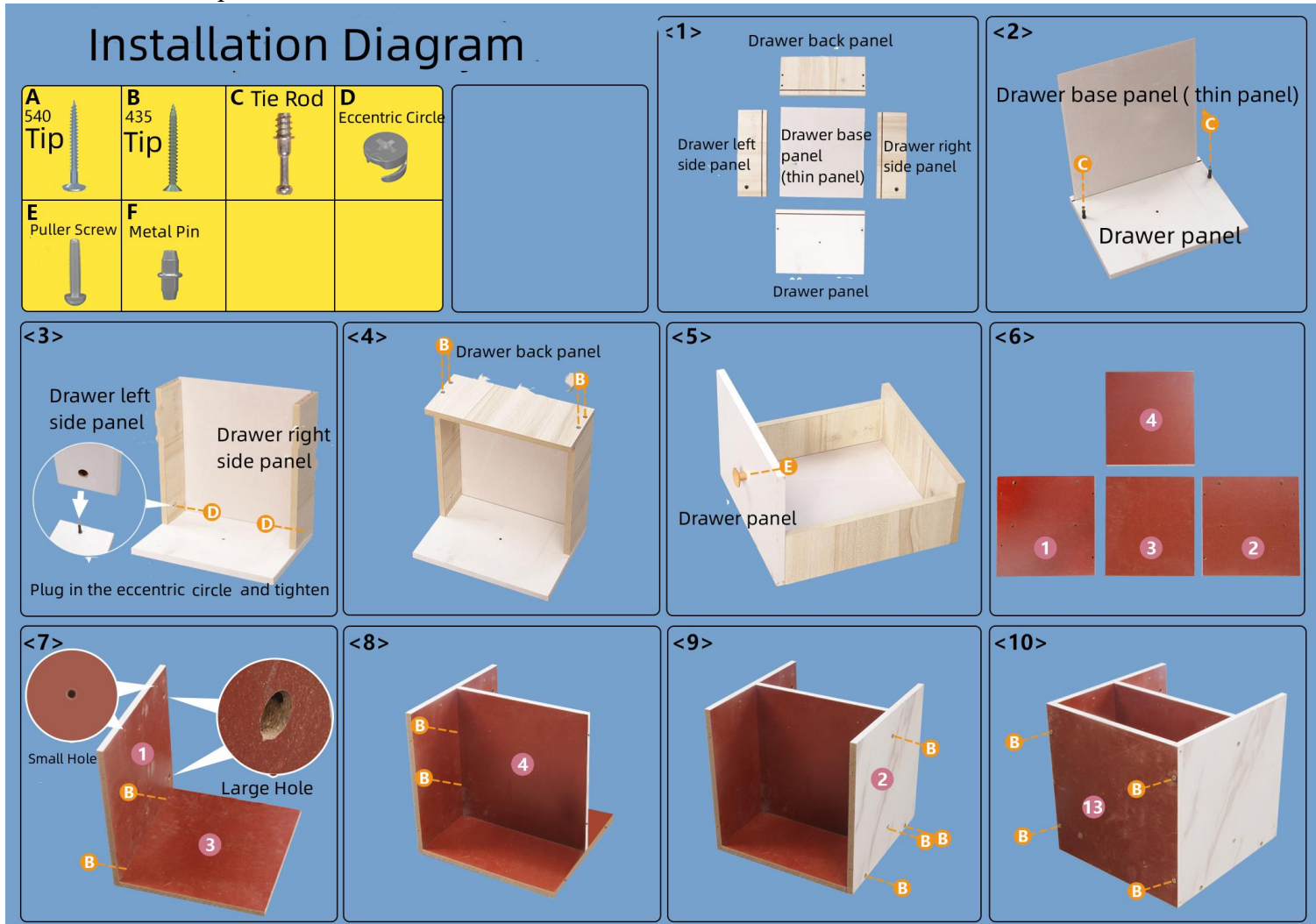


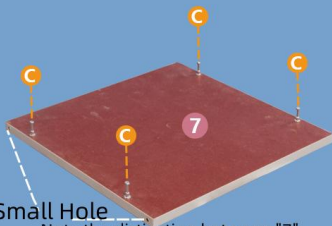
Installation Diagram

- A. 540 尖头-540 Tip
- B. 435 尖头-435 Tip
- C. 拉杆-Tie Rod
- D. 偏心圆-Eccentric Circle
- E. 拉手螺丝-Puller Screw
- F. 金属销-Metal Pin

抽屉后封板-Drawer back panel
 抽屉左侧板-Drawer left side panel
 抽屉底板（薄板）-Drawer base panel (thin panel)
 抽屉右侧板-Drawer right side panel
 抽屉面板-Drawer panel



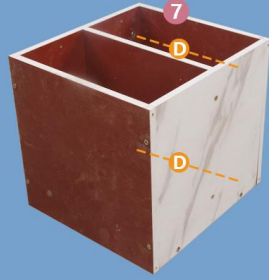
<11>



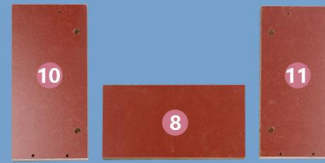
Small Hole

Note the distinction between "7" and "12", with small holes on both sides of the "7".

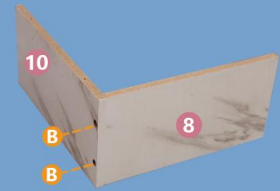
<12>



<13>

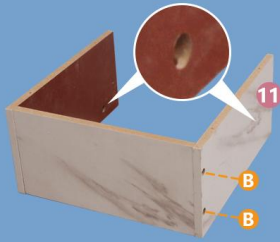


<14>

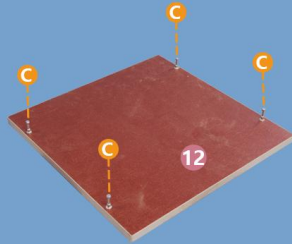


<15>

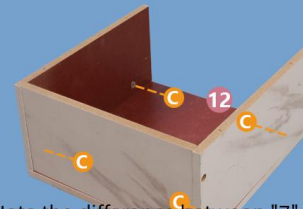
Large Hole



<16>



<17>



Note the difference between "7" and "12", and without holes on either side of the "7".

<18>



<19>



Insert the base into the opening of the two steel frames

<20>



Insert the ring

<21>



Secure the sides of the cabinet with the "A"

<22>

