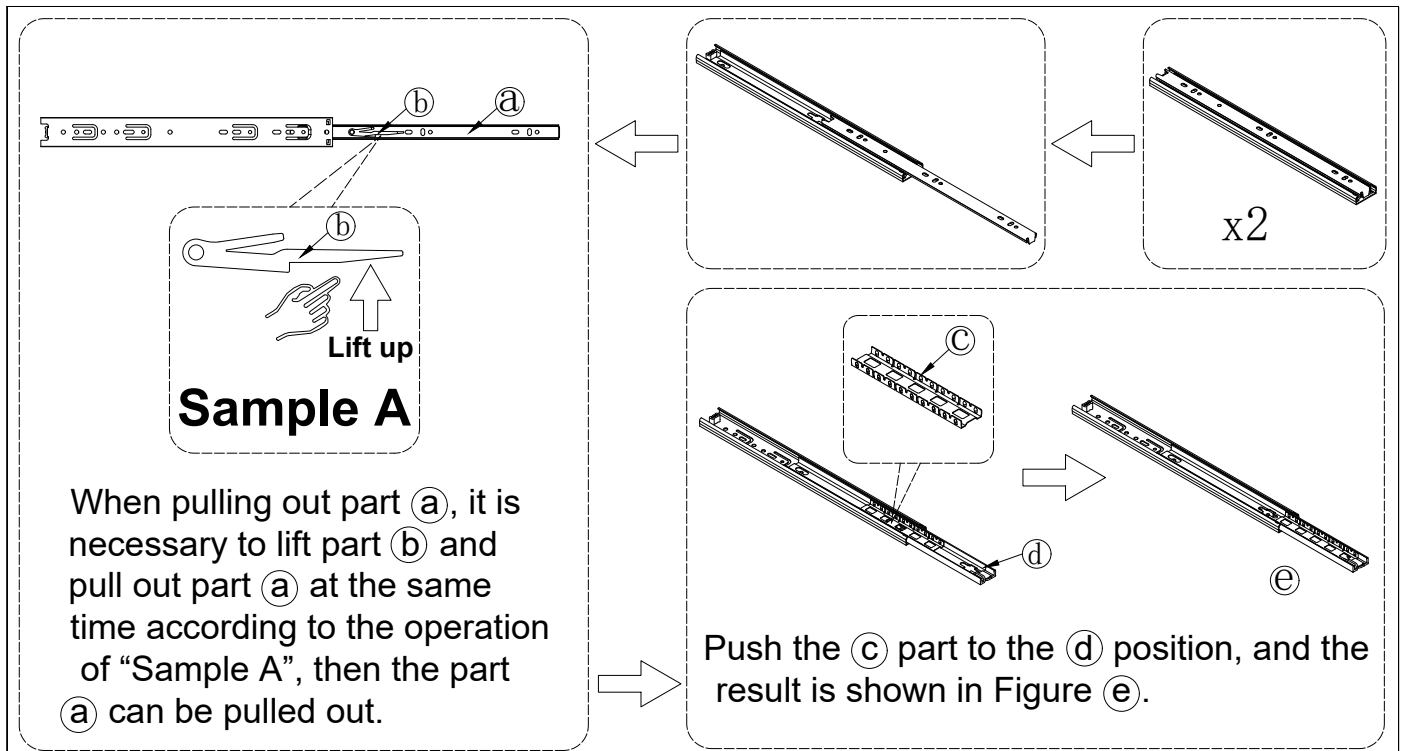
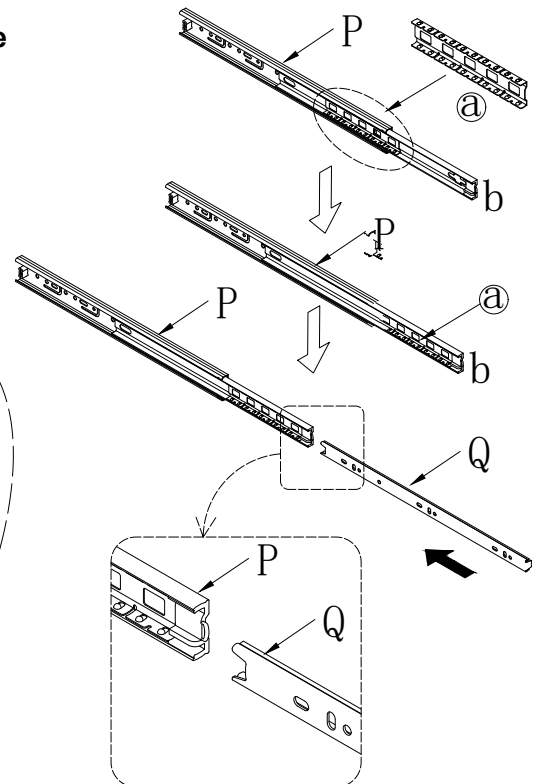
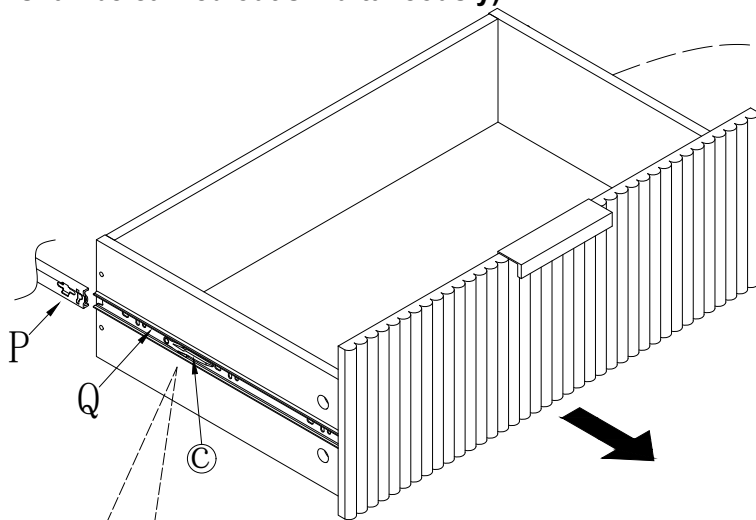


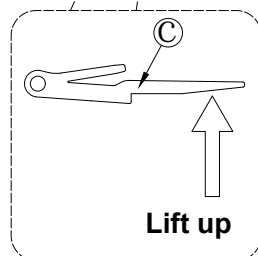
Assembly Steps (EN) /Montageschritte (DE)



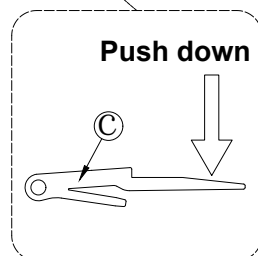
- (1)、When putting the drawer into the cabinet, first, push the "a" part of P to "b", then point the end of Q at "b", finally, put the drawer into the cabinet as shown in "Sample A";
- (2)、When removing the drawer, press "Sample B" and "Sample C" as shown, lift the left side of the drawer (C) part, press the right side of the drawer (C) part, and pull out the drawer. (The operation of "Sample B" and "Sample C" shall be carried out simultaneously)



Sample A



Sample B



Sample C