

ASSEMBLY INSTRUCTIONS

TAYLOR NIGHT STAND ITEM# 28501

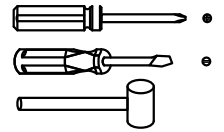
ASSEMBLY
REQUIREMENTS:

1-Person
Assembly

1.5 Hour
Assembly Time
(Approximate)

Tools Required:
(Not Provided)

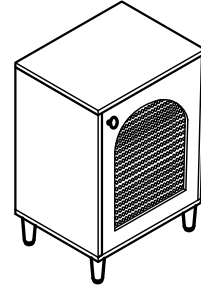
Phillips Screwdriver
Flat Screwdriver
Mallet



Thank you for purchasing our product!

Please refer and use this assembly instruction to assemble the product. Contact our customer service department in case there are any missing or damage parts or hardware. Replacement parts are normally shipped within 2 or 3 days.

Email: replacementparts@buylateral.com
Within 30 days from delivery date



PRODUCTS PURCHASED THROUGH OUR AUTHORIZED VENDORS ONLY ARE ELIGIBLE FOR REPLACEMENT PARTS.

We appreciate your business!

THIS PRODUCT IS FOR INDOOR AND HOUSEHOLD USE ONLY - NOT FOR COMMERCIAL USE.

ASSEMBLY PREPARATION

1. Remove all packaging materials, staples and packing straps from the carton.
2. Refer to Parts List and Hardware List and ensure parts and hardware are correct before assembly. Contact customer service for missing parts.
3. Place all wooden parts on a clean, flat and soft surface (e.g. carpet or rug) to prevent scratch and damage to parts.

SAFETY PRECAUTION

1. KEEP ALL HARDWARE PARTS OUT OF REACH OF CHILDREN.
2. DISPOSE PLASTIC PACKAGING MATERIAL IMMEDIATELY TO AVOID ANY RISK OF SUFFOCATION TO CHILDREN AND ANIMALS.

TIPS FOR ASSEMBLY

1. Allow ample room for assembly and in close proximity to where product will be placed.
2. Assemble the product on a surface that does not scratch or damage the exterior gloss and finish of the furniture.
3. Identify all of the parts, hardware and quantities required for each step.
4. During assembly, do not over-tighten any fittings as this may cause damage.
5. DO NOT USE POWER TOOLS TO ASSEMBLE THIS PRODUCT.
6. Always place the product on a flat, level surface.
7. Do not sit or stand on the partially assembled product; only use the product for which it is intended.

CARE AND MAINTENANCE

1. Wipe clean with a soft, dry cloth; avoid the use of harsh chemicals or household cleaners as they may damage the exterior finish of the furniture.
2. Hardware may loosen over time. Periodically, check that all connections are tight; re-tighten as necessary.
3. Solid wood is impacted by heat and humidity fluctuations which may cause small joint separations or hairline cracks; place the furniture away from direct sunlight and air conditioning vents, heating vents or units to protect the furniture.

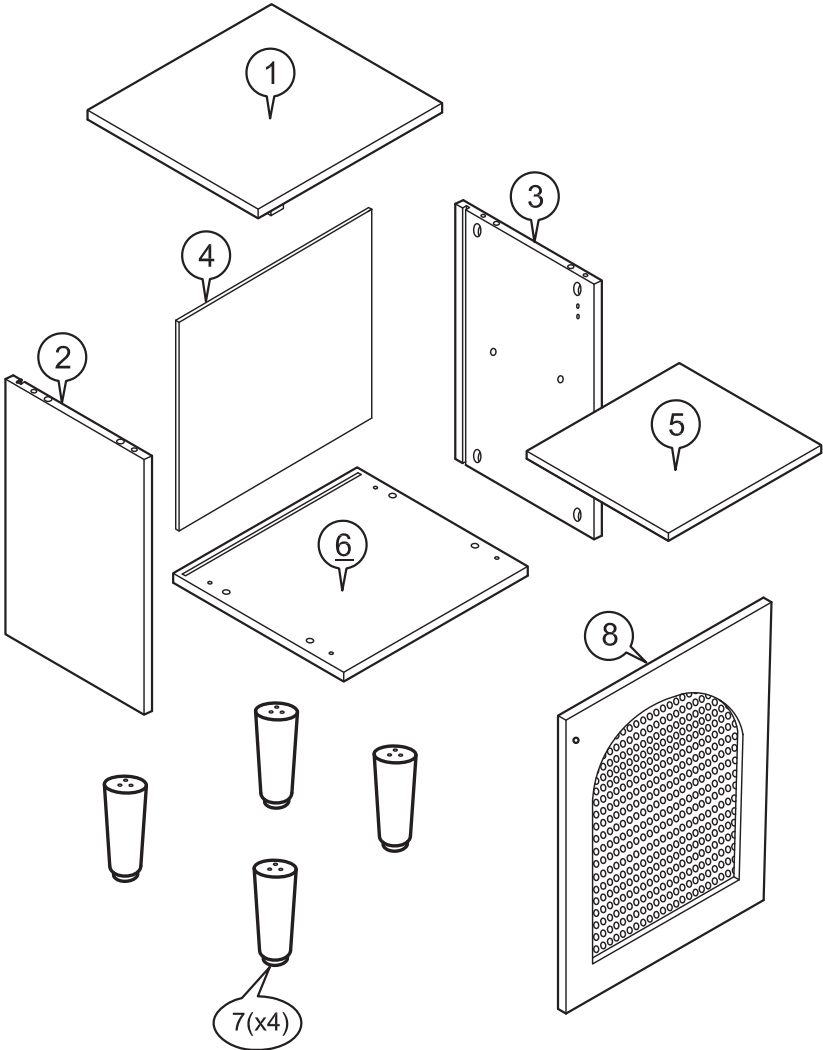
ASSEMBLY INSTRUCTIONS

TAYLOR NIGHTS STAND ITEM # 28501

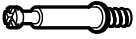



PARTS LIST





Part list	Description	Qty	Part List	Description	Qty
1	Top Panel	1pc	5	Shelf Panel	1pc
2	Left Panel	1pc	6	Bottom Panel	1pc
3	Right Panel	1pc	7	Leg	4pcs
4	Back Panel	1pc	8	Door	1pc





PARTS ASSEMBLY OVERVIEW



Hardware List

DESCRIPTION	QTY	EXTRA
A  24mm Bolt	8	2
B  Washer 12mm	8	2
C  M8 x 30mm Wood Dowel	8	2
D  M3.5 x 16mm screw	36	2

DESCRIPTION	QTY	EXTRA
E  Base Plate	4	-
F  MINI HINGES SOFT CLOSE 7/8"	2	-
G  Shelf - Pin	4	2
H  Backply Stopper	4	2

DESCRIPTION	QTY	EXTRA
I  M3 x 20mm Screw	4	2
J  Handle	1	-
K  M4 x 20mm Handle Screw	1	1
L  M4 Allen Key	1	-

* Extra hardware for spare use

INSTRUCTIONS FOR CAM-BOLT & CAM-LOCK

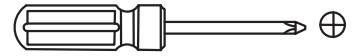


CAM-BOLT

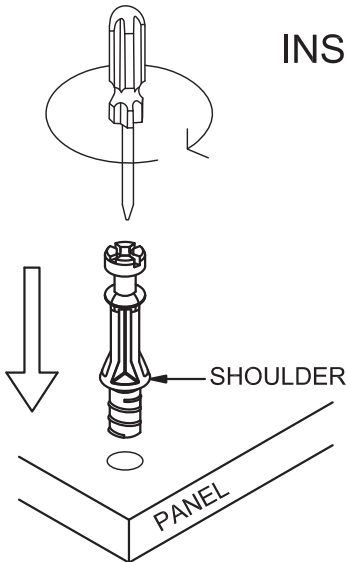


CAM-LOCK

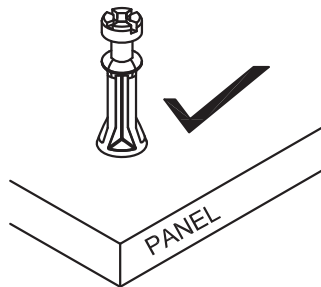
Tool Required



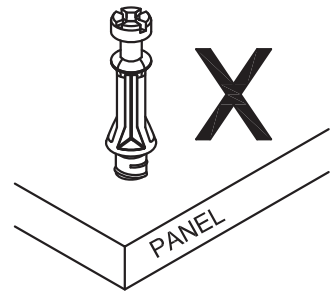
INSERTING AND TIGHTENING CAM-BOLT



Place Cam-bolt on pre-drilled hole and screw in vertically



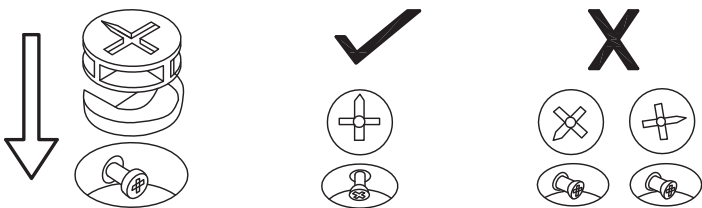
Shoulder is flushed (on the same level) with the panel.



Shoulder is above the panel.

Place Cam-bolt on the designated pre-drilled hole on the panel. Use a Philips Screwdriver to screw-in Cam-bolt vertically until shoulder is flushed (on the same level) with panel.

INSERTING CAM-LOCK

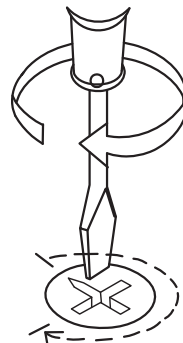


Insert Cam-lock with arrow align to Cam-bolt head

CORRECT

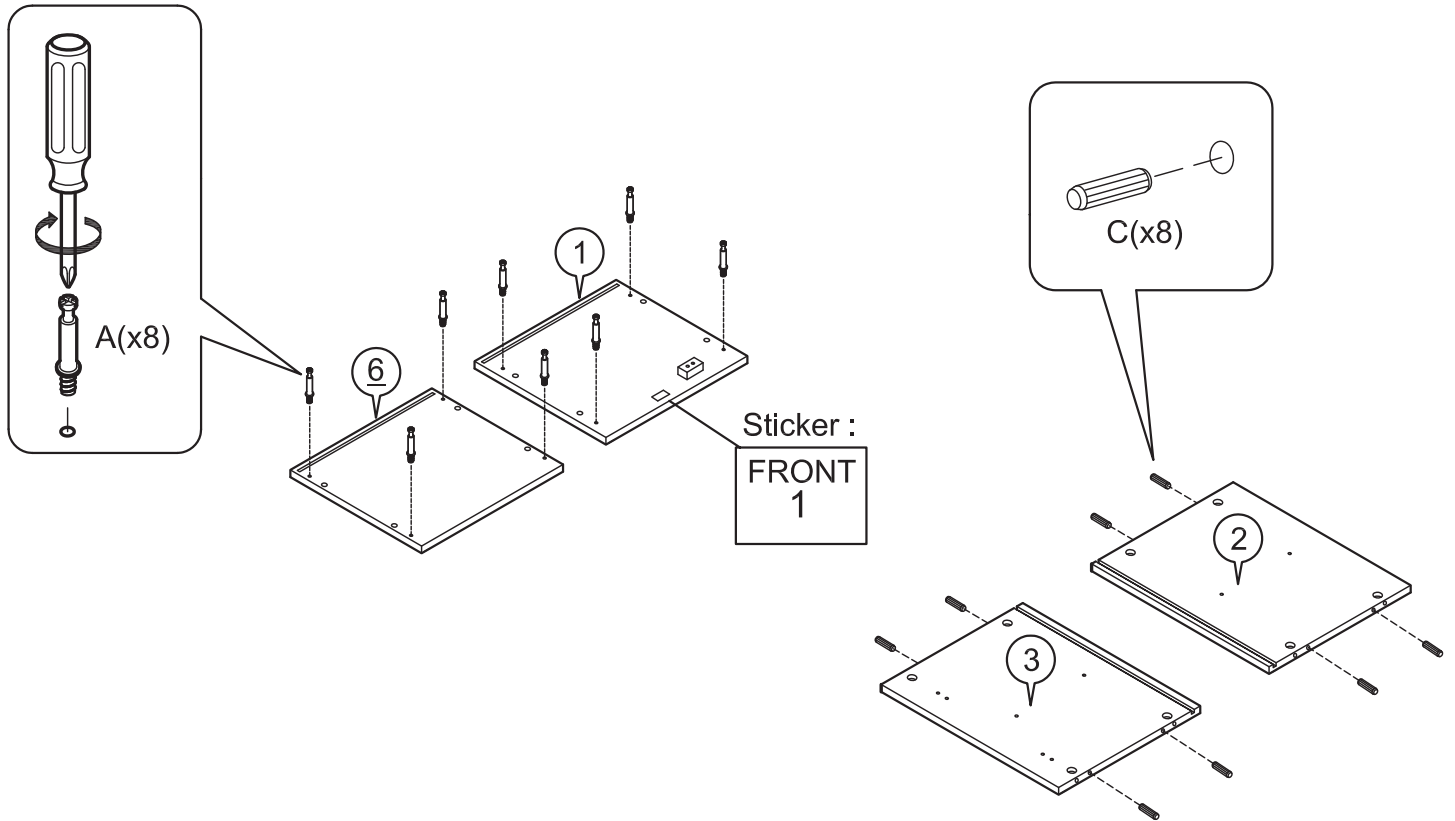
WRONG

TIGHTENING CAM-LOCK



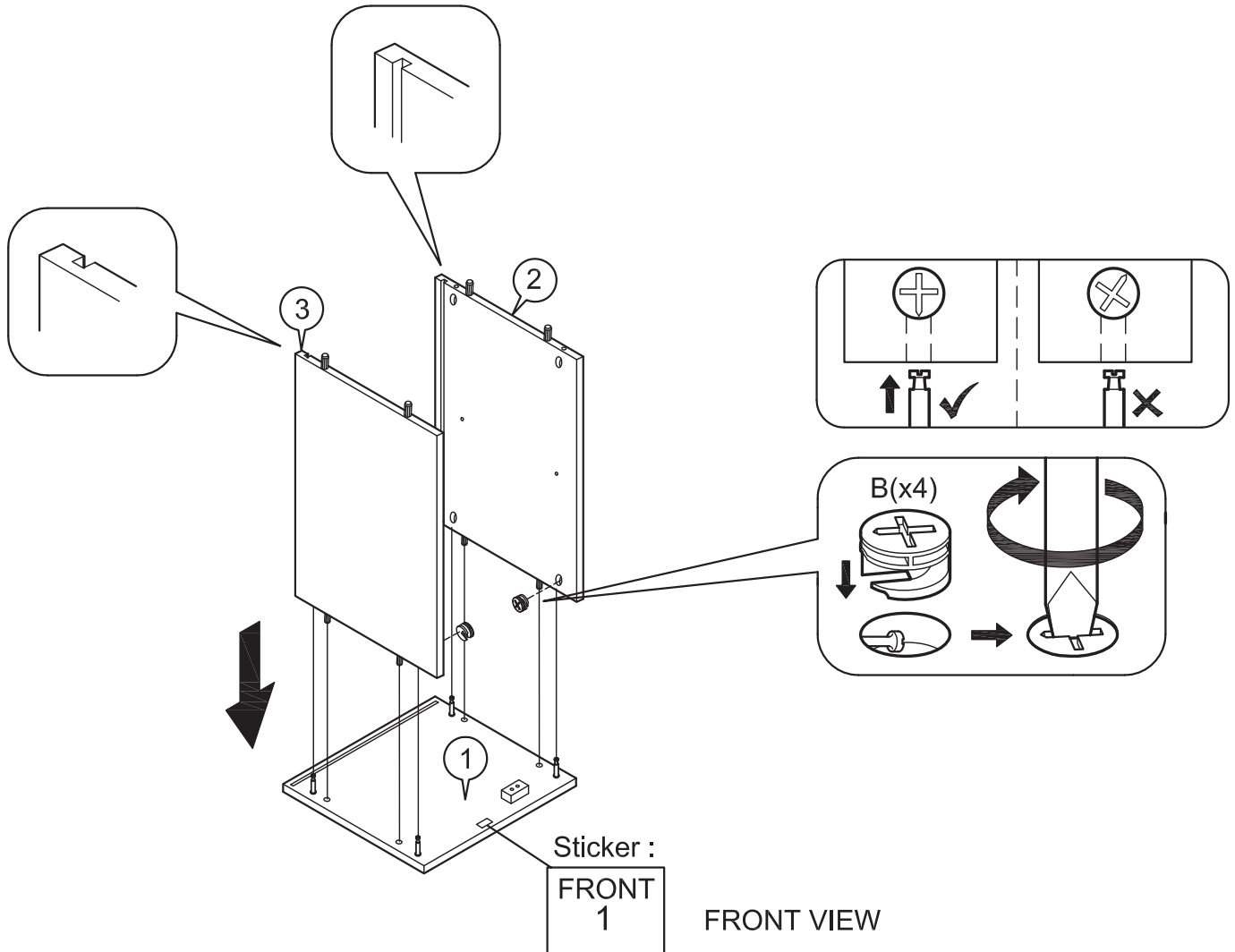
Use a Flat-head Screwdriver to turn Cam-lock clockwise so it locks onto the head of the Cam-bolt. Turn until it is snug (about 3/4ths of a turn) -- over-tightening could damage Cam-lock or/and cam-bolt.

STEP 1



- a) Lay Top Panel (1), Left Panel (2), Right Panel (3) and Bottom Panel (6) on a material that does not scratch or damage the parts.
- b) Screw in Cam-bolt (A) into the designated holes as shown on (1 & 6).
Refer to Page 4 for instructions on inserting and tightening cam-bolt.
- c) Insert Wood Dowel (C) into the inner two holes on the designated edges of (2 & 3).

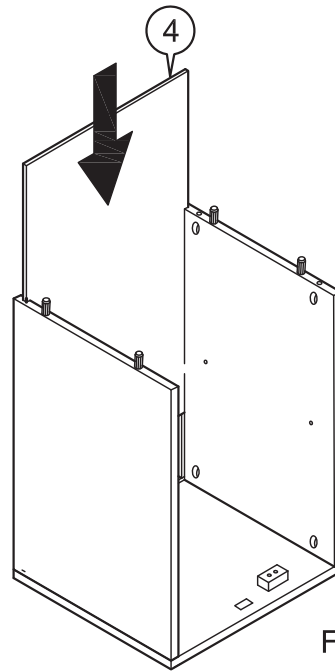
STEP 2



a) Attach Left Panel (2) and Right Panel (3) to Top Panel (1) via wood dowels and cam-bolts on the respective parts.
Note : Check that the groove on the three parts are aligned.

b) Insert Cam-lock (B) into the holes on (2 & 3) and turn clockwise to lock onto the cam-bolt on (1). Refer to Page 4 for instructions on inserting and tightening cam-lock.

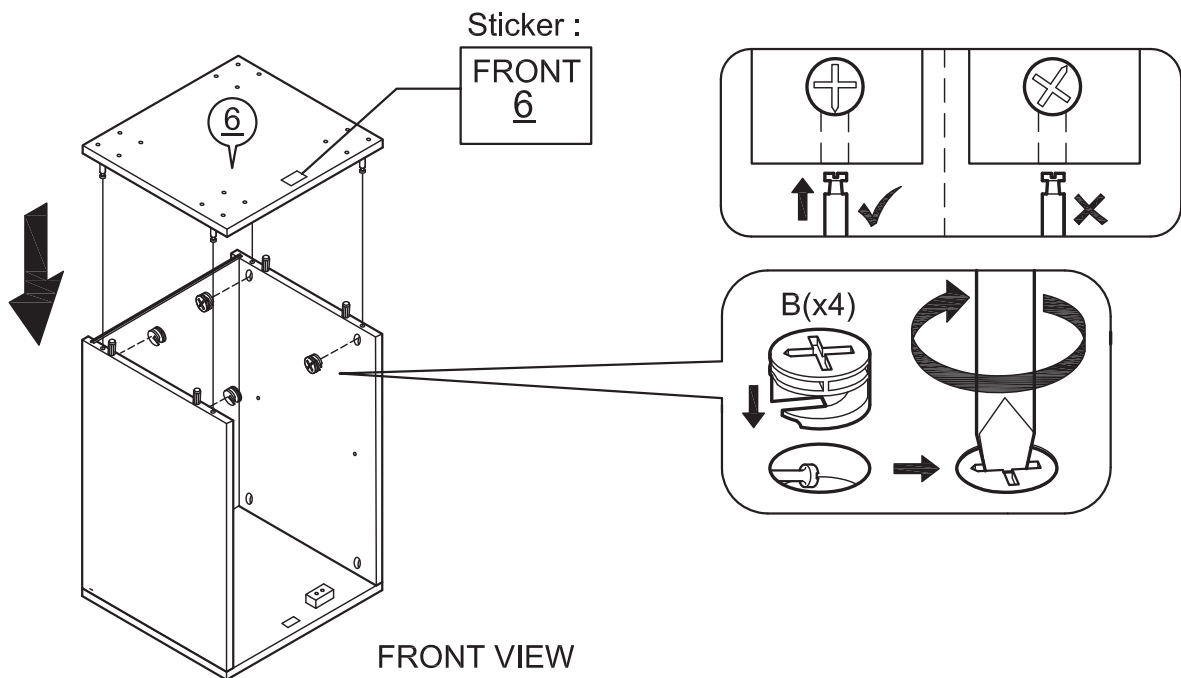
STEP 3



FRONT VIEW

- a) Fit Back Panel (4) by inserting the long edges of (4) into the groove on Left & Right Panel. Ensure the bottom edge of (4) also fits into the groove on Top Panel.

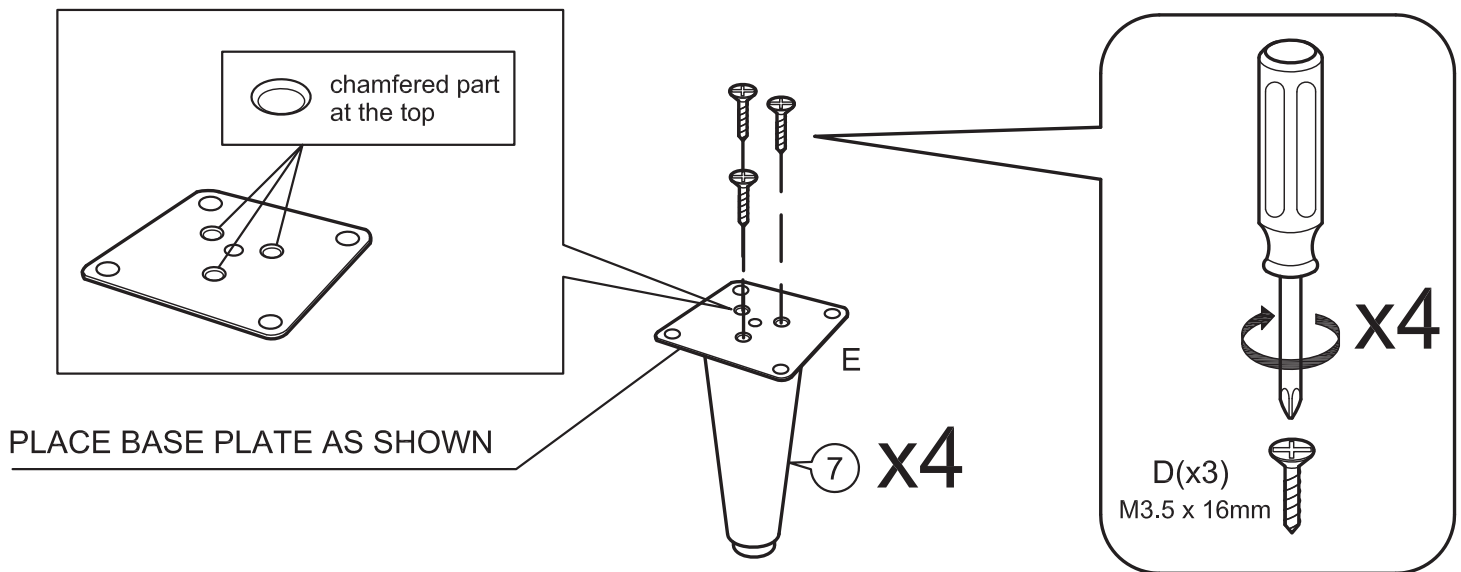
STEP 4



FRONT VIEW

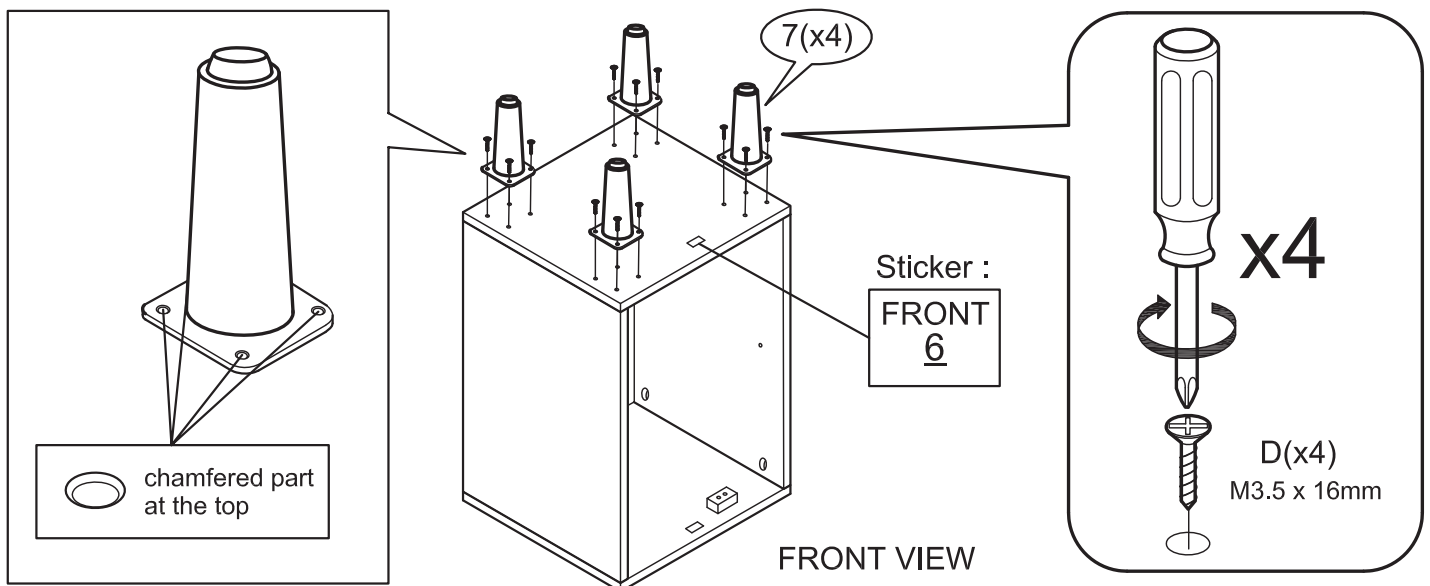
- a) Attach Bottom Panel (6) to Left Panel and Right Panel via cam-bolts and wood dowels on the respective parts. Note : Check that the top edge of the Back Panel fits into the groove on (6).
- b) Insert Cam-lock (B) into the holes on Left and Right Panel and turn clockwise to lock onto the cam-bolt on (6).

STEP 5



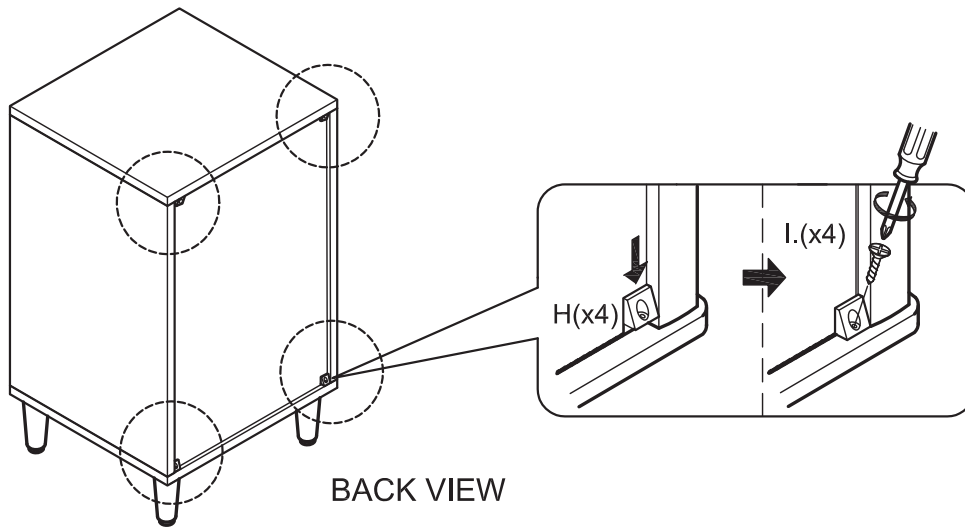
- Place Base Panel (E) on the top surface of Leg (7) and align the screw holes on the two parts.
- Use Screw (D) to fasten (E) to (7).

STEP 6



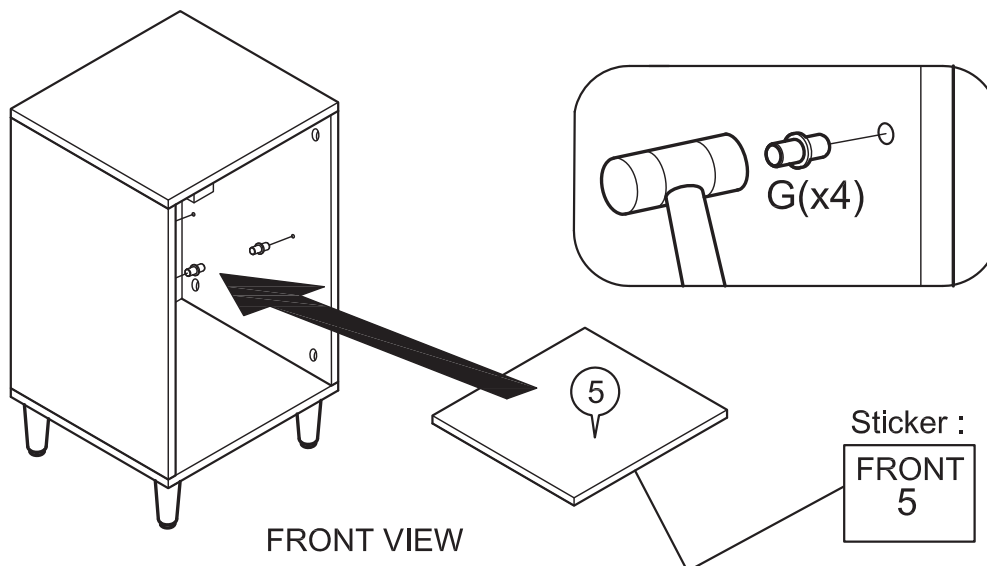
- Place Base Plate on each Leg (7) at each corner of Bottom Panel as shown to align the screw holes on Base Plate to the screw holes on the Bottom Panel.
- Use Screw (D) to fasten the Base Plate on each leg to the Bottom Panel. Do not the screw completely until all four screws are in place on each Base Plate.

STEP 7



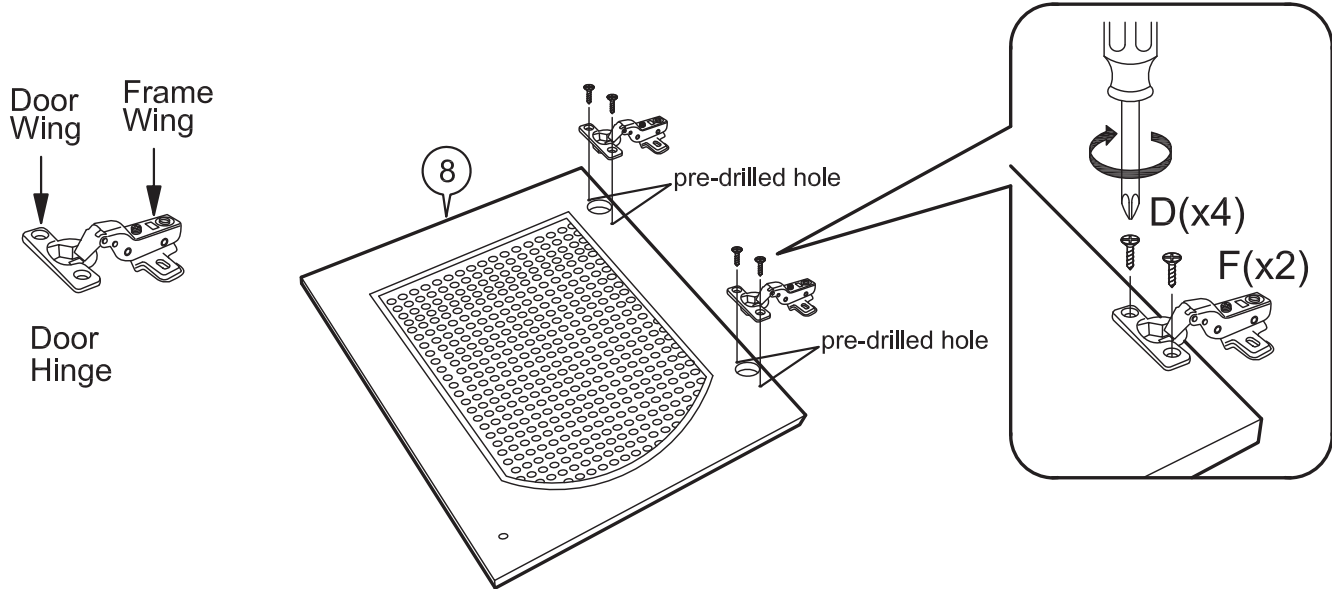
- Set the assembly from STEP 6 right-side up.
- Wedge Back Stopper (H) at each corner as shown to fit into the groove and against Back Panel.
- Fasten (H) using Screw (I).

STEP 8



- Insert Shelf Pin (G) into the designated holes on Left and Right Side Panel, Use a mallet to tap in (G) if necessary.
- Place Shelf (5) by tilting it to fit between Side Panels and then level it to sit on (G).

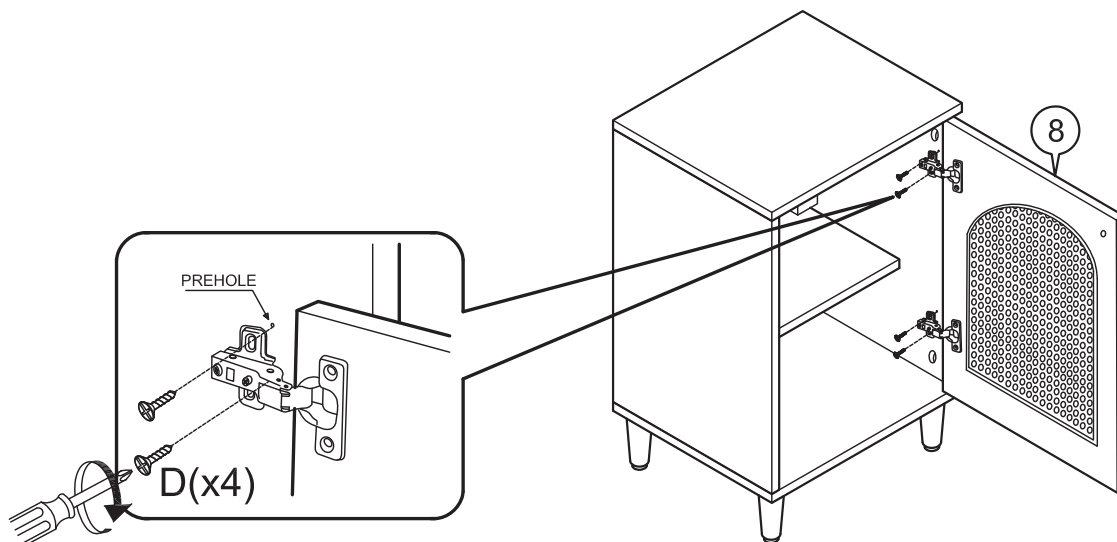
STEP 9



a) Place the interior surface of Door (8) facing up as shown on a material that does not scratch or damage the front surface.

b) Place Hinge (F) to fit the cup on the Door Wing of the Hinge into the hinge well on (8). Align the screw holes on the Door Wing of the Hinge to the pilot holes on (8) and use Screw (D) to fasten Door Wing.

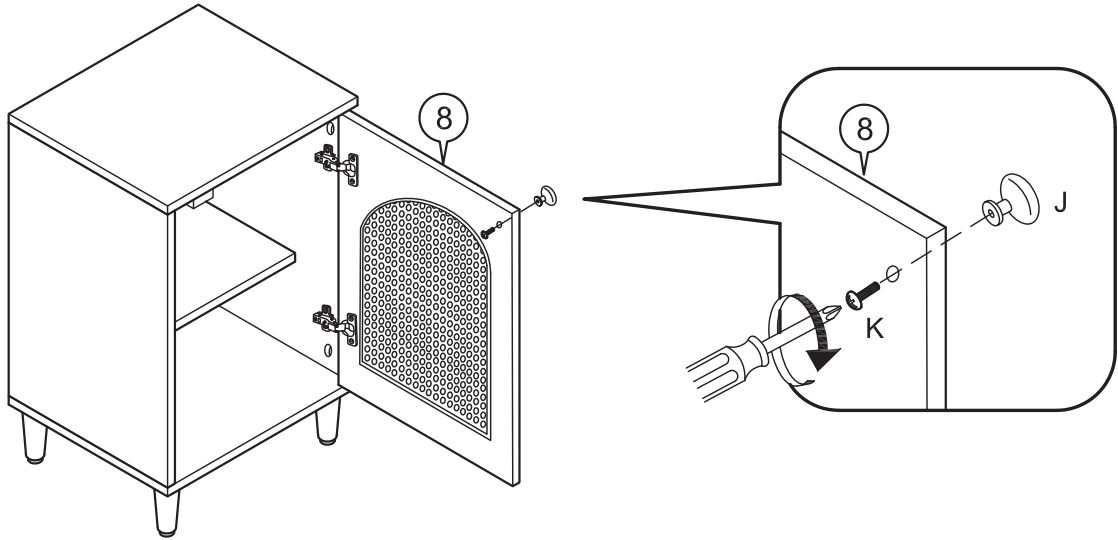
STEP 10



a) Position Door (8) as shown.

b) Align the screw holes on the Frame Wing of the hinge to the pilot holes on Side Panel and fasten with Screw (D).

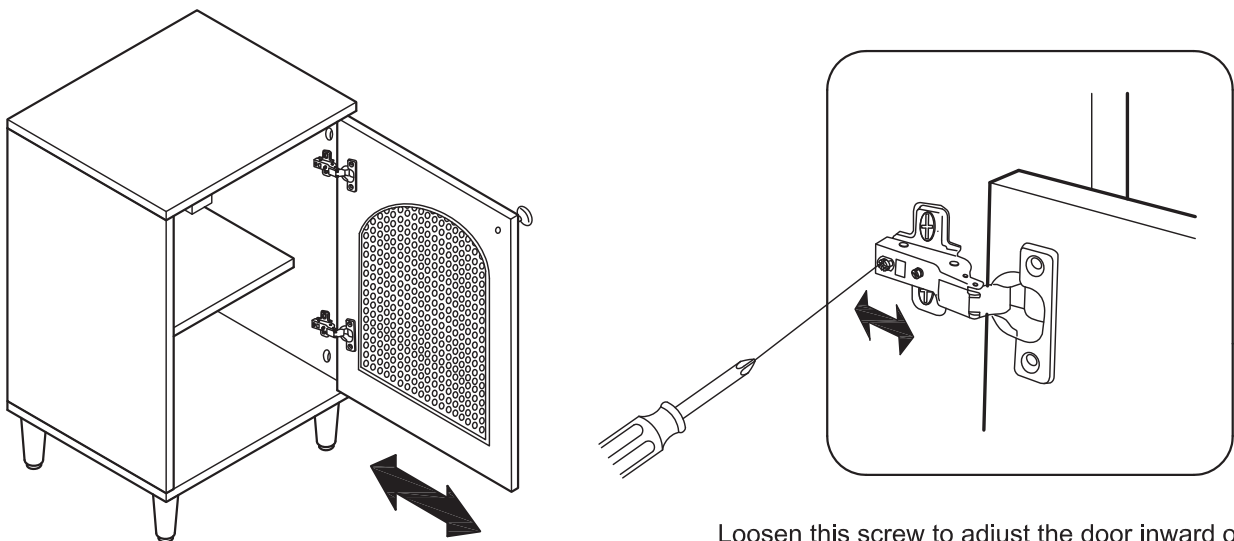
STEP 11



Use Screw (K) to fasten Handle (J) to Door (8).
The assembly of the nightstand is complete.

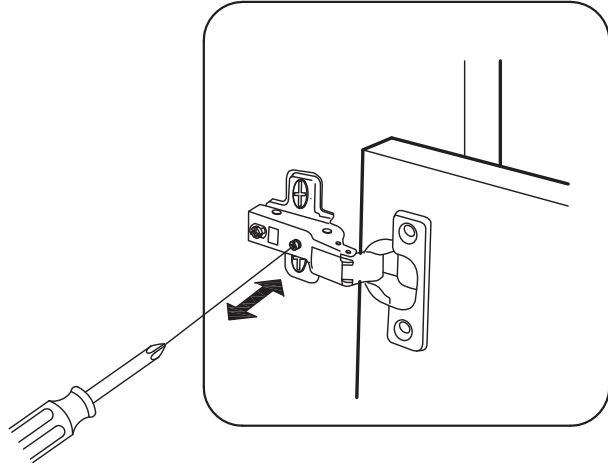
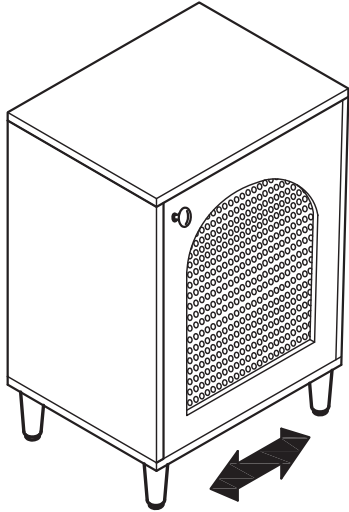
DOOR ADJUSTMENT/ALIGNMENT

Door Adjustment Procedure A



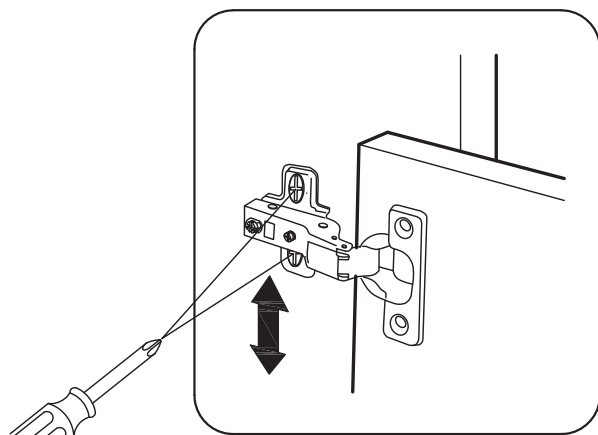
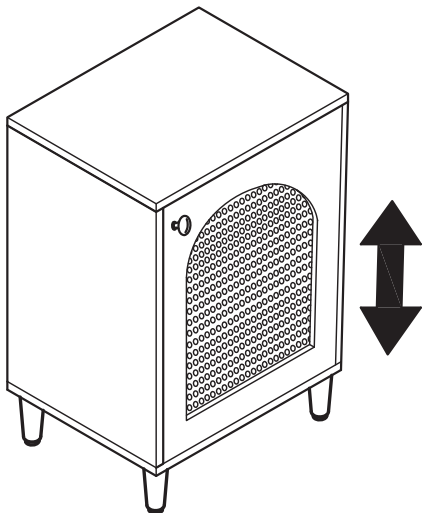
Loosen this screw to adjust the door inward or outward.
Tighten the screw when the adjustment is complete.

Door Adjustment Procedure B



Loosen this screw to align the door sideways.
Tighten the screw when the alignment is complete.

Door Adjustment Procedure C



Loosen these two screws to adjust the door up or down.
Tighten the screws when the adjustment is complete.