



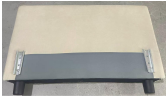



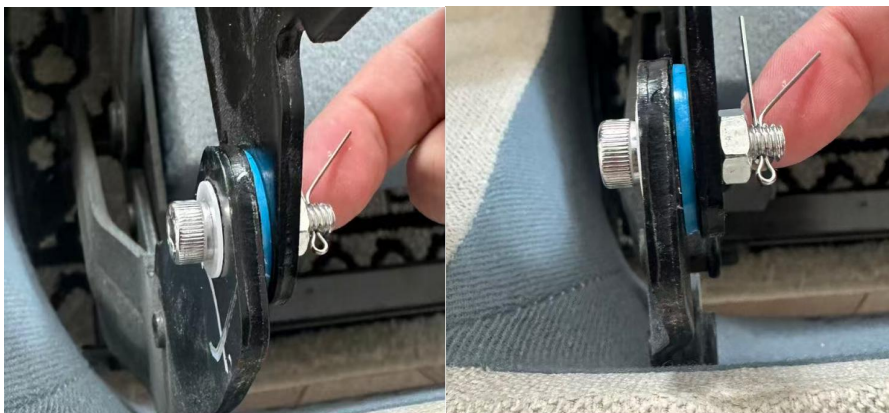
# Installation

To avoid scratches and swallowing parts, please do not install by children!

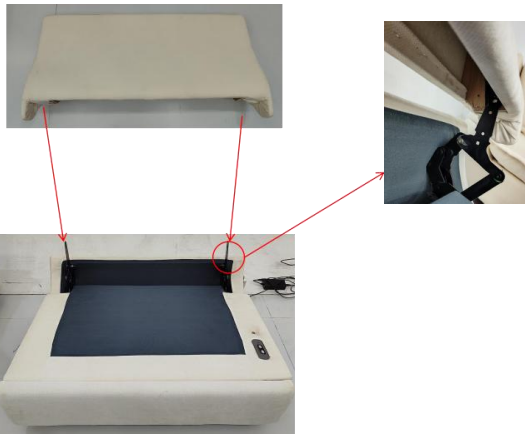
| Hardware List   |              |   | Hardware List   |              |   |
|---|--------------|---|---|--------------|---|
|  | Sofa base    | 1 |  | backrest     | 1 |
|  | Back cushion | 1 |  | Seat cushion | 1 |
|  | armrest      | 1 |  | Legs         | 6 |
| Screw accessory kit   |              | 1 |   |              |   |



The hinge of the unpacked package is in a folded state.  
Open the hinge and place the blue and white spacers



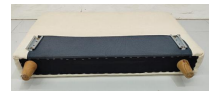
Insert the screw, tighten the nut, insert the wire and bend it, and  
complete the installation



Insert the latch of the sofa base into the slider of the backbest



Secure the legs of the sofa.



Connect the three plugs of the power adapter to the sofa base, wireless charger (on the armrest), and heating module (on the Seat cushion) respectively

1.wireless charger



2.Seat cushion



3.Sofa cover



Insert the pin at the bottom of the armrest into the pin on the sofa base



The positions and installations of the seats, backrests, and armrest cushions have been completed.



Press the wireless charger, and the USB/TYPE-C charging port pops up



Press and hold the switch button for 3 seconds to start heating. Short press the switch button to switch the temperature, then long press the switch button again for 3 seconds to turn off the heating.



Long press the button in front, raise the leg rest and fold down the backrest. Press and hold the button at the back to retract the leg rest and raise the backrest.