

UVI LUNCHBOX LIMITED WARRANTY

WE WANT YOU TO BE COMPLETELY HAPPY WITH YOUR UVI LUNCHBOX.

That's why we've taken great care to ensure its quality and safety. In the unlikely event that something goes wrong with your lunch box within ninety (90) days of purchase (or in accordance with applicable country laws), and we determine the issue is due to faulty workmanship or materials, UVI or replace the product free of charge, within the limitations of this warranty.

If the original model is no longer available, UVI may replace your lunch box with a reconditioned or equivalent model. Please note that refunds are not offered. This limited warranty applies to customers who purchased the lunch box for personal, family, or household use.

WARRANTY SERVICE

If your UVI Lunchbox needs warranty service, please contact Customer Support by visiting www.uvilunchbox.com.

A representative will give you specific instructions on how to arrange for the shipment of your lunch box, at our expense, to one of our authorized product warehouses. Please note that only UVI or its authorized agents are permitted to perform warranty repairs or service on your lunch box.

NON-WARRANTY SERVICE

If UVI or its authorized agents determine that the malfunction or damage to your lunch box is not covered by the warranty, UVI will replace your lunch box only upon payment of the determined replacement charge.

THIS WARRANTY DOES NOT APPLY IF THE PRODUCT IS DAMAGED DUE TO:

- Abuse, misuse, alteration of the lunch box, not following the guidelines mentioned in this user guide, or commercial use.
- Normal wear and tear.
- Modification, or repair made by anyone except by UVI.
- Damage caused by using an incompatible or faulty power adapter or power source.
- Accident, shipment, or anything other than normal household use.

CUSTOMER SUPPORT

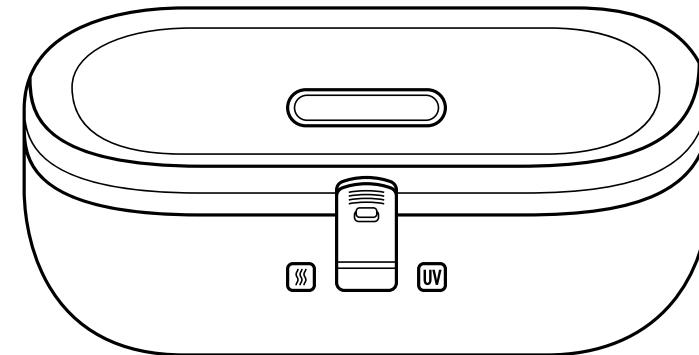
IF YOU HAVE PROBLEMS WITH YOUR PRODUCT, PLEASE REACH OUT TO US USING THE QR CODE BELOW.



Need help? Contact us at support@thefutureproducts.com. We will reach out and get in touch with you within the next 24 hours upon when the concern was filed. If done over the weekend, we will be in touch immediately on the following business day.



INSTRUCTION MANUAL



INDEX

1. Safety Guidelines	3
2. User Instruction	4
3. Product Part List	5
4. User Instruction Diagram	6
5. Cleaning and Maintenance	10
6. Troubleshooting and Handling Methods	11
7. UVI Lunchbox Limited Warranty	12

This manual is applicable to UVI-02 and its colored variations. Please read the manual carefully before using the product. After reading, please keep the manual in case you need to review instructions again.

TROUBLESHOOTING AND HANDLING METHODS

ISSUE DESCRIPTION	POSSIBLE REASON	SOLUTION
The button lights don't light up	Is the power cord properly plugged in on both ends? Is the USB-C adapter generating less than 55W of power?	Ensure that the USB-C cord is properly connected to the lunch box port and to a power source with a minimum output of 55W.
No Heating	Is the heating button light on?	Touch the heating button to turn on the heating indicator (UV button is off)
No Sterilization	Is the UV button on?	Touch the UV button to turn on the sterilization indicator (the heating button is off)
The Lid is hard to open or close	Is the lid closed in place? Is the silicone gasket pulled up?	Press the lid into place Pull up one side of the silicone gasket to exhaust and then press down the cover
The buttons don't react to touch	Are the buttons wet? Are your hands wet?	Dry the buttons Dry your hands

CLEANING AND MAINTENANCE

Please allow this product to cool completely before cleaning or storing it.

1. In order to prevent the formation of permanent stains, please clean the lunchbox after each use with a non-irritating detergent and a soft sponge (or cloth), and dry the surface moisture.
2. The divider can be cleaned with a non-irritating detergent or with warm water.
3. The whole unit can be rinsed with cold or hand warm water, but should not be immersed in water.
4. Do not soak the lid of the lunch box in hot water or rinse it with hot water.
5. This product uses food-grade materials that meet the national standard, and is sensitive to food pigments, especially curry, turmeric, beet juice, amaranth, and such which can permanently stain the lid and lunchbox box body.
6. If you are planning to not use lunch box for a long time, please wash and dry it thoroughly before storing it in the box. (Be careful to keep all accessories)
7. Do not put it in the dishwasher for cleaning, do not put it in a sterilizer to sterilize, and do not put it in a freezer for storage to avoid damage to electronic components.

SAFETY GUIDELINES

Please read the instruction manual carefully before using the product.

1. Caution of Ultraviolet Radiation. Do not look at light directly. Direct UV light can irritate eyes and skin.
2. Do not use it around flammable objects, and do not place it next to objects that are easily deformed with heat.
3. Do not use on wet or on unstable surfaces or places.
4. This product should be kept away from open fire or open heat sources. Do not heat this product directly with fire, cooking surfaces or in a microwave oven.
5. Avoid letting the lunchbox run with no food inside and unplug the power supply after use.
6. Do not touch the product with sharp or rough objects or other corrosive cleaners to avoid damaging the inner liner and surface of the product.
7. Do not immerse key parts such as the main body and power cord in water or other liquids.
8. Do not attempt to repair, disassemble or assemble the main body of this product by yourself.
9. Do not let children use it unattended and keep this product out of the reach of children.
10. If the original power cord is damaged, use a USB-C replacement rated at least 55W. The replacement may be independently sourced, provided it meets the specified requirements.
11. Appliances are not to be used by children with sensory or mental abilities unless they are supervised or instructed in the use of the appliance by someone responsible for their safety. Children should be supervised to ensure that they do not play with this appliance. Cleaning and maintaining appliances should not be done by children without supervision.
12. The heating function of this product is designed to keep food warm for a long time. If the heating is not stopped after 4 hours, the lunch box will automatically shut off the heating function.

USER INSTRUCTION

This product is designed for home use only, and the manufacturer only guarantees household issues.

The manufacturer is not responsible for any consequences and faults caused by commercial use, unsuitability for use or failure to follow the instruction manual or such faults and damages are not covered under warranty.

READ CAREFULLY:

- For the first use, please use a soft cleaning sponge (or cloth) and non-irritating detergent to clean the whole machine. Ensure that the inside and outside are dry before use.
- Add your meals into the lunch box and use the sliding divider as needed.
- Gently remove the silicone gasket (see product part list), put the cover on, and secure the lunch box lid to ensure lunch box is properly sealed.
- Connect one side of the USB-C cord to the input on the right side of the lunch box and the other side to a USB-C power port. Ensure both sides of the cord are properly connected before turning it on. Surface of the lunch box power input must be clean before use.
- To turn on the heat press on the heating button once (see product part list). The heat light will stay on and the UV light will be off. The heating will start.
To turn off the heating button, press the heating button once and both lights will be OFF.
- To clean, do not use sharp objects or any corrosive cleaners. The use of such may cause damage the inner liner and surface of the lunch box.
- The entire body of the product can be washed with water, but the unit should not be completely immersed in water to avoid damage to electronic components.
- Do not soak the lunch box in hot water or rinse with hot water.
- Do not use this product in microwave ovens, ovens, sterilizers and any other electrical appliances.
- Do not put this product in the dishwasher.
- Do not place this product on other heat sources.
- CAUTION: If you plan to carry liquid foods like soups or sauces, please keep the lunch box flat to prevent spills.

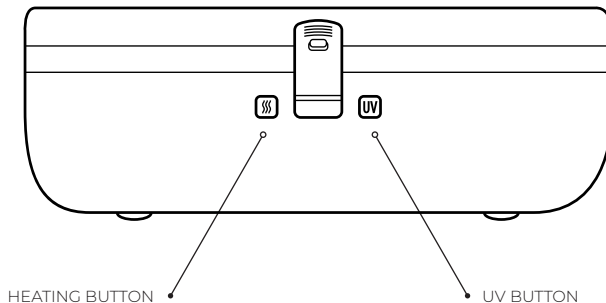
- Reconnect the lunch box to the power supply, the two button indicators will be on. Touch the right UV button and lunch box will automatically start the disinfection function.

Note: The UV button will be on, and the heating button light will be off.

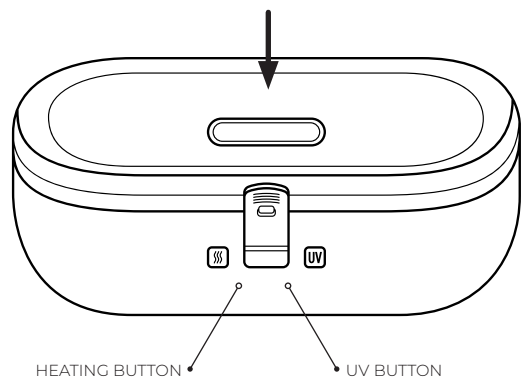
- The automatic disinfection time of the lunch box is 30 minutes. When the time is up, the disinfection function will automatically stop. The two button indicators will light up at the same time. Please unplug the power cord before opening the lid and taking out the tableware.

NOTE

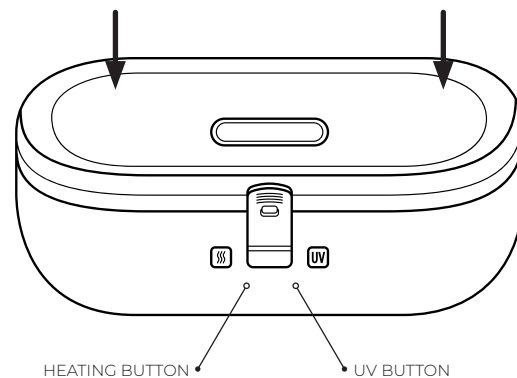
- The heating temperature of different food items will vary, please keep on heating until desired temperature for consumption is reached.
- During and after use, the inner pot is still at high temperature, please do not touch it directly.
- It takes about 25 minutes or less to heat the average food items at room temperature. If food items come out of the refrigerator, the heating time can be up to 45 minutes.
- It is recommended to power up the lunch box and heat in advance.



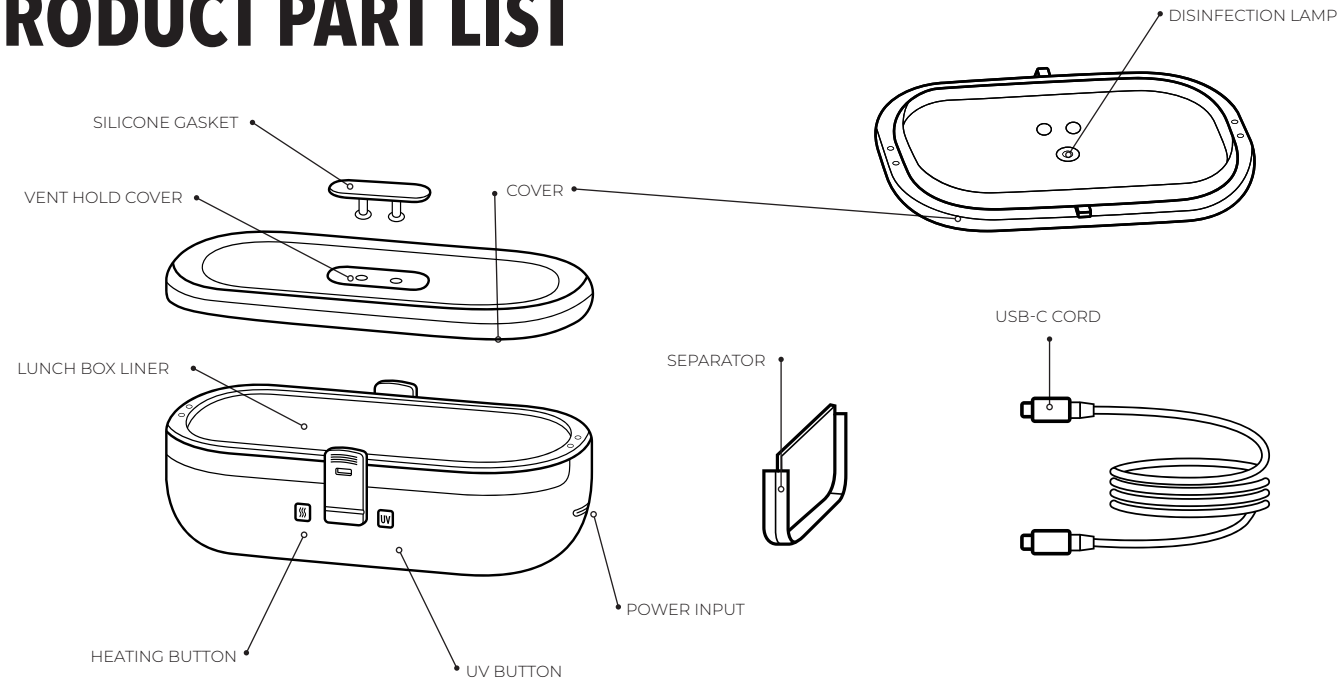
6. Pull up the side of the silicone gasket in the top of the lid to let the high temperature steam out. Open the lid carefully (beware of the high temperature steam) and start enjoying delicious meals.



7. Connect one side of the USB-C cord to the power input at the right side of the lunch box.



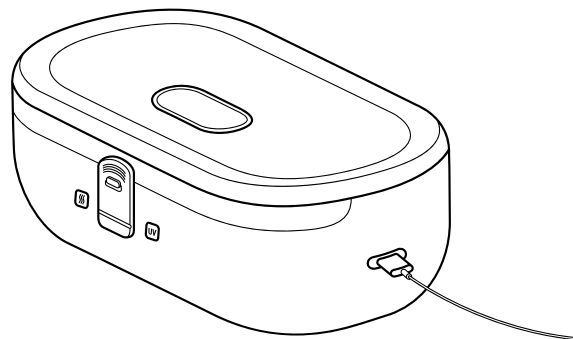
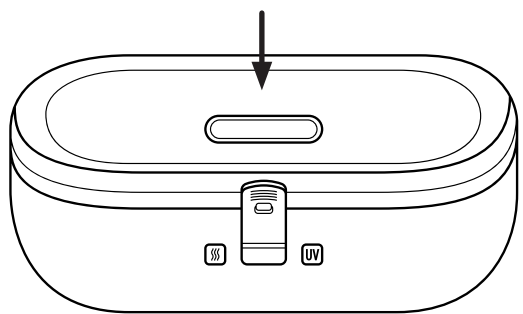
PRODUCT PART LIST



USER INSTRUCTION DIAGRAM

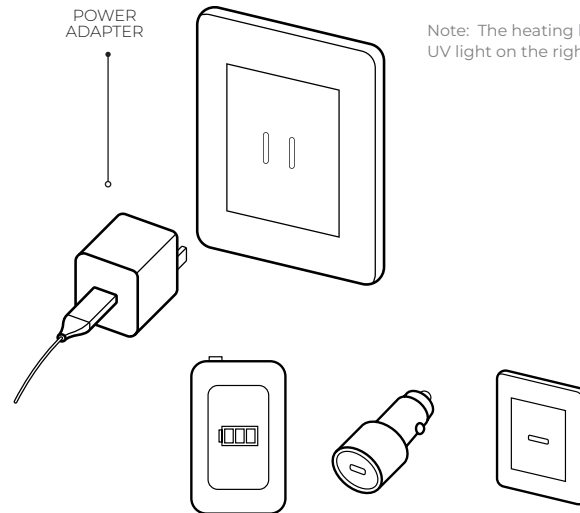
The following pictures are schematic diagrams and are for reference only.

1. Because of high sealing force, before heating the lunch box, gently pull up the silicone gasket in the middle of the top of the lid of the lunch box, so that when heating, the steam is released and the air pressure inside and outside is consistent.
2. Connect one side of the USB-C cord to the power input at the right side of the lunch box.

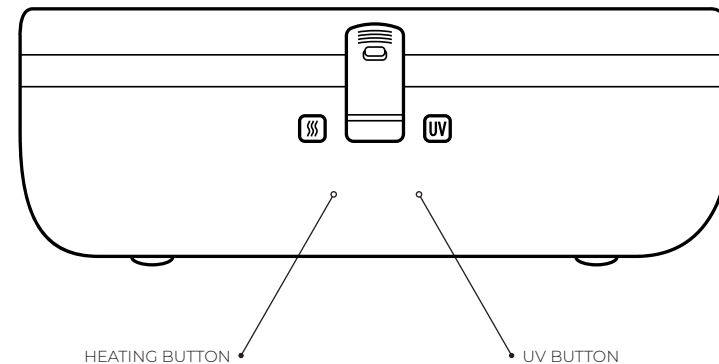


3. Connect the USB-C cord to any compatible power adapter or power source with a USB-C port.
4. Connect to power supply and make sure that the two button indicators on the front of the lunch box are lit up and on. If you want to heat food, touch the heating button on the left.
5. After fully heating your food, touch the heating button once to cancel the heating function (the two indicators are both on), and unplug the power cord.

POWER
ADAPTER



Note: The heating button will light up continuously, and the UV light on the right will turn off.



Note: The USB-C cord may also be connected to other power sources provided that it has a USB-C port and a minimum output of 55W.