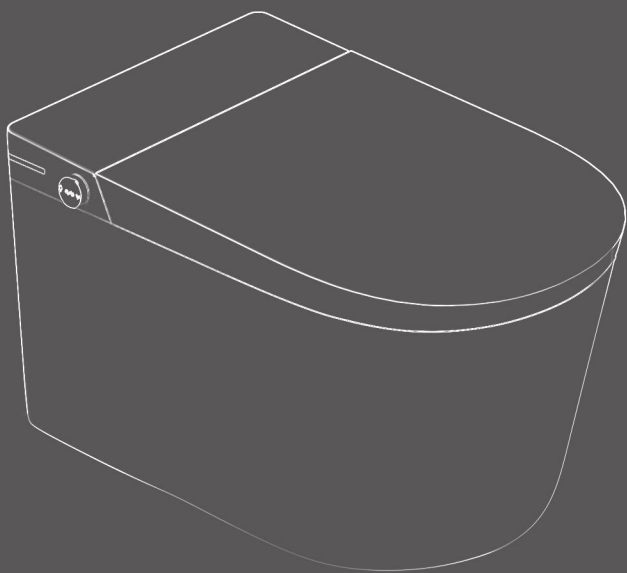


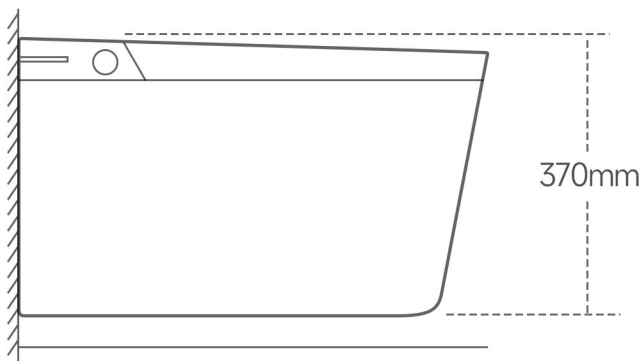
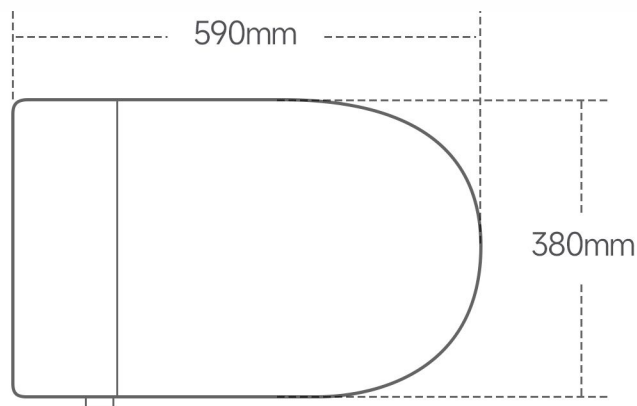
IntelligentToilet
INSTRUCTIONS FOR THE USE OF PRODUCTS



Note: Before installation and use, please read this manual carefully.
Please obey the warnings and regulations inside the product manual and safety directory

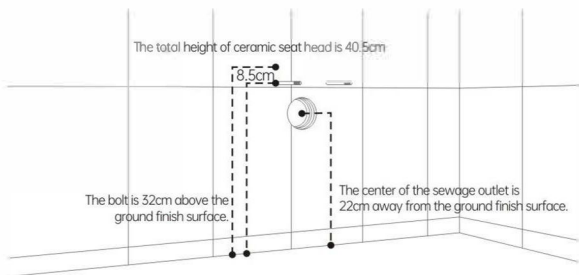
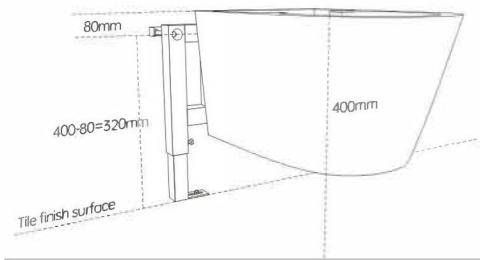
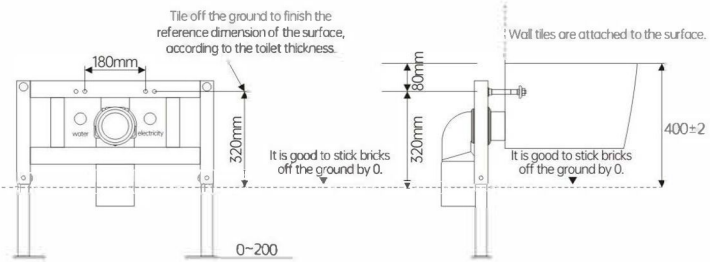
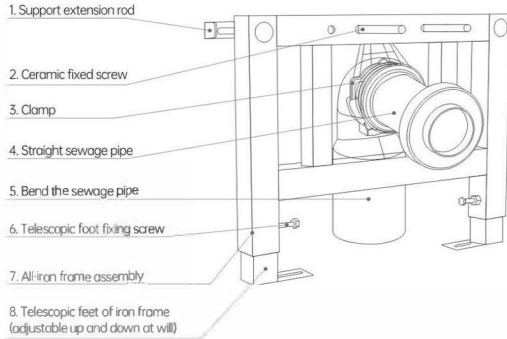
Installation environment and specification confirmation

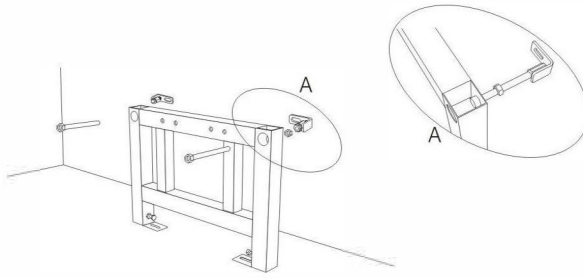
1. Check whether the pit spacing of sewage pipes and the smoothness of toilets meet the installation requirements.
2. Check whether the waterway, water supply pressure and circuit system are in compliance with the installation.
3. While ensuring the space required for installation, please pay attention to whether the surrounding objects (doors, cabinets, etc.) interfere with or affect the installation of the product and the use of functions (such as opening and closing of seat cover and seat ring).
4. If it is necessary to rebuild waterways and circuits, please seek professionals.



Tip: The dimensions, accessories and user interface of this product are schematic diagrams for reference only. Due to the update and upgrade of the product, the physical product may be slightly different from the schematic diagram, so please give priority to the physical product.

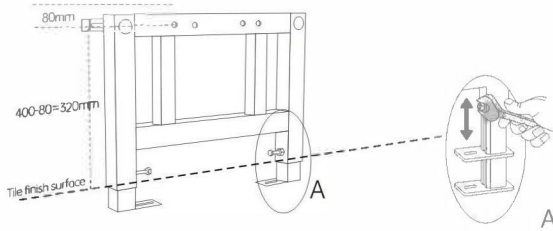
Installation of iron frame into wall



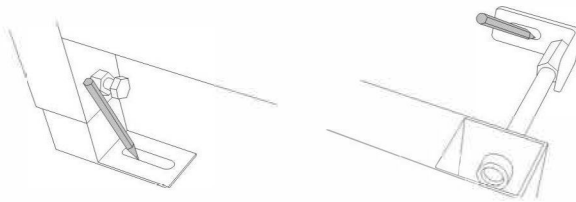


Confirm the installation position

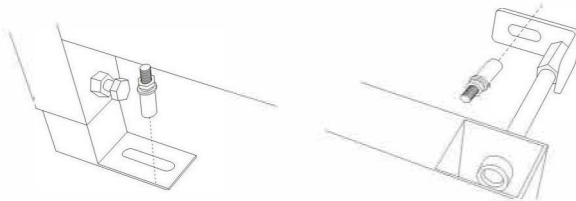
Fasten the wall fixing angle iron, slotted bolt (2 each), external hexagon nut and flat pad (2 each) with the iron frame.



Use a wrench to loosen the screws (2 screws) from the iron frame in the reverse direction, then adjust the required height, measure the height of the mounting hole of the ceramic body by 8cm, calibrate the horizontal and vertical with a spirit level, and then tighten the screws (2 screws) in the clockwise direction.

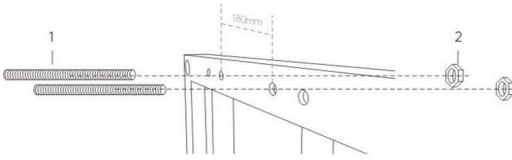


Mark the position of the expansion screw with a pen, then remove the iron frame, and punch holes according to the mark after removal.



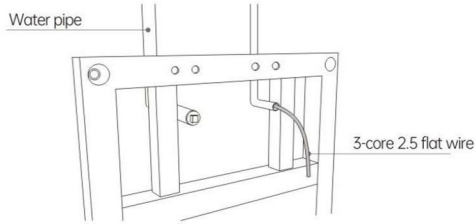
After drilling the hole, move the iron frame back to its original position and drive the expansion screw into the hole.

After fixing, measure the horizontal height, and calibrate the horizontal and vertical with a spirit level.

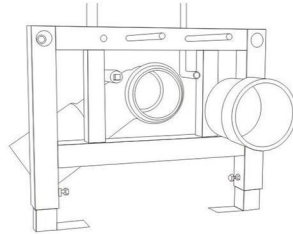


Installation of fixing bolts of iron frame, bolts (Figure 1) and nuts (Figure 2).

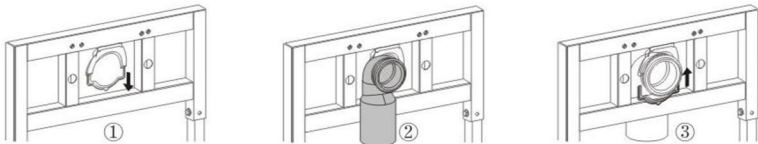
Note: according to the hole spacing of the toilet, choose the iron frame with 180 hole spacing for installation!



Install the tap water pipe and power supply, and the power supply should put a 3-core 2.5-flat wire separately from the electric box.



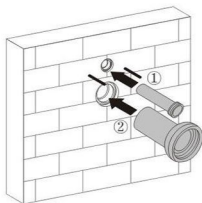
Install the 90-degree sewage pipe and dust cover from the iron frame.



As shown in Figure ①, after the upper clamp of the sewage pipe is removed, the toilet sewage pipe is assembled with the lower clamp of the sewage pipe by selecting an appropriate slot as shown in Figure ②

Note: When the toilet drain pipe is assembled with the sewer pipe, the redundant part of the toilet drain pipe shall be sawed off according to the actual situation.

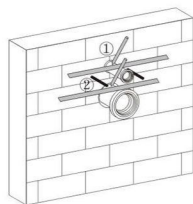
Clip the upper drain pipe into the lower drain pipe, as shown in Figure ③.



As shown in Figure ①, insert the straight water inlet pipe of the toilet into the L pipe of the water tank pasted with the ceramic tile wall.

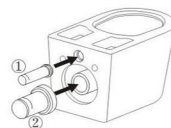
As shown in Figure ②, insert the straight toilet drain pipe into the toilet drain pipe attached to the ceramic tile wall.

Note: Be sure to insert it in place!



Block the toilet water inlet straight pipe at an appropriate position on the vertical board, draw a line with a pencil, and then pull it out, as shown in Figure ①.

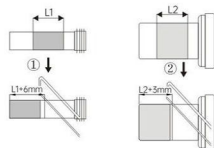
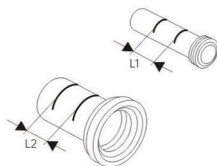
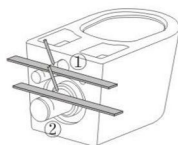
Block the toilet drain pipe at the proper position of the vertical board, draw a line with a pencil, and pull it out after drawing it, as shown in Figure ②.



Insert the toilet water inlet straight pipe and the toilet water inlet ring into the water inlet of the wall-hung toilet as shown in Figure ①.

Insert the toilet blowdown straight pipe and rubber ring into the sewage outlet of the wall-hung toilet as shown in Figure ②.

Note: Be sure to insert it in place!



Draw a line by blocking the pencil in the proper position of the vertical wooden board with the toilet water inlet straight pipe.

After the line is drawn, it needs to be pulled out, as shown in Figure ①.

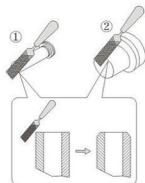
Draw a line by blocking the pencil in the proper position of the vertical wooden board for the straight toilet drain pipe, and then pull it out, as shown in Figure ②.

Draw the assembly line of the toilet water inlet straight pipe, the water tank L pipe and the wall-hung toilet water inlet, and mark the actual size (as the redundant part), as shown in Figure L1.

Draw the assembly lines of the straight toilet drain pipe, the toilet drain pipe and the wall-hung toilet drain outlet, and mark the actual size (as the redundant part), as shown in Figure L2.

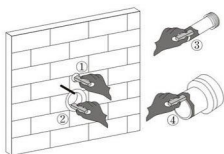
Move the surplus part of the middle size of the toilet water inlet straight pipe to the side opening, and then saw it off after adding 6mm, as shown in Figure ①.

Move the excess part of the middle size of the toilet drain straight pipe to the side mouth, and then saw it off after adding 3mm, as shown in Figure ②.

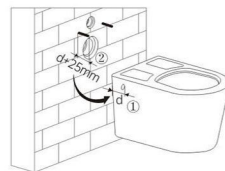


Chamfer the edge of the toilet water inlet straight pipe evenly with a file, as shown in Figure ①.

Chamfer the edge of the straight toilet drain pipe evenly with a file, as shown in Figure ②.

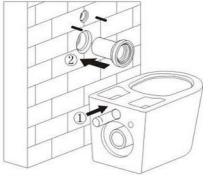


Apply appropriate silicone oil to the seal ring of L pipe of water tank as shown in Figure ①, apron of sewage pipe as shown in Figure ②, straight pipe of toilet water inlet as shown in Figure ③ and straight pipe of toilet sewage as shown in Figure ④.



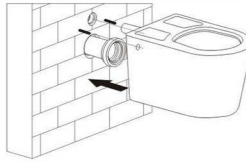
Measure the actual size of the toilet at D as shown in Figure ①.

Install one bolt on each side into the toilet and add 25mm after measuring the D dimension, as shown in Figure ②.

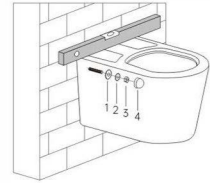


Insert the toilet water inlet straight pipe and the toilet water inlet ring into the water inlet of the wall-hung toilet as shown in Figure ①.

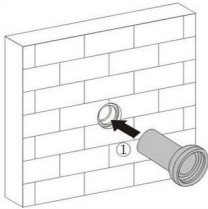
Insert the straight toilet drain pipe into the toilet drain pipe opening on the wall as shown in Figure ②. Note: Be sure to insert it in place!



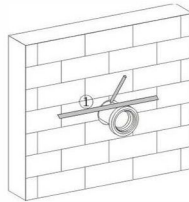
Align the bolts on both sides to the toilet mounting hole, align the toilet water inlet straight pipe to the L pipe of the water tank, align the toilet sewage outlet straight pipe and rubber ring to the toilet sewage outlet before inserting, and make sure to insert them in place.



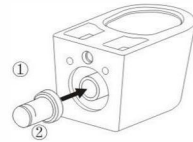
Decorative gasket (1 in the figure), gasket (2 in the figure), nut (3 in the figure), balt decorative sleeve (4 in the figure), and two bolts installed on both sides. Make sure that the toilet is measured (parallel) with a level gauge.



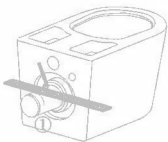
As shown in Figure ②, insert the straight toilet drain pipe into the toilet drain pipe opening on the ceramic tile wall. Note: Be sure to insert it in place!



Block the toilet drain pipe with a vertical wooden board at an appropriate position, draw a line with a pencil, and then pull it out, as shown in Figure ③.



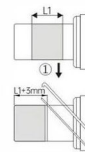
As shown in Figure ④, insert the toilet drain straight pipe and rubber ring into the toilet drain outlet. Note: Be sure to insert it in place!



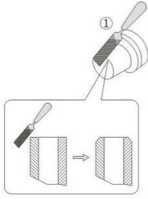
Draw a line by blocking the pencil with a vertical wooden board at an appropriate position, and then pull it out, as shown in Figure ⑤.



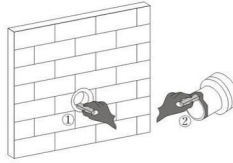
Draw the assembly lines of the straight toilet drain pipe, the toilet drain pipe and the wall-hung toilet drain outlet, and mark the actual size (as the redundant part), as shown in Figure L1.



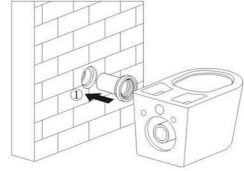
Move the excess part of the middle size of the toilet drain straight pipe to the side mouth, and then saw it off after adding 3mm, as shown in Figure ⑥.



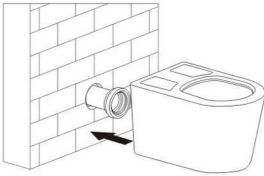
Chamfer the edge of the straight toilet drain pipe evenly with a file, as shown in Figure ①.



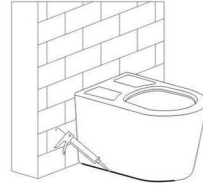
Apply appropriate silicone oil to the apron of the sewage pipe as shown in Figure ① and the straight pipe of the toilet as shown in Figure ②.



Insert the straight toilet drain pipe into the toilet drain pipe opening on the wall as shown in Figure ①.
Note: Be sure to insert it in place!



Align the toilet drain straight pipe and rubber ring to the toilet drain outlet before inserting, and be sure to insert them in place.



After installing the toilet, please don't move the toilet or shake it from side to side, otherwise the sealing between the toilet drain straight pipe and the rubber ring may be damaged, resulting in water leakage. Glass glue is applied to the bottom of the toilet to fix the toilet.

Notes: Once the required nut length is confirmed, trim off any excess.

Safety directory

Please read carefully before installation and use.

Warning: To avoid electric shock.

1. Do not install the product in a wet location.
2. Do not immerse the remote control in water.
3. Do not direct water jets at the product or power plug.

Warning: To prevent burns, electric shock, fire and injury.

1. Children or temperature-insensitive users must be supervised; set seat temperature to low or off.
2. Use only as described in this manual; do not attach unauthorised accessories.
3. Ensure supply cords are not burnt or pinched.
4. Do not operate the product while under the influence of alcohol, drugs or medication.
5. Do not block the product or plumbing.
6. Do not use outdoors.

Please observe the following.

Avoid splashing urine onto the unit.

Unplug the power cord during thunderstorms.

Never hose down the product.

Use only a soft, damp cloth on the seat and cover; avoid dry cloth or toilet paper.

Do not forcefully open or slam the seat or cover; doing so may crack parts or cause malfunction.



Take freeze-protection measures to prevent ice damage.



Keep heaters away from this product. Otherwise, discoloration or malfunction may occur.



Safety Caution


Note: please cautiously read before using

Please read carefully before using. The cautions listed here are related to safety and please follow. 

This product is an electrical product. Please do not install it in a place where it is easy to be splashed by water or high humidity. When using in the bathroom, please install a vent to keep good air flow in the bathroom.

The socket for power distribution should be set as follows





- The gearing position of electric outlet pleases to give examples 0.3 min the ground above, and leave bathtub as far as possible a little bit farer.
- The back track of electric outlet pleases use a high feeling and rapid type electric leakage switch(the sum certainly responds the electric current 15 mA following) or use to insulate the transformer 1.5 KVA above, the 3 KVA is following)carry on a protection.

 The product connects a ground of line to carry on to connect a ground of processing, if has never carried on to connect a ground of processing, may arouses to get an electric shock.

Note: the grounding treatment mentioned here means that the grounding resistance is below 100Ω, and the grounding wires of the switchboard shall be copper wires with a diameter of more than 1.6mm.

While using in the bathroom please confirm the power plug have already used silica gel to carry on a waterproof processing.

Examples and illustrations of ICONS

		It is not feasible (prohibited). The image on the left shows (disassembly is prohibited).
		Represents something that must be (enforced).The left-hand diagram shows (must comply).

Notice heat burn

- Please turn the seat temperature down or off when sitting on the toilet for a long time.
- Please set the temperature to room temperature when the following persons use the seat to dry gently.

- Children, the elderly, people who are ill or have disabilities.
- People who take sedatives, are intoxicated or are severely fatigued.

Do not use any power source other than AC 220V/110V

- It may start a fire

Keep cigarettes and other fire kindling away from the product

- It may start a fire

Do not use loose and unstable power sockets

- It may cause fire or electric shock

Please don't sprinkle water or rinse on product essence or the power plug.

- May arouse a fire or get an electric shock
- May cause toilet break, damage or indoor seepage.

When long time didn't use, please pull out the power plug.

- For safety, please pull out the power plug
- For re-use, please drain water for one minute before use.

Please do not flush other items except for urine and feces

- May cause then block; sewage outside overflows.

Do not unplug the power plug with wet hands

- It may cause electric shock

Do not distort or damage the water inlet

- It may cause a leak



Must obey



Prohibit

Stop using the unit immediately if it breaks down

If any of the following occur, unplug the unit and close the inlet stop valve.

- Leakage, cracks, abnormal noise, odour, overheating or clogging.

- If continued under the condition of failure, it may cause fire, electric shock or indoor seepage problems

Do not disassemble, repair or transform the product without permission

- It may cause a fire or electric shock

Do not install this product in damp places such as bathrooms

- It may cause a fire or electric shock

Do not damage the power cord or seat cable.

- Do not pull, modify, heat, or forcibly bend.

- Keep heavy objects off the power cord and seat cable.

- May cause fire, electric shock or short circuit. If the power supply is damaged, please contact a professional for repair.

Never use extension cords—risk of fire or shock.

- Do not connect wires or use extension cords, which may cause fire and electric shock.

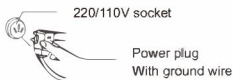
Do not use unhealthy water

- May cause skin irritation and other problems

First use of the intelligent toilet please follow the instructions to text

Note: To ensure the normal use of the product, please follow the instructions below.

- 1.Insert the power plug into the AC 220 V/110 V socket
- 2.Please confirm whether the indicator of the digital display panel is lit
- 3.Confirm whether the inlet valve is open
- 4.Check that the hose between the wall stop valve and the toilet inlet is properly connected.



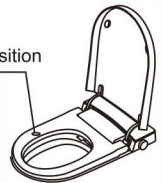
1. Unscrew the screws, then remove the cover
2. Connect the air pipe and water-supply hose of the tank to the ceramic toilet.

Caution-Confirmed matters before using

- 1.Check whether the spray nozzle and water pipe leak,dry all parts of the water pipe and check with a dry tissue.
- 2.Press on the seat sensor—an audible beep should be heard.
- 3.Check whether cleaning, drying, automatic deodorization and automatic flushing work correctly.
- 4.Check that the seat & cover damping operates smoothly.

Check the functions of cleaning, drying and automatic deodorization, make sure the sensor is on.When cleaning, cover the nozzle to prevent splashing.

Seating sensing position



Warning - Be sure to firmly connect ground wires

















The power plug of this product is a three-phase plug (with ground wire). There is a danger of electric shock when there is a fault or leakage of electricity. If there is no ground plug in the socket, consult with the electrical installation company. Do not use power supply other than AC 220V/110V, wire the unit according to local codes.

Using the wrong power supply can easily cause fire

- 1.Switch foot-radar mode: press "Cover" on the remote for 5 s.
- 2.Enable / disable seat-leave flush: press "Auto Flush" for 5 s.

Instructions for remote control

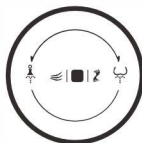
Note: Please read the following carefully before use

<p>REAR / MOVE </p> <p>Rear cleansing (oscillating spray)</p>	<p>FRONT / MOVE </p> <p>Feminine cleansing (oscillating spray)</p>	<p>POWER </p> <p>Power on / off</p>
<p>FLUSH </p> <p>Instant flush</p>	<p>AIR DRY </p> <p>Warm-air drying – auto stops after 2 min while seated</p>	<p>AIR TEMP </p> <p>Drying-air temperature (4 levels: room → ≈ 45 → 50 → 55 °C)</p>
<p>WATER TEMP </p> <p>Water temperature (4 levels: room → 34 → 37 → 40 °C)</p>	<p>SEAT TEMP </p> <p>Seat temperature (4 levels: room → 34 → 37 → 40 °C)</p>	<p>STOP </p> <p>Stop current operation (wash / dry / etc.)</p>
<p>CLEANING HEIGHTEN </p> <p>Cleaning pressure – weak to max (4 steps)</p>	<p>FORWARD </p> <p>Move nozzle forward / back (manual position)</p>	<p>ENERGY SAVING </p> <p>Energy-save mode – indicator off smart standby</p>
<p>NIGHT LIGHT </p> <p>Night-light on / off (works when unit is powered)</p>	<p>NOZZLE CLEANING </p> <p>Nozzle selfclean (extends & rinses itself)</p>	<p>Foam Shield Function</p> <ul style="list-style-type: none"> • Factory Default Setting: Generates foam upon seating. • To Toggle Auto-Foam on Seat Detection: Press and hold the Dry button (long beep: ON, short beep: OFF). • For Manual Foam Generation: Press and hold the Self-Cleaning button on the remote control.
<p>COVER </p> <p>Open / close lid (press again to close)</p>	<p>SEAT </p> <p>Open / close seat ring (press again to close)</p>	

Remote Control Pairing Procedure

Turn the side knob to the Rear Cleansing position and hold it for 3 seconds; the unit will emit a "beep" and enter pairing mode. Within 3 seconds press any button on the remote control; a second "beep" indicates successful pairing.

Side-knob Functions



For models with the compact remote only

Power on/off: press and hold knob for ≥ 3 s
 Rear cleansing: when seated, turn knob forward
 Feminine cleansing: when seated, turn knob backward
 Stop: press knob once
 Flush: press knob once while not seated
 Warm-air drying: press knob once while seated
 Ambient light on/off: while not seated, turn knob backward and hold for ≥ 3 s

Remote Control Instruction Manual



1. Display the current temperature of the seat .

2. Short-press the " - " button, the seat temperature setting will decrease by one level.

3. Short-press the " + " button, the seat temperature setting will increase by one level.

4. Short-press the "FLUSH" button, the toilet flushes.

5. Short-press the "COVER" button, Open/Close the cover.

6. Short-press the "SEAT" button, Open/Close the seat.

7. Short-press the "LIGHT" button, On or Off the night light.

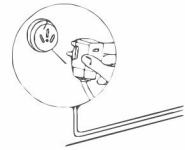
8. Press the "FLUSH"+ "LIGHT" for a long time to switch between temperature display (Fahrenheit or Celsius).

Daily cleaning and maintenance

UNPLUG THE UNIT AND SWITCH OFF THE POWER BEFORE CLEANING OR MAINTENANCE.

Smart-toilet cleaning & maintenance

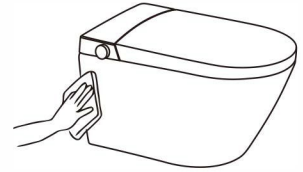
- Wipe all exterior surfaces with a soft, water-dampened cloth only.
- Remove spills promptly; dried soil is harder to clean.
- An occasional damp wipe reduces static build-up that attracts dust.



Unplug the power supply before maintenance

Cleaning and maintenance of spray head

- If there is dirt in the nozzle. Please clean it with a small brush such as a toothbrush.
- Do not stretch and bend the spray head.



Must obey

Caution: If the plug or cord is cracked damp or damaged stop using the product immediately—risk of fire or electric shock.

FAQ & Troubleshooting

Fault Symptom (image)	Likely Cause	What to do
Product unavailable	Loose power plug/socket	Re-seat plug; press RESET on the leakage-protection plug.
No spray water	No incoming water	Restore water supply.
	Shut-off(angle)valve closed	Open angle valve fully.
	Inlet filter blocked	Rinse or replace filter cartridge.
	Kinked inlet hose	Straighten hose.
Weak / slow spray	Pressure set to minimum	Increase pressure via remote.
	Inlet filter blocked	Clean or replace filter.
Spray pattern erratic	Temporary software glitch	Unplug 1 min, reconnect.
Water temperature too low	Temp set low or at room	Raise temperature in menu.
	Hot-cold massage mode ON	Turn off massage function.
Dripping after wash	Solenoid valve fault	Contact authorised service technician.

Fault Symptom	Fault Symptom	Fault Symptom
Remote mis-operation	Low battery	Replace battery
Drying / seat temp too low / no heat	Temp set too low OR power-saving ON	Raise temp or disable power-save
Seat / cover drops too fast	Damaged damper OR hard object under seat	Remove object; if still fast, contact a qualified technician
Cannot start cleansing	Sensor area blocked OR power was lost	Re-position body; unplug 1 min, reconnect
Seat / cover won't open / close	Auto-damper fault	Unplug 1 min, retry; otherwise contact a qualified technician
Weak flush / not clean	Filter clogged OR hose kinked OR S.bend blocked	Clean filter; straighten hose; clear S-bend
Siphon flush weak (pressure OK)	Air leak at outlet OR flush valve fault	Contact a qualified technician
Drips after washing	Flush valve failure	Contact a qualified technician

Product standard

Rated voltage	AC 220 V +10 %, 50 Hz (UK/EU); AC 110 V +10 %, 60 Hz (US/CA/MX)
Working Pressure (in-wall cistern)	Working Pressure: 0.07-0.75 Mpa; Max. Static 1.2 Mpa
Working Pressure (U-shape tank or Tankless)	Working Pressure: 0.07-0.75 Mpa; Max. Static 1.0 Mpa
Water temperature	5°C-40°C(41°F-104°F)