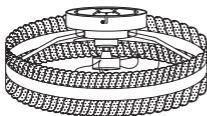
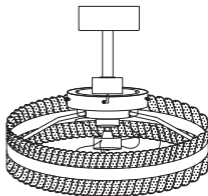


# USER MANUAL

Ceiling Fan Light



Ceiling Mount Installation



Pendant Mount Installation

**PARTS FOR REMOTE CONTROL BRACKET**



Remote Control\*1



Bracket\*1



Expansion rubber plug\*2pcs



ST3\*25 Screw\*2pcs

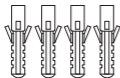
**PARTS FOR CEILING BRACKET**



Washer \*2pcs



Nuts Cap \*3pcs



Expansion rubber plug \*4pcs



ST4\*35 Screw \*4pcs



5/32\*25 Screw\*2pcs

## ADDITIONAL ACCESSORIES



1x Ceiling Bracket



1x Downrod Ball



1x 10inch Downrod



1x 5inch Downrod



1x Canopy



1x Upper decorative cover



1x Lower decorative cover

## IMPORTANT SAFETY INSTRUCTIONS

<b>Pre-Installation Preparation</b>	<ul style="list-style-type: none"><li>• Ensure the mobile device is running iOS 17 or later (iOS) or Android 12 or later (Android). Connect to a 2.4GHz Wi-Fi network; 5GHz networks are not supported.</li></ul>
<b>Electrical Safety</b>	<ul style="list-style-type: none"><li>• Always turn off power before installing or servicing the fan. The fan must be installed in a circuit with a wall-mounted isolation switch. Use only replacement parts recommended by the manufacturer. Read all instructions and safety information before installation. Disconnect power, remove fuses, or turn off circuit breakers before installation.</li></ul>
<b>Physical Safety</b>	<ul style="list-style-type: none"><li>• Mount the fan directly to structural framing or a junction box labeled acceptable for fan support (minimum 35 lbs / 15.9 kg).</li><li>• Do not bend blade arms during installation. Keep objects away from rotating blades.</li><li>• Chemical Burn Hazard: Keep batteries secure and out of children's reach.</li></ul>
<b>Usage &amp; Maintenance</b>	<ul style="list-style-type: none"><li>• Supervise children when using the appliance. Children aged 8+ and individuals with reduced capabilities require guidance.</li><li>• Supervise children during cleaning/maintenance.</li><li>• Do not use solid-state fan speed controls or rheostats.</li></ul>
<b>Compliance</b>	<ul style="list-style-type: none"><li>• Ensure electrical connections comply with local laws and the National Electrical Code (NEC). Hire a qualified electrician if unfamiliar with wiring (or consult DIY manuals). Install in a location with unobstructed blade rotation and at least 7 feet above the floor. Use a metal junction box secured directly to the building structure to support the fan's weight (minimum 35 lbs).</li></ul>
<b>Professional Installation</b>	<ul style="list-style-type: none"><li>• Hire a qualified electrician for installation if unfamiliar with wiring. Secure all connections to prevent fan detachment.</li></ul>

This table organizes critical safety information into clear, concise categories (e.g., compliance with U.S. electrical codes, child safety, and professional guidance) to help users prioritize and follow instructions effectively.

<b>Fan Doesn't Work</b>	<ul style="list-style-type: none"><li>• Make sure the power switch is on. Check the circuit breaker to ensure the power is turned on. Make sure the blades spin freely. Turn off power from the circuit breaker, then loosen the canopy and check all the connections according to the wiring diagram.</li></ul>
<b>Excessive</b>	<ul style="list-style-type: none"><li>• Make sure the blades are properly installed on the blade iron posts. Turn the power off, support the fan carefully, and check that the hanger ball is properly seated</li></ul>
<b>Remote Control</b>	<ul style="list-style-type: none"><li>• Re-pair the remote control, Power cycle the fan by toggling the wall switch (or circuit breaker if needed). Within 10s, Press the switch button twice and the light will breath or blink.</li></ul>
<b>Remote Only Works Close to Fan</b>	<ul style="list-style-type: none"><li>• Change battery</li></ul>
<b>Noisy Operation</b>	<ul style="list-style-type: none"><li>• Make sure the blades are properly installed. Check to see if any of the blades are cracked, If so, replace all of the blades.</li></ul>

## **If your problem is not listed or still persists, please contact our Customer Support**

- Lumary's products don't recommend that you use dimmers because flicker may occur during use.
- Make sure your mobile device meets the following requirements:  
For iOS: Ensure your device is running iOS 17 or higher.  
For Android: Ensure your device is running Android 12 or higher.
- Ensure that you are connecting to a 2.4GHz Wi-Fi network as devices are not compatible with 5GHz networks.

## BEFORE INSTALLATION

### TOOLS NEEDED (NOT INCLUDED)



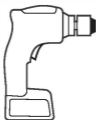
Ladder



Screwdriver



Wire Stripper



Drill



9/64" Drill Bit



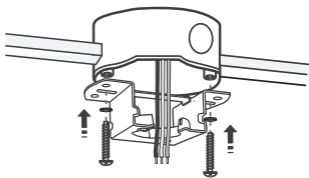
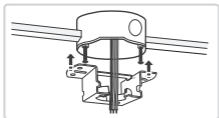
It is recommended to have a partner when installing the ceiling fan.

1. We recommend having two people work together for a smoother and safer installation.
2. To enhance safety, use a hook to temporarily hang the fixture by its edge or secure the fan with a safety rope during installation. This precaution helps prevent accidental drops that could cause damage to the fan or surrounding objects. If you need assistance during installation, feel free to reach out to our customer support team at we're here to help.

## PENDANT MOUNT INSTALLATION



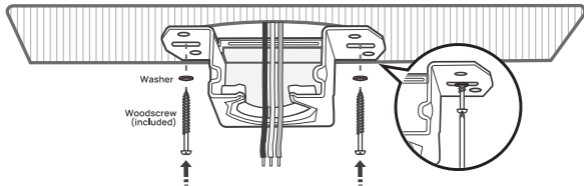
**WARNING:** To avoid possible electrical shock, before installing your ceiling fan, disconnect the power by turning off the circuit breakers to the outlet box associated with the wall switch location.



### Option 1:

Use machine screws (provided with outlet box) when: Securing to existing ceiling fan-rated outlet box.

Make sure it is securely installed and is acceptable for fan support of 15.9 kg (35 lbs) or less.



### Option 2:

Use wood screws and washers when:

Securing to support structure with approved electrical outlet box.

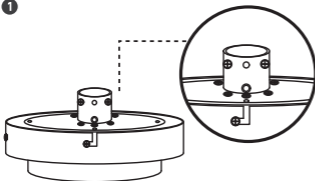
Drill 9/64" pilot holes in Support Structure to aid in securing ceiling bracket.



**! WARNING: FAN FALL HAZARD**  
To prevent **SERIOUS INJURY** or **DEATH**:

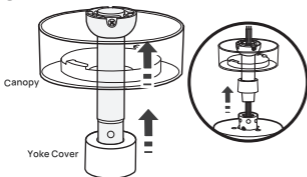
- ALWAYS tighten setscrew with screwdrivers.
- DO NOT hand tighten setscrew.
- CHECK the setscrew is tight using screwdrivers each time you change fan direction.

1



Secure the suspension fittings to the ceiling mount plate with screws.

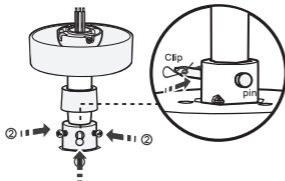
2



Insert the canopy and then the yoke cover to the downrod.

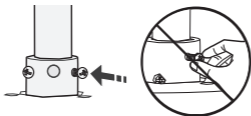
Pass all the wires to one side of the horizontal bar in the downrod to prevent excessive wire tangling.

3



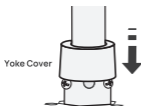
Carefully slide the downrod into the yoke of the motor assembly. Align the holes in the downrod. Carefully re-install the downrod pin and clip.

4



Tighten the setscrew with a screwdriver.

5

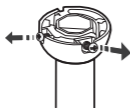


Put down the yoke cover.

**Note:**Please lift the canopy and yoke cover to avoid interference with your installation when you are tightening setscrew.

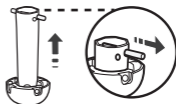
The downrod ball has been pre-installed on the 10inch downrod. If you wish to move it to the 5inch downrod, please follow these steps.

1



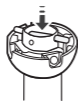
Loosen and remove the two screws on the downrod ball from the 10inch downrod.

2



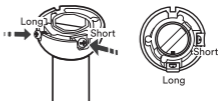
Lift the downrod upwards, then remove the horizontal bar, and detach the downrod ball from the 10inch downrod.

3

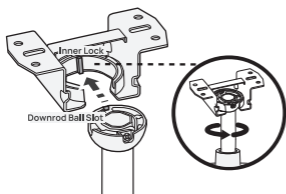


Install the downrod ball onto the 5inch downrod and securely insert the horizontal bar in its designated position.

4



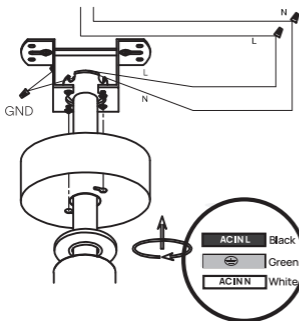
Insert the first perforated long screw tightly, an insert the second short screw tightly.



- 1 Place the downrod ball into the ceiling bracket.

Make sure the **downrod ball slot** matches the **inner lock**.

**Rotate the downrod until it's secured.**



- 2 Connect the white (N) wire from the ceiling to the white wire from the fan.

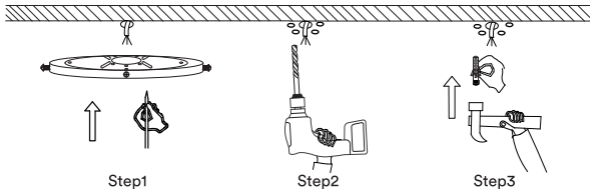
Connect the black (L) wire from the ceiling to the black wire from the fan.

Connect the three grounding wires (green, or bare copper) coming from the ceiling, downrod, and hanging bracket.

- 3 Rotate the canopy and tighten it with screws. Push the decorative cover up against the ceiling plate. All installations are complete. Turn on the power switch to test.

**Note:**Please check if the ceiling fan has been properly installed before use.

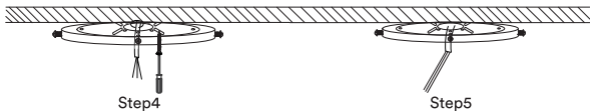
## METHOD A: HARDWIRED CEILING INSTALLATION



**Step1** Remove the mounting plate and position its B side facing the ceiling. Mark the mounting holes on the plate.

**Step2** Drill holes at the marked points using a drill bit.

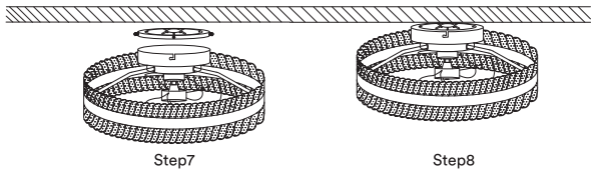
**Step3** Insert the plastic expansion anchors from the accessory kit into the pre-drilled holes.



**Step4** Secure the mounting plate to the ceiling using screws, with the B side facing up.

**Step5** Secure the installation auxiliary rope to the mounting bracket;

**Step6** Before connecting the light fixture wiring, turn off the power supply. Connect the power cables as follows:  
L live wire / N neutral wire / ground wire;



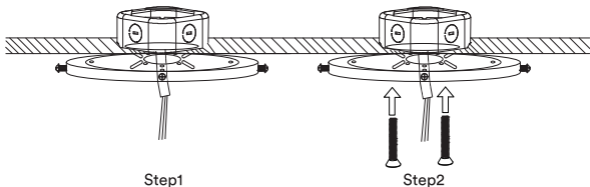
Step7

Step8

**Step7** Rotate the lamp body until the screws on the mounting plate align with the holes on the leftmost hub.

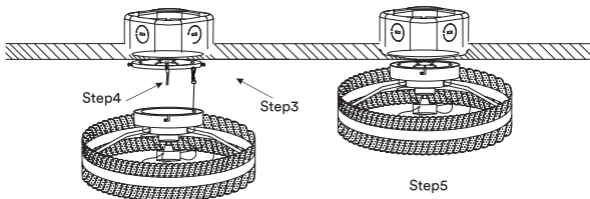
**Step8** Tighten the four screws on the mounting plate to ensure the fixture is securely installed.

## METHOD B: JUNCTION BOX INSTALLATION (COMPATIBLE WITH 2 3/4"-4" J-BOX)



**Step1** Turn off power at the source before installation, and make sure the junction box is securely mounted.

**Step2** Remove the mounting plate. Align the B side with the pre-installed box, rotate to find the mounting holes, and secure with screws.



**Step3** Secure the installation auxiliary rope to the mounting bracket.

**Step4** Connect the power cables as follows: L live wire / N neutral wire / ground wire.

**Step5** Rotate the lamp body until the screws on the mounting plate align with the holes on the leftmost hub.

Tighten the four screws on the mounting plate to ensure the fixture is securely installed.



### **What You Need:**

- A Wi-Fi router supporting the 2.4GHz and 802.11b/g/n bands. 5GHz is not supported.
- A smartphone running iOS or Android.

1. Download the App from the App Store or Google Play.
2. Register an account. (Note: Please select your region and country.)
3. Connect. (NOTE: Product can't connect to 5GHz networks.)

### **Steps:**

1. Turn on your smartphone's Bluetooth;
2. Open the App, In the top corner of the Devices screen, click "+" and select "Add Device" to confirm that the device is paired.
3. Each time the device without distribution network is powered on, confirm the light is breathing or blinking pairing mode; if not, you need to use the switch to reset: on-off-on-off-on;
4. Find the device, choose Wi-Fi and enter password, press "Next". Click "Add", and wait patiently. After that, click "Done", and the device is successfully added to the App.

## Unable to connect the light to App

- Ensure the downlight is powered on.
- Check if your smartphone's Wi-Fi is enabled and connected to a 2.4GHz network (5GHz is not supported).
- Keep your smartphone close to the device during the first-time setup.
- Confirm that the Wi-Fi password entered is correct. Make sure the distance between the device and router is less than 50 feet (15 meters).
- If binding fails, try this method: Use two smartphones — one to create a hotspot and the other to connect to the hotspot and add the device via the App.
- If successful, it may indicate your router settings (MAC filtering or DHCP restrictions) are causing the issue.

## The light lost connection

- Confirm the light is still powered on.
- Check if your home Wi-Fi network is stable.
- Try connecting the light to another phone's hotspot to isolate router issues.
- Ensure your smartphone is within 50 feet of the device.
- Delete the device in "My Devices" in the app, then re-add the light by following on-screen instructions.

## Can I group multiple devices together?

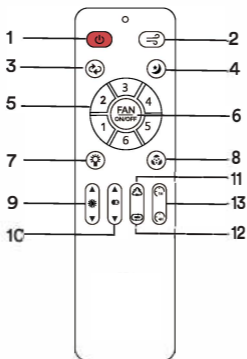
- Yes, you can group multiple lights or devices using:
  - \* Schemes
  - \* Same model
  - \* General (Wi-Fi or Bluetooth devices)
- Grouping functions depend on device type and firmware version.

Name	Ceiling Fan Light
Model	A
Input Voltage	120VAC,60Hz
Wattage	Fan:25W Light:35W
Color Temperature	RGBAI +Tunable White(2700K-6500K )
CRI	90+
Lumens	4600lm
Beam Angle	120°
Fan	1-6 Speeds
Rated Life	25000h

**RoHS**

Contains FCC ID:2ANDL-CB3S

Made in China



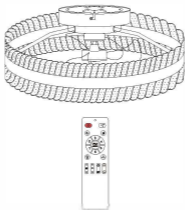
**Note:** The remote control that shipped with your fan is already paired.

- |  |  |
|--|--|
| 1: Turn on/off                                     | 2: Wind mode: nature/soft                                      |
| 3: Fan rotates: forward/ in reverse                | 4: Night light   |
| 5: Fan speed: 1 is the weakest, 6 is the strongest | 6: Fan on/off, Long press 5 seconds to trigger the pairingmode |
| 7: Turn on white color                             | 8: Turn on RGB color   |
| 9: Change brightness                               | 10: Change color temperature                                   |
| 11: Change RGB color                               | 12: Change RGB mode  |
| 13: Countdown Timing 1 Hour/4 Hours                |  |

Our ceiling fan come pre-paired with the remote.

If the remote doesn't control the light, follow the steps below.

## How to Pair the Remote with ceiling fan light?



### 1. Connect to the App:

Power on the light. When it starts blinking, connect it to the App. 2. Pair the Remote:

Turn off the wall switch for 5 seconds, then turn it back on.

Hold the "⏻" button on the remote for 5 seconds.

When the light blinks, pairing is successful.

**Note: If pairing fails, repeat Step 2.**

## How to Reset the ceiling fan light?

Method 1: Wall Switch Reset

Toggle the switch: ON → OFF → ON → OFF → ON

Method 2: Remote Reset

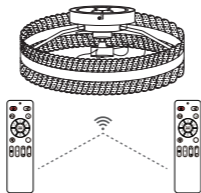
Press the "FAN ON/OFF" button for 5S

Reset Result:


If the light enters pulsing mode, it has been reset and is ready to pair.

If it does not pulse, the reset failed.

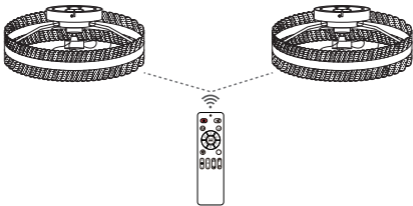
## Installing one fan operating on multiple remote controls




To have multiple remote controls operate one fan, you must pair each additional control to the receiver in the fan, the remote control that shipped with your fan is already paired.

Power cycle the fan by toggling the wall switch (or circuit breaker if needed). Within 10s, Press the **Button**  twice and the light will breath or blink.

## Installing multiple fans operating on a single remote control



To have multiple fans operated by a single remote control, you must pair the remote control to each additional receiver. The receiver that shipped with your fan is already paired to the remote control.






Power cycle the fan by toggling the wall switch (or circuit breaker if needed). Within 10s, Press the **Button**  twice and the light will breath or blink.

This device complies with Part 15 of the FCC Rules. Operation is subject to the following two conditions:

(1) this device may not cause harmful interference, and (2) this device must accept any interference received, including interference that may cause undesired operation. Changes or modifications not expressly approved by the party responsible for compliance could void the user's authority to operate the equipment.

NOTE: This equipment has been tested and found to comply with the limits for a Class B digital device, pursuant to part 15 of the FCC Rules. These limits are designed to provide reasonable protection against harmful interference in a residential installation. This equipment generates uses and can radiate radio frequency energy and, if not installed and used in accordance with the instructions, may cause harmful interference to radio communications. However, there is no guarantee that interference will not occur in a particular installation. If this equipment does cause harmful interference to radio or television reception, which can be determined by turning the equipment off and on, the user is encouraged to try to correct the interference by one or more of the following measures:

- Reorient or relocate the receiving antenna.
- Increase the separation between the equipment and receiver.
- Connect the equipment into an outlet on a circuit different from that to which the receiver is connected.
- Consult the dealer or an experienced radio/TV technician for help.

	<p><b>Adjustable Brightness &amp; Color Temp 2700K-6500K, 0-100% Dimming</b> Wake up to energizing cool light (6500K) for morning productivity. Wind down with warm amber (2700K) for cozy movie nights—no extra lamps needed.</p>
	<p><b>RGBAI &amp; RGB Mode</b> Transform your space instantly: vibrant rainbow for parties, soothing purple for yoga, or cinematic blue for Netflix marathons. Ditch boring single-color bulbs.</p>
	<p><b>Smart Timer</b> Auto-off lights at bedtime to save energy. Simulate sunrise to wake up gently—no more jarring alarms or wasted electricity.</p>
	<p><b>Music Rhythm Sync</b> Lights dance to your playlist! Throw a TikTok-worthy dance party or sync with white noise for meditation—your room becomes an extension of the vibe.</p>
	<p><b>Voice Control (Alexa/Google)</b> "Alexa, dim the lights!" Control hands-free while cooking, working, or carrying groceries. Check lights remotely on vacation—peace of mind unlocked.</p>

**24**

HOURS

Quick Response

### Quick Response

If there is any problem please check the Troubleshooting page . When you could not fix this, please contact us after-sale email, we will respond within 24 hours.

**30**

DATE

Hassle-Free

### Hassle-Free

After the purchase, if there any quality with devices, we can offer free return or replacement.

**2-YEAR  
WARRANTY**



### Friendly Reminder

Please rest assured that our service aim is to make customers 100% satisfied.  
If there is any problem, please contact us as soon as possible, we will not let you down.