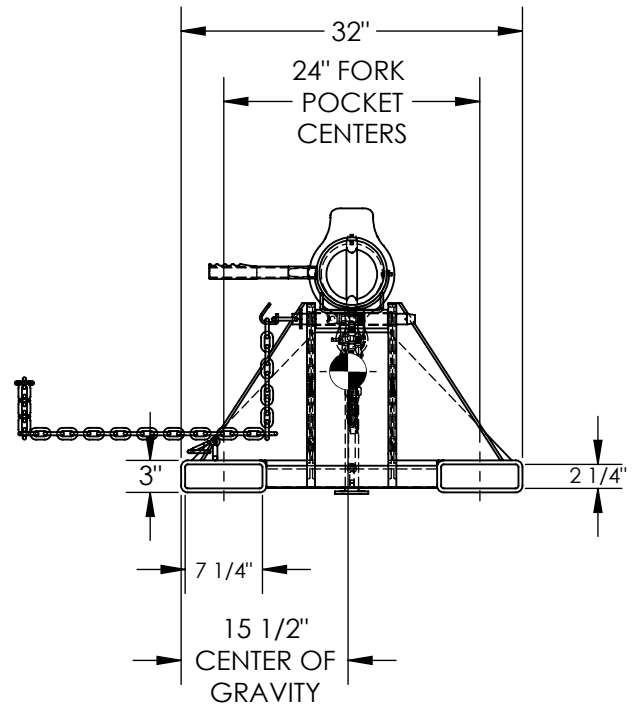
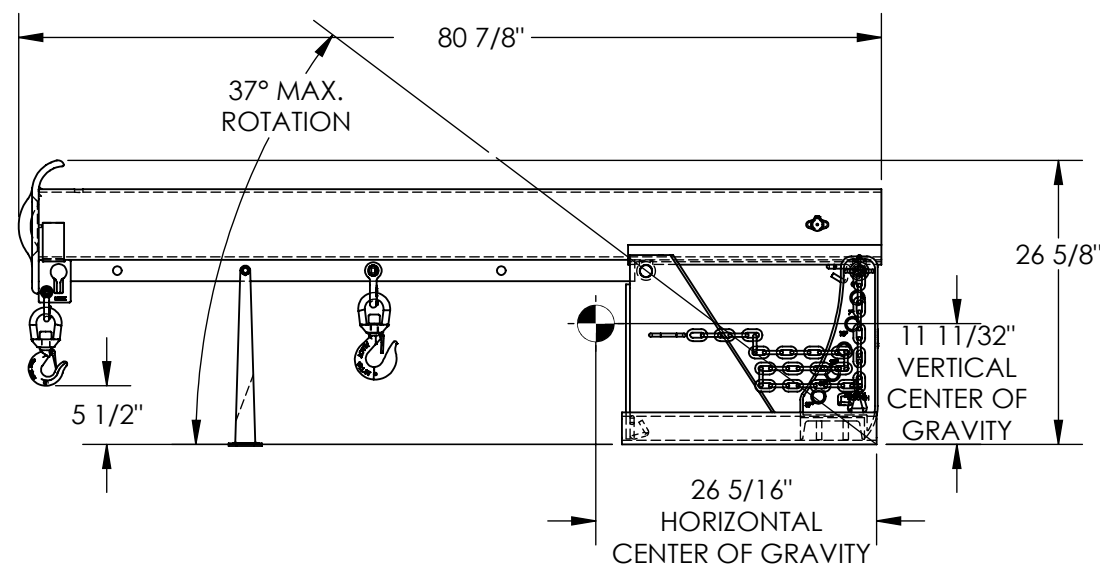


APPROX WEIGHT: 398.39 lbs.
DOES NOT INCLUDE WEIGHT OF POWER OR PACKAGING!!!

LIFT MASTER BOOM, ORBIT NON-TELESCOPING BOOM-LM-OBNT-6-24

*** ANY ADDITIONS, DELETIONS, OR OMISSIONS MUST BE CORRECTED ON THIS DRAWING AS THIS DRAWING WILL BE CONSIDERED ALL INCLUSIVE ***
ALL GRAPHICS PROVIDED ARE FOR REFERENCE ONLY. IF CERTAIN DIMENSIONS ARE CRITICAL PLEASE VERIFY THOSE DIMENSIONS WITH YOUR SALESPERSON



*--MAXIMUM SINGLE HOOK CAPACITIES

DISTANCE	36"	48"	60"	72"	78"
CAPACITY	6000	5000	4500	4000	3500

STANDARD FEATURES

MODEL NUMBER IS LM-OBNT-6-24
CAPACITY IS 6,000 LBS
MAXIMUM TILT ANGLE IS 37°
OVERALL HEIGHT - 26 5/8"
HEIGHT (MAX TILTED) - 57 3/16"
OVERALL LENGTH - 80 7/8"
OVERALL WIDTH IS 32"
36" MINIMUM HOOK POINT
78" MAXIMUM HOOK POINT
HOOK HEIGHT - 5 1/2"
HOOK HEIGHT (MAX TILTED) - 38 1/4"
USABLE FORK POCKET - 2 1/4"x7 1/4"
24" FORK POCKET CENTERS
TOUGH BAKED IN POWDER COATED BLUE FINISH

APPROX. WEIGHT / LOST LOAD = 398.39
MINIMUM EFFECTIVE THICKNESS = LESS THAN 1"
NEVER EXCEED LOAD CENTER
RATING PER FORKTRUCK
MANUFACTURERS GUIDELINES.
DO NOT USE THIS FORK TRUCK
ATTACHMENT IF LOAD WILL
EXCEED FORK TRUCK MANUFACTURER'S
LOAD CENTER RATING

SPECIAL FEATURES

NONE

DIMENSION TOLERANCE ± 1/4"

APPROVAL	I, THE UNDERSIGNED, AGREE THAT THE PRODUCT AS REPRESENTED SATISFIES DESIGN AND DIMENSION REQUIREMENTS. I ALSO ACKNOWLEDGE MY DUTY TO CONFIRM PRODUCT AND INSTALLATION COMPLIANCE WITH ALL APPLICABLE FEDERAL, STATE AND LOCAL REGULATIONS AND STANDARDS.	
	ANY MODIFIED UNITS ARE NON-RETURNABLE	
	[] As drawn [] As marked	
	Signed: _____ Date: _____	
	Printed Name: _____	
LEAD TIME WILL START UPON RECEIPT OF SIGNED APPROVAL DRAWING		

FOR INTERNAL USE ONLY PROJECT SIGN OFF	
SALES	
ENG.	
FAB.	
POWER	

DISTRIBUTOR'S NAME:		P.O.#
VESTIL MANUFACTURING		X
W.O.#		X
DRAWN BY:	B.NOTHNAGEL	DATE: 7/2/2015
REFERENCE:	X	SCALE: 1:18
QUOTED LEAD TIME:	X	QUOTE # X
FILE NAME:		08-007-136