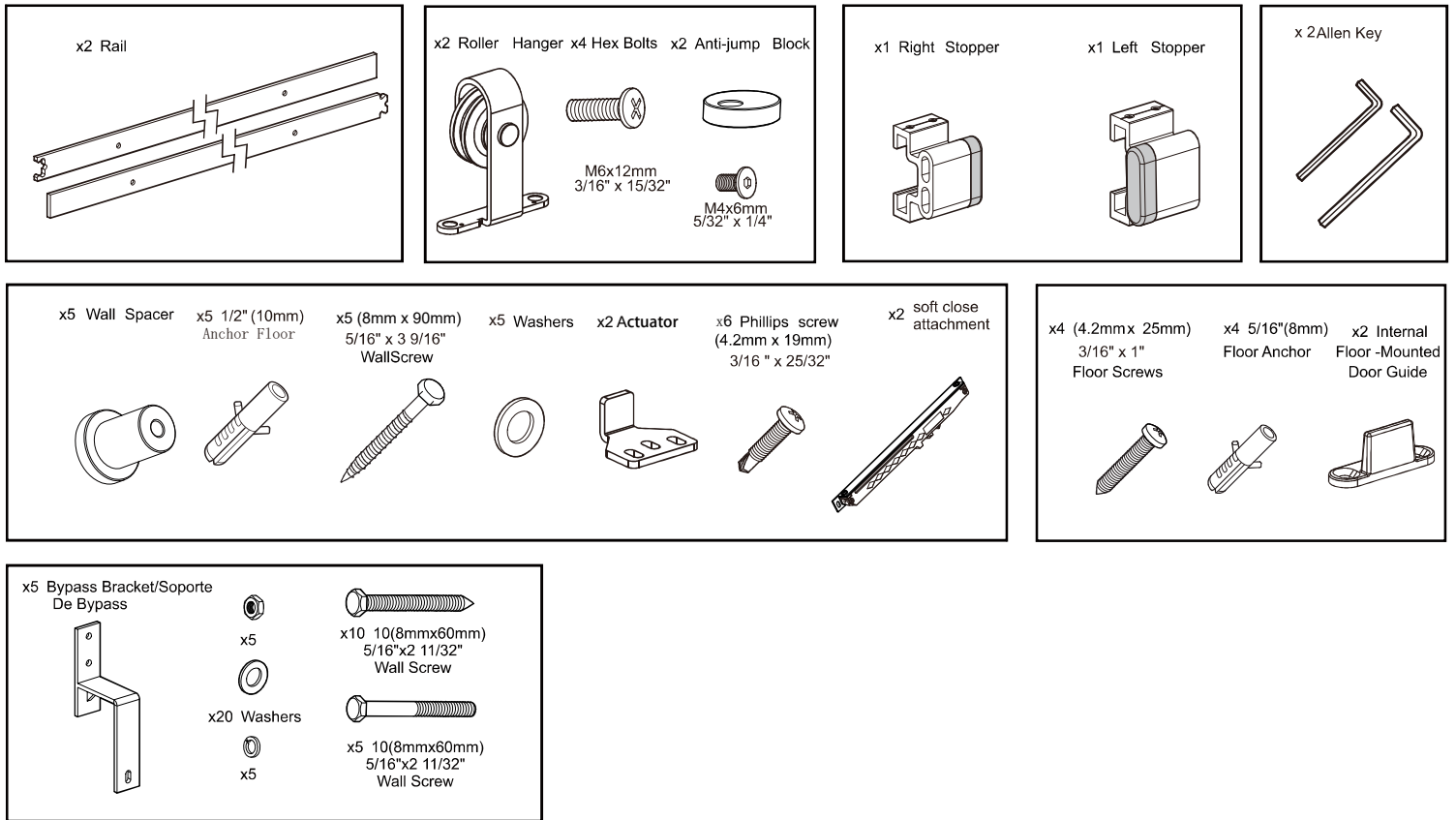


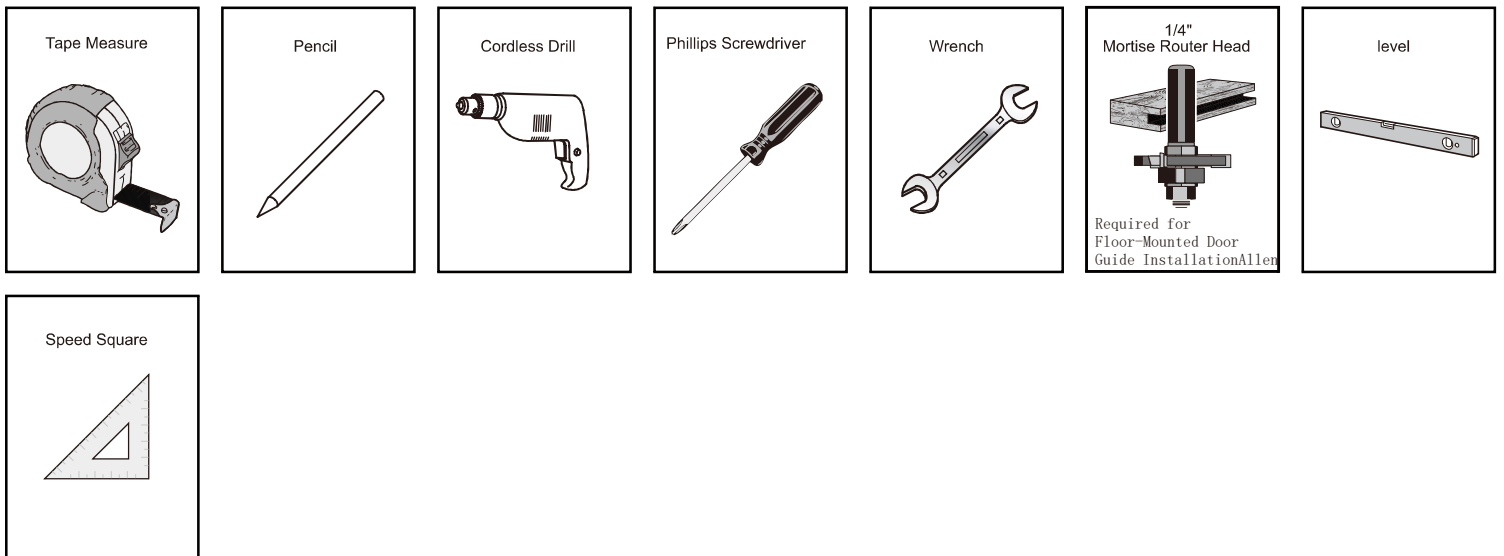
# BARN DOOR HARDWARE KIT WF-TKM02Cx2-BP INSTALLATION GUIDE

## Main Components



To provide feedback on a particular part, please mark it by circling in the instruction manual and kindly send us a photo.

## Tools Required

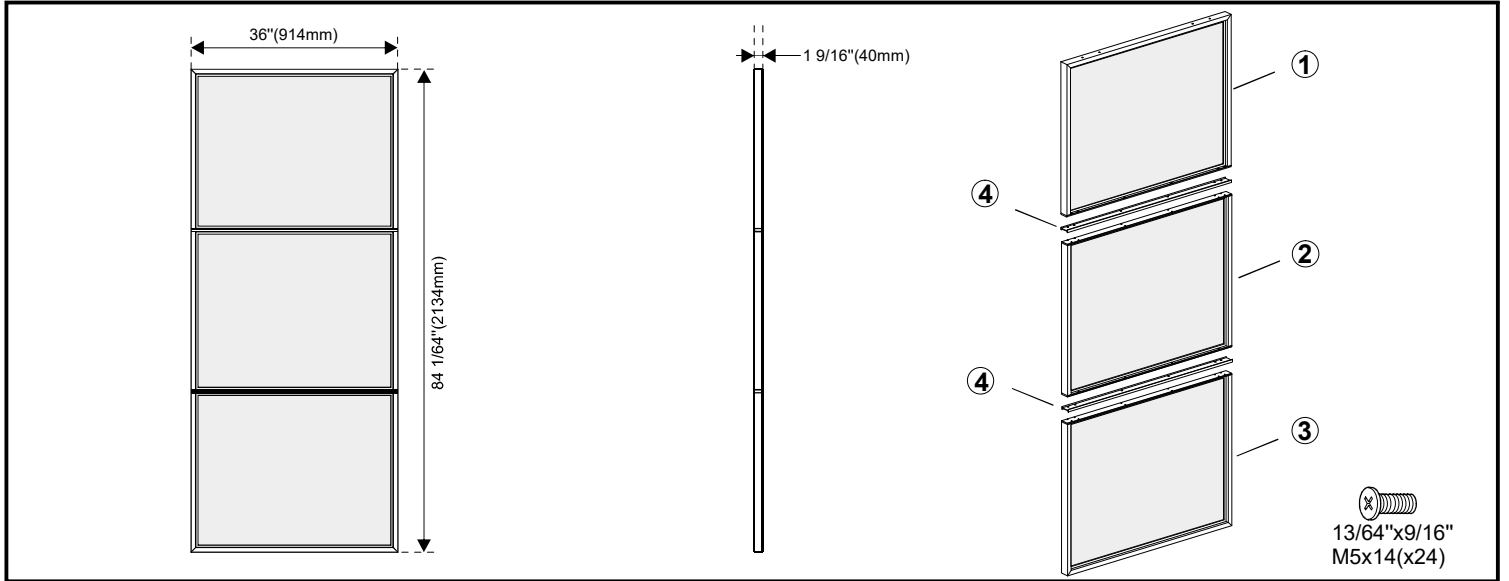


## IMPORTANT: BEFORE YOU BEGIN

IF INSTALLING DIRECTLY INTO A NON-CONCRETE WALL, DO NOT ATTEMPT TO INSTALL THE RAIL SOLELY TO THE DRYWALL OR ANY WALL SURFACE AS THIS MAY NOT SUPPORT THE WEIGHT OF THE RAIL AND MOUNTED DOOR. THE RAIL MUST BE INSTALLED ONTO A PIECE OF SOLID WOOD BLOCKING (SOLD SEPARATELY) USING MOUNTING SCREWS (ALSO SOLD SEPARATELY). ENSURE THE SOLID WOOD BLOCKING IS SECURED INTO THE STRUCTURAL SURFACE. USE A STUD FINDER WHERE NECESSARY TO LOCATE STUDS AND SECURE SAFELY. TYPICAL SOLID WOOD BLOCKING SHOULD BE 8 1/4" x 5 1/2" x 7/8".

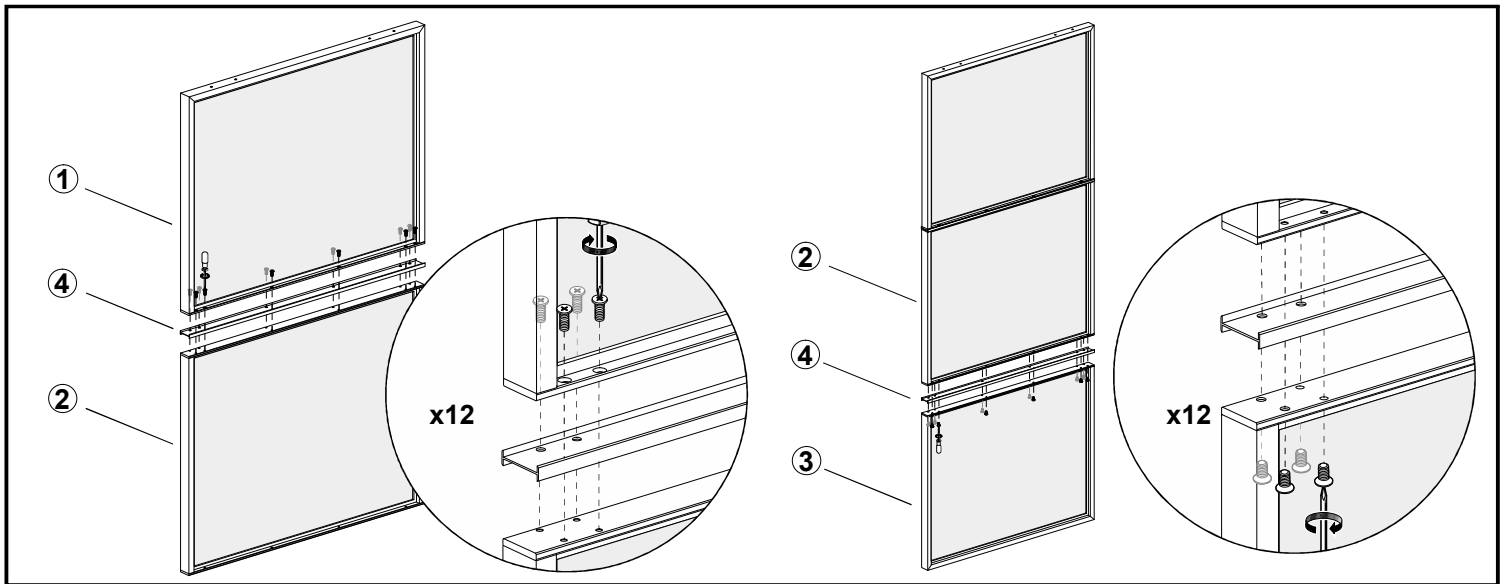
NOTE, SEPARATE BOLTS ARE PROVIDED FOR 13/8" DOORS AND LONGER BOLTS PROVIDED FOR 13/4" DOORS. IF INSTALLING WITH THE INTERNAL FLOOR-MOUNTED DOOR GUIDE, THE DOOR MUST BE MORTISED 1/4" WIDE X 3/4" DEEP CENTRALLY.

# BARN DOOR HARDWARE KIT WF-TKM02Cx2-BP INSTALLATION GUIDE



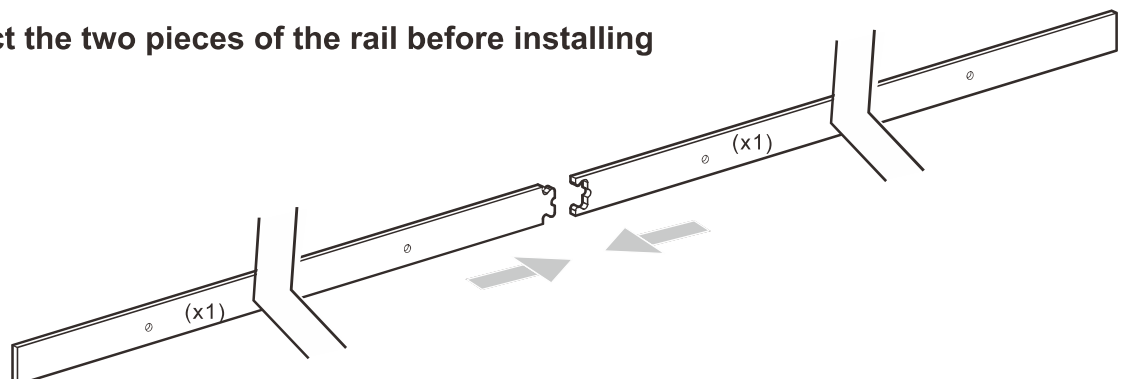
## Door Preparation

The door is divided into three parts: upper, middle and lower parts ①②③.  
Please connect them by connectors ④, and fixed with 13/64"x9/16" screws



## Double door installation steps

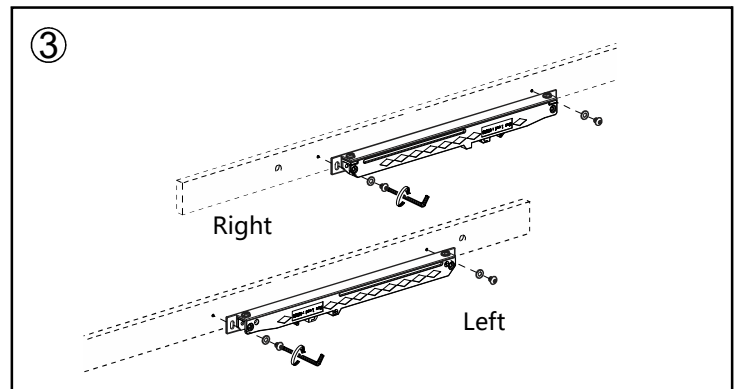
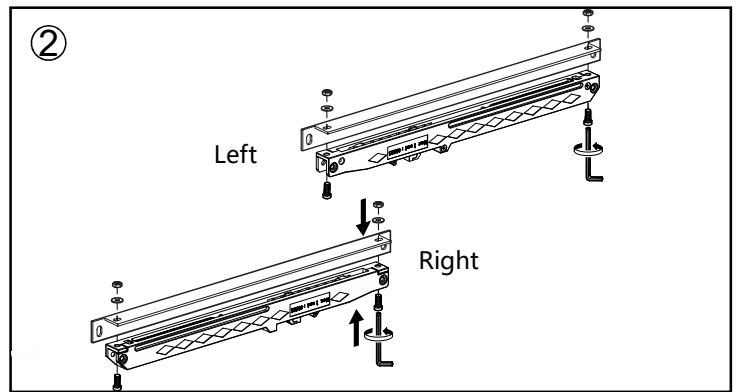
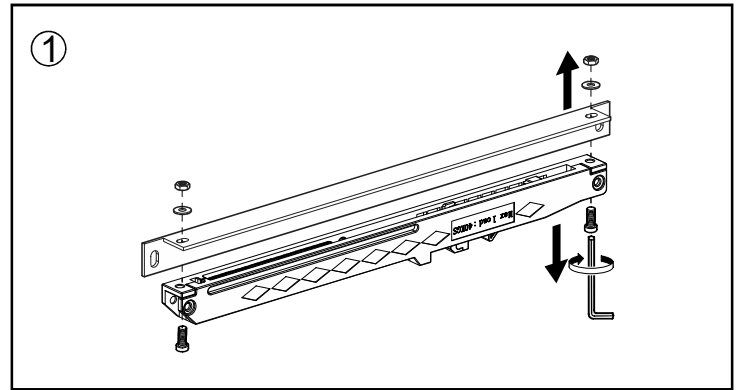
Kindly reminder: Connect the two pieces of the rail before installing



# BARN DOOR HARDWARE KIT WF-TKM02Cx2-BP INSTALLATION GUIDE

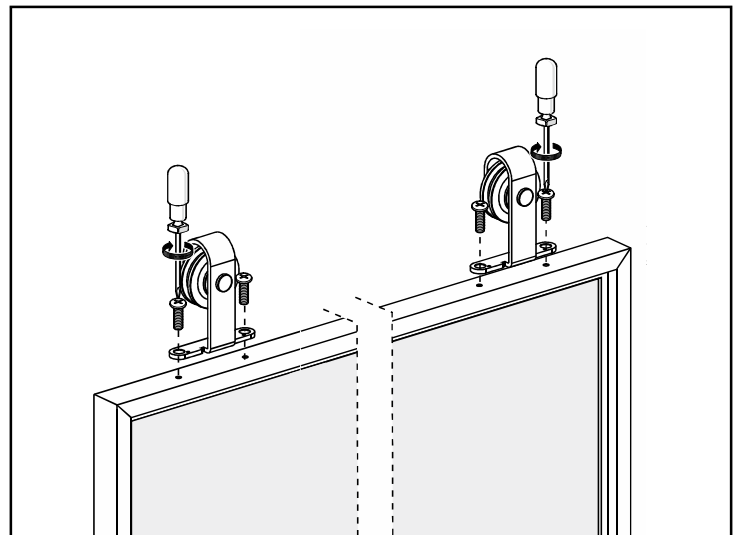
## Step 1. Soft Close Installation

Unscrew the screw with a wrench firstly. Change the soft closes to the correct direction, then tighten and install them on the rail.



## Step 2. Door Preparation – Strap Installation

Install the rollers on the reserved hole of the top of door by 3/16"x15/32" screw.

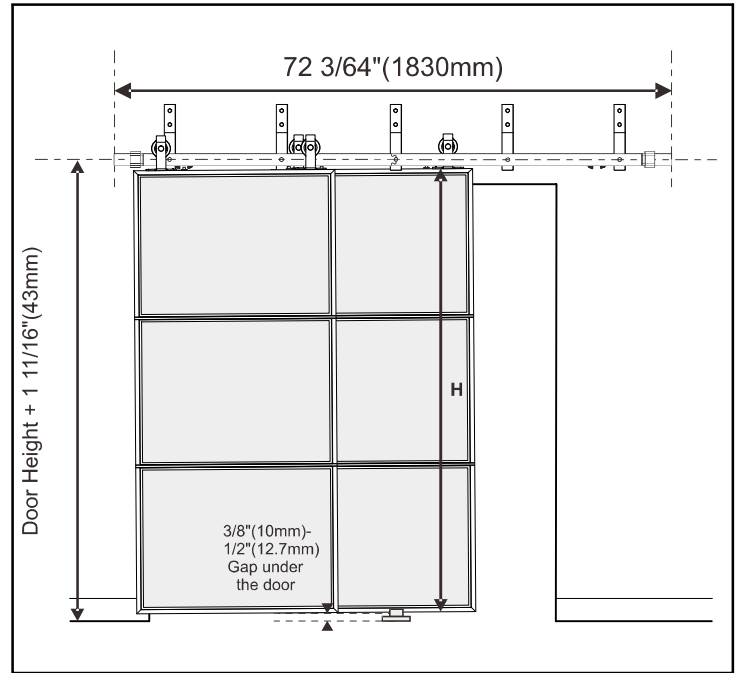


# BARN DOOR HARDWARE KIT WF-TKM02Cx2-BP INSTALLATION GUIDE

## Step 3. CONCRETE Wall Preparation1

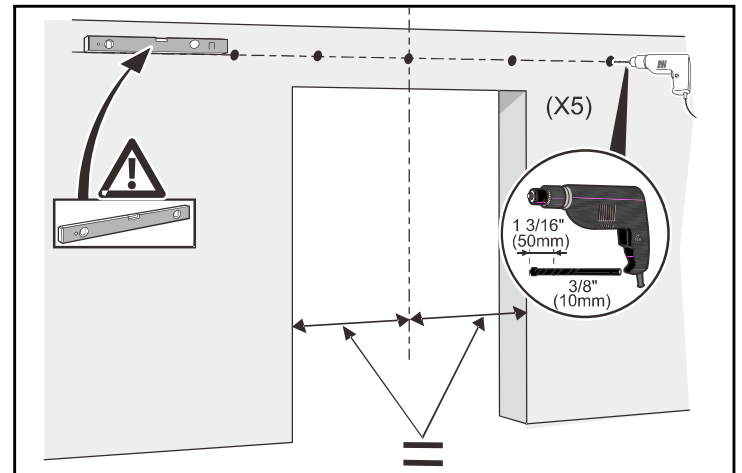
Position the rail by measuring up from the door height (H) + 1 11/16" to the centre of the track. Also ensure a gap of 3/8" - 1/2" at the bottom. Ensure the rail is level and leave a minimum of 2" from the end of the rail to the side of the opening.

If installing with an opening for 80" standard door size, remove the top trim and cut the side trim horizontally along the height of the opening.



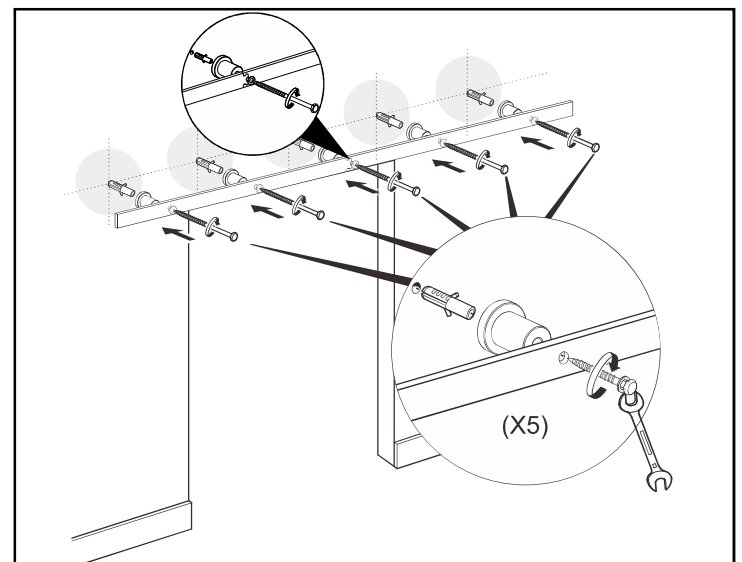
## Step 4. CONCRETE Wall Preparation2

Position the rail in place ensuring that it is level, mark the holes on the rail using a pencil and pre-drill 3/8" holes into the concrete.



## Step 5. CONCRETE Rail Installation

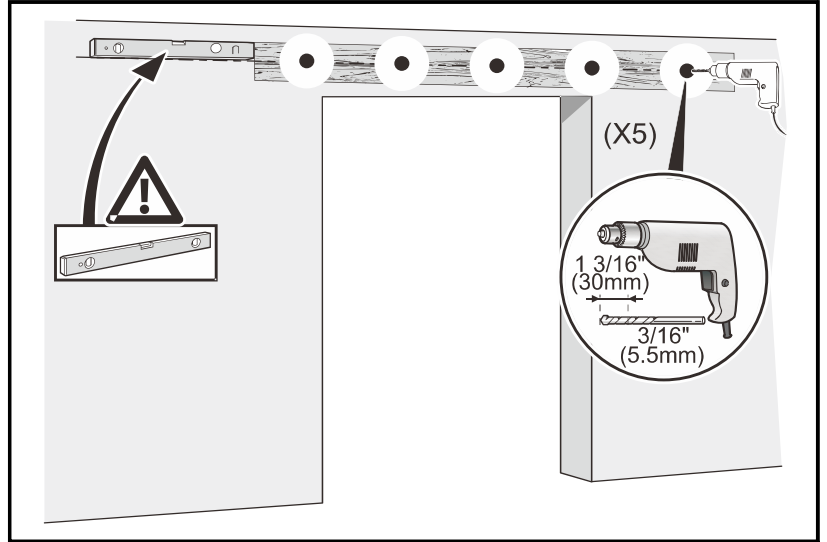
When installing directly into concrete, align the spacer to holes, insert using the provided anchors and hex bolts (with washers). Ensure to un-screw to separate the hex bolt and anchor to install correctly, securing with a wrench.



BARN DOOR HARDWARE KIT  
WF-TKM02Cx2-BP  
INSTALLATION GUIDE

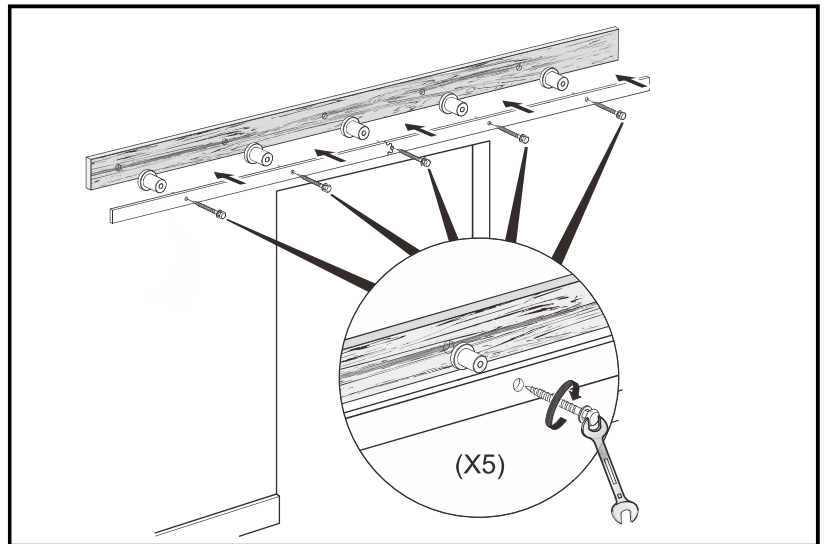
**Step 6. DRYWALL Wall Preparation**

Position the rail on top of the wood blocking ensuring levelness, mark the holes using a pencil and pre-drill 3/16" holes into the wood blocking.



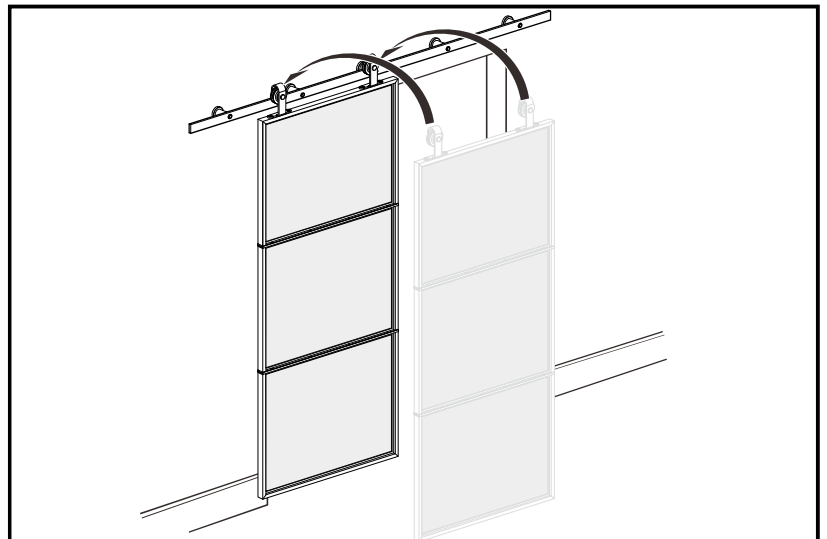
**Step 7. DRYWALL Wall Installation**

When installing into the solid wood block and wall, insert using the provided wall screws. Align each spacer to the rail holes, inserting screws (with washers), securing with a wrench.



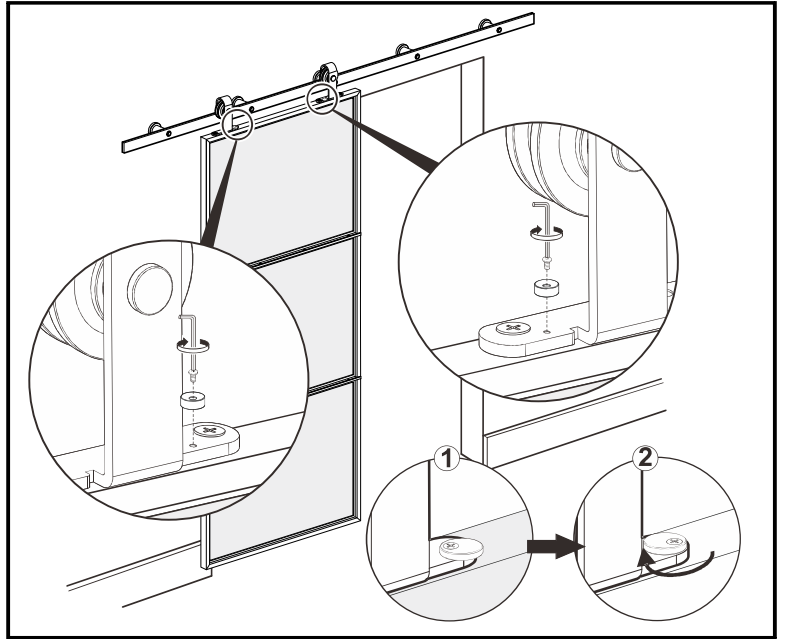
**Step 8. Hanging the Door**

Place the assembled door onto the secured rail and tighten



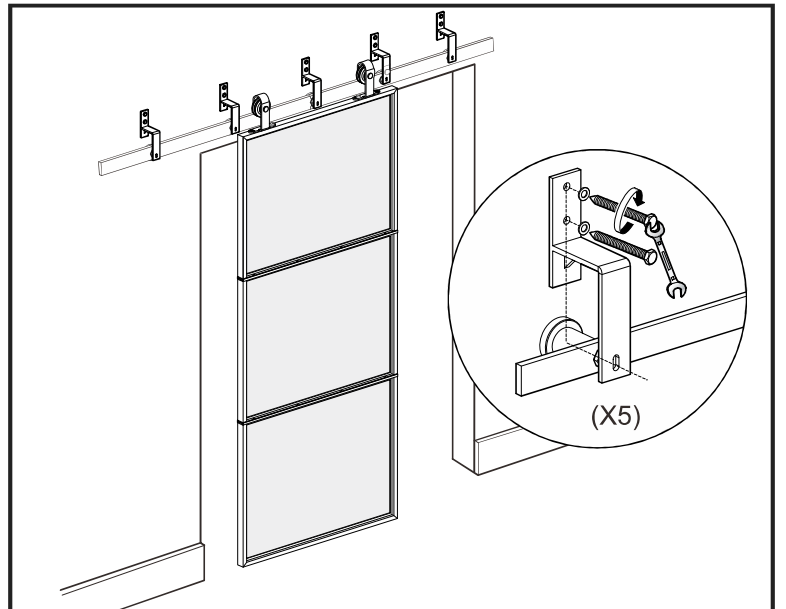
**Step 9. Door Preparation-Anti-jump block Installation**

Install the anti-jump on the rollers by 5/32" x15/64" screw to protect the door from touching the rail when sliding the door



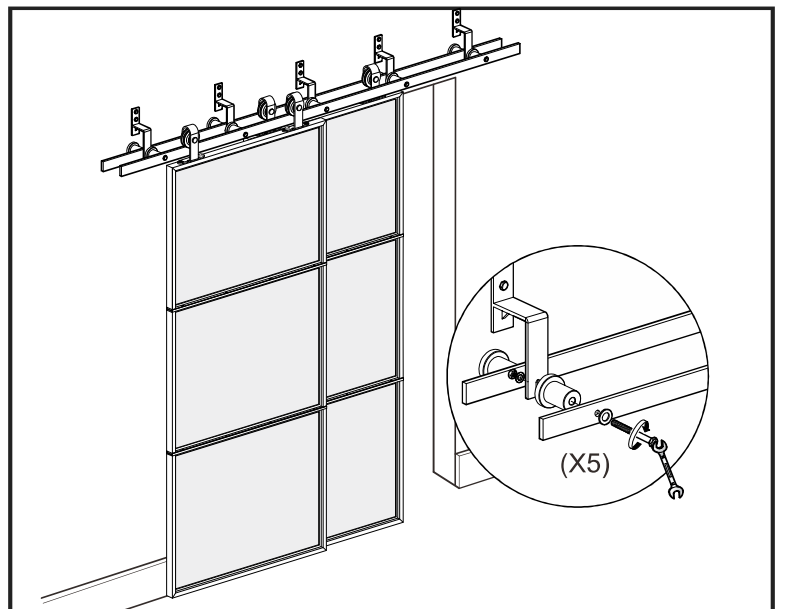
**Step 10.**

Drill 3/8" holes where the brackets will be installed



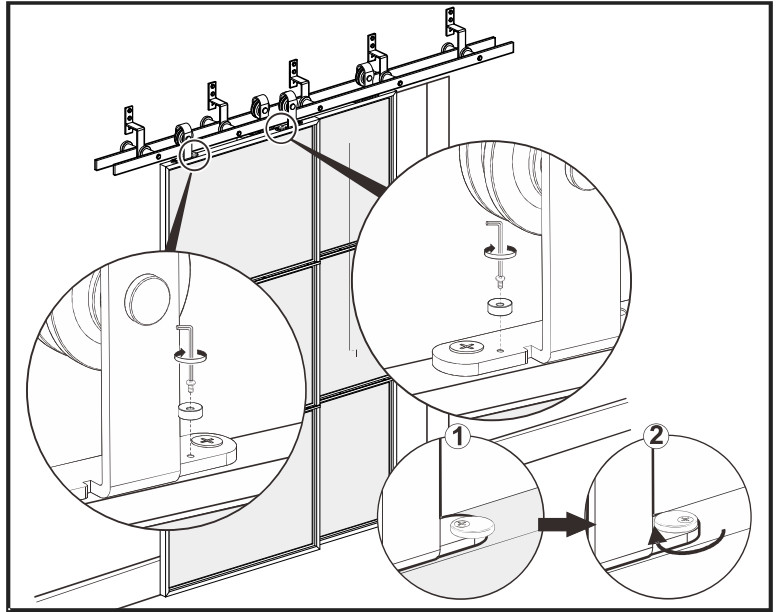
**Step 11.**

Drill 3/8" holes where the brackets will be installed



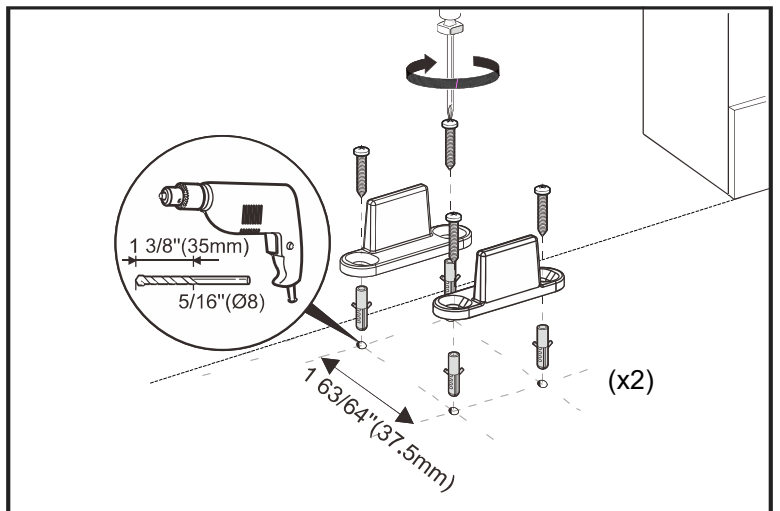
### Step 12. Door Preparation - Anti-jump block Installation

Install the anti-jump on the rollers by  $5/32"$  x  $15/64"$  screw to protect the door from touching the rail when sliding the door.



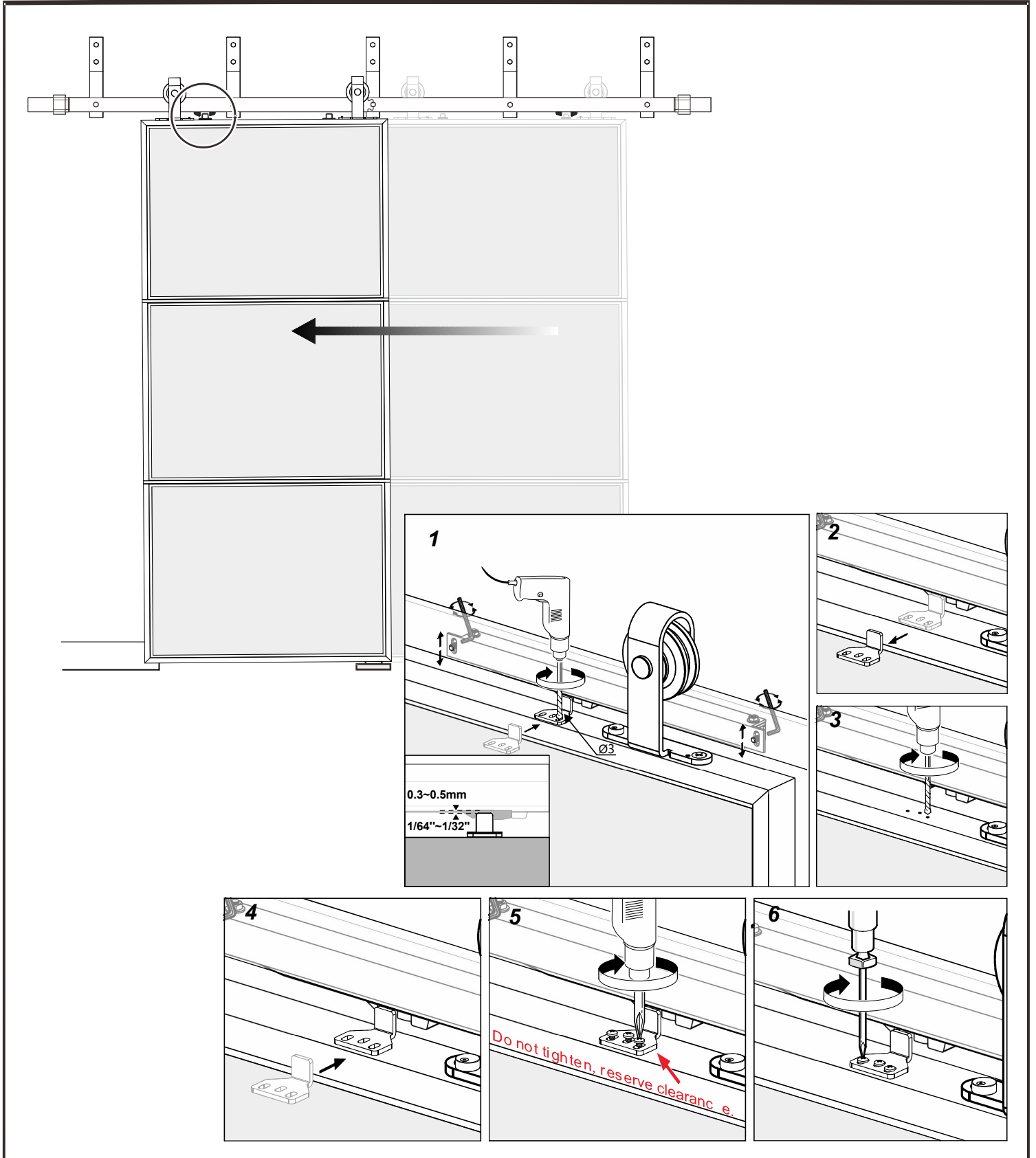
### Step 13. Floor-Mounted Door Guide Installation

Slide the door side-to-side to ensure functionality for final placement then mark holes with a pencil and pre-drill  $5/16"$  holes. If drilling directly into a concrete floor, use the provided anchors.



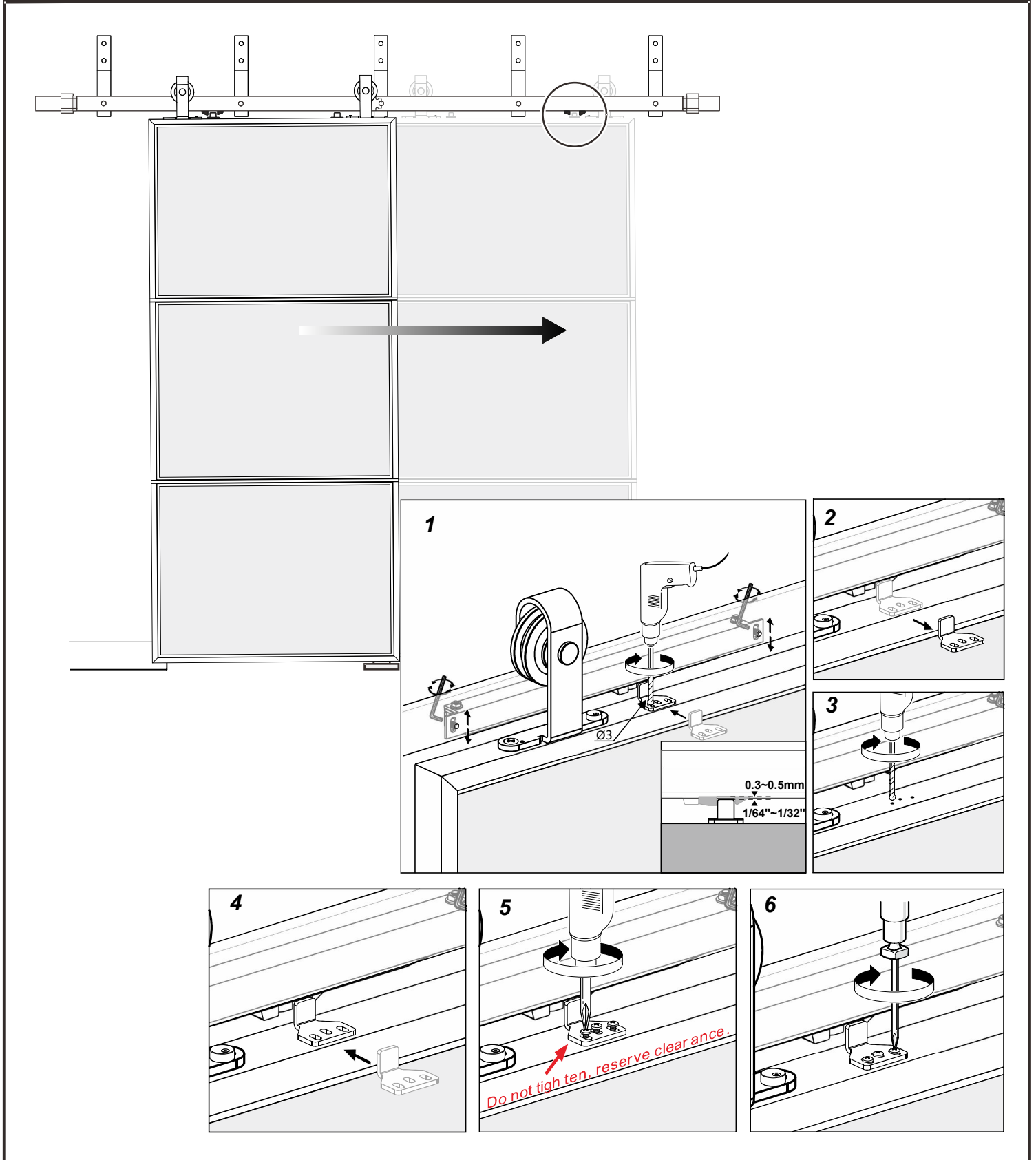
### Step 14. Install right left close attachment

1. Push the door to the left, push it to the required position.  
place the actuator connector in the middle of the actuator claw.
2. Insert the washers and tighten it with a wrench.
3. Push the door to the right and install the actuator on the connector.
4. Move the actuator claw to the right, adjust the actuator to a limited position.  
adjust the height of the soft close, and make sure it works



### Step 15. Install right soft close attachment

1. Push the door to the right, push it to the required position.  
place the actuator connector in the middle of the actuator claw.
2. Insert the washers and tighten it with a wrench.
3. Push the door to the left and install the actuator on the connector.
4. Move the actuator claw to the left, adjust the actuator to a limited position.  
adjust the height of the soft close, and make sure it works.



**Step16. Stopper Installation**

Slide the door closed and to correct position of both stoppers. Using the provided Allen key, tighten into position to complete the installation of the Barn Door Kit.

