

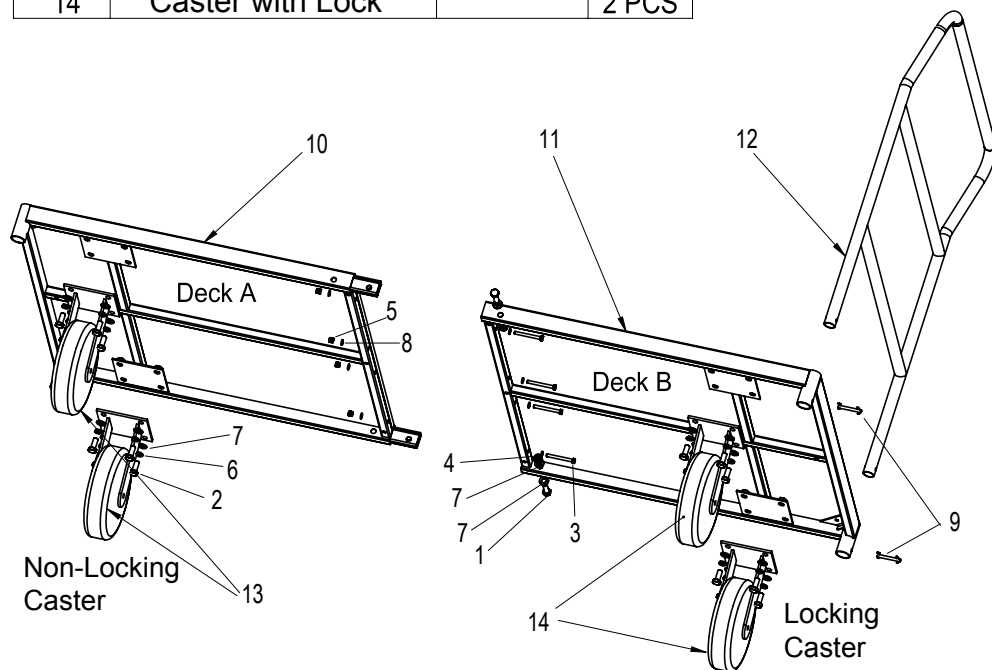
ITEM # PFCKD5

5 FT PLATFORM CART

- COLLAPSIBLE

This Platform Cart can be disassembled for easy, compact storage.

Part #	Part Name		QTY
1	Hex Bolt	M10×35	2 PCS
2	Hex Bolt	M10×25	16 PCS
3	Hex Bolt	M6×60	4 PCS
4	Lock Nut	M10	2 PCS
5	Lock Nut	M6	4 PCS
6	Spring Washer	D10	16 PCS
7	Flat Washer	D10	20 PCS
8	Flat Washer	D6	8 PCS
9	Locking Pins	φ6×52	2 PCS
10	Deck A		1 PCS
11	Deck B		1 PCS
12	Handle		1 PCS
13	Caster w/o Lock		2 PCS
14	Caster with Lock		2 PCS

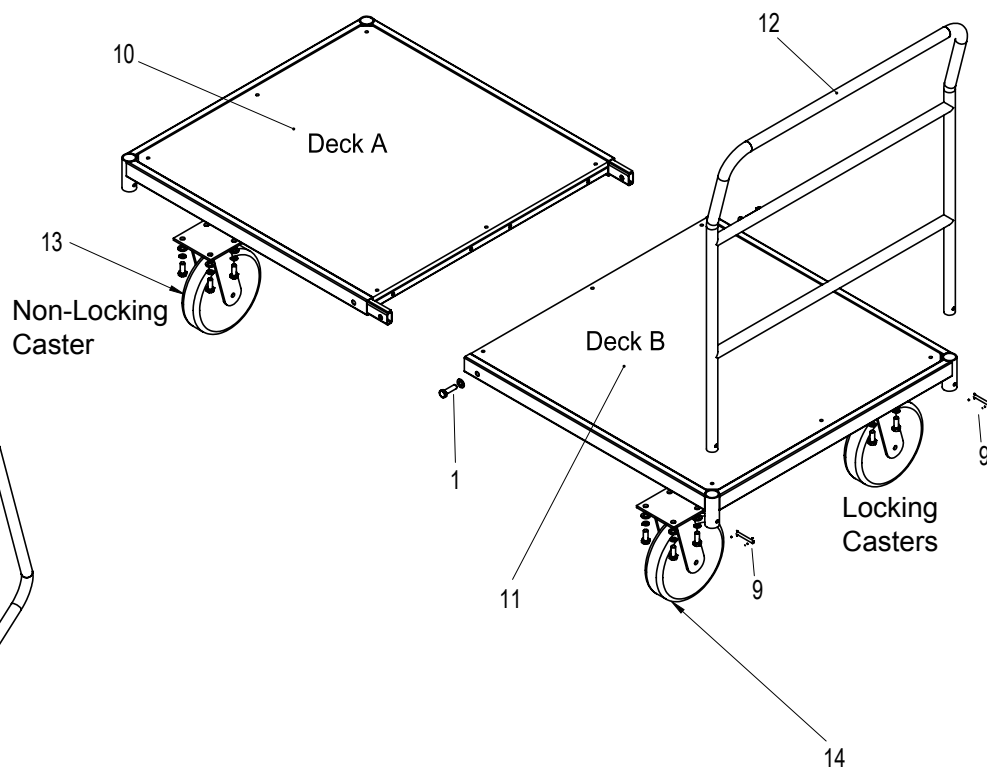


⚠ WARNING

DO NOT OVERLOAD! Max Weight Capacity is 750 lbs.

IF THERE IS ANY QUESTION ABOUT A CONDITION BEING SAFE OR UNSAFE, DO NOT USE THIS PRODUCT!

If you experience a problem, have questions or need parts for this product, call Customer Service at 1-636-532-9888, Monday - Friday, 8 AM - 4 PM Central Time. A copy of the sales receipt is required. KEEP THIS MANUAL, SALES RECEIPT & APPLICABLE WARRANTY FOR FUTURE REFERENCE.



ASSEMBLY INSTRUCTIONS

1. Use Hex Bolt M10x35, Hex Bolt M6x60, Lock Nut M10, Lock Nut M6, Flat Washer D10 and Flat Washer D6 to connect Deck A and Deck B
2. Use Hex Bolt M10x25, Spring Washer D10, Flat Washer D10 to connect Deck A and Caster without Lock.
3. Use Hex Bolt M10x25, Spring Washer D10, Flat Washer D10 to connect Deck B and Caster With Lock.
4. Use Locking Pins (#9) to connect Deck A or B and Handle.