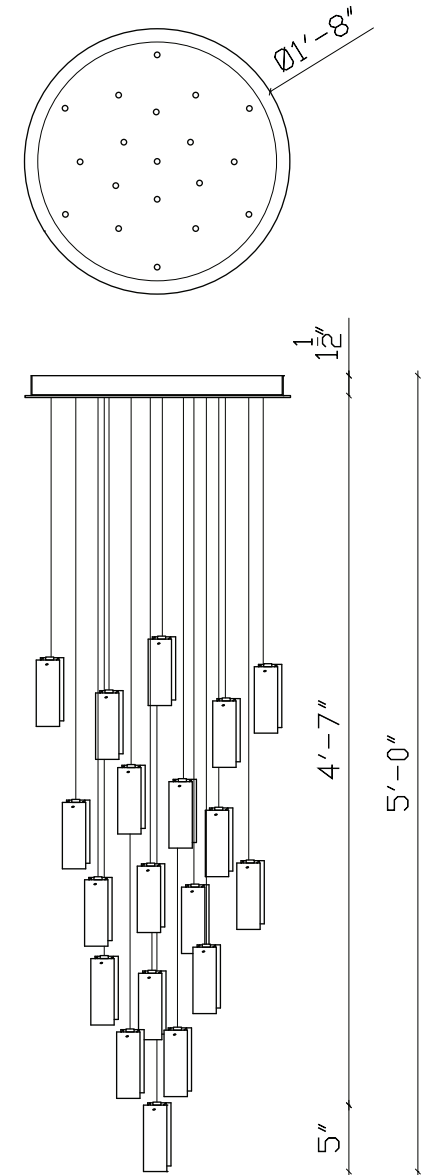
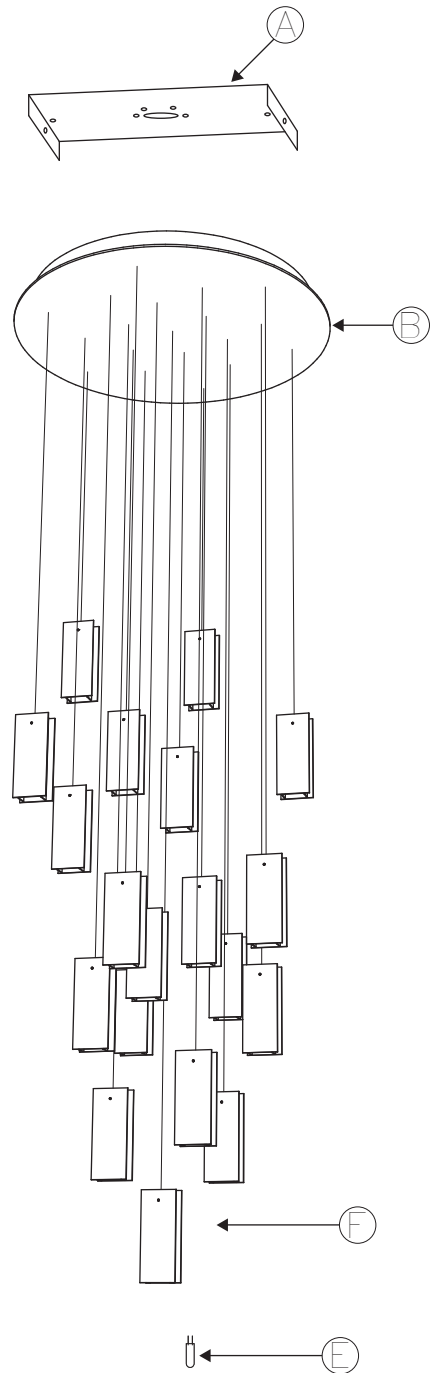
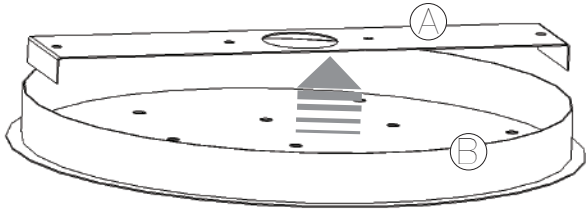


# 19 White, Amber & Clear Drops LED Round Chandelier



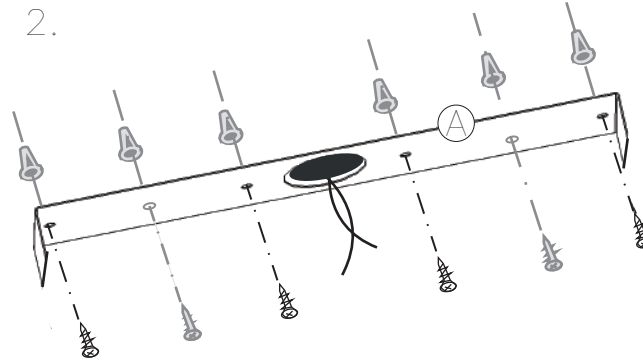
- (A) x1 Bridge
- (B) x1 Base
- (C) x2 Support Chains
- (D) x2 Button Head Screws
- (E) x1 Wire Toggle/Gripper
- (F) x19 Wrapped & Pre-Assembled White, Amber & Clear Drops (Glass)
- (G) x19 LED Bulbs

1.



Separate (A) from (B)

2.




Mount (A) to the ceiling.

*Note: When mounting be sure to locate and mount (A) to a joist/ceiling beam*

If you cannot do so, be sure to use drywall screws and anchors, drill additional holes for mounting for better support

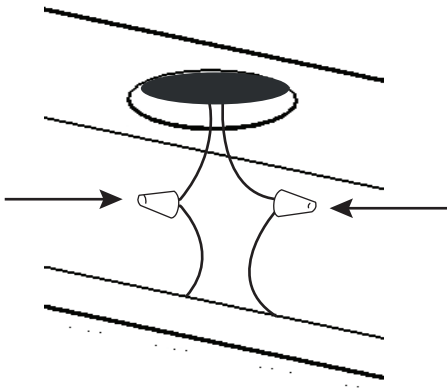
5.

Test lights by turning on power

 *Make sure bulb is not touching the glass!*

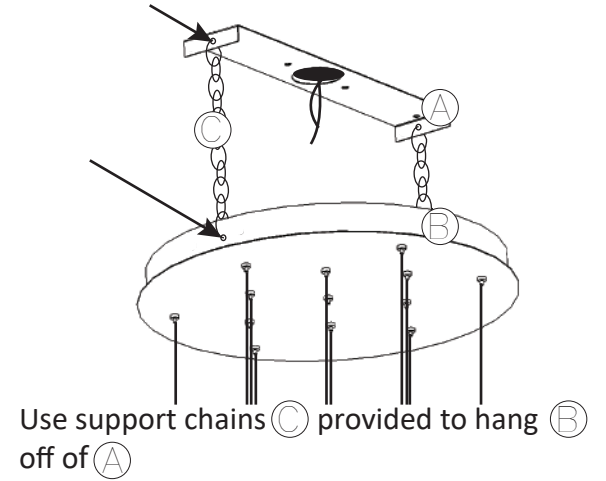
Turn off power after testing

4.



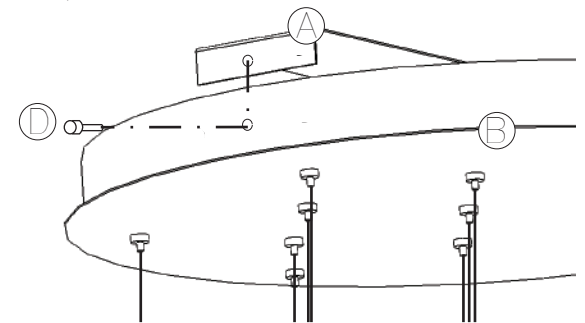
Connect electrical wire to the power

## DROPS ON 19 Assembly Guide



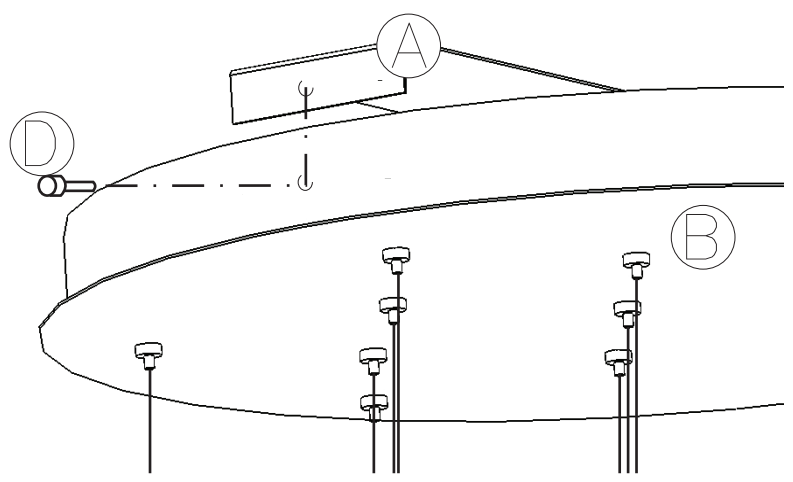
Use support chains (C) provided to hang (B) off of (A)

6.



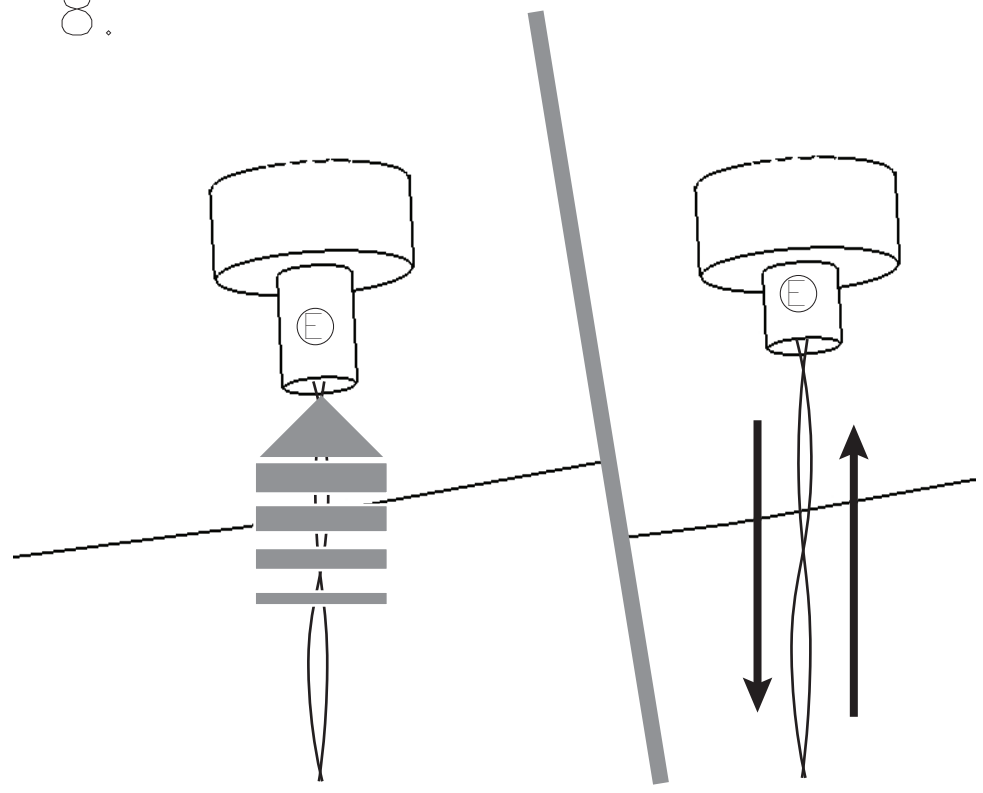
Remove chains from one side only, and attach (B) to (A) with the button head screws (D)

7.



Remove remaining chains and attach **B** to **A** on other side with button head screws **D**

8.



Pendant Cable length may be adjusted up and down by pressing in wire toggle **E** and **gently** pushing /pulling cable