

Wireless Remote Instructions

How to Pair a Wireless Remote

Please read through all instructions before beginning the steps.

Tools Required:
Paper Clip

NOTE: Remain in close proximity of the wireless remote cradle when completing the pairing process. Only one remote can be paired to a unit.

Pairing a Wireless Remote:

1. Remove the (3) AAA batteries from both the original wireless remote and the new, or replacement remote if installed.

Both the original remote, when in proximity of the unit, and the new, or replacement, remote must be free of batteries during the pairing process.
2. Remove the (2) 9-volt batteries from the power supply if installed.
3. Unplug, or disconnect, the unit from the power source (wall outlet or optional lithium-ion battery pack).
4. Disconnect the motor connector from the power supply if using the power supply for the power source.
5. Wait 10 seconds to reset the unit's program. Then reconnect the motor connector to the power supply or battery pack.
6. If using the power supply, plug the power cord into the outlet.
7. Press the Find Me button on the cradle and release. *The Find Me button features the magnifying glass icon; refer to the image in the right column below Step 13.*
8. Remove the battery compartment cover from the backside of the remote. Install three (3) AAA alkaline batteries following the polarity markings in the battery compartment.

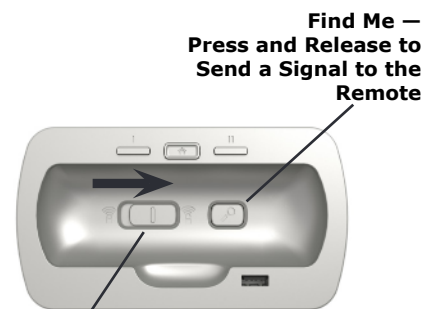
9. Bend one end of a paper clip to lengthen and straighten the "leg."
10. Locate the hole in the backside of the wireless remote, near the bottom. Insert the paper clip "leg" into the hole until you hear a click, and remove the clip.



Hole Location for Pairing

Insert a Paper Clip Until You Hear a "Click" Sound

11. A series of three beeps is transmitted from the remote after approximately five seconds. This indicates a successful pairing of the remote.
12. Replace the battery compartment.
13. Make sure the Do Not Disturb button is turned off to allow communication between the remote and furniture.



Find Me — Press and Release to Send a Signal to the Remote

Do Not Disturb — Slide Button to RIGHT to Turn OFF the Feature