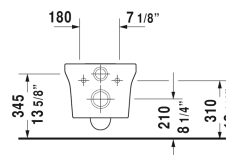
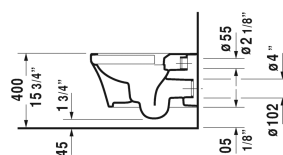
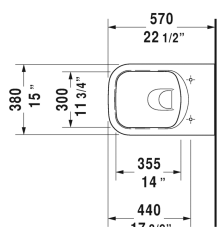


P3 Comforts Toilet wall-mounted Duravit Rimless® # 256109..92

|< 15" Inch >|



Toilet wall-mounted Duravit Rimless®	Dimension	Weight	Order number
rimless, washdown model, Durafix included, cUPC listed			
Colors			
00 White 20 HygieneGlaze (an antibacterial ceramic glaze that provides almost indefinite effectiveness)			
Variant			
♦ 1.6/0.8 gpf	15" x 22 1/2" Inch	54 lb	256109..92
Infobox			
Durafix for concealed fixation is included, In-wall tank & carrier and actuator plate required for installation / Refer to page XXX			
Sanitary ceramics with the special WonderGliss surface finish will remain clean and attractive-looking for a long time to come. When ordering WonderGliss please add a "1" as eleventh digit to the model number.			
Sigma 01 flush plate, dual flush for toilets, White	9 5/8" x 6 1/2" Inch		115770
Geberit in-wall tank and carrier for toilets, width 19 3/4", depth 5 1/2" height (adjustable) 43" - 47"	19 3/4" x 5 1/2" Inch	40.8 lb	111335
Noise reduction gasket for wall-mounted toilet		0.7 lb	005064
Suitable products			
Toilet seat and cover hinges stainless steel, without slow close,			002031
Toilet seat and cover hinges stainless steel, removable, with slow close,			002039

All drawings contain the necessary measurements which are subject to standard tolerances. They are stated in inch & mm and are non-binding. Exact measurements, in particular for customized installation scenarios, can only be taken from the finished ceramic piece.