

Products / Planters / Muro

Muro 10x30x20

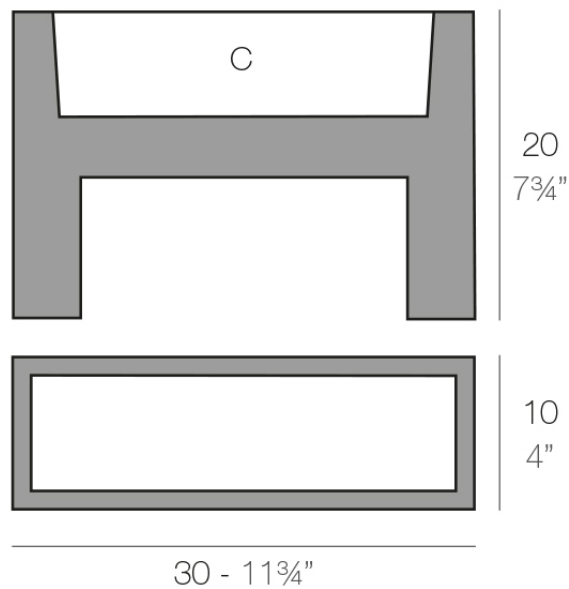


Info

Description

Pot made of polyethylene resin by rotational moulding. 100% Recyclable. Item suitable for indoor and outdoor use. Available in different finishes.

Weight: 0.8 Kg



MURO Nano 30 x 10 x 20 cm
WALL Nano 11 3/4" x 4" x 7 3/4"

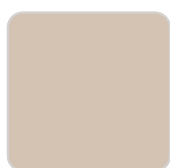
C = 1,5 L
C = 1/2 gal

Finishes

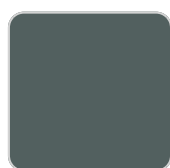
finishes

BASIC

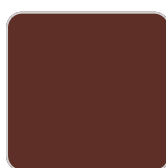
Ref. 42610A



crema



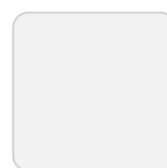
green



purjai red



orange



ice



notte blue



white



black



bronze



steel



anthracite



red



khaki



taupe



plum



ecru



beige

Matt Polyethylene

LACQUERED

Ref. 42610F



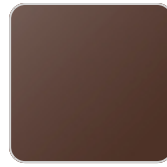
purjai red



white



black



bronze



steel



anthracite



red



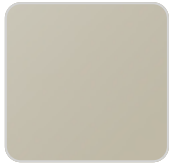
khaki



taupe



plum



ecru



beige



champany

Lacquered Polyethylene

