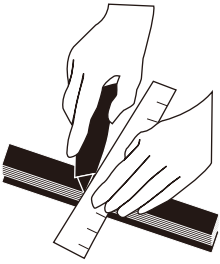


# Installation Steps

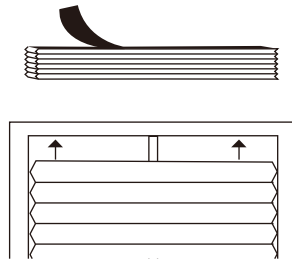
## STEP 1

Trim as needed width with a utility knife.



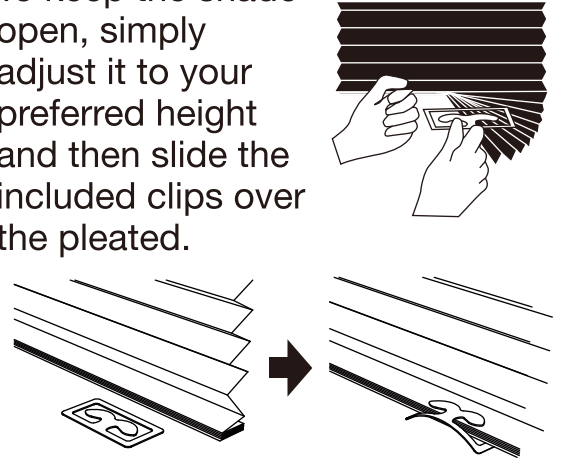
## STEP 2

Peel off the paper of the adhesive tape on the other side, and press the adhesive directly onto the window pane or wall surface.



## STEP 3

To keep the shade open, simply adjust it to your preferred height and then slide the included clips over the pleated.



## No Tools Pleated Fabric Shade

4  
each

size: 36"X72" / 91.4cmX182.8cm

material: 100% Recycled Polyester

### CAUTION:

PLEASE DO NOT HANG THE SHADE CLOSE TO OR NEAR FLAMES (CANDLES, GAS HEATERS, ETC.)

### IMPORTANT:

TAPE IS NOT RECOMMENDED FOR USE ON VARNISHED, LACQUERED, OR FRESHLY PAINTED SURFACES. DO NOT USE ON WALLPAPER. IF IN DOUBT, TEST BEFORE USING.