

ASSEMBLY INSTRUCTIONS

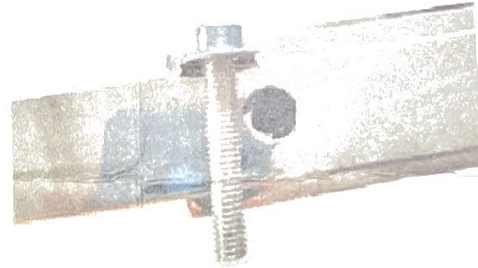
MODEL NO.:A69 Desc. :dining table with marble top

Before you begin , Please follow Assembly Instruction carefully . Then follow them step by step .

1. install 4 pcs adjustable screw foot,then the frame on to the base



2.match 2 holes and tightening 3 screws with rings



3.put marble on the top of frame

