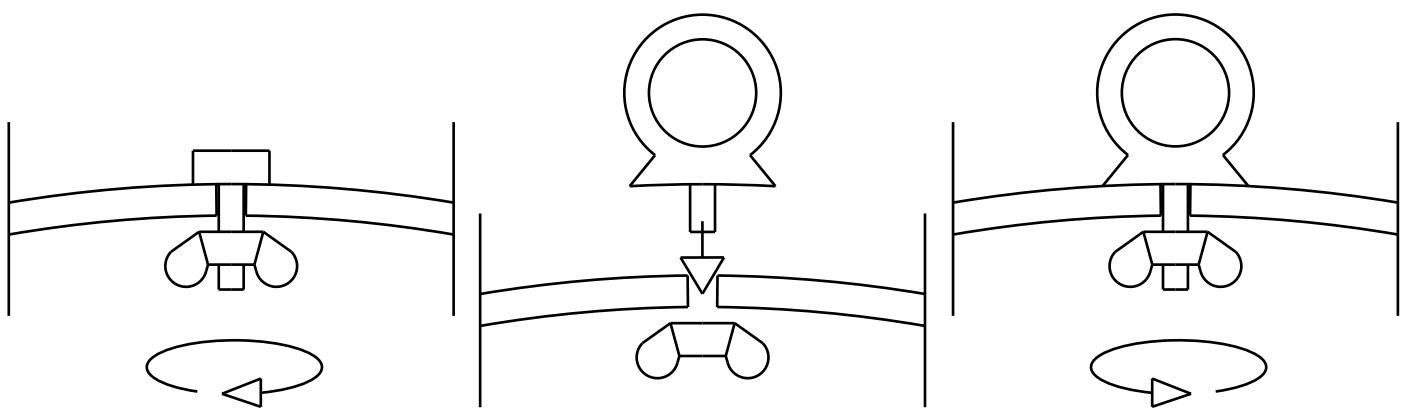


I

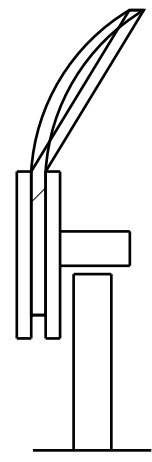
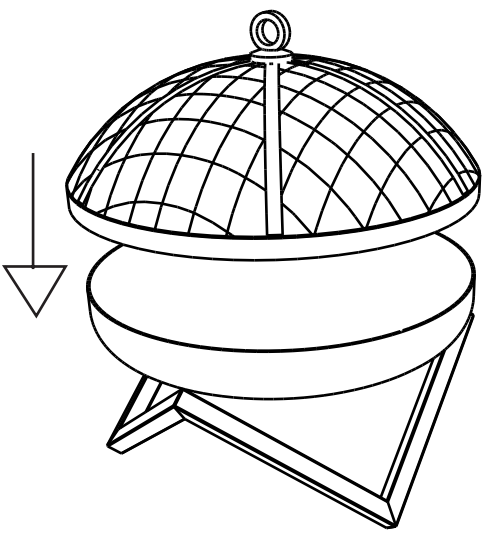


II

Remove the transportation screw

Insert the loop

Attach the loop with the nut



Put spark screen on 3 pins

III

**CAUTION !**

1. Use Spark Screen whenever you're burning a fire pit
2. Make sure, the Spark Screen sits properly on your fire pit, on all three Spark Screen holders.
3. Do not touch your Spark Screen or its handle with bare hand/loop. Please use heat resistant glove or fire pit poker.
4. When finished burning your fire pit, please do not try to decrease the heat with water- let Spark Screen cool down slowly.