

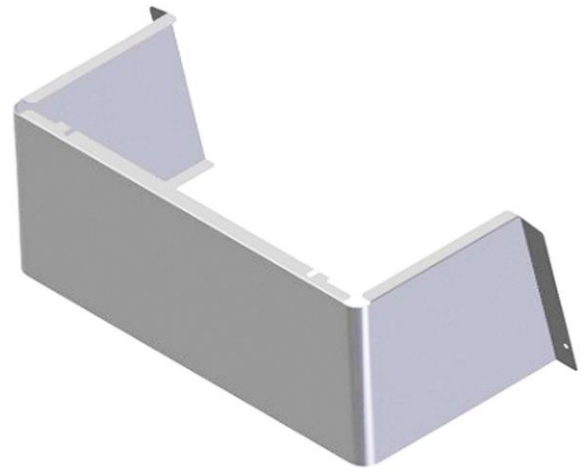
**PRODUCT SPECIFICATIONS**

Cane Apron for HAC HVR EMABF & VRC Models (Stainless).  
Overall dimensions are 15-3/4" x 8-5/8" x 6-1/2".

<b>Finish:</b>	Stainless Steel
<b>Dimensions:</b>	15-3/4" x 8-5/8" x 6-1/2"
<b>Shipping Weight:</b>	3 lbs.

**Special Note:** For use with EMABF, VRC and VRCGRN models.

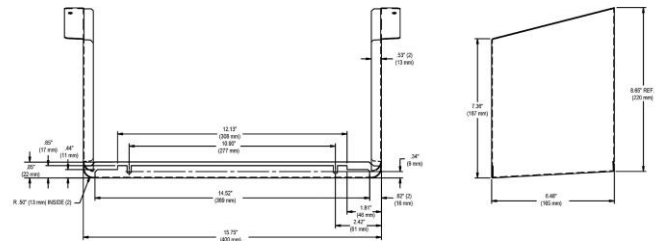
- Cane touch apron designed for use in specific bi-level applications.
- For when coolers or bottle fillers are installed on an exposed wall.
- Designed for ADA compliance.
- Provides the mandatory 27" (686 mm) floor to underside requirement for detection in a circulation path when properly installed.
- Stainless steel finish is corrosion resistant and attractive.



**Included with Product: Cane apron assembly**

**AMERICAN PRIDE. A LIFETIME TRADITION.**  
Like your family, the Elkay family has values and traditions that endure. For almost a century, Elkay has been a family-owned and operated company, providing thousands of jobs that support our families and communities.

[Installation Instructions \(PDF\)](#)



PART: \_\_\_\_\_ QTY: \_\_\_\_\_

PROJECT: \_\_\_\_\_

CONTACT: \_\_\_\_\_

DATE: \_\_\_\_\_

NOTES: \_\_\_\_\_

APPROVAL: \_\_\_\_\_

*In keeping with our policy of continuing product improvement, Elkay reserves the right to change product specifications without notice. Please visit [elkay.com](http://elkay.com) for the most current version of Elkay product specification sheets. This specification describes an Elkay product with design, quality, and functional benefits to the user. When making a comparison of other producers' offerings, be certain these features are not overlooked.*