

71" NICOLE ACRYLIC FREESTANDING TUB

Cat. No.

ATFN71



L: 71"
W: 31-3/4"
H: 30"

Water depth: 18-1/2" to top of tub
Water depth: 14" to overflow

The following is recommended for ATFN71 tubs:

- Faucet:part #4602,4604,7082 or 7088
- Rigid, freestanding supplies:part #4502
- Freestanding filler:part #7902, 7922, or 7932
(Does not need bath supplies)
- Leg tub drain: #5599LT or 5599TS



Overflow can be drilled.
With overflow drilled this tub
requires drain 5599PD.
**Tubs that have been
drilled with overflow are
"special order" and
are not returnable.**

Gallon Capacity: 61
Shipping Weight: 232 lbs.
Empty Weight: 122 lbs.
Filled Weight: 631 lbs.

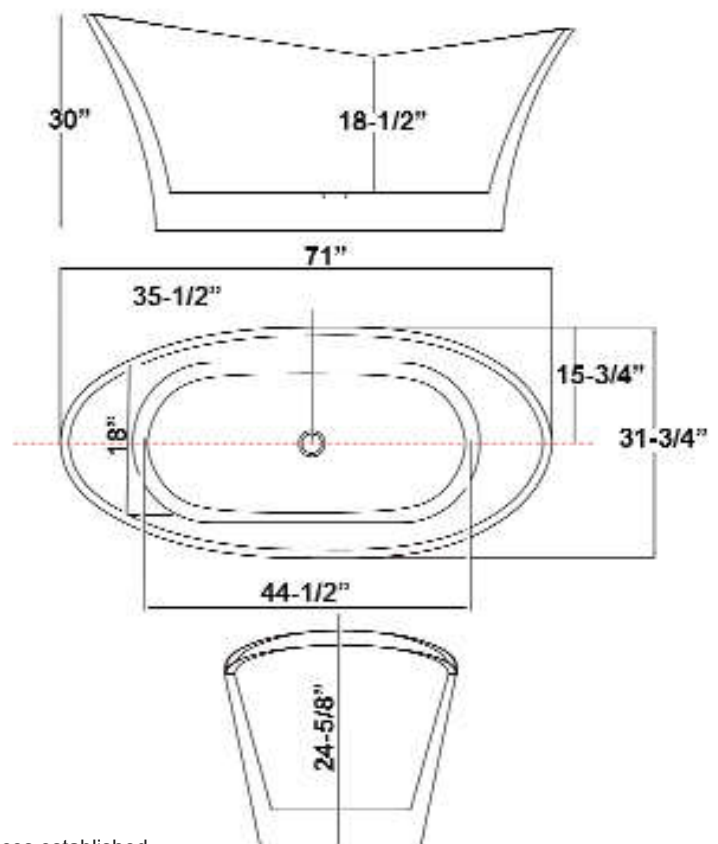
Features:

- ▶ Acrylic construction for lighter weight
- ▶ Smooth inside and out
- ▶ No faucet hole
- ▶ No overflow hole
- ▶ Includes built-in adjusters
- ▶ Tub is thoroughly inspected before shipment
- ▶ Option to add foam insulation between tub walls available



WARNING: This product can expose you to chemicals, including Toluene and Styrene, which are known to the state of California to cause cancer and birth defects or other reproductive harm.
For more information go to www.P65Warnings.ca.gov

Custom Colors Available (inside of tub is always white enamel):
Painted bathtubs are considered "special order" and are not returnable
\$160 Bisque or Black \$250 Designer Color



Dimensions of fixture are nominal and may vary within the range of tolerances established.

08/24/2018

P 847•244•1234

www.barclayproducts.com