

Step 1: Remove mounting hardware:

Remove the mounting screws, mounting nut, and rubber & metal washer from the mounting pipe

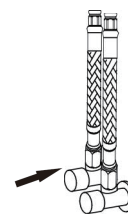
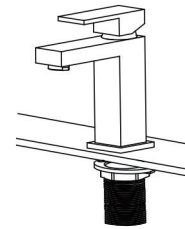
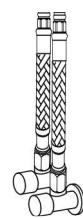
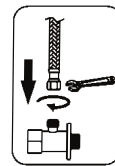
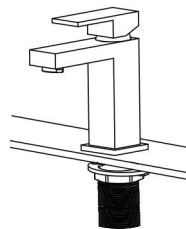
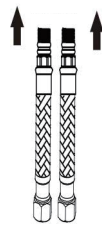
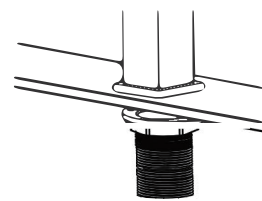
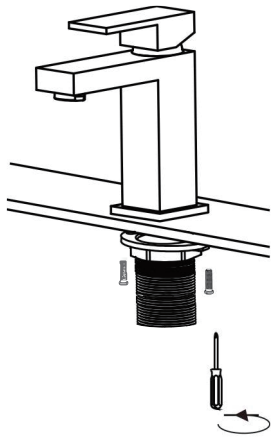
Step 2: Faucet installation

For three-hole installation: Install deck plate, base plate, and silicone sealant (optional)
For single-hole installation: Install base plate

Step 3: Install faucet body
Insert faucet body into hole in countertop or deck plate
Pre-drilled hole size:

Step 4: Install mounting hardware:

Install mounting hardware from underneath the countertop to the faucet



Step 5: Secure mounting hardware:

Adjust direction of faucet body so that handle is on right side of faucet. Tighten mounting nut and mounting screws with Phillips screwdriver until snug

Step 7: Connect waterlines:

Connect waterlines to hot and cold copper lines. Connect waterlines to angle stops. Tighten both ends of waterlines with a wrench until snug. Turn on hot and cold angle stops and check for leaks

Step 8: Flush spray hose:

Remove spray head from spray hose. Hold tip of spray hose. Turn faucet on and let the water run for 60 seconds to flush any debris

Step 9: Check for leaks:

Check for leaks at the connections. Retighten if necessary

Care & Maintenance

*To keep the product clean & shining, follow the steps below:

1. Rinse with clean water & dry with a soft cloth
2. Do not clean with soaps, acid polish, abrasives, or harsh cleaners
3. Do not use cloth with a coarse surface
4. Unscrew the aerator and clean when necessary

