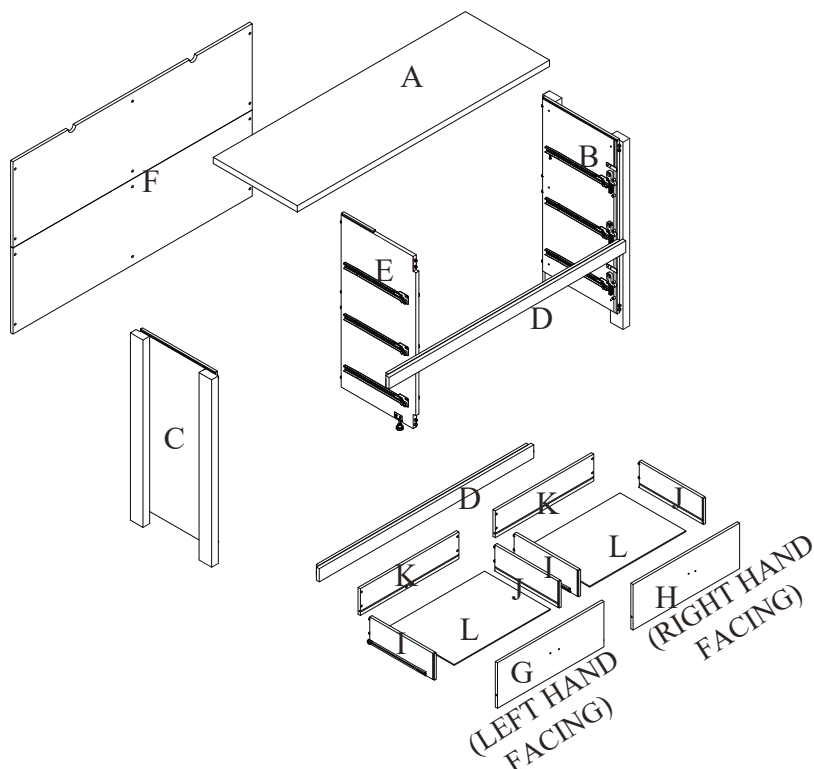
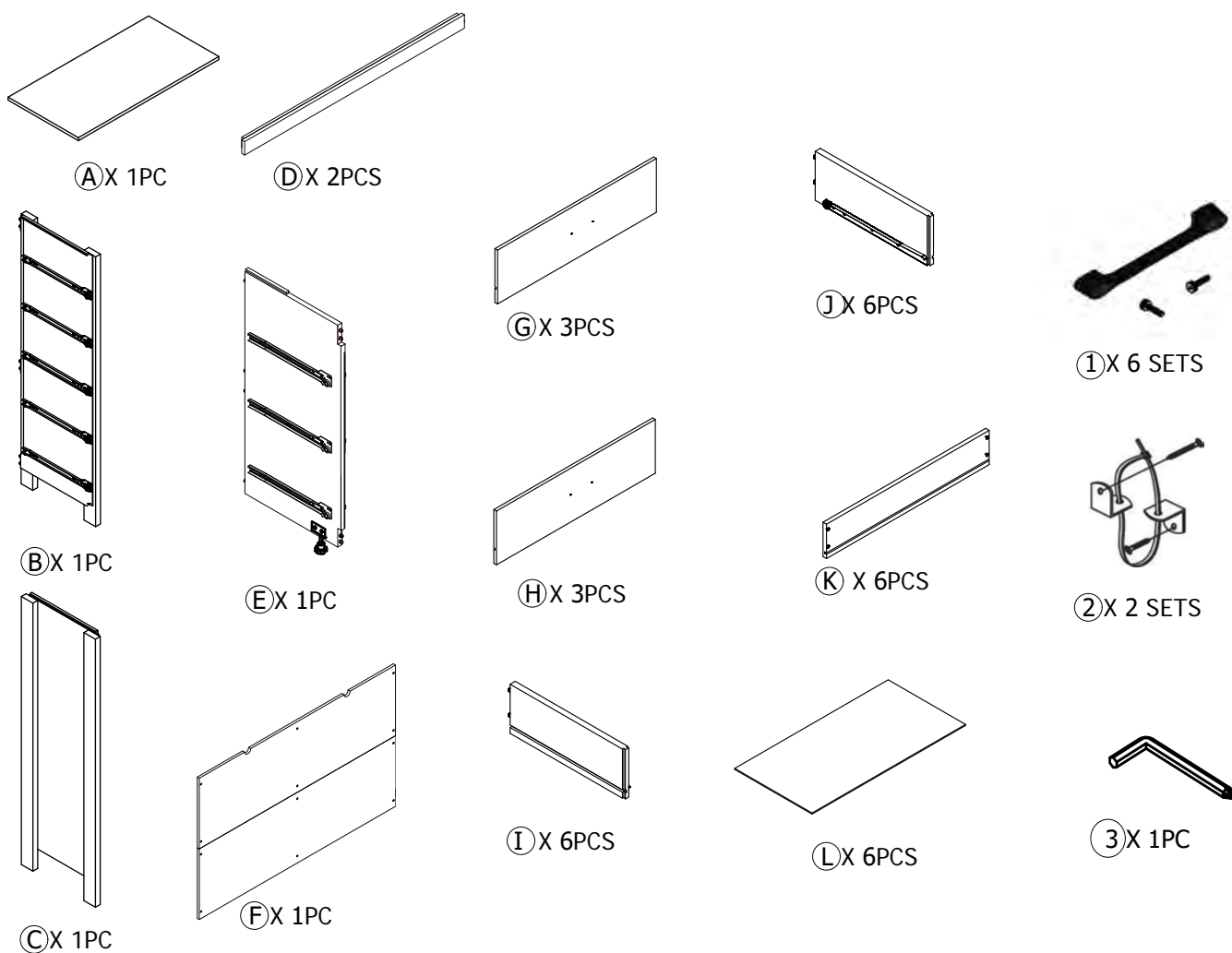


# ASSEMBLY INSTRUCTIONS

## DRAWER LOWBOY DRESSER



COMPLETED ASSEMBLY

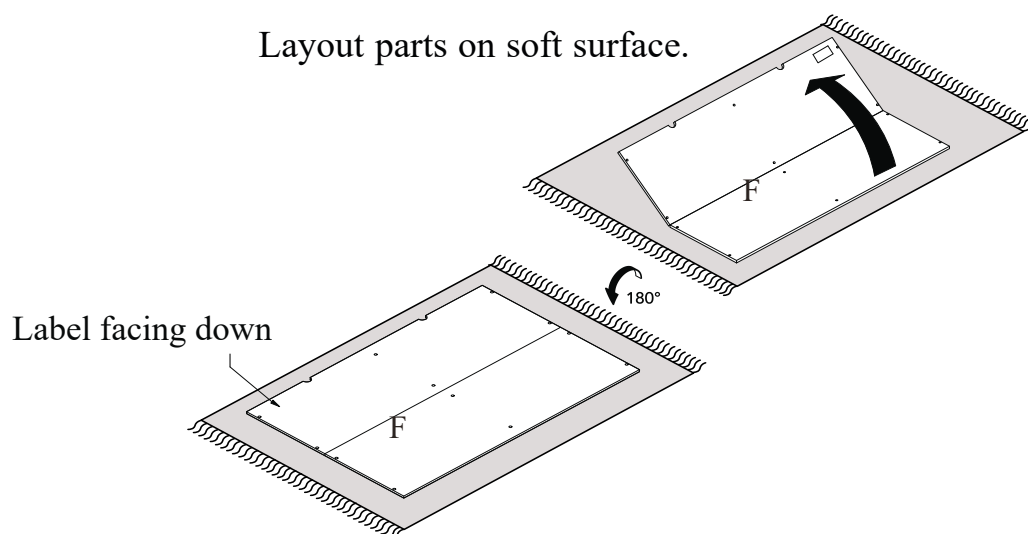


# ASSEMBLY INSTRUCTIONS

## DRAWER LOWBOY DRESSER

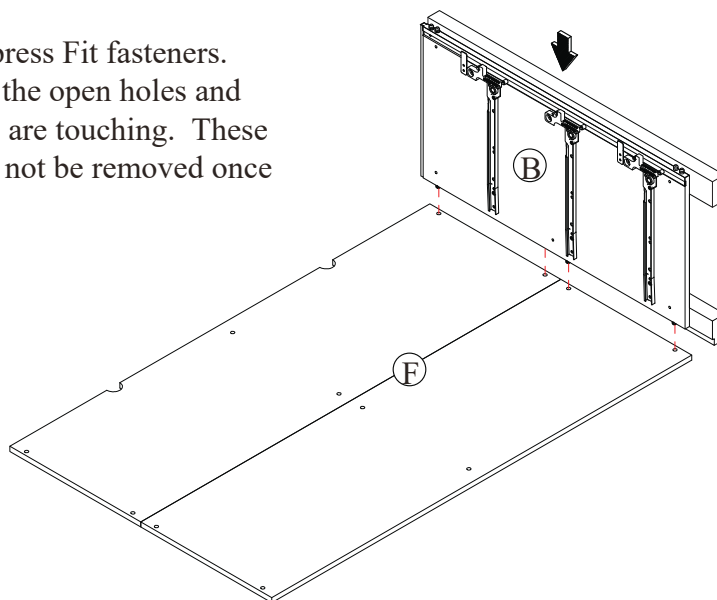
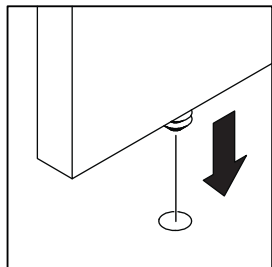
1

Layout parts on soft surface.



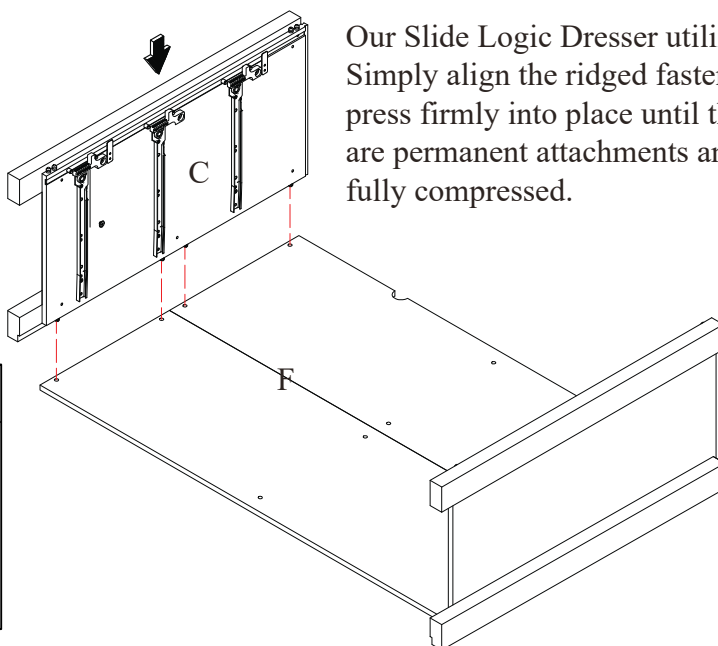
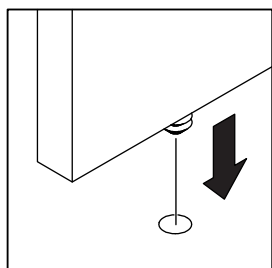
2

Our Slide Logic Dresser utilizes Compress Fit fasteners. Simply align the ridged fasteners with the open holes and press firmly into place until the boards are touching. These are permanent attachments and should not be removed once fully compressed.



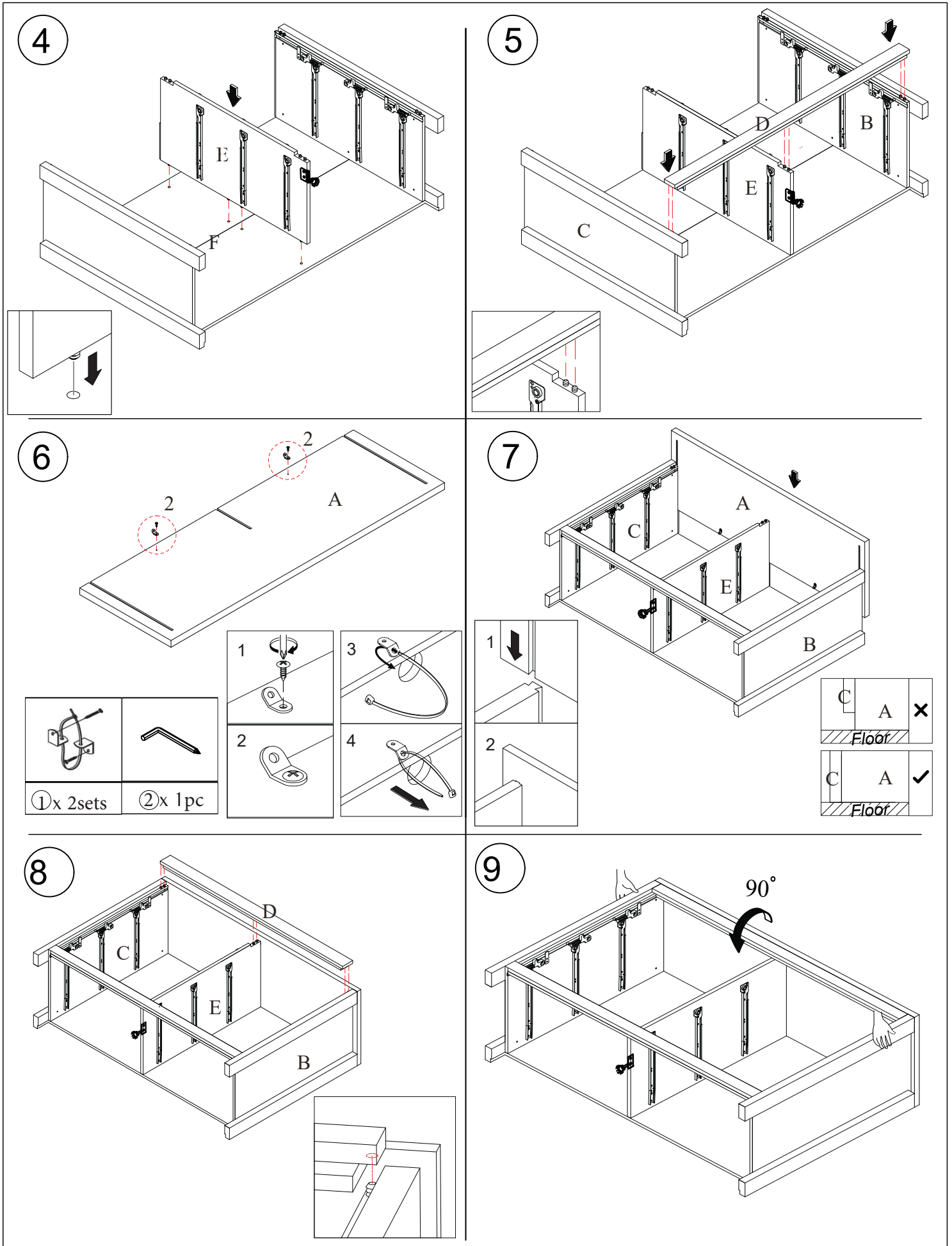
3

Our Slide Logic Dresser utilizes Compress Fit fasteners. Simply align the ridged fasteners with the open holes and press firmly into place until the boards are touching. These are permanent attachments and should not be removed once fully compressed.



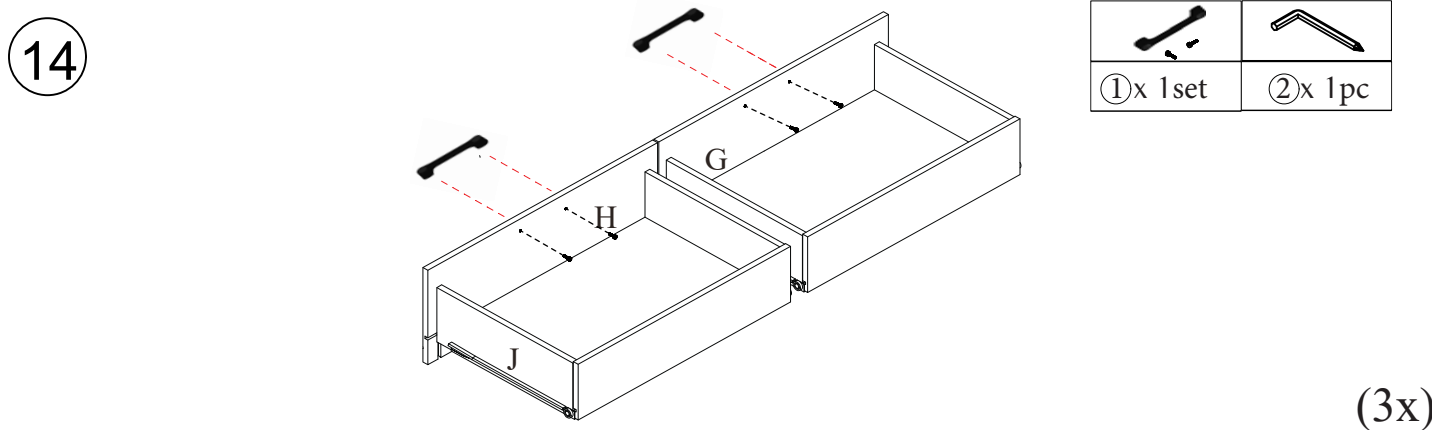
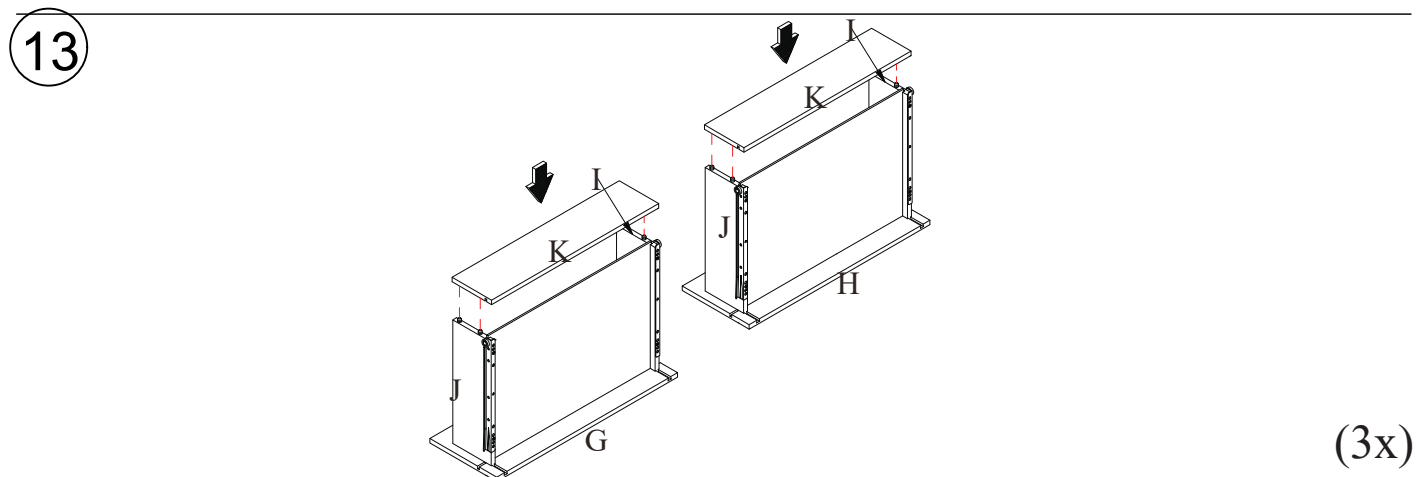
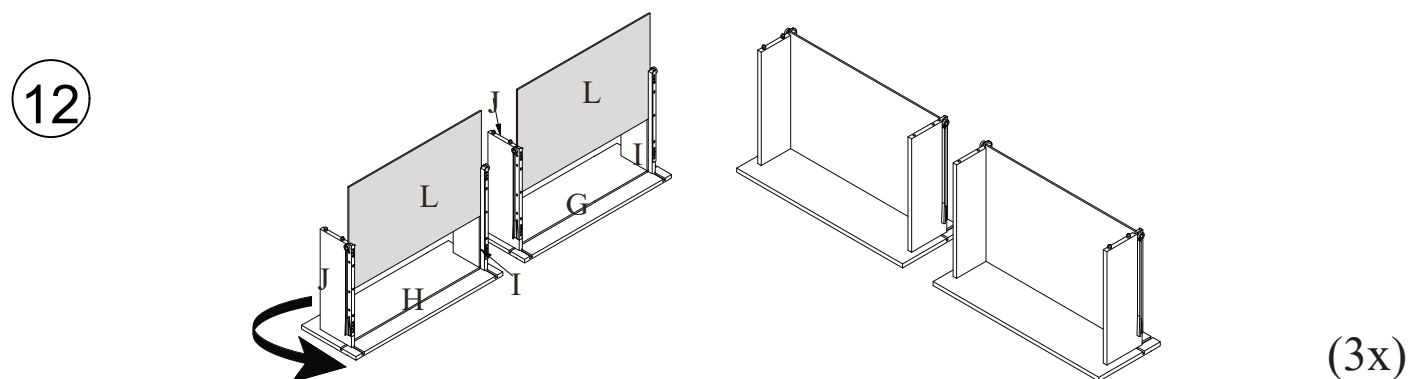
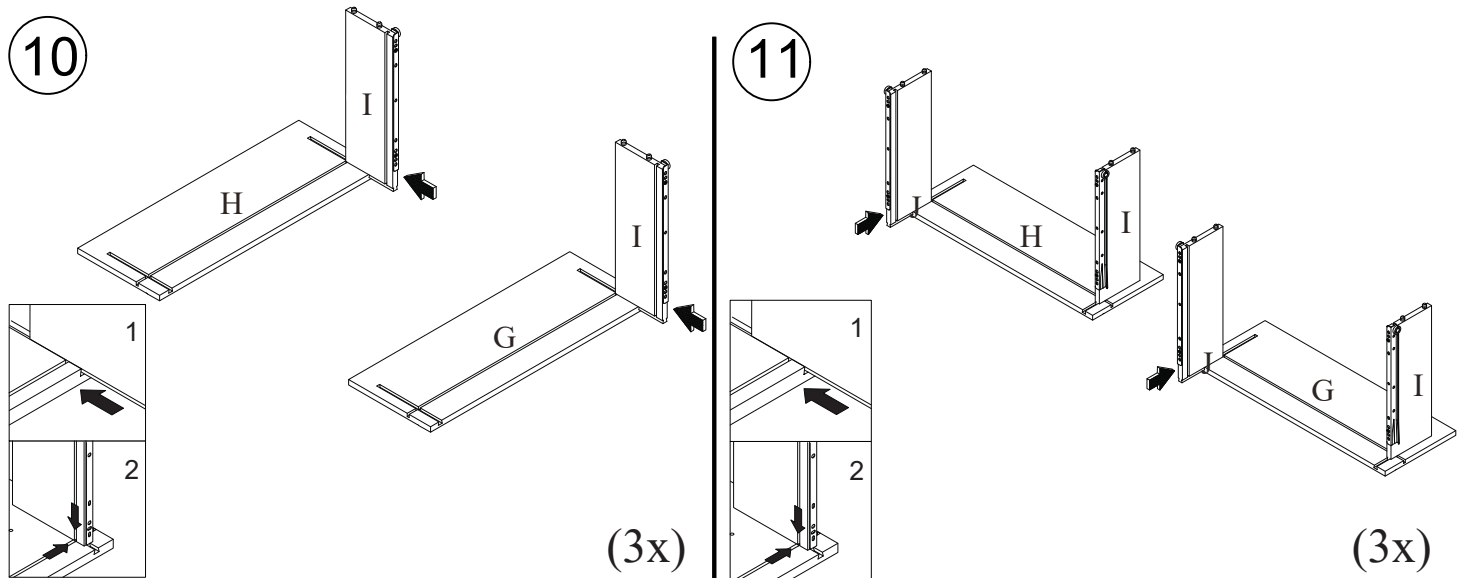
# ASSEMBLY INSTRUCTIONS

## DRAWER LOWBOY DRESSER



# ASSEMBLY INSTRUCTIONS

## DRAWER LOWBOY DRESSER

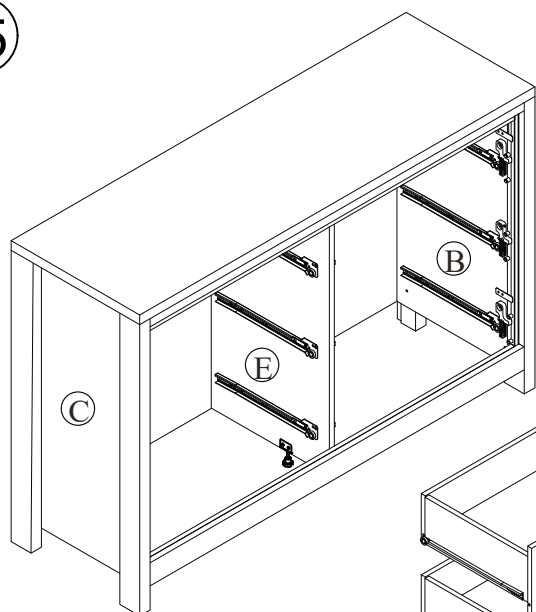




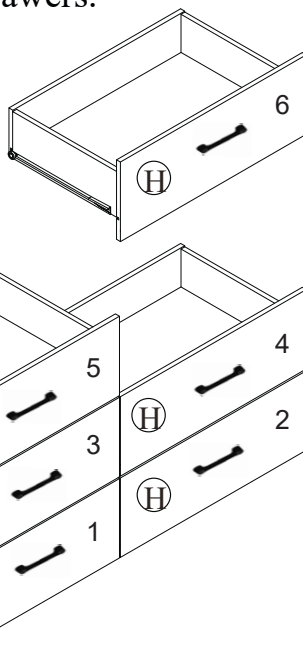
# ASSEMBLY INSTRUCTIONS

## DRAWER LOWBOY DRESSER

15



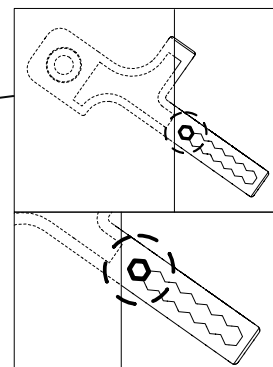
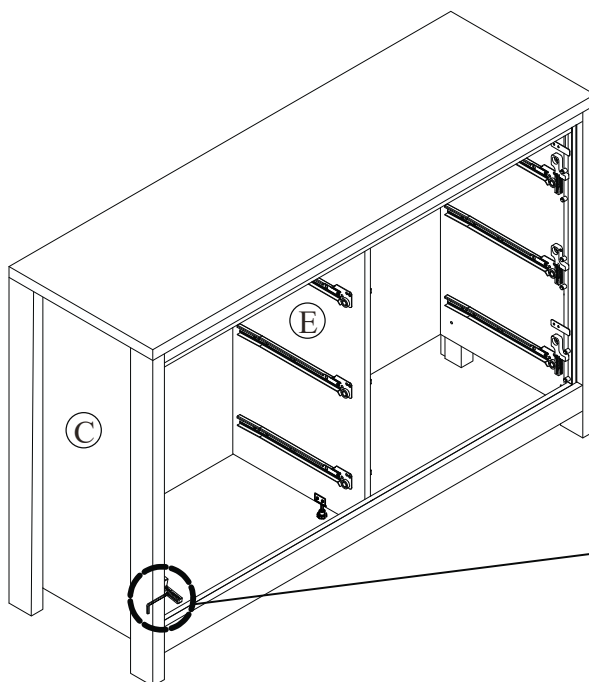
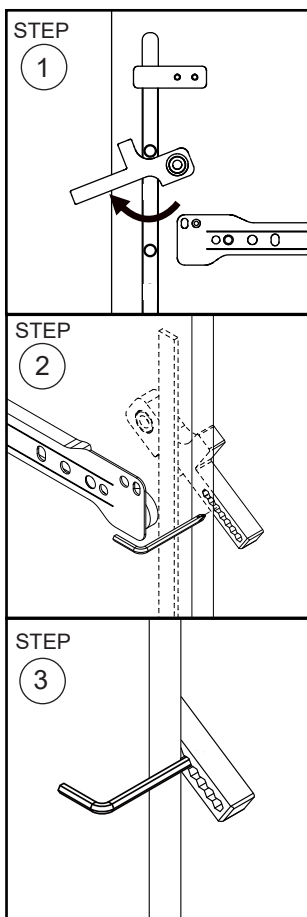
Insert drawers G then H starting with both bottom drawers first, followed by both middle, & then top drawers.



16

*Interlocking Drawer System* - Safety feature designed to allow only one drawer to be opened at a time.

When inserting each drawer, use the Allen wrench (part 3) to lift the interlock upwards and align the drawer rails into place.

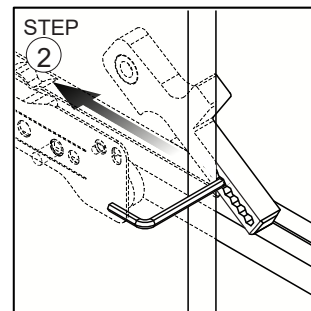
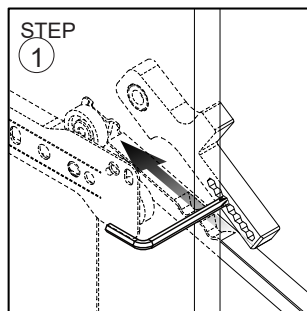


# ASSEMBLY INSTRUCTIONS

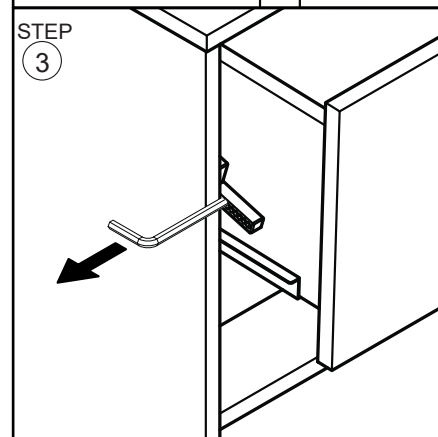
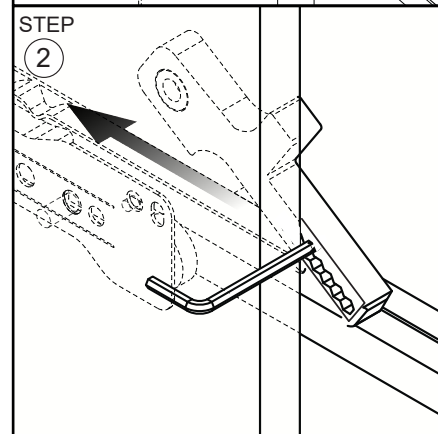
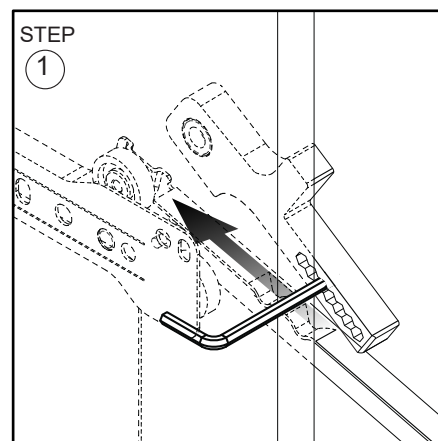
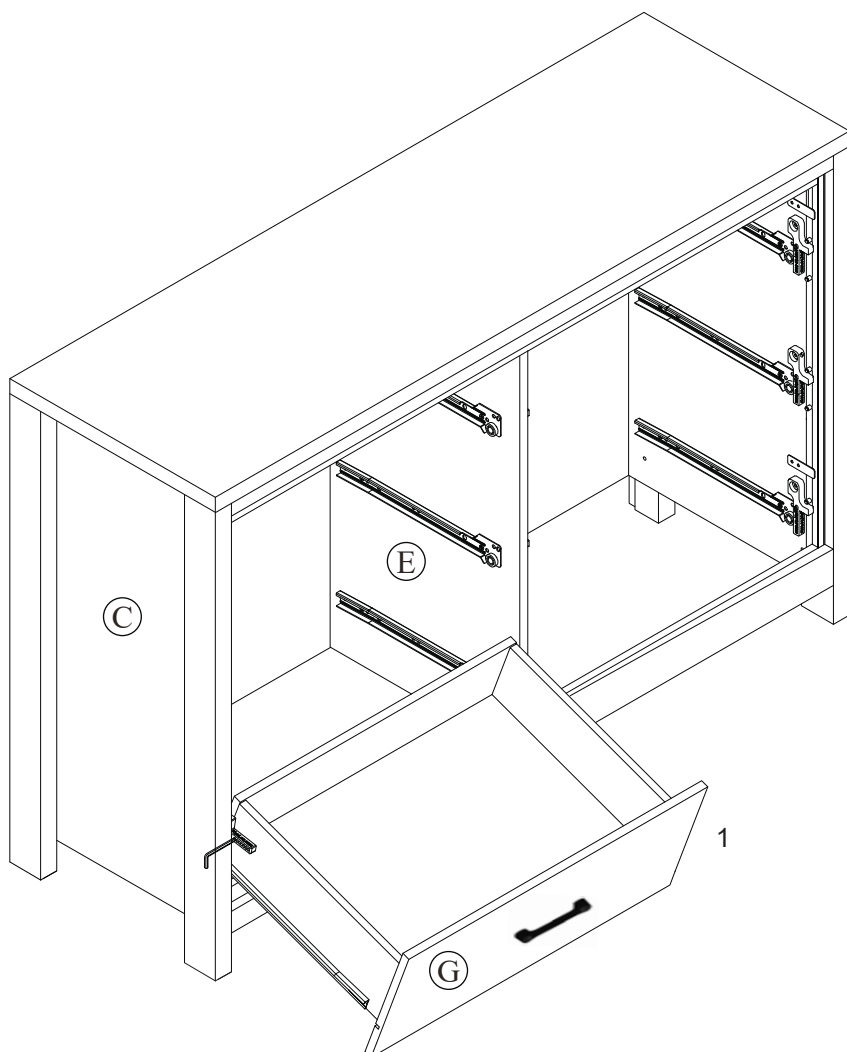
## DRAWER LOWBOY DRESSER

17

*Interlocking Drawer System* - Safety feature designed to allow only one drawer to be opened at a time.



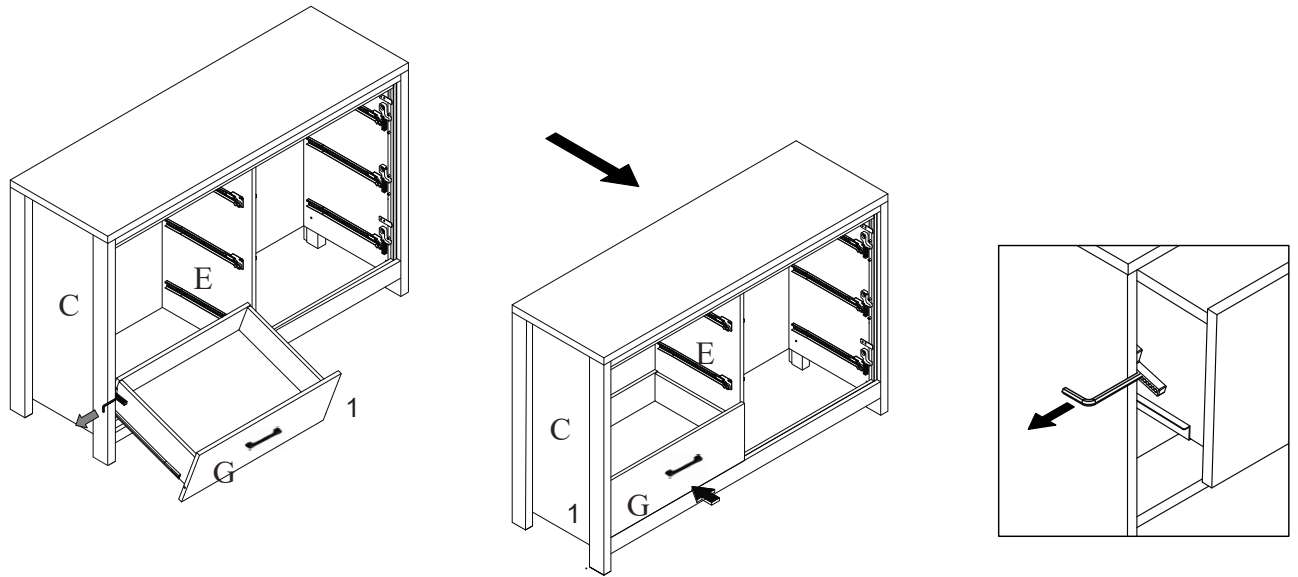
When inserting each drawer, use the Allen wrench (part 3) to lift the interlock upwards and align the drawer rails into place.



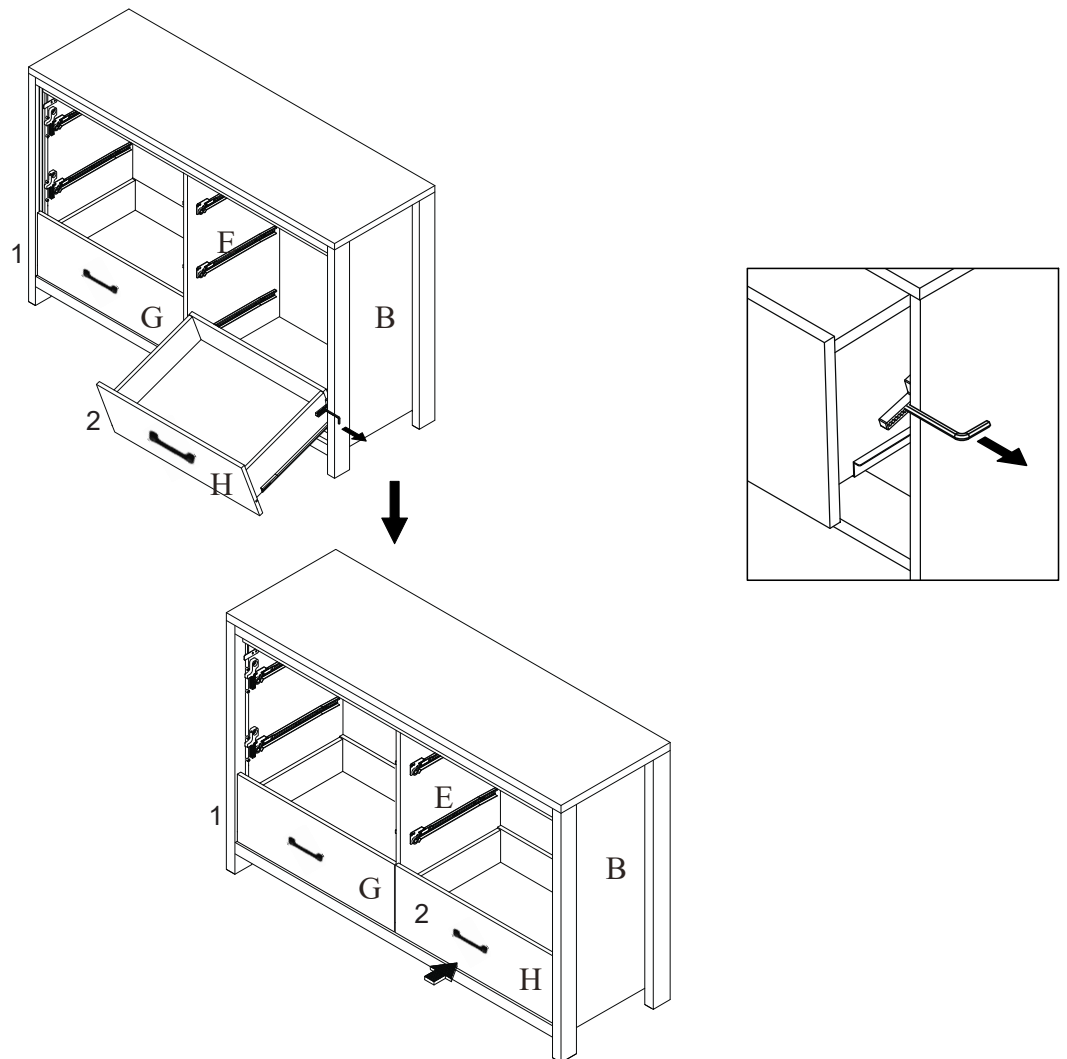
# ASSEMBLY INSTRUCTIONS

## DRAWER LOWBOY DRESSER

18



19



# ASSEMBLY INSTRUCTIONS

## DRAWER LOWBOY DRESSER

- 20 Repeat step 16 to 19 for each of the remaining drawers.

