

★  
★  
★

# ASPIRE

HESTAN



PRECISION RELAXATION.  
ASPIRE OUTDOOR KITCHENS.

## IT'S MORE THAN AN OUTDOOR KITCHEN. IT'S A FULL-THROTTLE ESCAPE VEHICLE.

Grilling is sky-blue freedom. Your time. Your people. And Aspire is your oasis – a complete outdoor kitchen finely tuned to tune out the real world. High-performance burners. Precision control. Heavy-duty construction. And cold refreshment always at the ready. We took the stress out of grilling. So you can actually enjoy the party yourself. No fiddling and fussing. Hit ignition and take an instant vacation.





# GRILLS



42" Grill on Tower Cart with Double Doors, also available in 30" and 36" widths (Grill sold separately)

## 5/16" STAINLESS STEEL ROD GRATES

BUILT TO LAST AND EASY TO CLEAN.



36" Built-in Grill with Rotisserie, also available in 30" and 42" widths

## HOT SURFACE IGNITION SYSTEM

LIGHTS WITHOUT A SINGLE "CLICK."



30" Built-in Grill, also available in 36" and 42" widths

## INFRARED SEAR BURNER

Variable ceramic infrared sear burner locks in flavor with 23,000 BTUs of searing heat. Rotisserie models also feature a ceramic infrared burner to seal in juices for perfectly tender results.



# EVERY ASPIRE GRILL

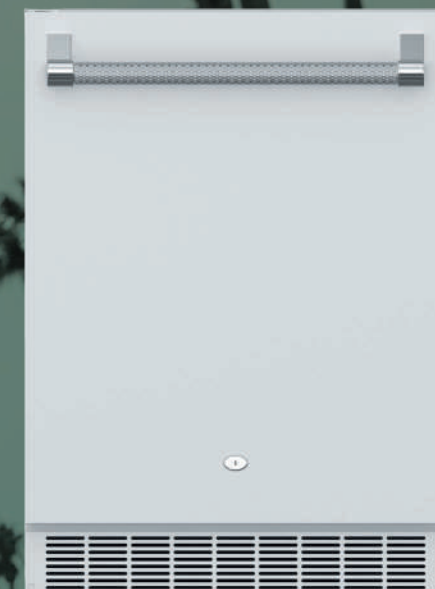
is engineered, designed and built in Anaheim, California. You'll see the Hestan team's years of experience working with professional chefs reflected in the superior materials, powerful performance and precision control.

The 304-grade stainless steel burner delivers a searing 23,000 BTUs and years of reliability. Double-sided ceramic briquettes capture drippings for sizzling flavor. Then simply flip them over to clean as you grill. Dual halogen lighting illuminates the entire grill interior. And spring-assisted hinges make it easy to lift and close the satisfyingly heavy-duty hood.





# REFRIGERATION

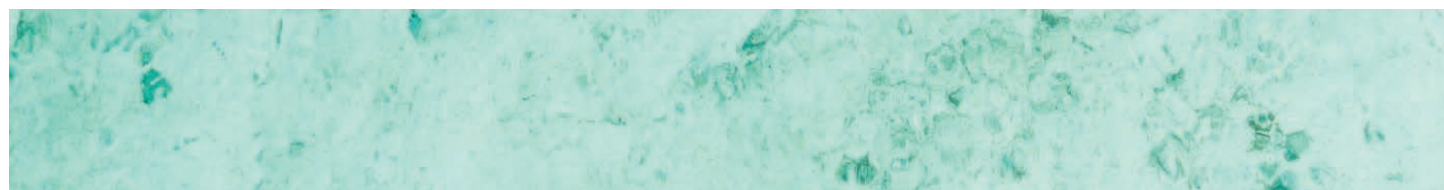




## ASPIRE OUTDOOR REFRIGERATION

is built to entertain in style. The undercounter refrigerator offers precision temperature control from 36° to 64° F, so you can store fresh ingredients or your beverage of choice at its optimum temperature. Chrome-plated adjustable shelves easily accommodate bottles, cans, growlers or large dishes.

The drop-in cooler is thoughtfully designed at bottle depth so wine bottles can be chilled upright. Exceptional insulation keeps everything ice cold through the night. And condiment trays offer handy storage for chilled snacks and garnishes. Of course, both the cooler and refrigerator are built from 304-grade stainless steel to weather every season – and every party.



24" Drop-In Cooler

## LARGE-CAPACITY STORAGE

With 5.6 cubic feet of capacity, the undercounter refrigerator accommodates more than enough burgers to fill the grill.



24" Undercounter Refrigerator

## ICE-COLD BEER TO CHARDONNAY

Reliable temperature control from 36° to 64° F allows for optimum storage of everything from fresh salmon to your favorite wine.



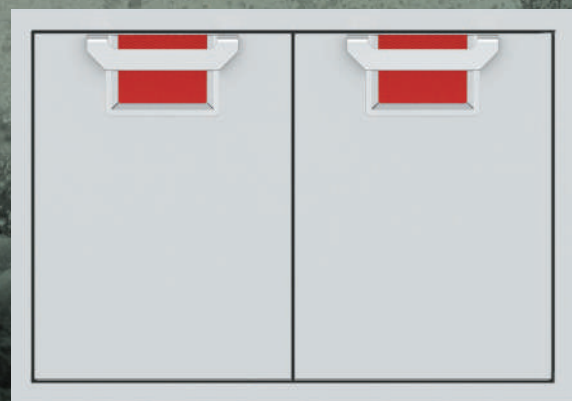
Extra-deep cooler chills wine bottles upright.

## HEAVY-DUTY LID & INSULATION

A drop-in cooler with 304-grade stainless steel lid and body, coupled with high-performance insulation, keeps everything chilled until the party's over.



24" Drop-In Cooler



# STORAGE & CLEANUP



## MARQUISE ACCENTED™ PANELS,

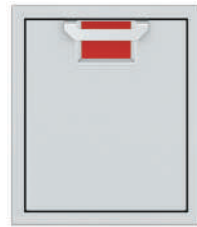
heavy-gauge body construction and commercial-grade handles perfectly complement Aspire grills.



30," 36" and 42"  
Double Access Doors



30," 36" and 42"  
Combo Door/Drawers



18" and 24"  
Single Access Doors



16" Double Drawers



Paper Towel Dispenser

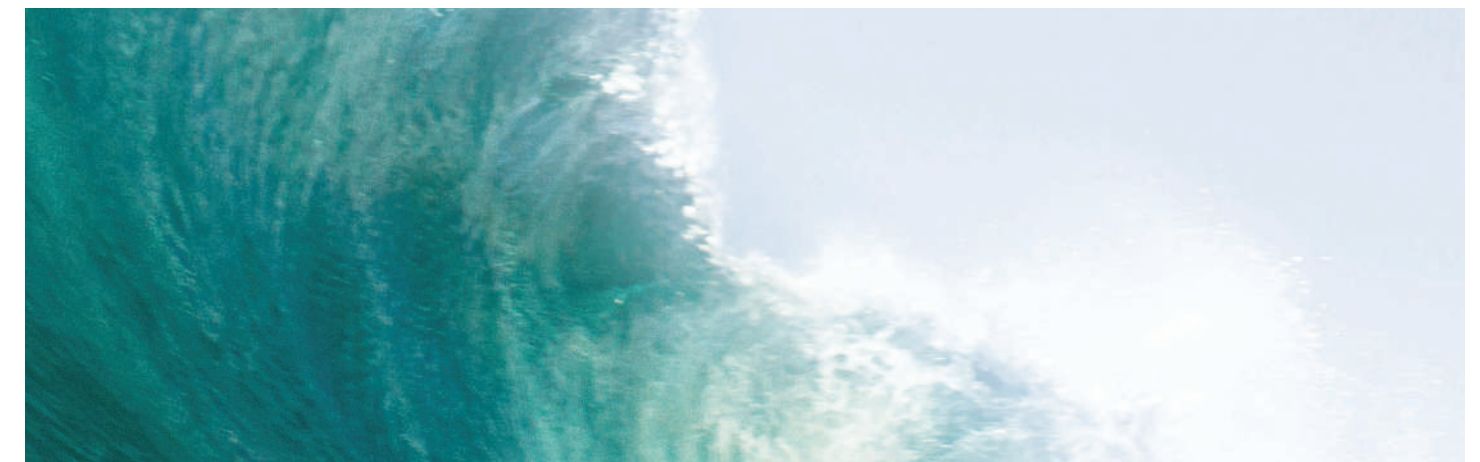


The cutting board serves double duty as a trash chute lid, sliding over for easy disposal.



## GREAT HOSTS NEVER

reveal their clutter. Storage doors and drawers provide convenient access to everything from grill tools to secret spice rubs. Keep your oasis tidy with specialized cleanup options like a commercial-grade cutting board that slides over to reveal the trash chute for easy scrap disposal. Trash drawers keep your recycling and trash bins hidden away until your guests go home.

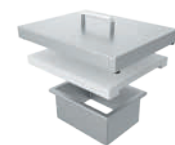


## DRAWERS, DOORS & COMBOS

Customize your outdoor kitchen with specialty storage options ranging from 16" drawers to 42" combo door/drawer units.



20" Trash  
Storage Drawer



Countertop Trash Chute

# COMPLEMENTARY PRODUCTS





Complement your entertaining style with your choice of Aspire's exclusive color finishes. From the stainless gleam of Steeetto to the soft sunset of Reef, the vibe is all yours.



## ADD EVEN MORE

culinary performance to your Aspire outdoor kitchen with side burners. The 20,000 BTU burner delivers enough power for a crab boil and enough control for béarnaise sauce. The custom-built stainless steel smoker set imparts the perfect touch of smoke from your favorite wood chips. Insulated jackets offer extra safety for grill enclosures, and a custom-fitted grill cover provides extra protection from the elements.

## SIDE BURNERS

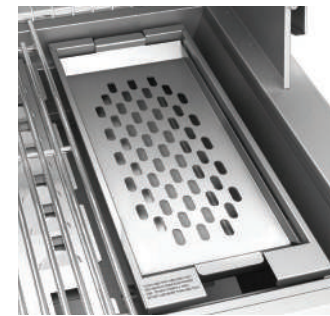
The high-performance sealed side burner system delivers a 20,000 BTU flame. The double burner model also includes a 10,000 BTU burner.



12" Single or Double Side Burners



Optional DiamondCut™ Grates offer an exceptional grilling surface with ultra heavy-duty 5/16" stainless steel laser cut in-house.



This ingenious charcoal tray gives you the best of both grilling worlds – easily lighting lump coal, briquettes or wood chips.

## INSULATED JACKETS

30," 36" or 42" insulated jackets offer easy installation while providing extra safety for combustible enclosures.



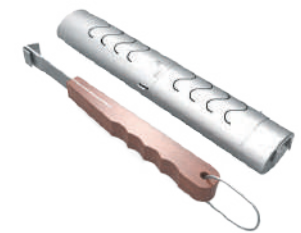
The optional griddle plate pops onto grates, providing the perfect cooking surface for bacon, pancakes and more.



Robust vinyl covers with protective lining fend off the elements.



Caster covers upgrade your grill to give it a more streamlined look.



## HEAVY-DUTY SMOKER SET

304 heavy-gauge stainless steel smoker set optimizes draft and flow-through for maximum smoke.



**HESTANASPIRE.COM**

888.905.7463

3375 E. La Palma Avenue

Anaheim, CA 92806

