

# MINNEAPOLIS TOUCHSCREEN Z- WAVE DEADBOLT

ELECTRONIC DEADBOLT WITH BUILT-IN Z WAVE SMART TECHNOLOGY



## SPEI

### STYLE

BACKSET SIZE Adjustable

FEATURES MASTERCODE Yes

INTERIOR LOCKING TYPE Turn Piece

BATTERY TYPE REQUIRED 4 AA, included

# OF CODES 30.0

# OF BUTTONS 12.0

# MINNEAPOLIS TOUCHSCREEN Z- WAVE DEADBOLT

ELECTRONIC DEADBOLT WITH BUILT-IN Z WAVE SMART TECHNOLOGY

Model Number:  
8225.060.ZW

## SEE BELOW FOR ADDITIONAL FUNCTIONS

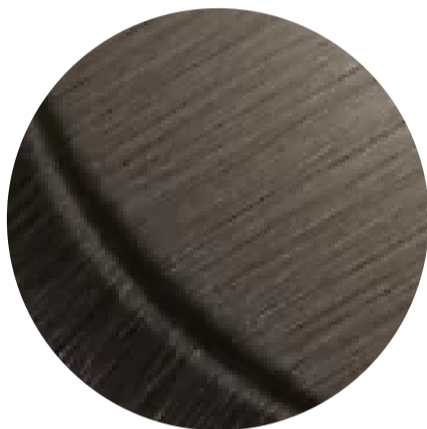
### Key Features

- A patina with the tones of fine old wood gives distinctive color to this oxidized, relieved and lacquered finish suited to accenting design elements that call for a three-dimensional appearance. Hand-relieved finish may vary in luster, hue, and appearance showing it's handcrafted fully.

## FINISHES OPTIONS



Lifetime (PVD) Satin Nickel - 056



Lifetime (PVD) Graphite Nickel - 076



Lifetime (PVD) Polished Nickel - 055



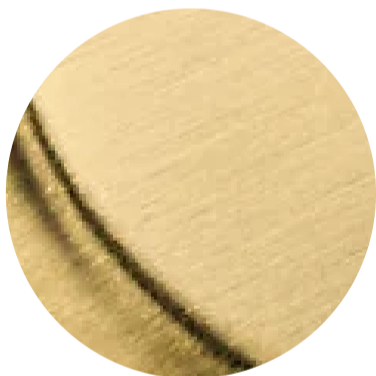
Polished Chrome - 260



Distressed Oil Rubbed Bronze - 402



Lifetime (PVD) Polished Brass - 003



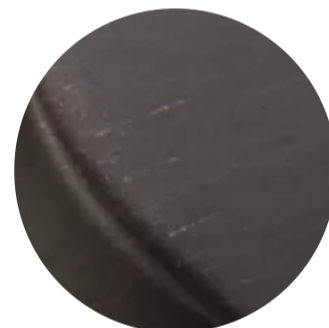
Lifetime (PVD) Satin Brass - 044



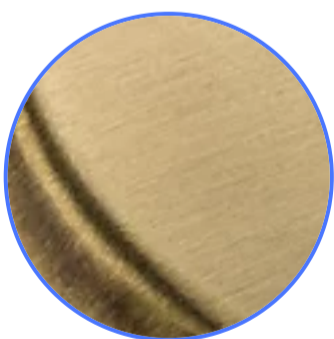
Satin Black - 190



Oil Rubbed Bronze - 102



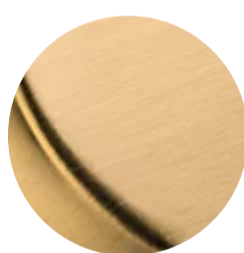
Venetian Bronze - 112, 11P



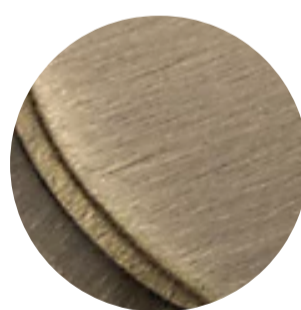
Satin Brass & Brown - 060



Non-lacquered Brass - 031



Vintage Brass - 033



Satin Brass & Black - 050

## SPECIFICATIONS

STYLE	Contemporary
<i>all measurements in inches</i>	
BACKSET SIZE	Adjustable
FEATURES MASTERCODE	Yes
INTERIOR LOCKING TYPE	Turn Piece
BATTERY TYPE REQUIRED	4 AA, included
# OF CODES	30.0
# OF BUTTONS	12.0